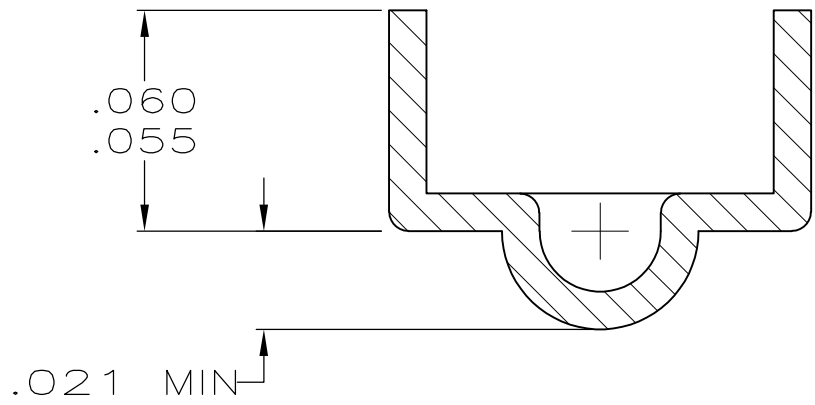
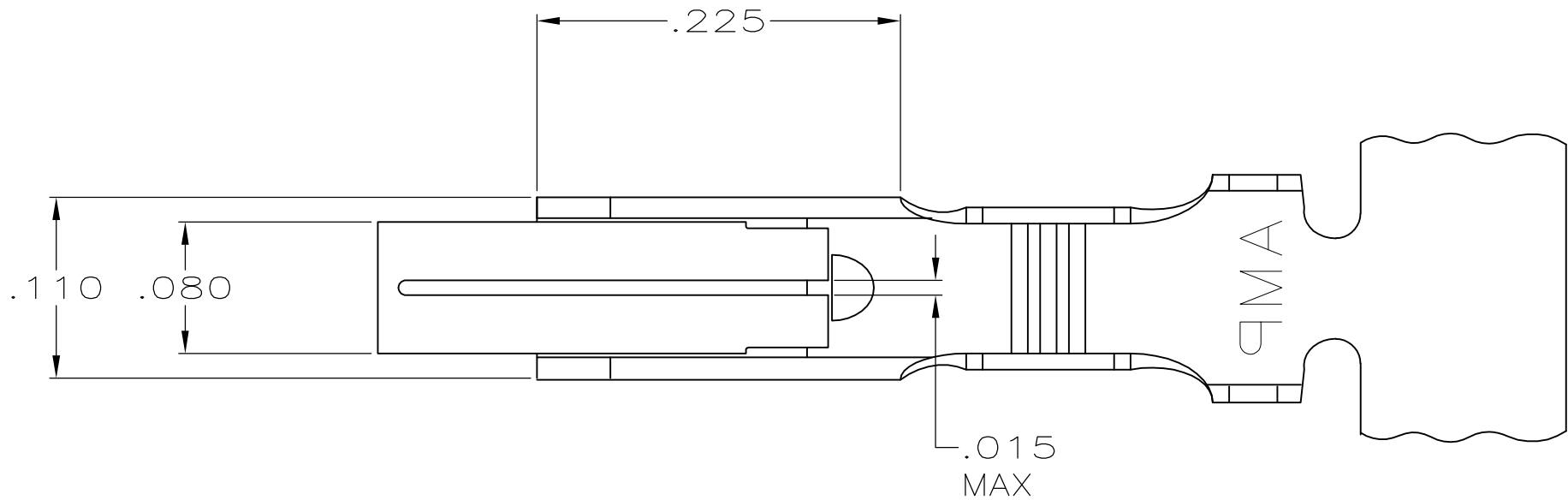
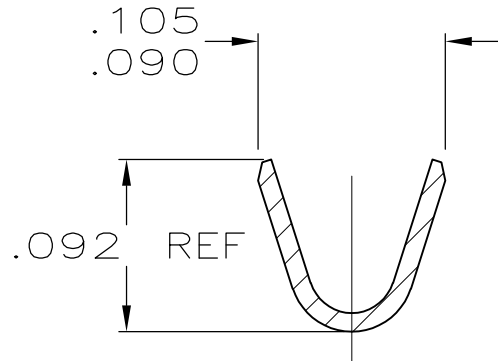


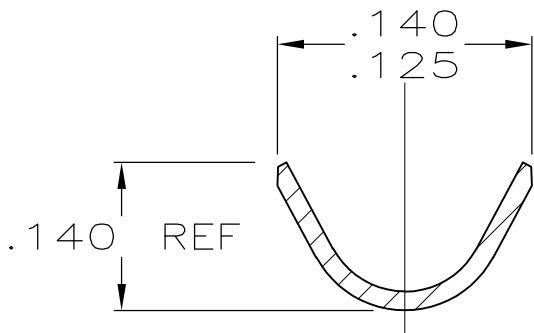
LOC		DIST		REVISIONS					
CM	00	P	LTR	DESCRIPTION			DATE	DWN	APVD
			AS1	REVISED PER ECO-11-005027			11MAR11	RK	HMR



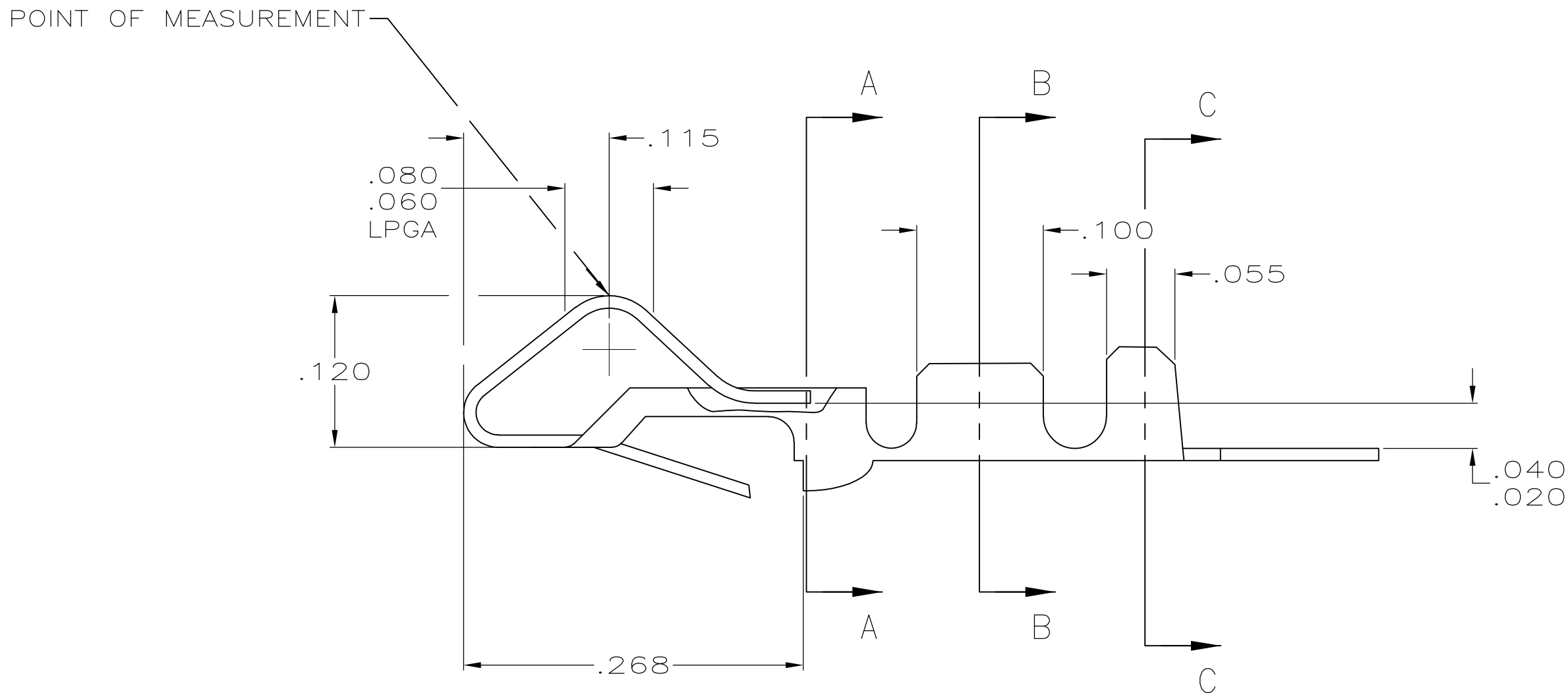
SECTION A-A
SCALE 20:1



SECTION B-B




SECTION C-C



1. .000080 - .000200 TIN OVER .000050 MIN NICKEL
2. INSULATION RANGE:.100 DIA MAX.
WIRE RANGE :24-18 AWG (0.02 - 0.9 MM²).
3. .000080 - .000200 TIN-LEAD OVER .000050 MIN NICKEL
4. .000050 NICKEL OVERALL WITH .000030 MIN GOLD
IN THE LOCALIZED GOLD PLATE AREA (LGPA).

—	1	.012 BRASS	3-61668-1
—	4	.012 PH BRZ	61668-4
—	PRE-TIN	.012 PH BRZ	61668-2
—	3	.012 BRASS	61668-1
NOTES	FINISH	MATERIAL	PART NO.

THIS DRAWING IS A CONTROLLED DOCUMENT.		DWN S. CARPENTER 21AUG2003	TE Connectivity	
DIMENSIONS: INCHES		CHK J. ELLIS 21AUG2003	NAME CONTACT,BIFURCATED LEAF	
TOLERANCES UNLESS OTHERWISE SPECIFIED:		APVD J. ELLIS 21AUG2003	PRODUCT SPEC	
		APPLICATION SPEC		RESTRICTED TO —
MATERIAL		SIZE CAGE CODE DRAWING NO		
SEE TABLE		A1 00779C=61668		REV AS1
SEE TABLE		CUSTOMER DRAWING		
		SCALE 10:1 SHEET 1 OF 1		

Mouser Electronics

Authorized Distributor

Click to View Pricing, Inventory, Delivery & Lifecycle Information:

[TE Connectivity:](#)

[3-61668-1](#)