

D

C

B

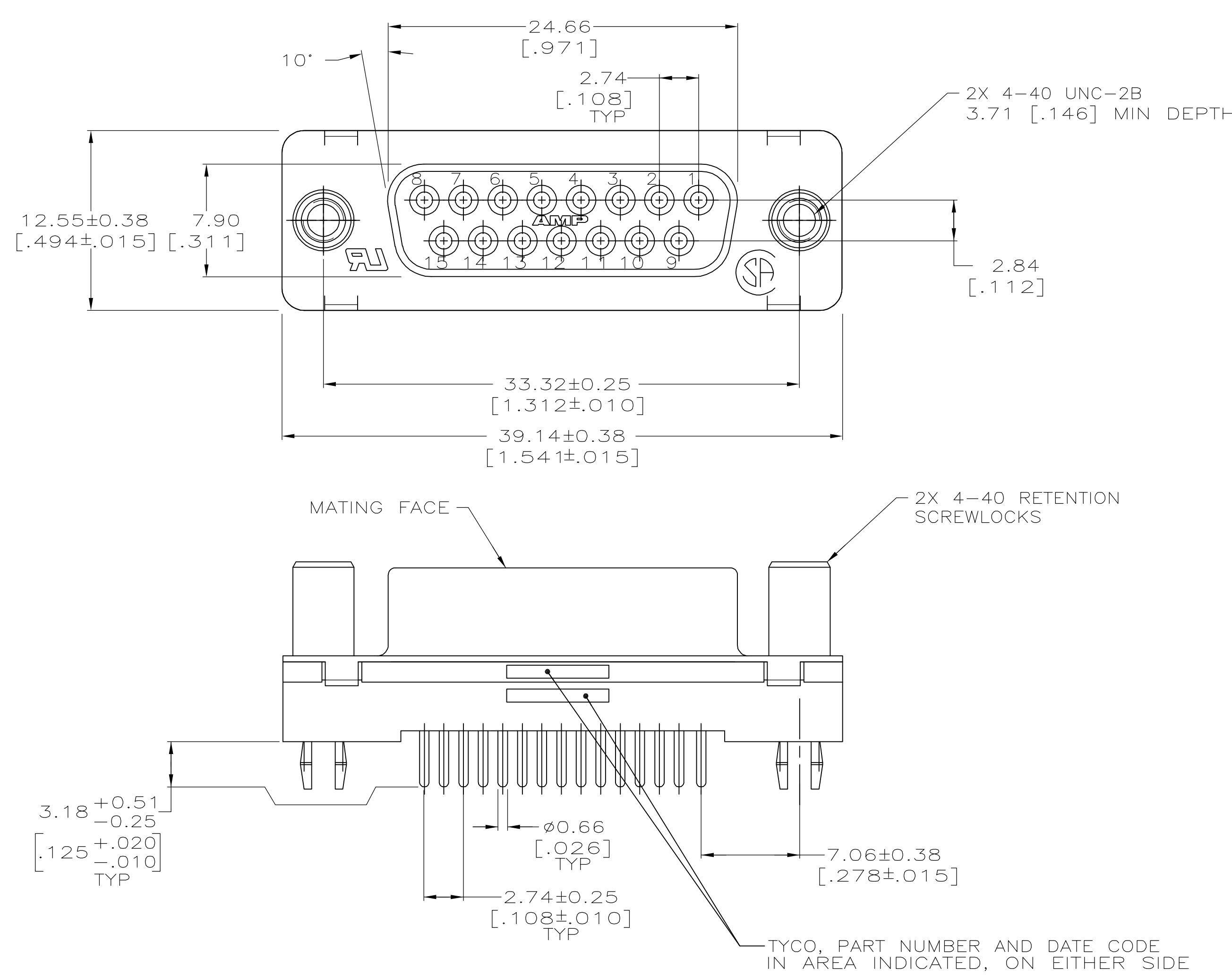
A

D

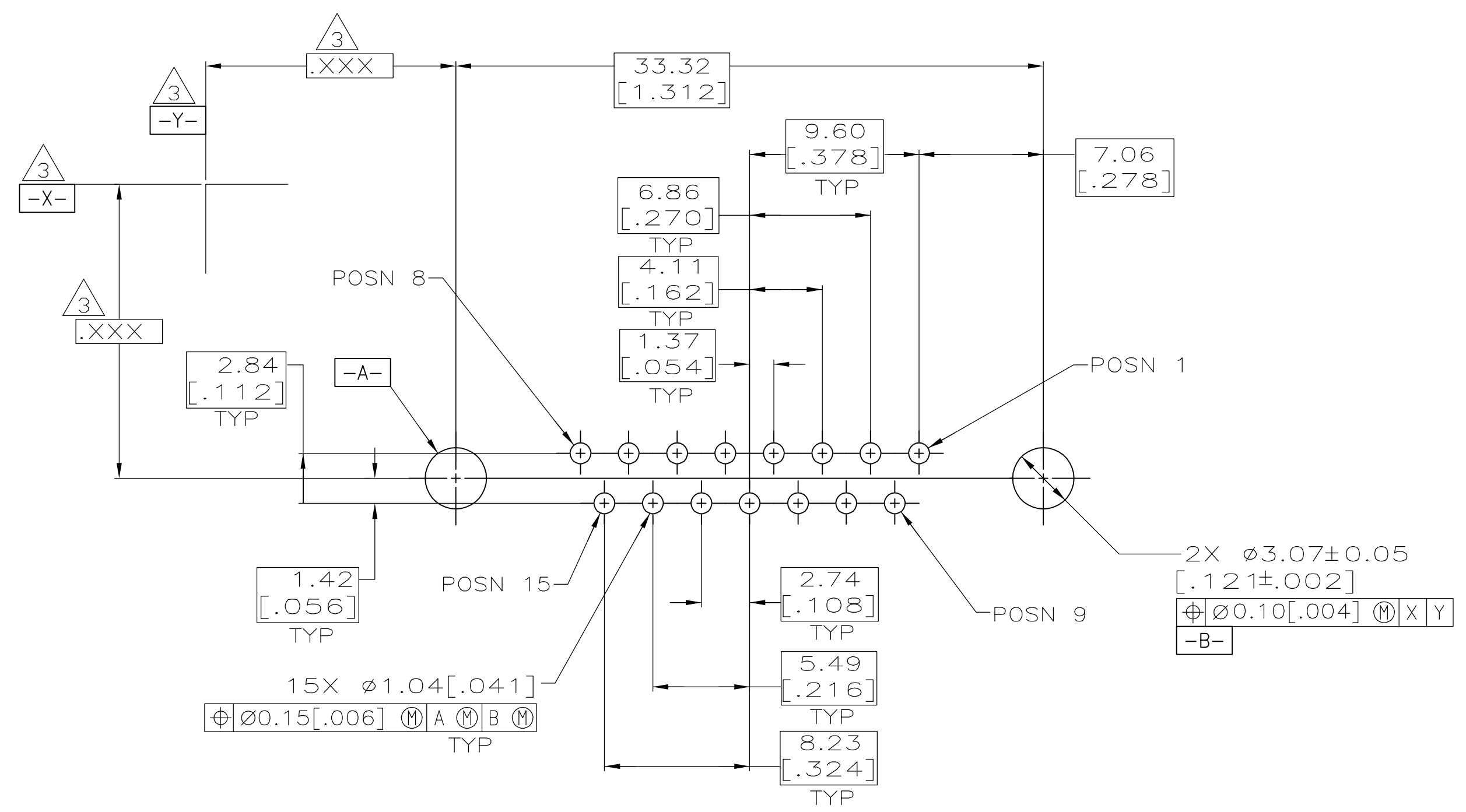
C

B

A



- 1 HOUSING: POLYESTER, UL 94V-0 RATED, BLACK.
CONTACTS: PHOSPHOR BRONZE
RETENTION SCREWLOCKS: BRASS
SHELL: CARBON STEEL
- 2 SHELL: 5.08µm[.000200] MIN TIN OVER 2.54µm[.000100] MIN COPPER.
CONTACTS: 0.76µm[.000030] MIN GOLD FOR A LENGTH OF 1.40[.055] MIN FROM MATING END, 2.54µm[.000100] MIN TIN ON OPPOSITE END, BOTH OVER 1.27µm[.000030] MIN NICKEL OVER COPPER FLASH.
RETENTION SCREWLOCKS: 2.54µm[.000100] MIN TIN OVER 1.27µm[.000050] MIN NICKEL OVER COPPER FLASH.
- 3 DATUMS AND BASIC DIMENSIONS ESTABLISHED BY CUSTOMER.
- 4 2.79[.110] MAX IN SHELL TAB CLINCH AREAS.



RECOMMENDED PC BOARD MOUNTING DIMENSIONS
1.57[.062] PC BOARD THICKNESS

THIS DRAWING IS A CONTROLLED DOCUMENT.		DWN B. LATTUCA	03OCT05	tyco Electronics		Tyco Electronics Corporation Harrisburg, PA 17105-3608					
DIMENSIONS: mm[INCHES]		CHK S. BOLASH	03OCT05								
		APVD M. WALMSLEY	03OCT05	NAME							
		PRODUCT SPEC 108-40025		RECEPTACLE ASSEMBLY, SIZE 2, 15 POSITION, FRONT METAL SHELL, RETENTION SCREWLOCKS, AMPLIMITE HD-20							
		APPLICATION SPEC 114-40023									
MATERIAL 		FINISH 		WEIGHT —	SIZE		CAGE CODE	DRAWING NO	RESTRICTED TO		
CUSTOMER DRAWING				A1	00779	C	5787683	—			
				SCALE	4:1	SHEET	1	OF	1	REV	A

Mouser Electronics

Authorized Distributor

Click to View Pricing, Inventory, Delivery & Lifecycle Information:

[TE Connectivity:](#)

[5787683-1](#)