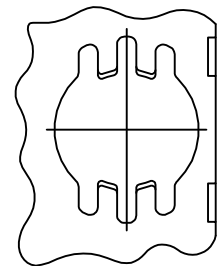
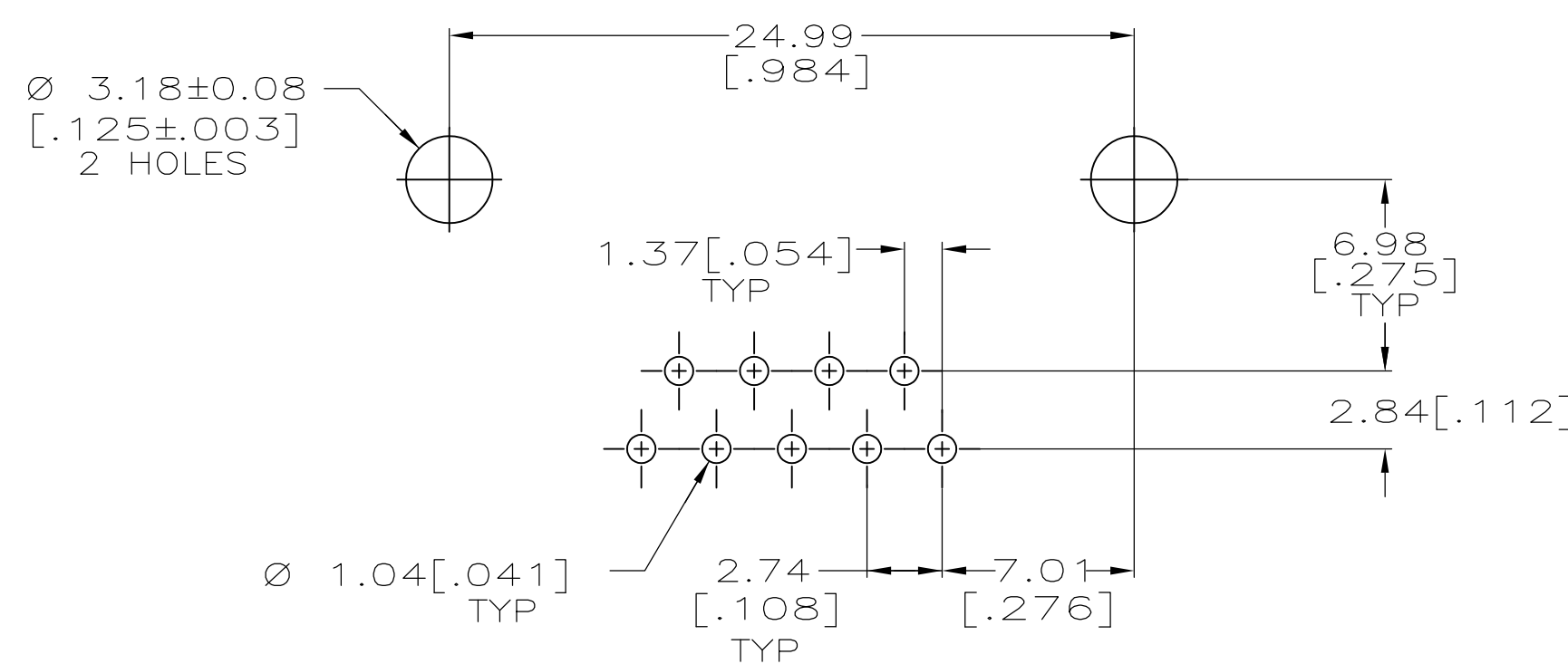
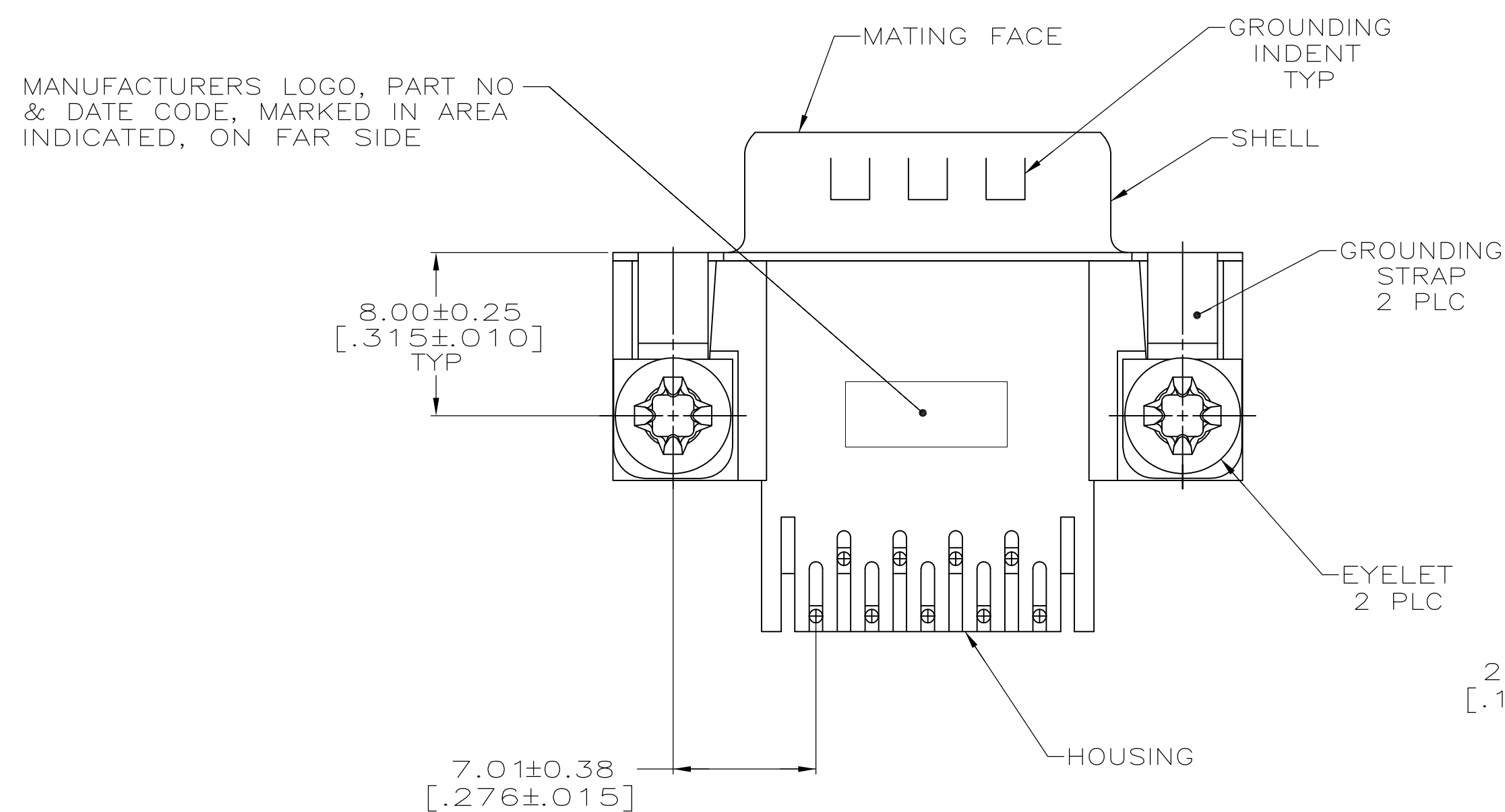
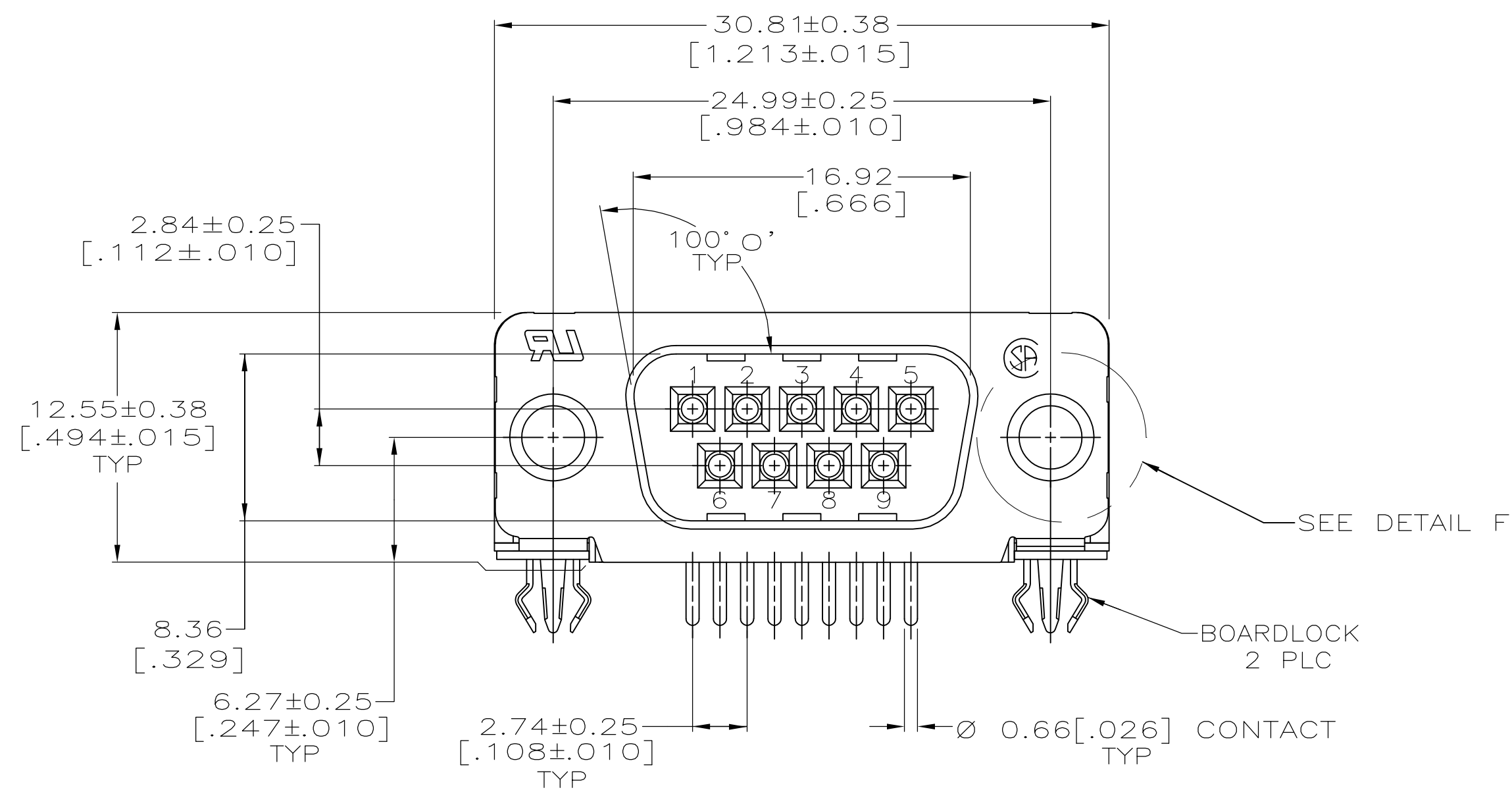


LOC	DIST	REVISIONS					
GP	00	P	LTR	DESCRIPTION	DATE	DWN	APVD
			C	REVISED PER ECO-12-022391	02JAN2013	CJV	SLB



FOR -6 ONLY

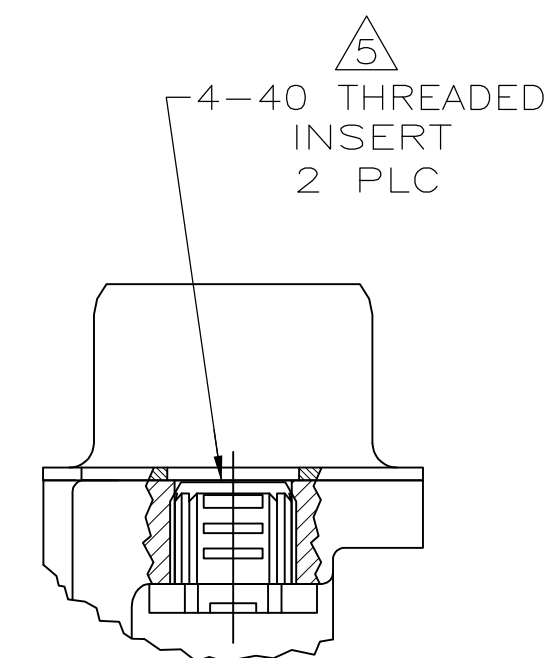
DETAIL F
2 PLC



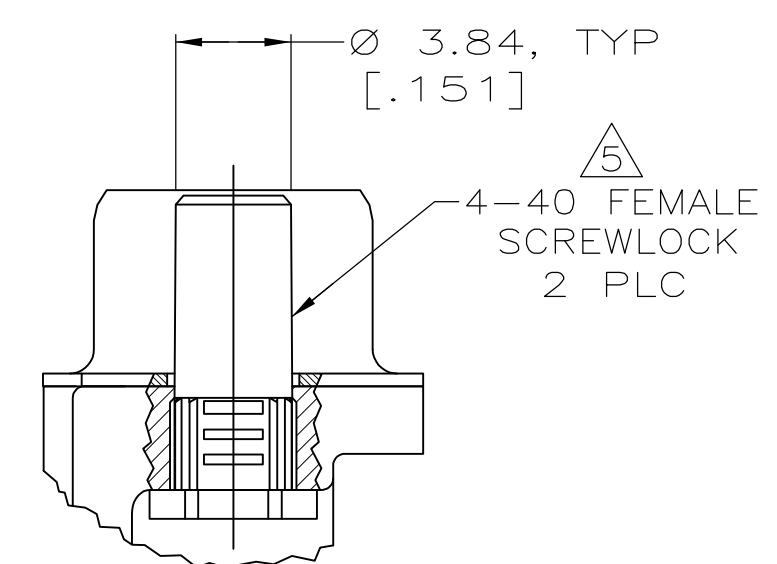
P.C. BOARD MOUNTING DIMENSIONS
P.C. BOARD THICKNESS: 1.57[.062]

**COPYRIGHT 2005
TYCO ELECTRONICS CORP
ALL RIGHTS RESERVED**

- ① HOUSING: NYLON OR POLYESTER, FLAME RETARDANT, UL 94V-0
RATED, GLASS FILLED, BLACK.
CONTACTS: BRASS.
SHELL: CARBON STEEL.
EYELETS: BRASS.
BOARDLOCKS: COPPER ALLOY.
SCREWLOCKS: ZINC.
INSERTS: ZINC.
- ② CONTACTS: SEE TABLE
SHELL: $2.54\mu\text{m}$ [.000100] MIN TIN OVER $1.27\mu\text{m}$ [.000050] MIN
COPPER.
EYELETS: $5.08\mu\text{m}$ [.000200] MIN TIN OVER COPPER FLASH.
BOARDLOCKS: $5.08\mu\text{m}$ [.000200] MIN TIN OVER
 $1.27\mu\text{m}$ [.000050] MIN NICKEL.
SCREWLOCKS: CLEAR CHROMATE.
INSERTS: CLEAR CHROMATE.
- ③ GOLD FLASH ON THE MATING SURFACES, $2.54\mu\text{m}$ [.000100] MIN TIN PLATE
ON THE SOLDER END, $1.27\mu\text{m}$ [.000050] MIN NICKEL UNDERPLATE ON THE
ENTIRE CONTACT.
- ④ $0.76\mu\text{m}$ [.000030] MIN GOLD PLATE ON THE MATING SURFACES, $2.54\mu\text{m}$
[.000100] MIN TIN PLATE ON THE SOLDER END, $1.27\mu\text{m}$ [.000050] MIN
NICKEL UNDERPLATE ON THE ENTIRE CONTACT
-OR-
GOLD FLASH OVER PALLADIUM-NICKEL PLATE, $0.76\mu\text{m}$ [.000030] MIN
TOTAL ON THE MATING SURFACES, $2.54\mu\text{m}$ [.000100] MIN TIN PLATE ON
THE SOLDER END, $1.27\mu\text{m}$ [.000050] MIN NICKEL UNDERPLATE ON THE
ENTIRE CONTACT.
- ⑤ SCREWLOCKS & INSERTS WILL WITHSTAND 4 IN LBS TORQUE & 20 LBS
PULL OUT FORCE FROM MATING FACE SIDE.
- ⑥ OBSOLETE PARTS: OBSOLETE CIS STREAMLINING PER D.RENAUD/D.SINISI


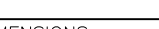




DETAIL D



DETAIL E

6	OBSOLETE	SEE DETAIL E	<u>4</u>	5747832-6
		SEE DETAIL D	<u>4</u>	5747832-4
		SEE DETAIL D	<u>3</u>	5747832-3
		MOUNTING HARDWARE	CONTACT FINISH	PART NUMBER

THIS DRAWING IS A CONTROLLED DOCUMENT. DIMENSIONING AND TOLERANCING PER ASME Y14.5M-2009		DWN G. ATTADIA - DOCKS QTR S. BOLASH APVD M. WALMSLEY DATE 04-08-05 DATE 04-08-05		 TE Connectivity	
DIMENSIONS: mm [INCHES]		TOLERANCES UNLESS OTHERWISE SPECIFIED:		NAME	
		0 PLC ± — 1 PLC ± — 2 PLC ± 0.13[.005] 3 PLC ± — 4 PLC ± — ANGLES ± 2° 0'		PLUG ASSEMBLY, SIZE 1, 9 POSITION, RIGHT ANGLE, FRONT METAL SHELL, 590 SERIES, BOARDLOCKS, AMPLIMITE HD-20	
MATERIAL		FINISH		SIZE CAGE CODE DRAWING NO. RESTRICTED TO	
				A1 00779 C-5747832	
WEIGHT —		CUSTOMER DRAWING		SCALE 4:1 SHEET 1 OF 1 REV. C	

Mouser Electronics

Authorized Distributor

Click to View Pricing, Inventory, Delivery & Lifecycle Information:

[TE Connectivity:](#)

[5747832-4](#)