

4

3

2

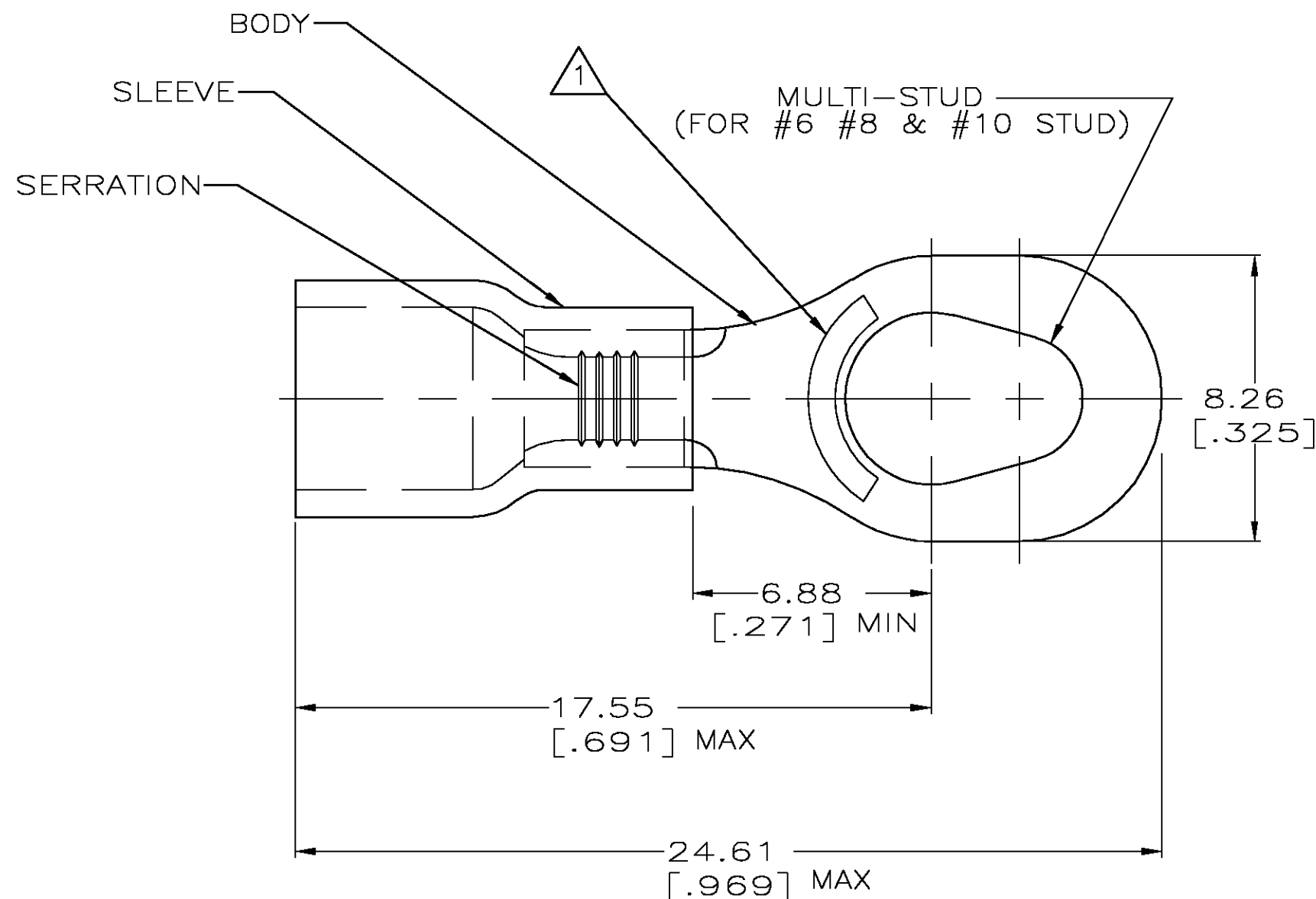
1

THIS DRAWING IS UNPUBLISHED.

RELEASED FOR PUBLICATION

© COPYRIGHT - BY TYCO ELECTRONICS CORPORATION. ALL RIGHTS RESERVED.

LOC	DIST	REVISIONS				
G	14	P	LTR	DESCRIPTION	DATE	APVD
			B	REV PER 0G3A-0654-04	19AUG04	JR TM



<b>AMP</b> WIRE RANGE	Listed	LR7189 Certified
16-14 AWG SOLID OR STRANDED	16-14 AWG SOLID OR STRANDED	16-14 AWG SOLID OR STRANDED

- 1 STAMP AMP 16-14\* APPROX AS SHOWN
2. WIRE INSUL DIA, 2.67-3.68 [.105-.145]
3. TONGUE MATL THK, 0.79±0.05 [.031±.002]
- 4 MATERIAL: BODY - CU PER ASTM B152  
SLEEVE - PVC, COLOR - BLUE

-	-	-
5000	ON TAPE, REEL	54775-2
1000	LOOSE PIECE	54775-1
QTY	PACKAGE TYPE	PART NO

## AMP INCORPORATED CUSTOMER SERVICE SYSTEMS

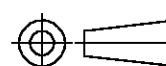
FOR ADDITIONAL  
PRODUCT INFORMATION OR  
COPIES OF DRAWINGS  
AND TECHNICAL DOCUMENTSPRODUCT INFORMATION CENTER  
1-800-522-6752FOR APPLICATION  
TOOLING INFORMATIONTOOLING ASSISTANCE CENTER  
1-800-722-1111

FOR ORDER ENTRY

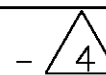
1-800-526-5142

THIS DRAWING IS A CONTROLLED DOCUMENT FOR  
AMP INCORPORATED. IT IS SUBJECT TO CHANGE  
AND THE CONTROLLING ENGINEERING ORGANIZATION  
SHOULD BE CONTACTED FOR THE LATEST REVISION.MAX RECOMMENDED OPERATING  
TEMPERATURE:  
105°C [221° F]VOLTAGE RATING:  
600V MAX  
(1000V FIXTURE OR SIGN)CIRCULAR MIL AREA:  
1.04-2.62mm² [2,050-5,180]  
SOLID OR STRANDED

THIS DRAWING IS A CONTROLLED DOCUMENT.

DIMENSIONS:  
mm [INCHES]

MATERIAL

TOLERANCES UNLESS  
OTHERWISE SPECIFIED:0 PLC ± -  
1 PLC ± -  
2 PLC ± 0.20 [.008]  
3 PLC ± -  
4 PLC ± -  
ANGLES ± -

FINISH

TIN PER ASTM B545

DWN L OLMEDA 05SEP95

CHK M ELLIS 05SEP95

APVD G NGO 05SEP95

PRODUCT SPEC

UL 486A

APPLICATION SPEC

WEIGHT

CUSTOMER DRAWING

**tyco**  
**Electronics**Tyco Electronics Corporation  
Harrisburg, Pa 17105-3608

NAME

TERMINAL, RING, MULTI-STUD,  
PLASTI-GRIP  
16-14

SIZE

CAGE CODE

DRAWING NO

RESTRICTED TO

A3 00779 C-54775

SCALE 6:1

SHEET 1 OF 1

REV B

# Mouser Electronics

Authorized Distributor

Click to View Pricing, Inventory, Delivery & Lifecycle Information:

[TE Connectivity:](#)

[54775-2](#)