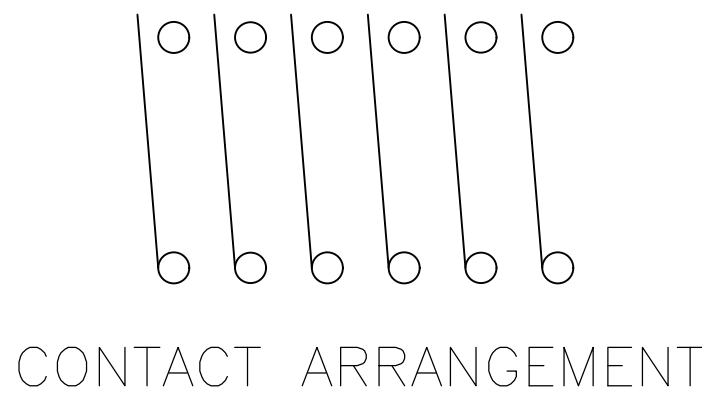
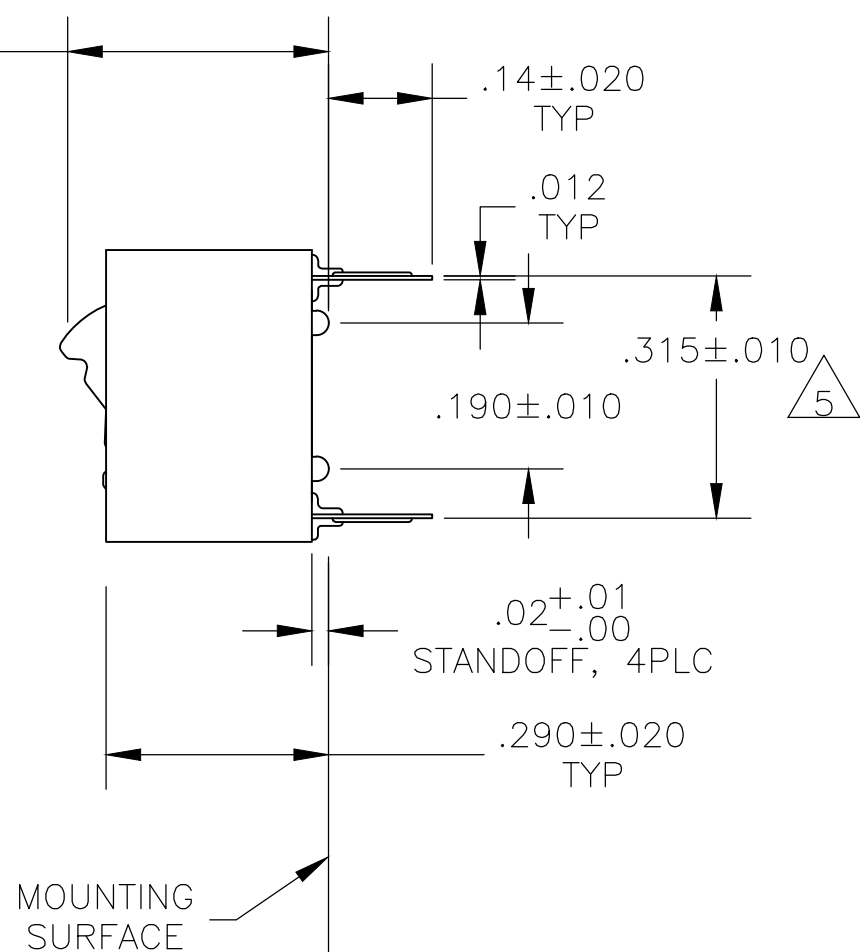
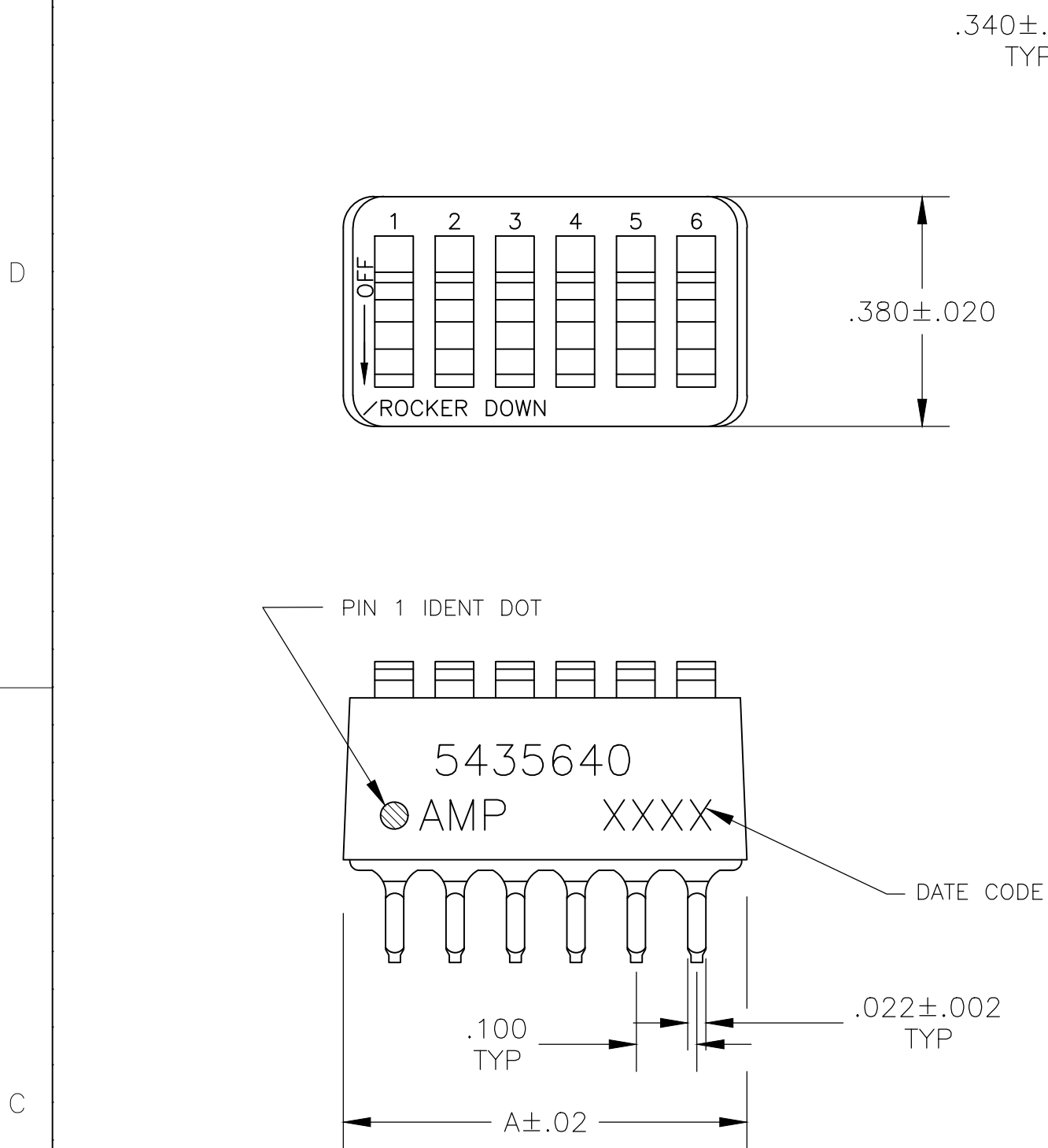


D

C

B

A



- FOR ADDITIONAL SPECIFICATIONS SEE AMP PRODUCT SPEC 108-7532.
- SWITCH SHOWN IN OPEN POSITION.
- ALL CHARACTERS AND ROCKERS ARE WHITE, HOUSING IS BLUE.
- LASER MARKING WILL VARY ON 2 AND 3 POSITION SIDES DUE TO SPACE RESTRICTIONS.
- .315 DIMENSION APPLIES AT TERMINAL TIPS. TERMINALS ARE .300+.010 -.000 AT MOUNTING SURFACE.
- STRIPPABLE TRANSPARENT SEAL, SEE FIG 1.
- STRIPPABLE TRANSPARENT SEAL, SEE FIG 1.
- MATERIAL: HOUSING & ROCKERS- POLYESTER CONTACTS & SOLDER LEAD-COPPER ALLOY
- FINISH: CONTACTS- GOLD OVER NICKEL SOLDER LEAD- TIN OVER NICKEL
- ALL MATERIALS AND FINISHES SHALL COMPLY WITH EU DIRECTIVE 2002 /95/EC OF 27JAN2003(ROHS).
- OBSOLETE PARTS: OBSOLETE CIS STREAMLINING PER D.RENAUD/D.SINISI
- MARKS WILL BE ADDED BY LASER MARK PROCESS.

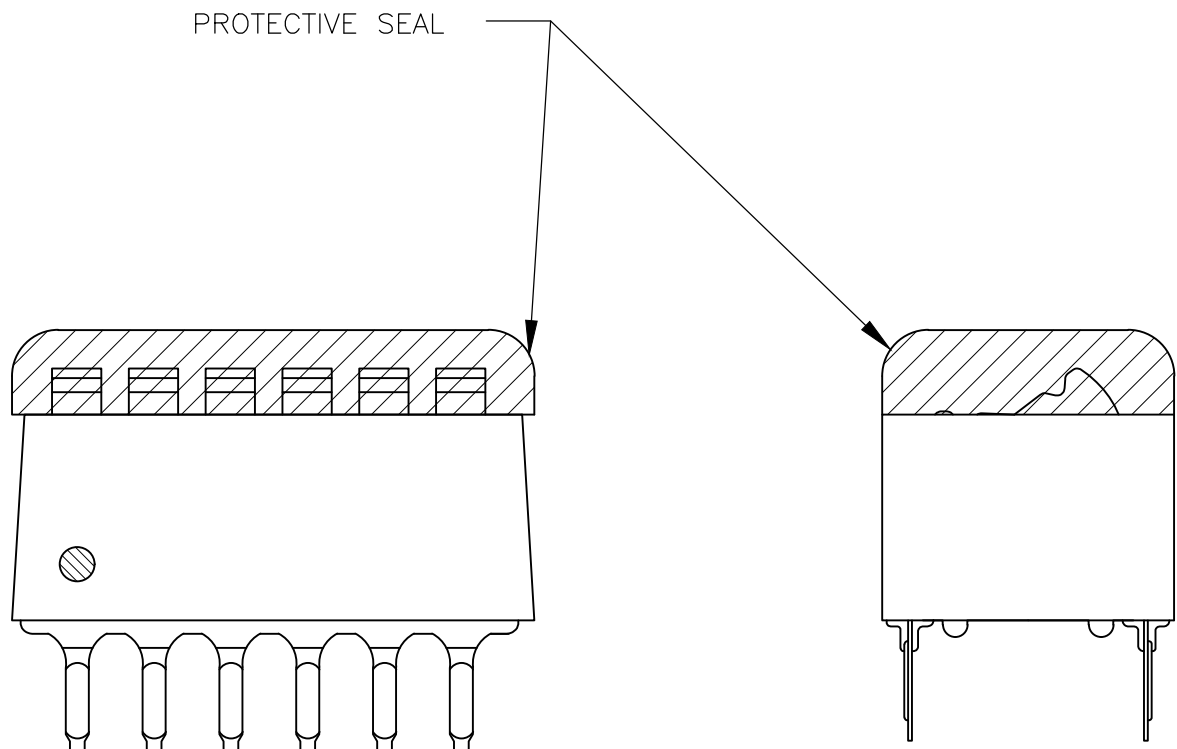


FIG 1

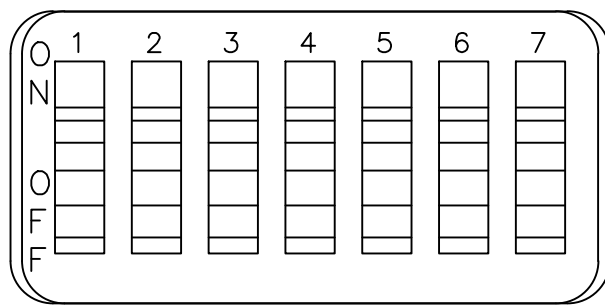


FIG 2

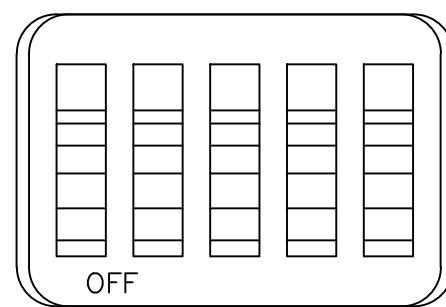


FIG 3

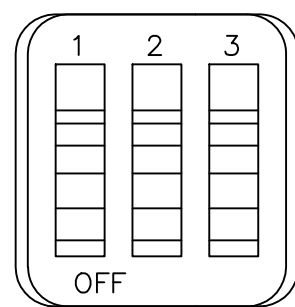


FIG 4

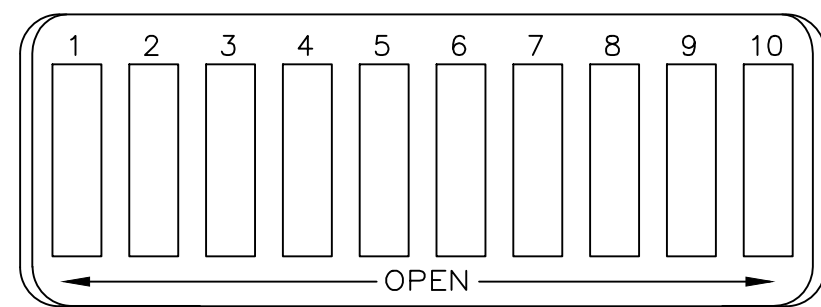


FIG 5

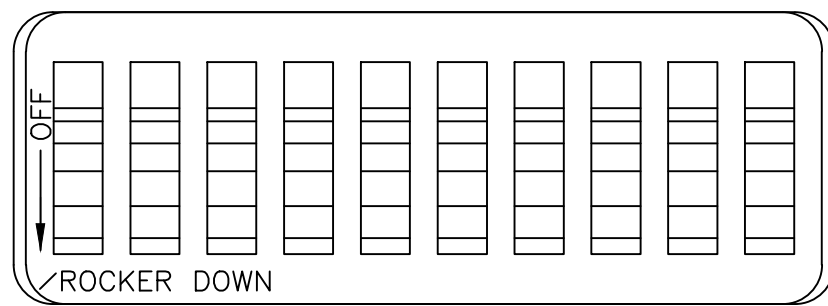


FIG 6

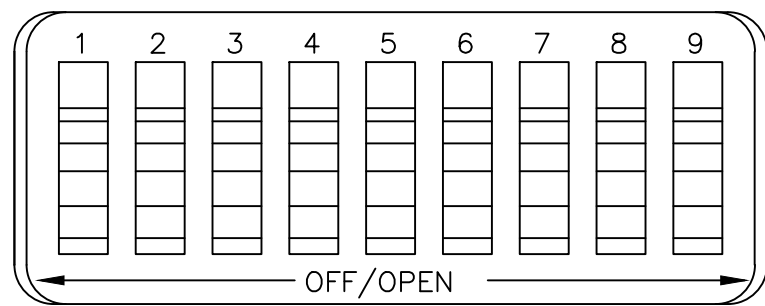


FIG 7

<div><div>11</div><div>OBSOLETE</div></div>	FIG 6	1.08	10	6-5435640-1	
		.58	5	6-5435640-0	
		.48	4	5-5435640-9	
		.88	8	5-5435640-8	
<div><div>11</div><div>OBSOLETE</div></div>	FIG 7	.98	9	5-5435640-7	
		.68	6	5-5435640-6	
		.58	5	5-5435640-5	
		.48	4	5-5435640-4	
<div><div>11</div><div>OBSOLETE</div></div>	FIG 5	.88	8	5-5435640-3	
		1.08	10	5-5435640-1	
		.88	8	5-5435640-0	
		.88	8	4-5435640-9	
<div><div>11</div><div>OBSOLETE</div></div>	FIG 3	.58	5	4-5435640-8	
		1.08	10	4-5435640-7	
		1.28	12	4-5435640-3	
		1.08	10	4-5435640-1	
<div><div>11</div><div>OBSOLETE</div></div>	AS SHOWN	.98	9	4-5435640-0	
		.88	8	3-5435640-9	
		.78	7	3-5435640-8	
		.68	6	3-5435640-7	
		.58	5	3-5435640-6	
		.48	4	3-5435640-5	
		1.28	12	3-5435640-2	
		FIG 4	.38	3	3-5435640-0
			.28	2	2-5435640-9
		AS SHOWN	1.08	10	5435640-7
			.98	9	5435640-6
			.88	8	5435640-5
.68	6		5435640-4		
.58	5		5435640-3		
.48	4		5435640-2		
AS SHOWN	.78	7	5435640-1		
	TOP MARKING		A	NO OF POSN	PART NO.

THIS DRAWING IS A CONTROLLED DOCUMENT.		DWN BSV 08JAN2005	TE Connectivity	
DIMENSIONS: INCHES		CHK M. SARVER 13SEP05		
TOLERANCES UNLESS OTHERWISE SPECIFIED:		APVD M. SARVER 13SEP05	NAME	
0 PLC ± -		APPLICATION SPEC		SIZE
1 PLC ± -		WEIGHT		CAGE CODE
2 PLC ± -		CUSTOMER DRAWING		DRAWING NO
3 PLC ± .005		SCALE 4:1		RESTRICTED TO
4 PLC ± -		SHEET 1 OF 1		REV
ANGLES ± -		REV		
MATERIAL SEE NOTES		A1 00779 5435640		

Mouser Electronics

Authorized Distributor

Click to View Pricing, Inventory, Delivery & Lifecycle Information:

[TE Connectivity:](#)

[5435640-4](#)