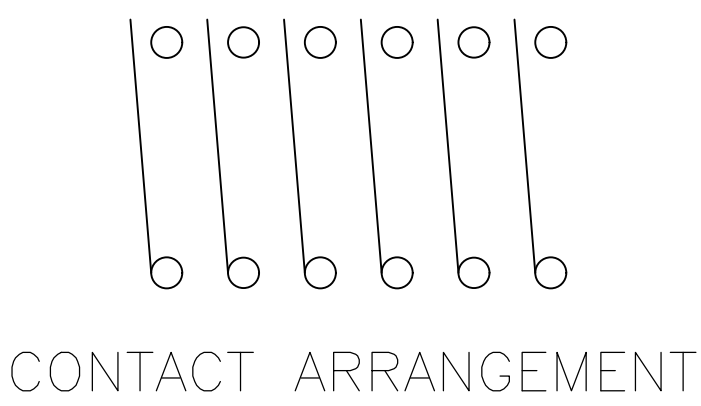
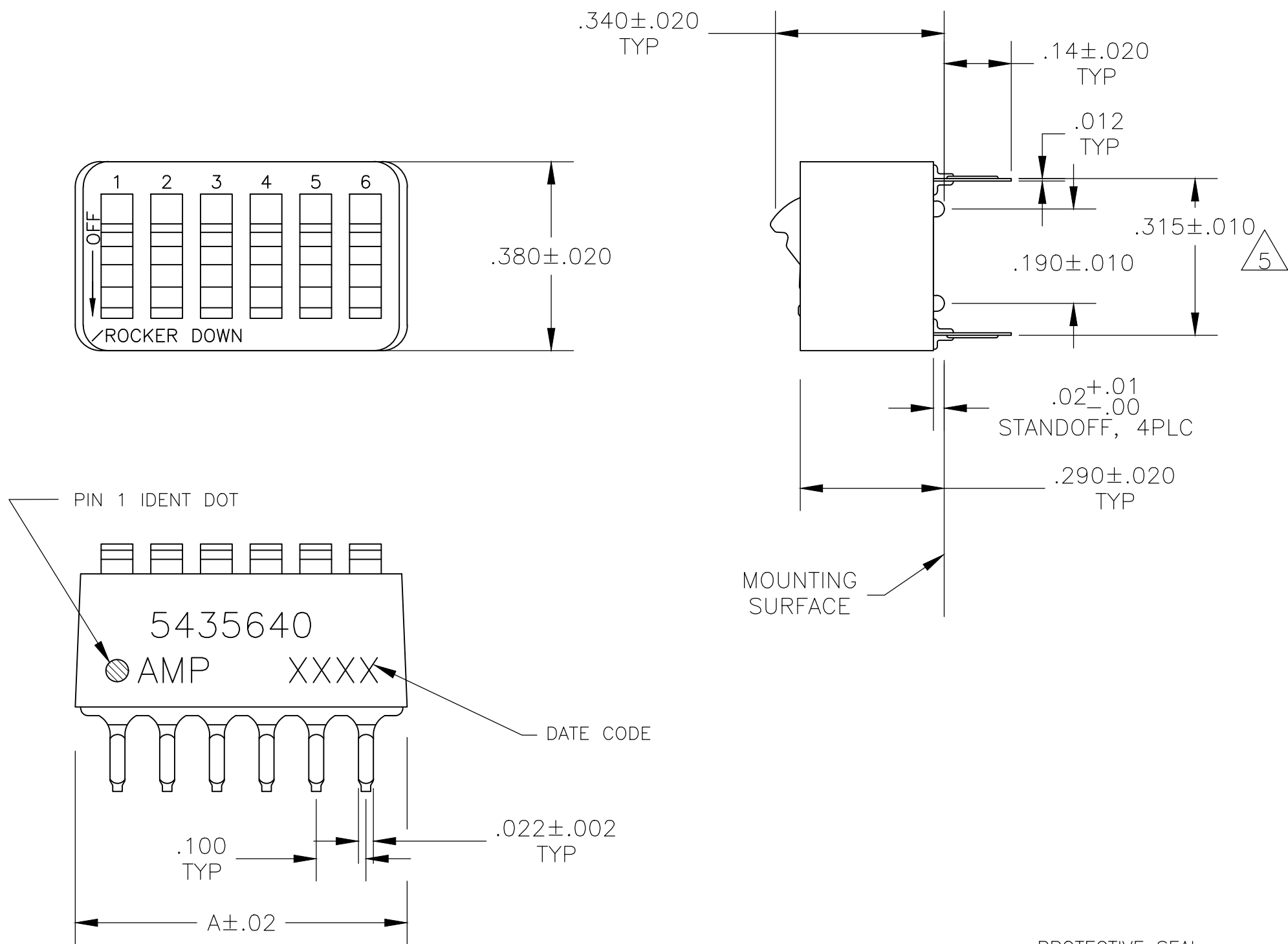


D

C

B

A



- FOR ADDITIONAL SPECIFICATIONS SEE AMP PRODUCT SPEC 108-7532.
- SWITCH SHOWN IN OPEN POSITION.
- ALL CHARACTERS AND ROCKERS ARE WHITE, HOUSING IS BLUE.
- LASER MARKING WILL VARY ON 2 AND 3 POSITION SIDES DUE TO SPACE RESTRICTIONS.
- .315 DIMENSION APPLIES AT TERMINAL TIPS. TERMINALS ARE .300+.010 -.000 AT MOUNTING SURFACE.
- STRIPPABLE TRANSPARENT SEAL, SEE FIG 1.
- STRIPPABLE TRANSPARENT SEAL, SEE FIG 1.
- MATERIAL: HOUSING & ROCKERS- POLYESTER CONTACTS & SOLDER LEAD-COPPER ALLOY
- FINISH: CONTACTS- GOLD OVER NICKEL SOLDER LEAD- TIN OVER NICKEL
- ALL MATERIALS AND FINISHES SHALL COMPLY WITH EU DIRECTIVE 2002 /95/EC OF 27JAN2003(ROHS).
- OBSOLETE PARTS: OBSOLETE CIS STREAMLINING PER D.RENAUD/D.SINISI
- MARKS WILL BE ADDED BY LASER MARK PROCESS.

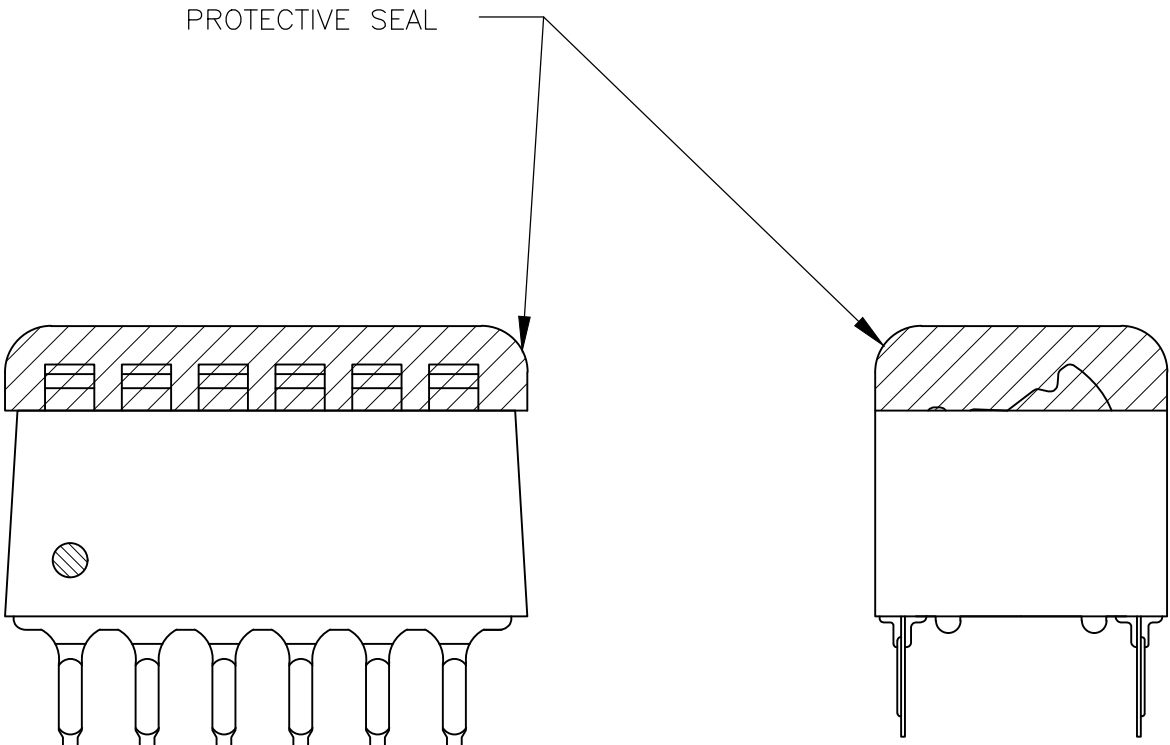


FIG 1

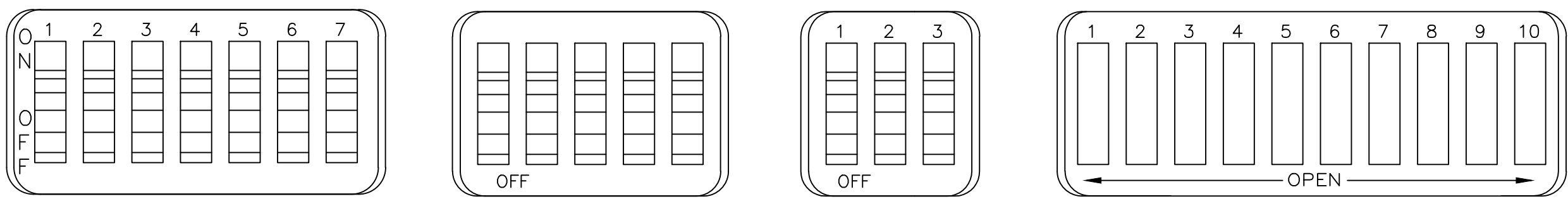


FIG 2

FIG 3

FIG 4

FIG 5

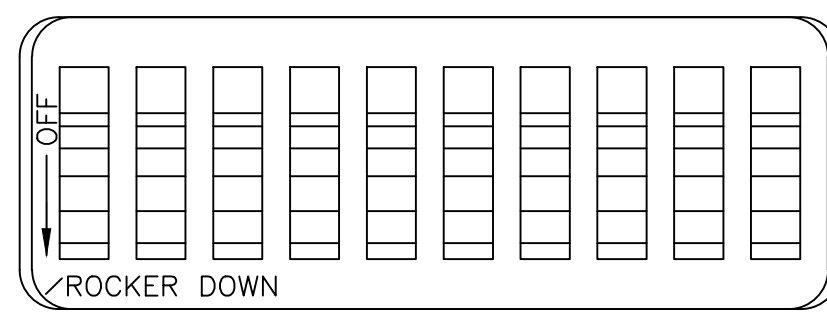


FIG 6

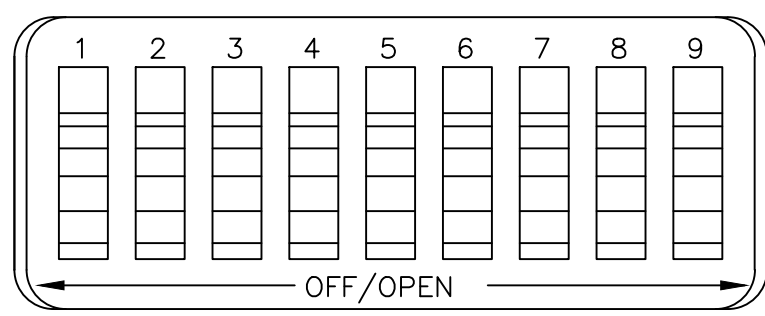


FIG 7

<div><div>11</div><div>OBSOLETE</div></div>	FIG 6	1.08	10	6-5435640-1
	FIG 7	.58	5	6-5435640-0
		.48	4	5-5435640-9
		.88	8	5-5435640-8
<div><div>11</div><div>OBSOLETE</div></div>	FIG 5	.98	9	5-5435640-7
		.68	6	5-5435640-6
		.58	5	5-5435640-5
		.48	4	5-5435640-4
	FIG 2	.88	8	5-5435640-3
	FIG 5	1.08	10	5-5435640-1
	FIG 3	.88	8	5-5435640-0
		.58	5	4-5435640-9
<div><div>11</div><div>OBSOLETE</div></div>	NONE	1.08	10	4-5435640-7
	AS SHOWN	1.28	12	4-5435640-3
		1.08	10	4-5435640-1
		.98	9	4-5435640-0
		.88	8	3-5435640-9
		.78	7	3-5435640-8
		.68	6	3-5435640-7
		.58	5	3-5435640-6
		.48	4	3-5435640-5
	FIG 4	1.28	12	3-5435640-2
		.38	3	3-5435640-0
	AS SHOWN	.28	2	2-5435640-9
		1.08	10	5435640-7
		.98	9	5435640-6
		.88	8	5435640-5
		.68	6	5435640-4
.58		5	5435640-3	
AS SHOWN	.48	4	5435640-2	
	.78	7	5435640-1	
TOP MARKING	A	NO OF POSN	PART NO.	

THIS DRAWING IS A CONTROLLED DOCUMENT.

DIMENSIONS: INCHES

TOLERANCES UNLESS OTHERWISE SPECIFIED:

0 PLC ± -

1 PLC ± -

2 PLC ± -

3 PLC ± .005

4 PLC ± -

ANGLES ± -

MATERIAL

SEE NOTES

DWN BSV 08JAN2005

CHK M. SARVER 13SEP05

APVD M. SARVER 13SEP05

PRODUCT SPEC

APPLICATION SPEC

WEIGHT -

CUSTOMER DRAWING

TE Connectivity

NAME SWITCH ASSY, DIP, TYPE C, 7100 SERIES, SPST, STANDARD

SIZE A1

CAGE CODE 00779

DRAWING NO. 5435640

RESTRICTED TO

SCALE 4:1

SHEET 1 OF 1

REV C

Mouser Electronics

Authorized Distributor

Click to View Pricing, Inventory, Delivery & Lifecycle Information:

[TE Connectivity:](#)

[5435640-5](#)