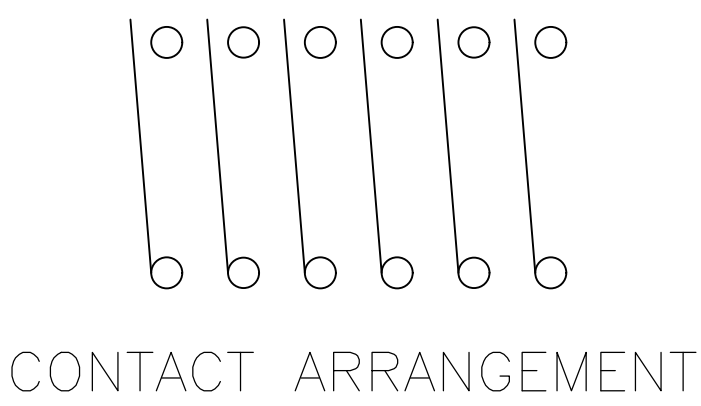
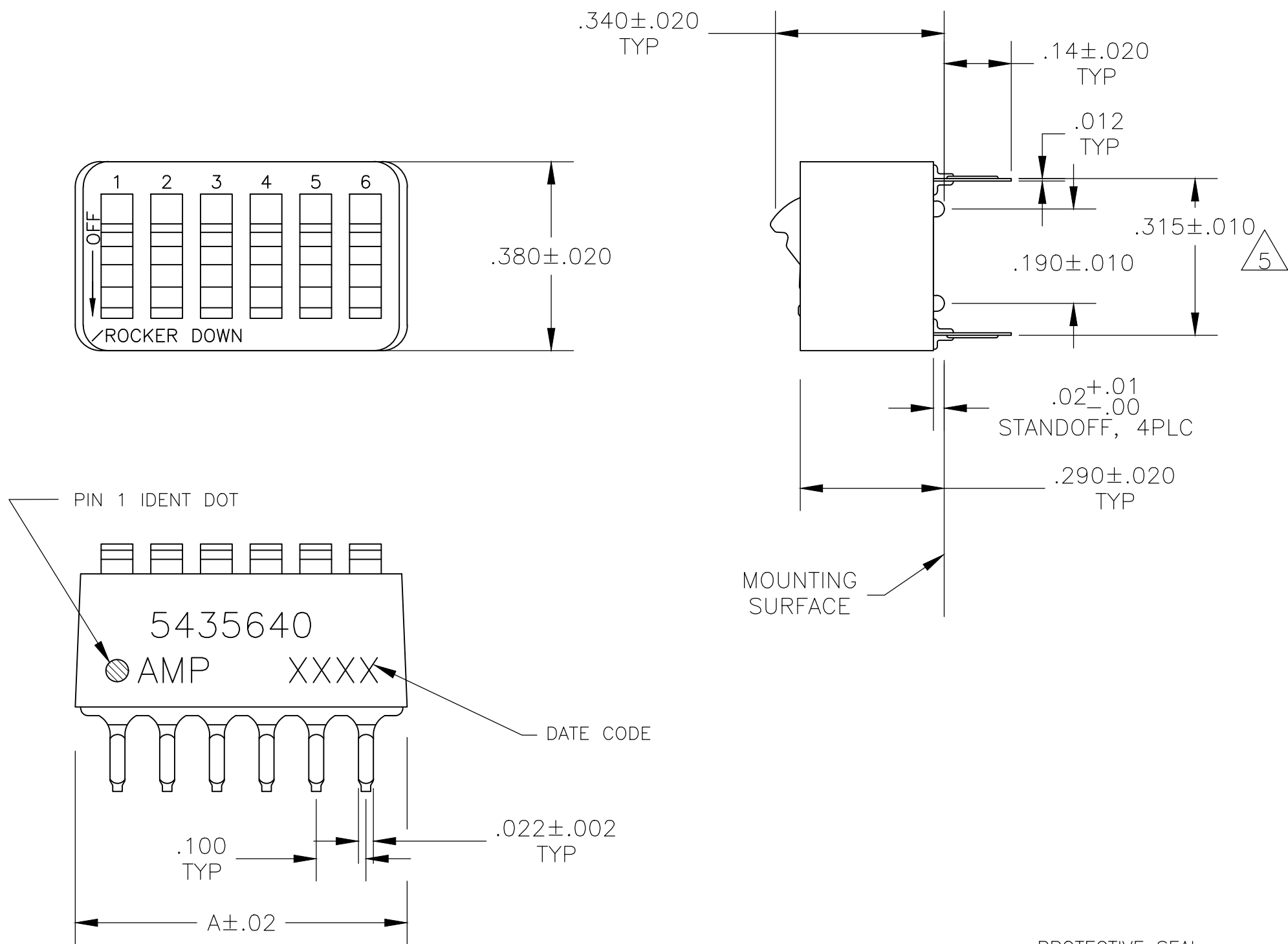


D

C

B

A



- 1 FOR ADDITIONAL SPECIFICATIONS SEE AMP PRODUCT SPEC 108-7532.
- 2 SWITCH SHOWN IN OPEN POSITION.
- 3 ALL CHARACTERS AND ROCKERS ARE WHITE, HOUSING IS BLUE.
- 4 LASER MARKING WILL VARY ON 2 AND 3 POSITION SIDES DUE TO SPACE RESTRICTIONS.
- 5 .315 DIMENSION APPLIES AT TERMINAL TIPS. TERMINALS ARE .300+.010 -.000 AT MOUNTING SURFACE.
- 6 STRIPPABLE TRANSPARENT SEAL, SEE FIG 1.
- 7 STRIPPABLE TRANSPARENT SEAL, SEE FIG 1.
- 8 MATERIAL: HOUSING & ROCKERS- POLYESTER CONTACTS & SOLDER LEAD-COPPER ALLOY
- 9 FINISH: CONTACTS- GOLD OVER NICKEL SOLDER LEAD- TIN OVER NICKEL
- 10 ALL MATERIALS AND FINISHES SHALL COMPLY WITH EU DIRECTIVE 2002 /95/EC OF 27JAN2003(ROHS).
- 11 OBSOLETE PARTS: OBSOLETE CIS STREAMLINING PER D.RENAUD/D.SINISI
- 12 MARKS WILL BE ADDED BY LASER MARK PROCESS.

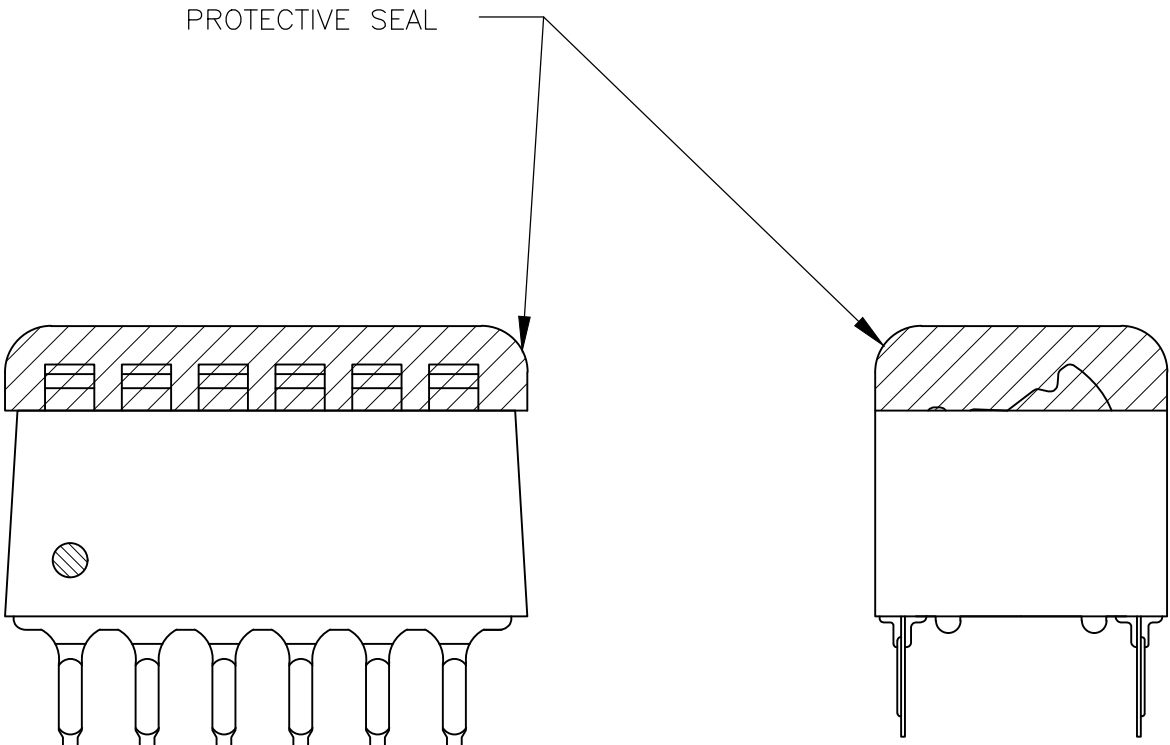


FIG 1

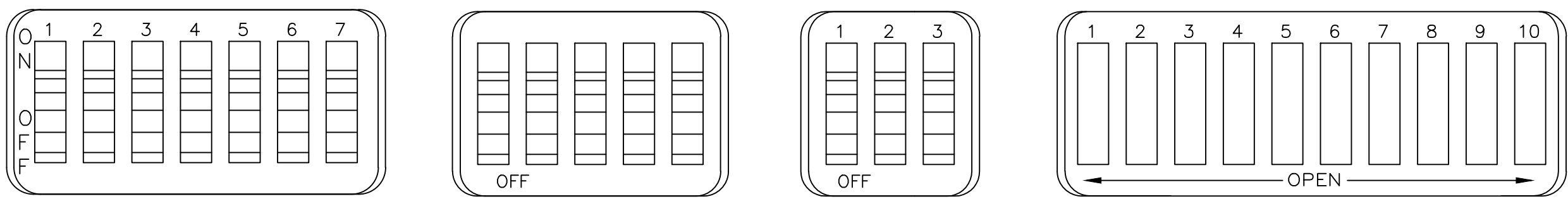


FIG 2

FIG 3

FIG 4

FIG 5

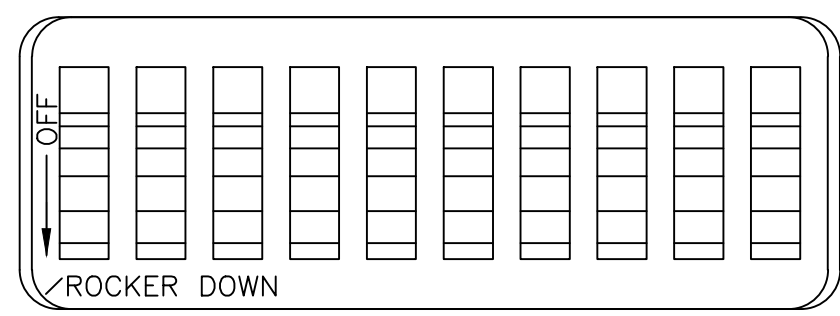


FIG 6

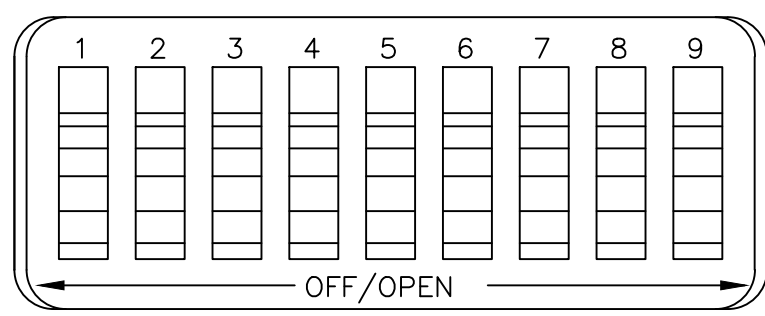


FIG 7

| | | | | |
|---|-------------|-------|------------------------|------------------------|
| <div><div>11</div><div>OBSOLETE</div></div> | FIG 6 | 1.08 | 10 | 6-5435640-1 |
| | | .58 | 5 | 6-5435640-0 |
| | FIG 7 | .48 | 4 | 5-5435640-9 |
| | | .88 | 8 | 5-5435640-8 |
| .98 | | 9 | 5-5435640-7 | |
| <div><div>11</div><div>OBSOLETE</div></div> | FIG 5 | .68 | 6 | 5-5435640-6 |
| | | .58 | 5 | 5-5435640-5 |
| | | .48 | 4 | 5-5435640-4 |
| | FIG 2 | .88 | 8 | 5-5435640-3 |
| | FIG 5 | 1.08 | 10 | 5-5435640-1 |
| | OBSOLETE | FIG 3 | .88 | 8 |
| .88 | | | 8 | 4-5435640-9 |
| .58 | | | 5 | 4-5435640-8 |
| <div><div>11</div><div>OBSOLETE</div></div> | NONE | 1.08 | 10 | 4-5435640-7 |
| | AS SHOWN | 1.28 | 12 | 4-5435640-3 |
| | | 1.08 | 10 | 4-5435640-1 |
| | | .98 | 9 | 4-5435640-0 |
| | | .88 | 8 | 3-5435640-9 |
| | | .78 | 7 | 3-5435640-8 |
| | | .68 | 6 | 3-5435640-7 |
| | | .58 | 5 | 3-5435640-6 |
| | | .48 | 4 | 3-5435640-5 |
| | FIG 4 | 1.28 | 12 | 3-5435640-2 |
| | | .38 | 3 | 3-5435640-0 |
| | AS SHOWN | .28 | 2 | 2-5435640-9 |
| | | 1.08 | 10 | 5435640-7 |
| | | .98 | 9 | 5435640-6 |
| | | .88 | 8 | 5435640-5 |
| | | .68 | 6 | 5435640-4 |
| | | .58 | 5 | 5435640-3 |
| AS SHOWN | .48 | 4 | 5435640-2 | |
| | .78 | 7 | 5435640-1 | |
| | TOP MARKING | A | NO OF POSN | PART NO. |

THIS DRAWING IS A CONTROLLED DOCUMENT.

DIMENSIONS: INCHES

TOLERANCES UNLESS OTHERWISE SPECIFIED:

0 PLC ± -

1 PLC ± -

2 PLC ± -

3 PLC ± .005

4 PLC ± -

ANGLES ± -

MATERIAL

SEE NOTES

DWN BSV 08JAN2005

CHK M. SARVER 13SEP05

APVD M. SARVER 13SEP05

PRODUCT SPEC

APPLICATION SPEC

WEIGHT -

CUSTOMER DRAWING

TE Connectivity

NAME

SWITCH ASSY, DIP, TYPE C, 7100 SERIES, SPST, STANDARD

SIZE CAGE CODE DRAWING NO

A1007795435640

RESTRICTED TO

SCALE 4:1 SHEET 1 OF 1 REV C

Mouser Electronics

Authorized Distributor

Click to View Pricing, Inventory, Delivery & Lifecycle Information:

[TE Connectivity:](#)

[3-5435640-5](#)