

4

3

2

1

THIS DRAWING IS UNPUBLISHED.

RELEASED FOR PUBLICATION

© COPYRIGHT

ALL RIGHTS RESERVED.

LOC

DIST

REVISIONS

P

LTR

DESCRIPTION

DATE

DWN

APVD

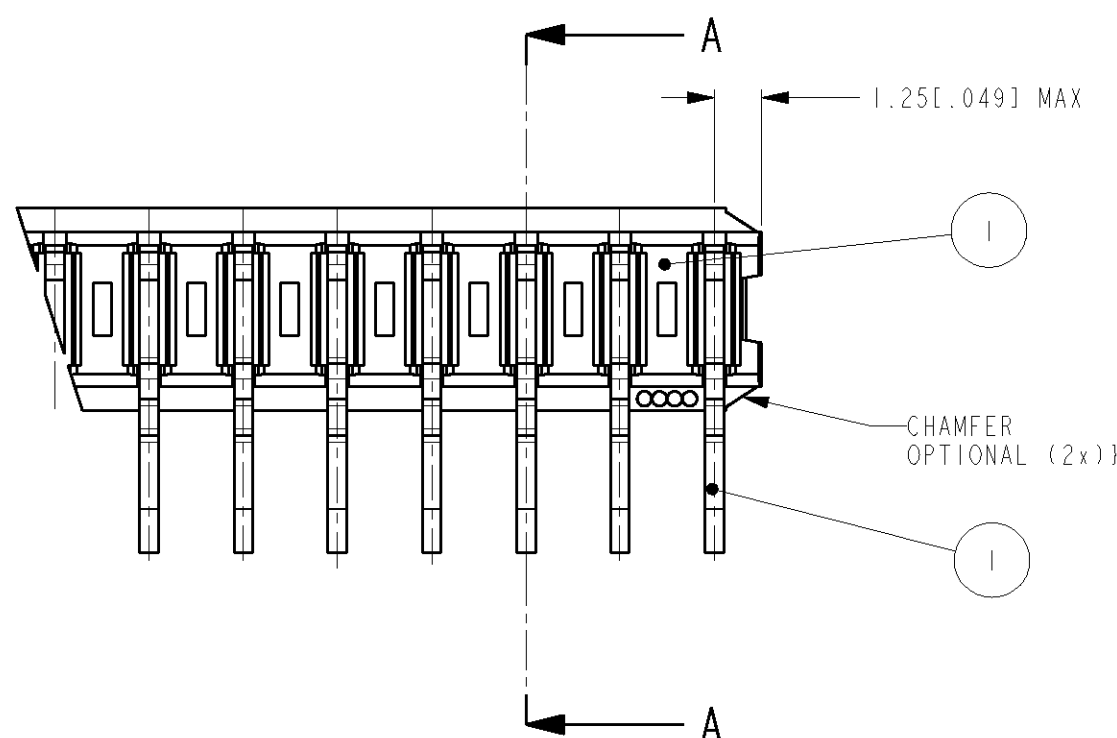
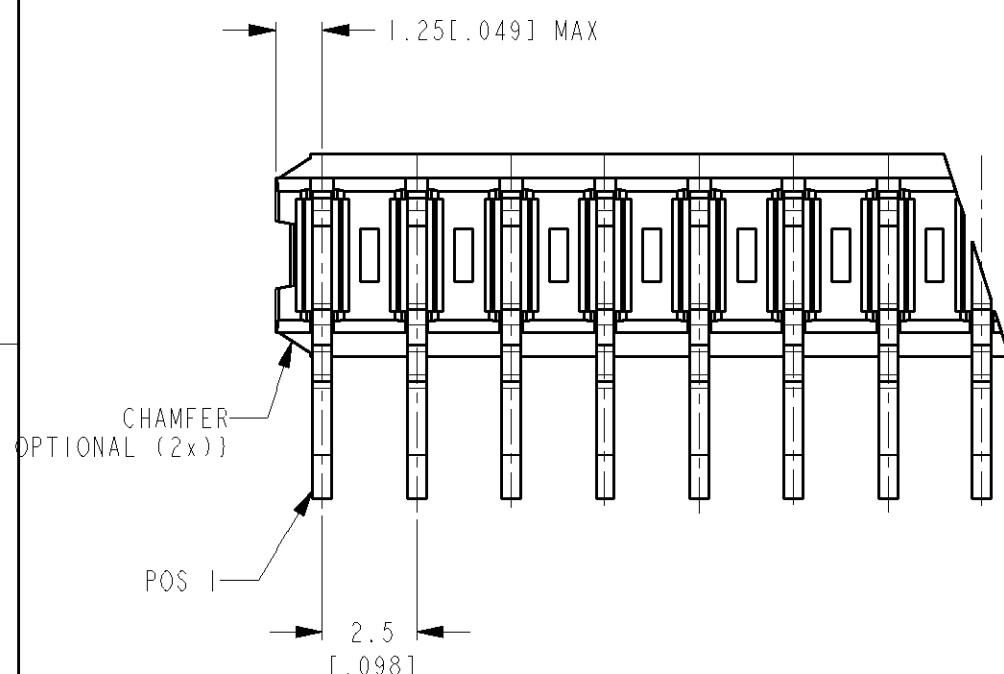
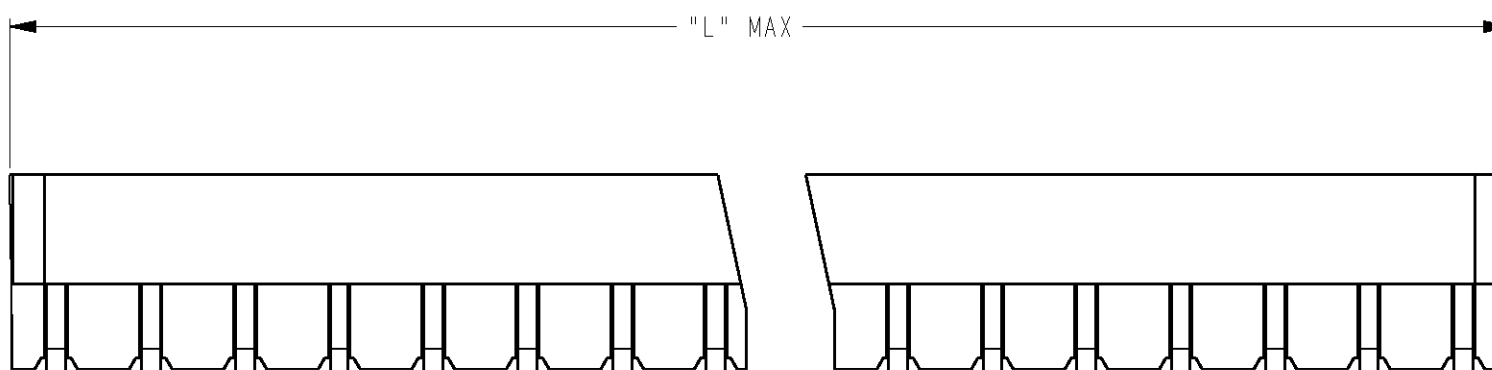
A2

REVISED PER ECO-11-005294

19APR11

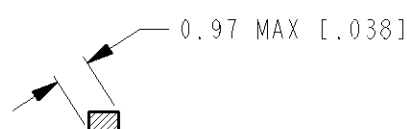
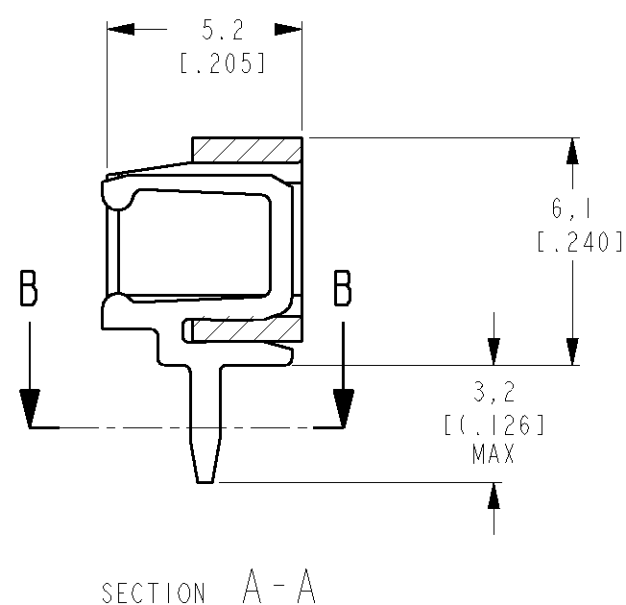
RK

HMR



ORDER NUMBER	NUMBER OF POSITIONS	L MAX.	
		M.M.	INCHES
5164711-3	3	7,5	.296
5164711-4	4	10,0	.394
5164711-5	5	12,5	.493
5164711-6	6	15,0	.591
5164711-7	7	17,5	.690
5164711-8	8	20,0	.788
5164711-9	9	22,5	.886
1-5164711-0	10	25,0	.985
1-5164711-1	11	27,5	1.083
1-5164711-2	12	30,0	1.182
1-5164711-3	13	32,5	1.280
1-5164711-4	14	35,0	1.378
1-5164711-5	15	37,5	1.477
1-5164711-6	16	40,0	1.575
1-5164711-7	17	42,5	1.674
1-5164711-8	18	45,0	1.772
1-5164711-9	19	47,5	1.871
2-5164711-0	20	50,0	1.969

1
OBSOLETE



1 OBSOLETE PARTS: OBSOLETE CIS STREAMLINING PER D.RENAUD/D.SINISI

2	CONTACT	BRASS	TIN OVER NICKEL	SEE TABLE
1	HOUSING	PBT, 20% GF	GREEN	1
ITEM NO.	DESCRIPTION	MATERIAL	FINISH	QUANTITY

DIMENSIONS: mm		TOLERANCES UNLESS OTHERWISE SPECIFIED:	DWN 31 mar 05 M.Gosselink CHK 31 mar 05 M.Gosselink APVD -	TE Connectivity	
0 PLC ±-		1 PLC ±-	PRODUCT SPEC	NAME	
2 PLC ±-		3 PLC ±-	108-19027	3-20 POS FEMALE BOARD TO BOARD	
4 PLC ±-		ANGLES ±-	APPLICATION SPEC	CONNECTOR ASSEMBLY FOR MINI-MATCH	
MATERIAL -		FINISH -	WEIGHT -	INTERCONNECTION SYSTEM, PITCH 2.5 MM	
CUSTOMER DRAWING		SCALE -	SHEET OF	RESTRICTED TO	REV A2
				SIZE A3	CAGE CODE 00779
				DRAWING NO	©=5164711

Mouser Electronics

Authorized Distributor

Click to View Pricing, Inventory, Delivery & Lifecycle Information:

[TE Connectivity:](#)

[5164711-7](#)