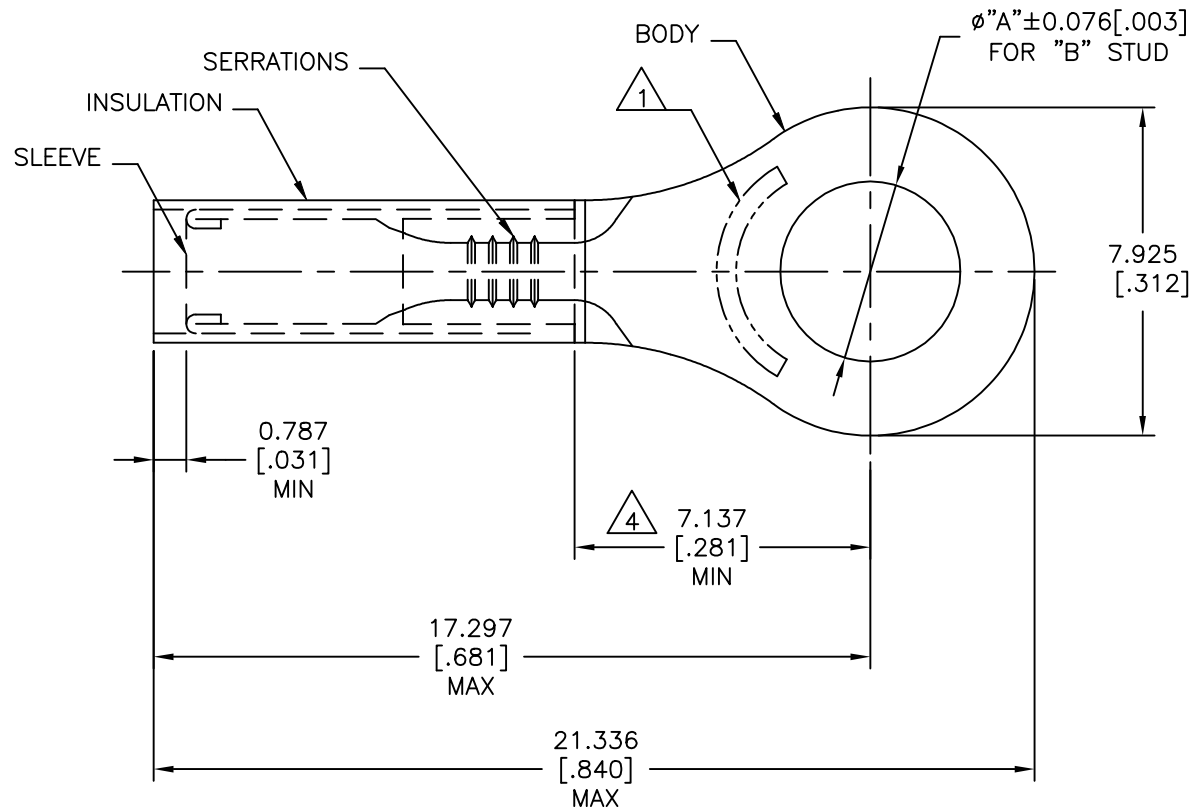


THIS DRAWING IS UNPUBLISHED.

RELEASED FOR PUBLICATION

© COPYRIGHT - By -

ALL RIGHTS RESERVED.

**AMP**  
WIRE RANGE22-20 AWG  
STRANDED

## REVISIONS

P	LTR	DESCRIPTION	DATE	DWN	APVD
	H6	REVISED PER ECO-15-016493	27NOV2015	NK	DR
	H7	REVISED PER ECO-17-016703	30MAR2018	RS	DR

- 1 STAMP AMP 22-20 APPROX AS SHOWN
- 2 FOR 0.889[.035] TO 2.540[.100] WIRE INSULATION DIA
- 3 BODY MATERIAL THK: 5.842±0.051 [.023±.002]
- 4 DIMENSION APPLIES FROM EDGE OF METAL WIRE BARREL TO CENTER OF STUD HOLE.
- 5 BODY: MATERIAL - COPPER ASTM B152  
FINISH - OVER NICKEL PLATE SAE AMS  
SAE AMS QQ-N-290 0.0076[.0003] AVG EXT. THK.
- 6 SLEEVE: MATERIAL - COPPER, ASTM B152  
FINISH - NICKEL PL, SAE AMS QQ-N-290  
0.00076[.00003] AVG EXT. THK
- 7 INSULATION:  
MATERIAL - PTFE ASTM D3295  
COLOR: GREEN
- 8 NOTE DELETED

7	#10	5.004[.197]	100	LOOSE PIECE,BAG	8-50832-1
7	#10	5.004[.197]	2500	50832-1 ON TAPE	50832-3
7	M4 [#8]	4.343[.171]	2500	50832 ON TAPE	50832-2
7	#10	5.004[.197]	1000	LOOSE PIECE	50832-1
7	M4 [#8]	4.343[.171]	1000	LOOSE PIECE	50832
	"B"	"A"	QTY	PACKAGE TYPE	PART NO.

AMP INCORPORATED  
CUSTOMER SERVICE SYSTEMSMAX RECOMMENDED OPERATING  
TEMPERATURE:

288°C [550°F]

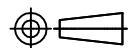
VOLTAGE RATING:

300V MAX

CIRCULAR MIL AREA:

0.26-0.65mm<sup>2</sup> [509-1,290]  
STRANDED WIRE ONLY

THIS DRAWING IS A CONTROLLED DOCUMENT.

DIMENSIONS:  
mm [INCHES]

MATERIAL

5 6 7

TOLERANCES UNLESS  
OTHERWISE SPECIFIED:

0 PLC	± -
1 PLC	± -
2 PLC	± -
3 PLC	± 0.127[.005]
4 PLC	± -
4 ANGLES	± 1°

FINISH

5 6 7

DWN JR RUTH 30JAN03

CHK T MICHELUTTI 30JAN03

APVD T MICHELUTTI 30JAN03

PRODUCT SPEC

APPLICATION SPEC

WEIGHT

CUSTOMER DRAWING



TE Connectivity Ltd.

NAME  
TERMINAL, PIDG,  
STRATO-THERM, RING TONGUE,  
22-20 AWG

SIZE CAGE CODE DRAWING NO RESTRICTED TO

A3 00779 C=50832

SCALE 8:1 SHEET 1 OF 1 REV H7

# Mouser Electronics

Authorized Distributor

Click to View Pricing, Inventory, Delivery & Lifecycle Information:

[TE Connectivity:](#)

[50832](#)