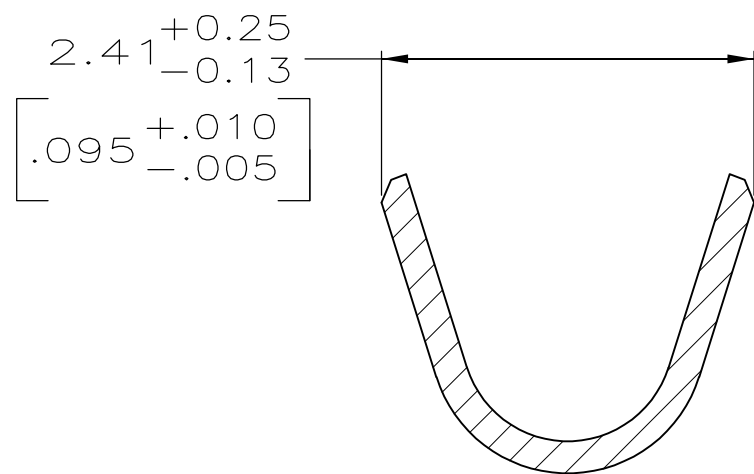
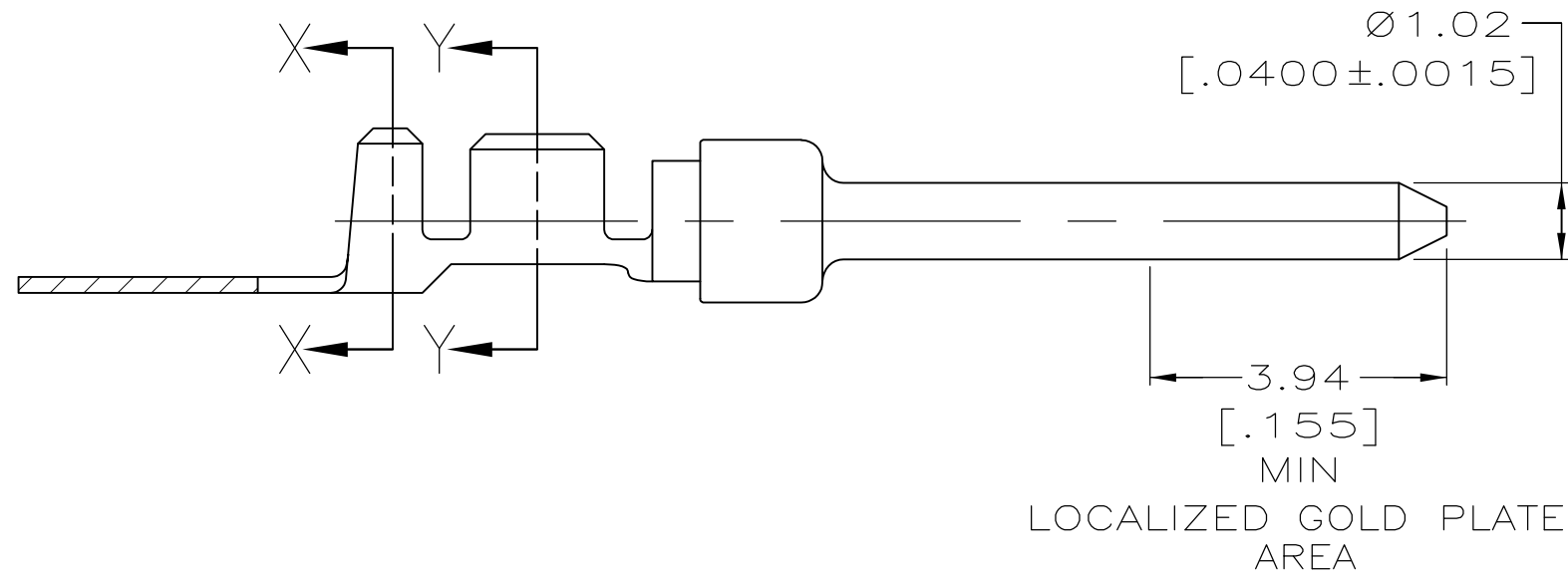
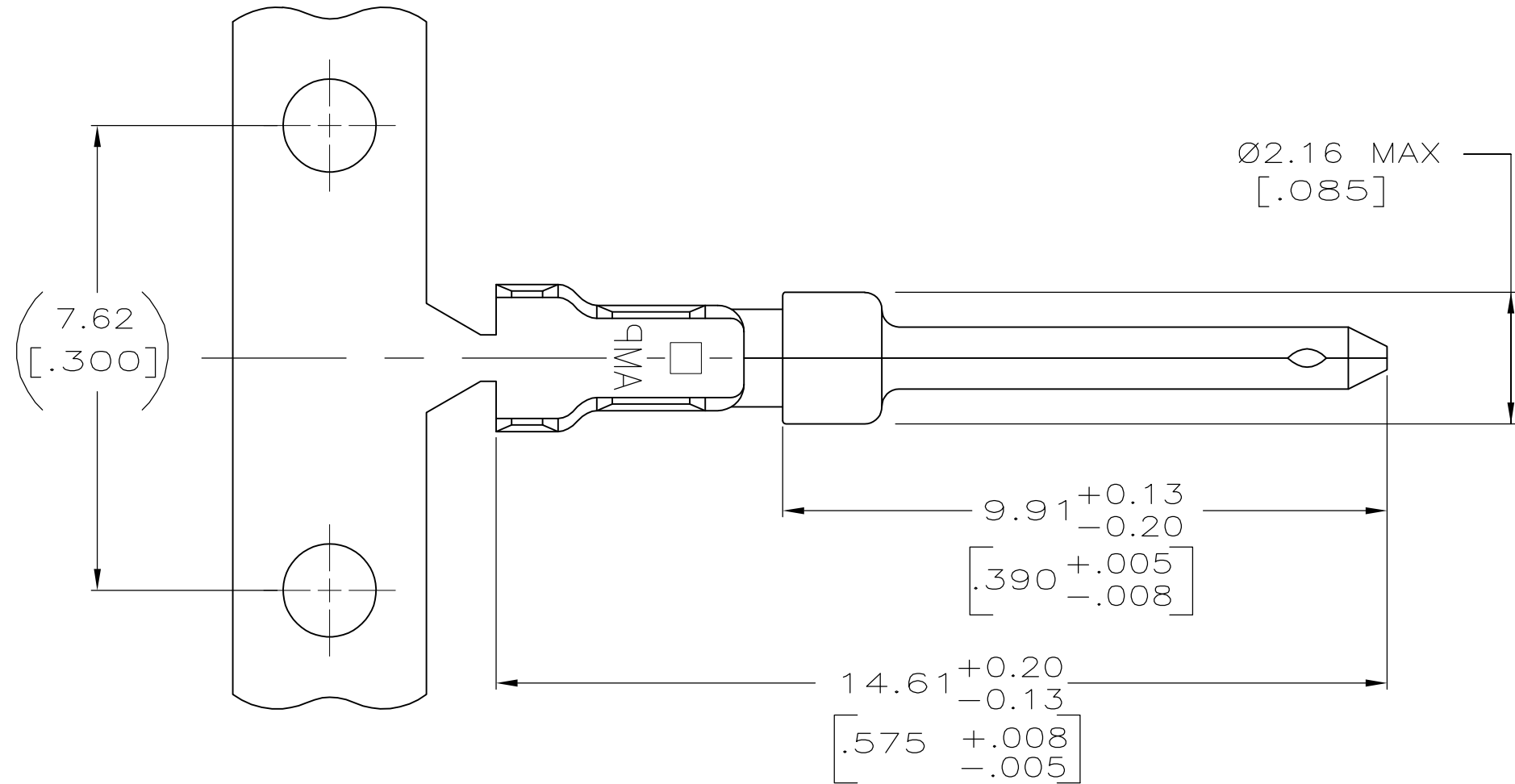
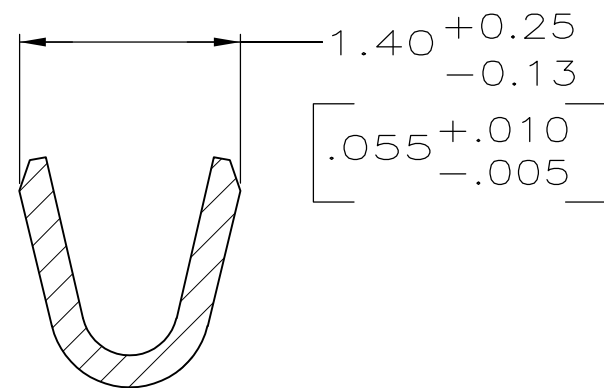


LOC	DIST	REVISIONS					
		P	LTR	DESCRIPTION	DATE	DWN	APVD
GP	00		C	REVISED PER ECO-08-011977	24JUL08	JDP	CWR



SECTION X-X  
INSULATION BARREL  
SCALE 20:1



SECTION Y-Y  
WIRE BARREL  
SCALE 20:1

- 1 FOR MINI-APPLICATOR.
2. WIRE RANGE OF 24-28 AWG, INSULATION RANGE OF 1.27-1.52  $[\text{.050} - \text{.060}]$ .
- 3 GOLD FLASH PLATED IN LOCALIZED GOLD PLATE AREA,  $2.54\mu\text{m}$   $[\text{.000100}]$  MIN TIN PLATED WIRE BARRELS, ALL OVER  $0.76\mu\text{m}$   $[\text{.000030}]$  MIN NICKEL UNDERPLATE.
- 4 GOLD PLATED IN LOCALIZED GOLD PLATE AREA AS FOLLOWS:  
 $0.76\mu\text{m}$   $[\text{.000030}]$  MIN GOLD IN MATED AREA,  
 $2.54\mu\text{m}$   $[\text{.000100}]$  MIN TIN ON WIRE BARRELS, ALL OVER  
 $1.27\mu\text{m}$   $[\text{.000050}]$  MIN NICKEL UNDERPLATE.  
OR  
GOLD FLASH OVER  
PALLADIUM-NICKEL PLATE,  $0.76\mu\text{m}$   $[\text{.000030}]$  MIN TOTAL IN MATED AREA,  
 $2.54\mu\text{m}$   $[\text{.000100}]$  MIN TIN ON WIRE BARRELS, ALL OVER  
 $1.27\mu\text{m}$   $[\text{.000050}]$  MIN NICKEL UNDERPLATE.

4	5066682-9
3	5066682-6
FINISH	PART NUMBER 1

THIS DRAWING IS A CONTROLLED DOCUMENT.		DWN 11-10-04 G. ATTADIA - DOCK5	Tyco Electronics Corporation Harrisburg, PA 17105-3608			
DIMENSIONS: mm [INCHES]		CHK 11-10-04 S. BOLASH				
		APVD 11-10-04 M. WALMSLEY	NAME			
		PRODUCT SPEC 108-40005	PIN CONTACT, SIZE 20 DF, 24-28 AWG, AMPLIMITE			
MATERIAL		APPLICATION SPEC 114-10000	SIZE	CAGE CODE	DRAWING NO	RESTRICTED TO
BRASS		WEIGHT -	A2	00779	C=5066682	-
TOLERANCES UNLESS OTHERWISE SPECIFIED:		CUSTOMER DRAWING				
0 PLC ± - 1 PLC ± - 2 PLC ± 0.13 [.005] 3 PLC ± - 4 PLC ± - ANGLES ± - FINISH		SEE TABLE				
		SCALE 10:1	SHEET 1 OF 1	REV C		

# Mouser Electronics

Authorized Distributor

Click to View Pricing, Inventory, Delivery & Lifecycle Information:

[TE Connectivity:](#)

[5066682-6](#)