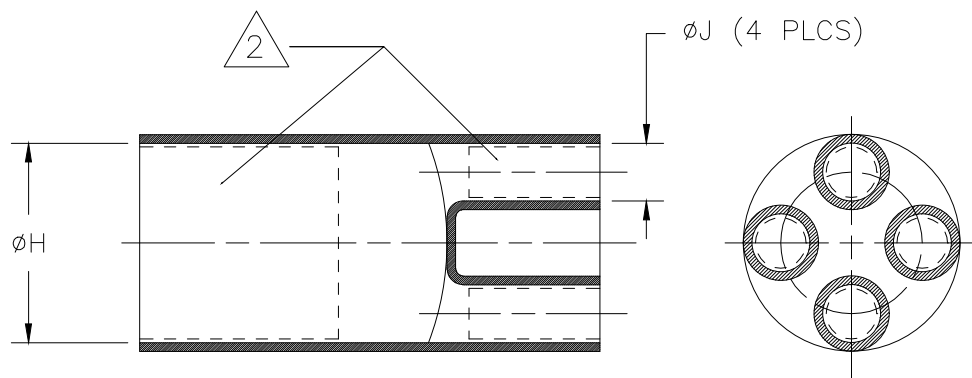
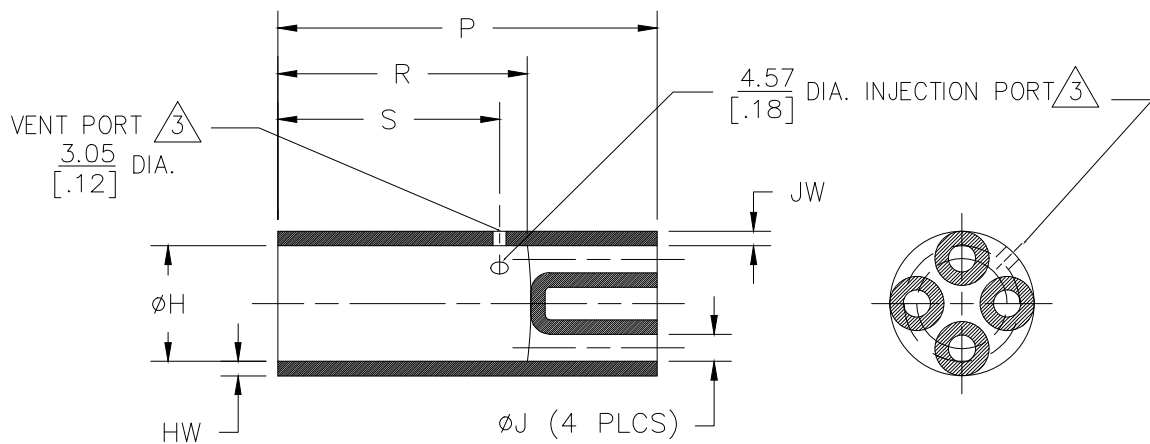


REVISIONS

P	LTR	DESCRIPTION	DATE	DWN	APVD
	H	PRODUCTION ISSUE	30JAN2019	PNT	MT



AS SUPPLIED



AFTER UNRESTRICTED RECOVERY

TABLE OF DIMENSIONS

PART DESCRIPTION	H		J		P ±10% b	R ±10% b	S REF b	HW ±20% b	JW ±20% b
	MIN	MAX	MIN	MAX					
	a	b	a	b					
502A812	22.8 [.90]	11.9 [.47]	7.1 [.28]	2.8 [.11]	69.8 [2.75]	50.8 [2.00]	44.4 [1.75]	4.3 [.17]	1.3 [.05]
502A823	34.3 [1.35]	20.3 [.80]	12.2 [.48]	4.8 [.19]	88.9 [3.50]	63.5 [2.50]	57.1 [2.25]	2.8 [.11]	2.3 [.09]
502A834	52.1 [2.05]	27.7 [1.09]	20.3 [.80]	7.1 [.28]	107.9 [4.25]	76.2 [3.00]	69.8 [2.75]	7.6 [.30]	4.1 [.16]
502A845	83.8 [3.30]	43.9 [1.73]	36.0 [1.42]	12.7 [.50]	127.0 [5.00]	88.9 [3.50]	82.5 [3.25]	3.0 [.12]	3.0 [.12]

DIMENSIONS:
mm [INCHES]

DWN PRAVEEN N T 30JAN2019

MATERIAL SEE SHEET 2

FINISH -

TOLERANCES UNLESS
OTHERWISE SPECIFIED:

CHK N NAGAR 30JAN2019

APVD M TAYLOR 30JAN2019

PRODUCT SPEC

APPLICATION SPEC

WEIGHT

CUSTOMER DRAWING



TE Connectivity Ltd.

NAME

TRANSITION, 1 TO 4

SIZE

CAGE CODE

DRAWING NO

RESTRICTED TO

A4

00779

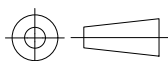
C-

502A812-XX-0THRU845-XX-0

SCALE DNS

SHEET 1 OF 2

REV H



REVISIONS

P	LTR	DESCRIPTION	DATE	DWN	APVD
	—	SEE SHEET 1	—	—	—

COMPATABILITY CHART

MATERIAL DASH NO.	MATERIAL DESCRIPTION	RT SPEC	COATING SLASH NO.	COATING S NO.
-3	Polyolefin, Semi-rigid	RT-301	/42;/86;/180	S1017;S1048;S1030
-4	Polyolefin, Flexible	RT-1304	/42;/86;/180	S1017;S1048;S1030
-25	Elastomer, Fluid Resistant	RW-2070	/42;/86;/225	S1017;S1048;S1206
-100	Polyolefin, semi-flexible Zerohal	RW-2082	/86;/180	S1048;S1030

ORDERING INFORMATION

BASE PART NUMBER _____
 MATERIAL DASH NUMBER _____
 MODIFICATION NUMBER _____
 ADHESIVE SLASH NUMBER _____
 (SEE COMPATIBILITY CHART BELOW)
 COLOR DESIGNATOR _____

502A812 -XX -XX /XX -0

NOTES

- DIMENSIONS APPEARING IN TABLE ARE AS FOLLOWS:
 - AS SUPPLIED
 - AFTER UNRESTRICTED RECOVERY
- COATING (ADHESIVE): IS OPTIONAL. AS SUPPLIED DIMENSIONS APPEARING IN TABLE ARE FOR UNCOATED PARTS. WHEN COATING IS ADDED, ENTRY DIAMETER WILL BE REDUCED BY 1.5mm[.06] MAX.
- MOLDING PORTS ARE OPTIONAL. WHEN -00 MODIFICATION NUMBER IS SPECIFIED MOLDING PORTS WILL BE LOCATED AS SHOWN.


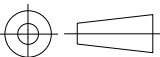
RELEASED FOR PUBLICATION

ALL RIGHTS RESERVED.

COPYRIGHT - TE Connectivity Ltd.



THIS DRAWING IS UNPUBLISHED.

DIMENSIONS: mm [INCHES]	DWN PRAVEEN N T	30JAN2019	MATERIAL —	FINISH —
	CHK N NAGAR	30JAN2019	 TE Connectivity Ltd.	
TOLERANCES UNLESS OTHERWISE SPECIFIED:	APVD M TAYLOR	30JAN2019		
0 PLC ± —	PRODUCT SPEC	NAME	TRANSITION, 1 TO 4	
1 PLC ± 0.50[.1]	—	—		
2 PLC ± 0.25[.01]	APPLICATION SPEC	—	SIZE	CAGE CODE
3 PLC ± 0.13[.005]	—	—	DRAWING NO	RESTRICTED TO
4 PLC ± —	WEIGHT	—	A4	00779
ANGLES ± 1°			C- 502A812-XX-0THRU845-XX-0	
	CUSTOMER DRAWING		SCALE	DNS
			SHEET	2 of 2
				REV
				H

Mouser Electronics

Authorized Distributor

Click to View Pricing, Inventory, Delivery & Lifecycle Information:

[TE Connectivity:](#)

[420463-000](#)