



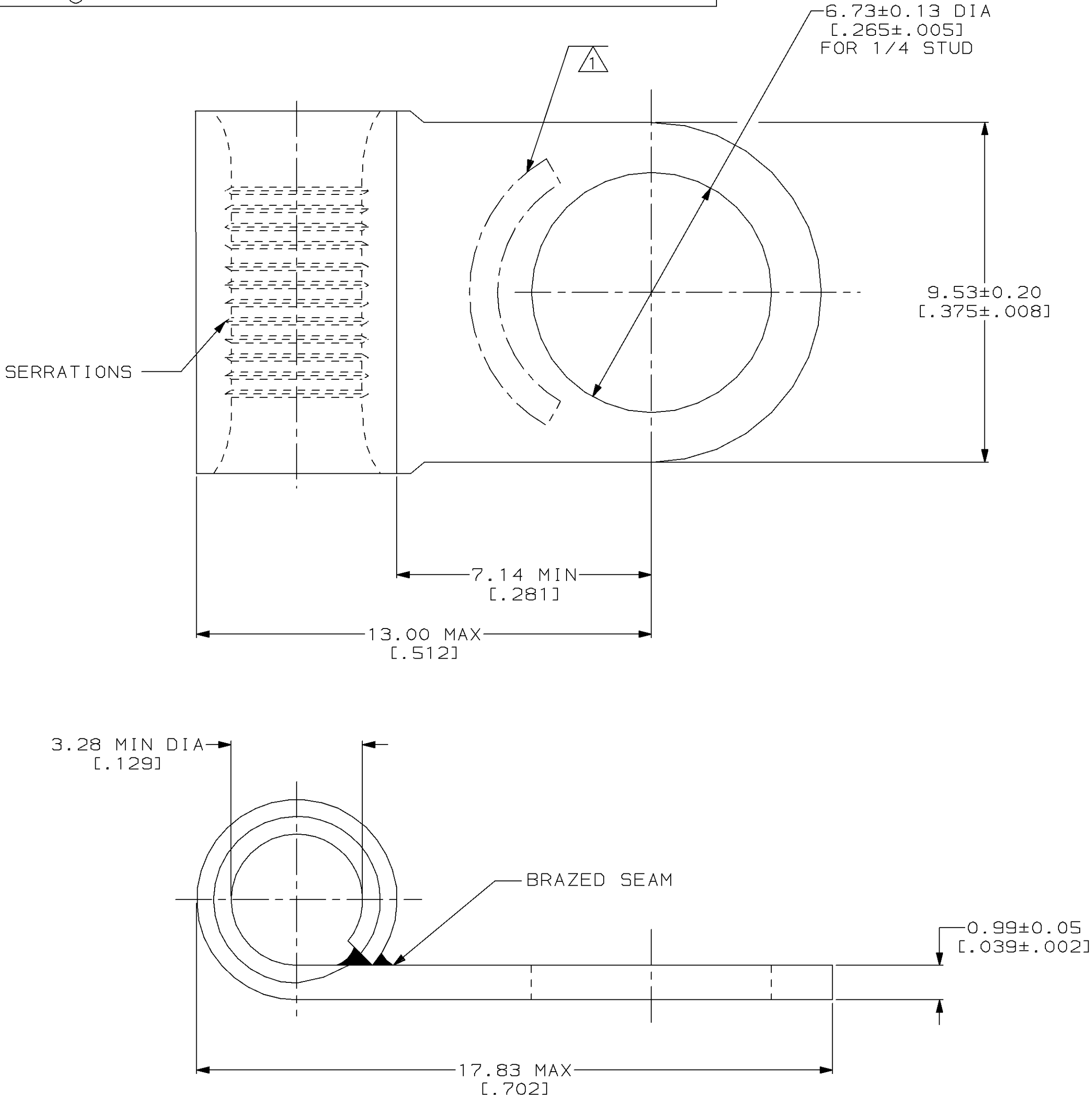
LOC	DIST	P	F	ZONE	LTR	DESCRIPTION	DATE	APPD
G	14				C	REV & REDRAWN PER 0720-0008-93	4-5-93	APPD

METRIC

DIMENSIONS LISTED IN mm [INCHES]

AMP WIRE RANGE	 E13288 Listed
12-10 AWG SOLID OR STRANDED	12-10 AWG STRANDED
 LR7189 Certified	MILITARY P/N AND CLASS
12-10 AWG SOLID OR STRANDED	NOT APPLICABLE

1 STAMP AMP 12-10* APPROX AS SHOWN



AMP INCORPORATED CUSTOMER SERVICE SYSTEMS			MAX RECOMMENDED OPERATING TEMPERATURE: 170°C MAX		DO NOT SCALE PRINT. UNLESS SPECIFIED DIMENSIONS IN mm [INCHES] TOLERANCES ON: 2 PLC DEC ± - 3 PLC DEC ± - ANGLES ± -		DR 4-5-93 TA BRINKMAN		36272		
FOR ADDITIONAL PRODUCT INFORMATION OR COPIES OF DRAWINGS AND TECHNICAL DOCUMENTS			VOLTAGE RATING: NOT APPLICABLE		MATERIAL COPPER PER ASTM B-152 ANNEALED		CHK 4-5-93 DA PATTERSON		PART NO		
PRODUCT INFORMATION CENTER 1-800-522-6752			WIRE CROSS SECTIONAL AREA RANGE: 2.62-6.64mm² [5,180-13,100] CIR MILS SOLID OR STRANDED		FINISH TIN PLATE 0.00254[0.00100] MIN THK PER MIL-T-10727		APPD 4-5-93 DE MILLER		NAME		
TOOLING ASSISTANCE CENTER 1-800-722-1111			THIS DRAWING IS A CONTROLLED DOCUMENT FOR AMP INCORPORATED. IT IS SUBJECT TO CHANGE AND THE CONTROLLING ENGINEERING ORGANIZATION SHOULD BE CONTACTED FOR THE LATEST REVISION.		PRODUCT SPEC -		APPD 4-5-93 JL MECKLEY		TERMINAL, RING TONGUE, FLAG, SOLISTRAND™		
1-800-526-5142					APPLICATION SPEC -		PRODUCT SPEC -		SIZE		
									CAGE CODE		
									DRAWING NO		
									C=36272		
									SCALE 10:1		
									SHEET 1 OF 1		

Mouser Electronics

Authorized Distributor

Click to View Pricing, Inventory, Delivery & Lifecycle Information:

[TE Connectivity:](#)

[36272](#)