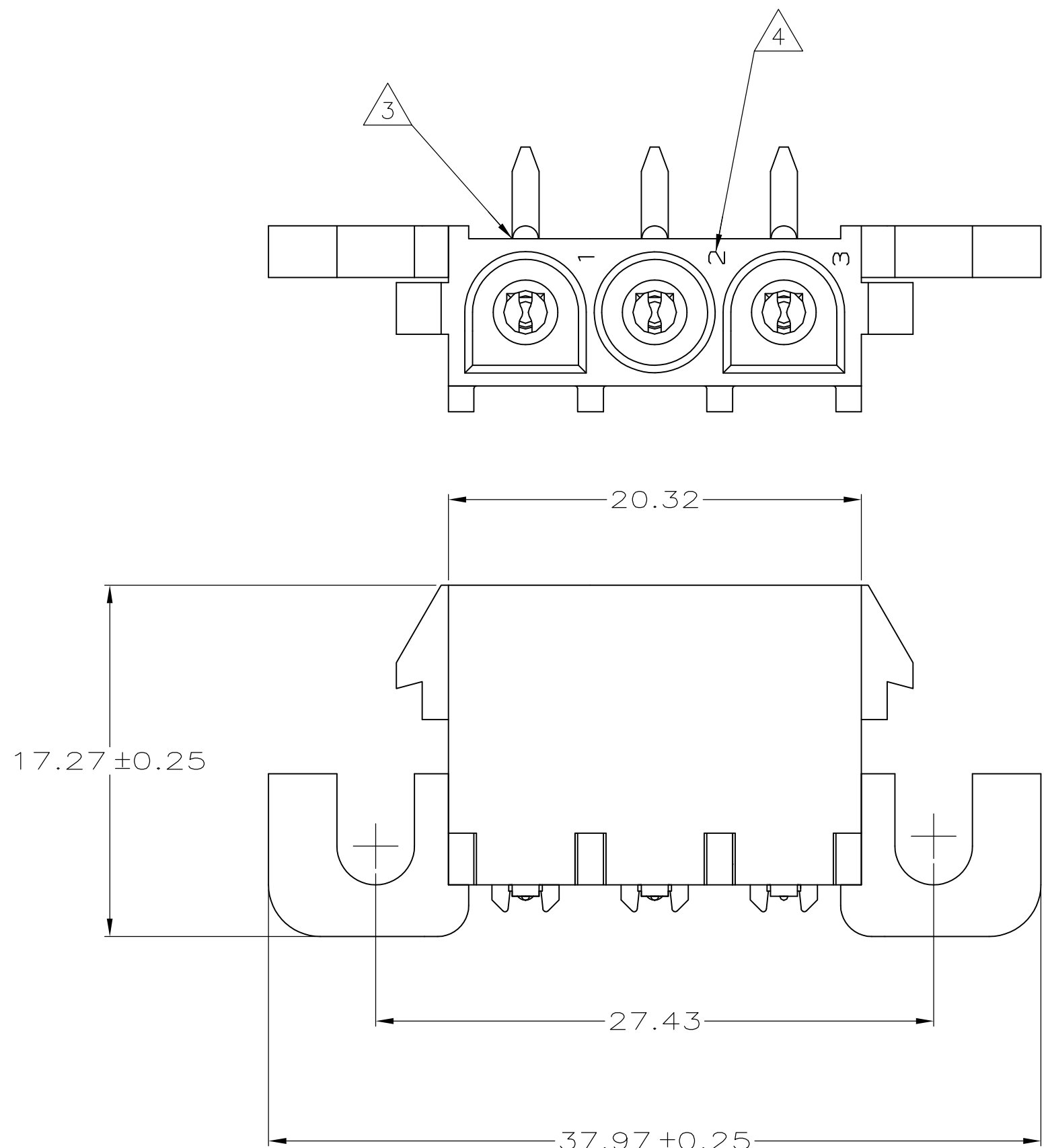
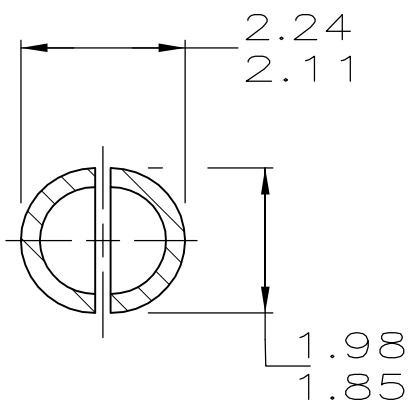
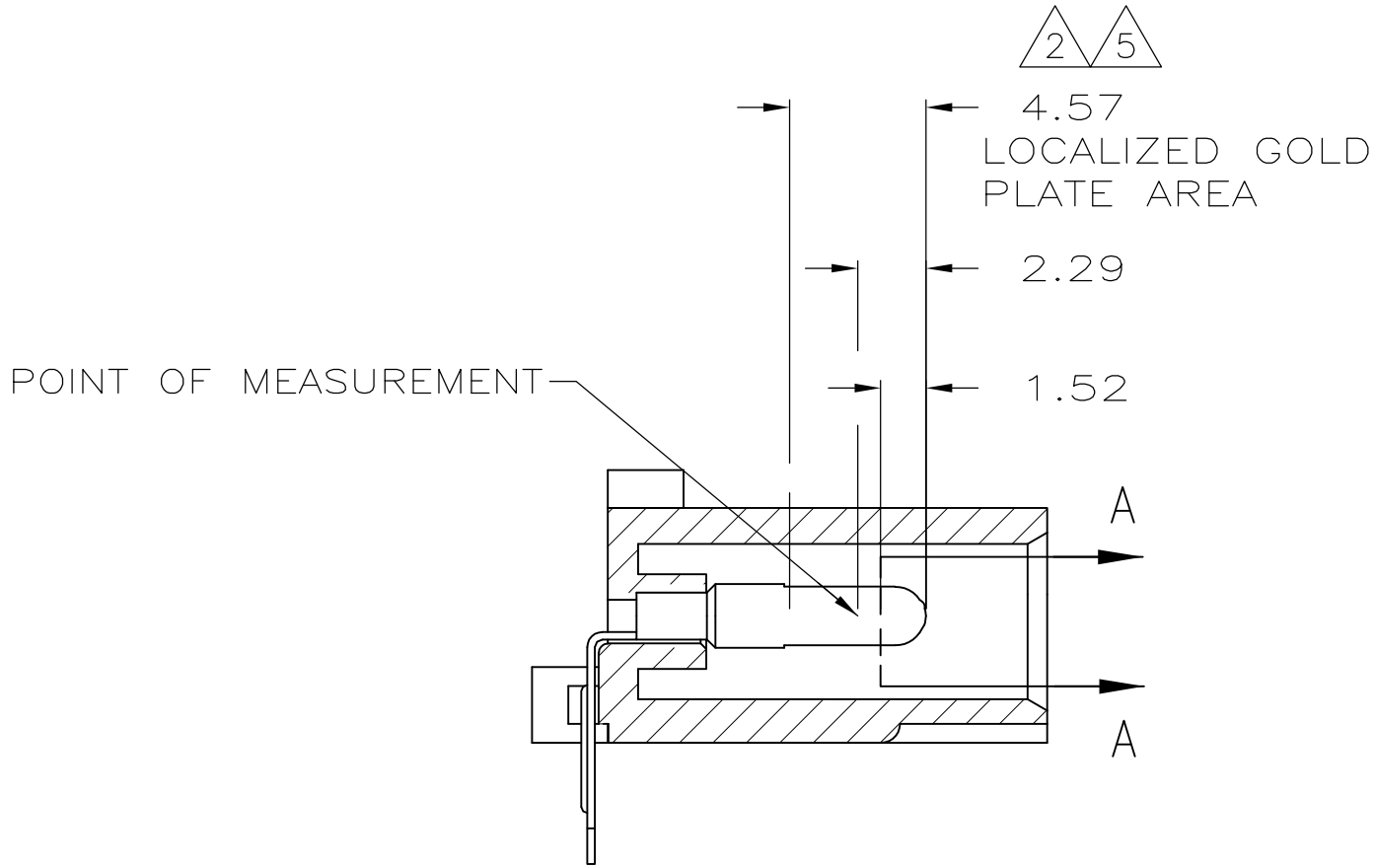
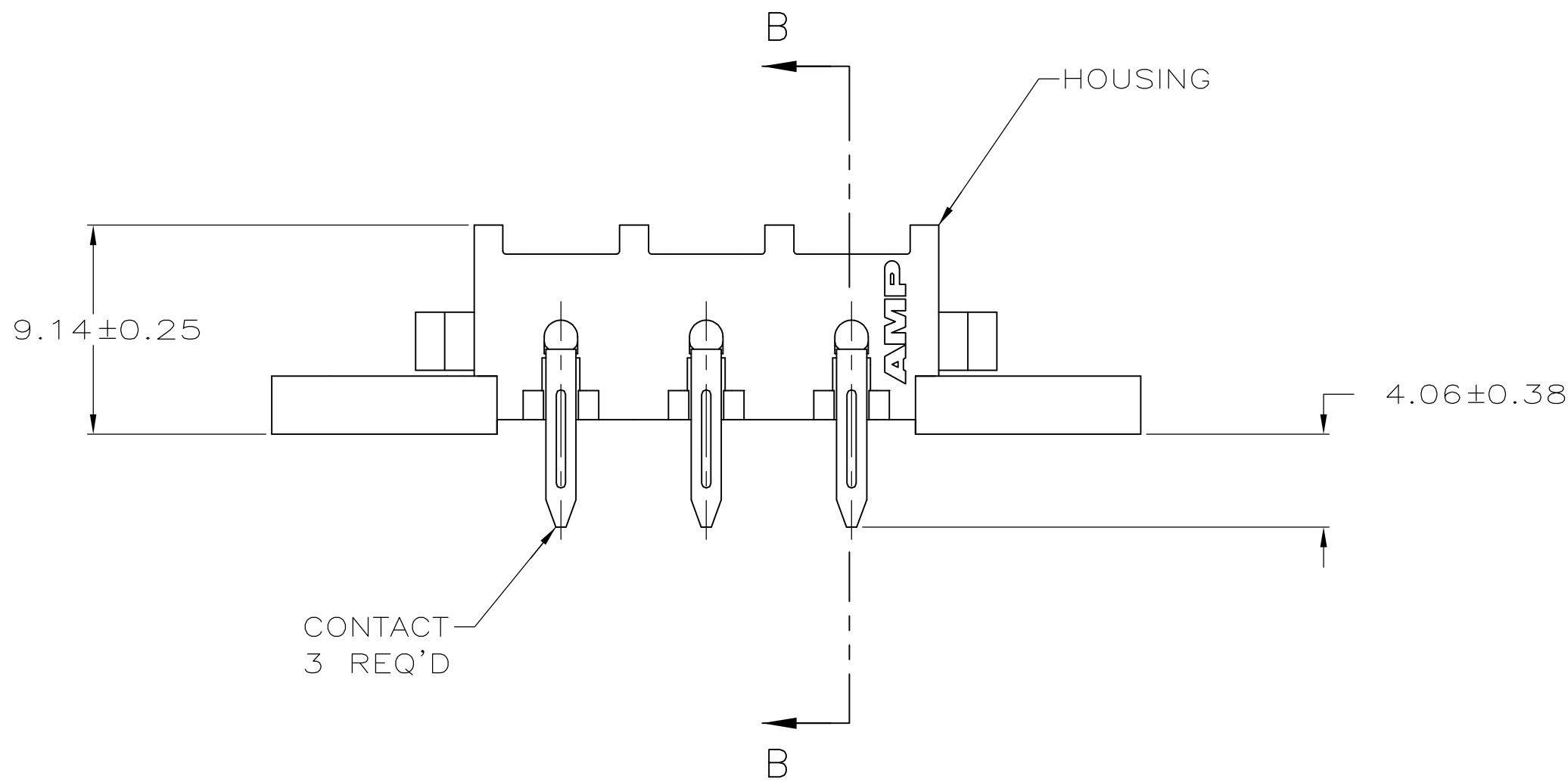


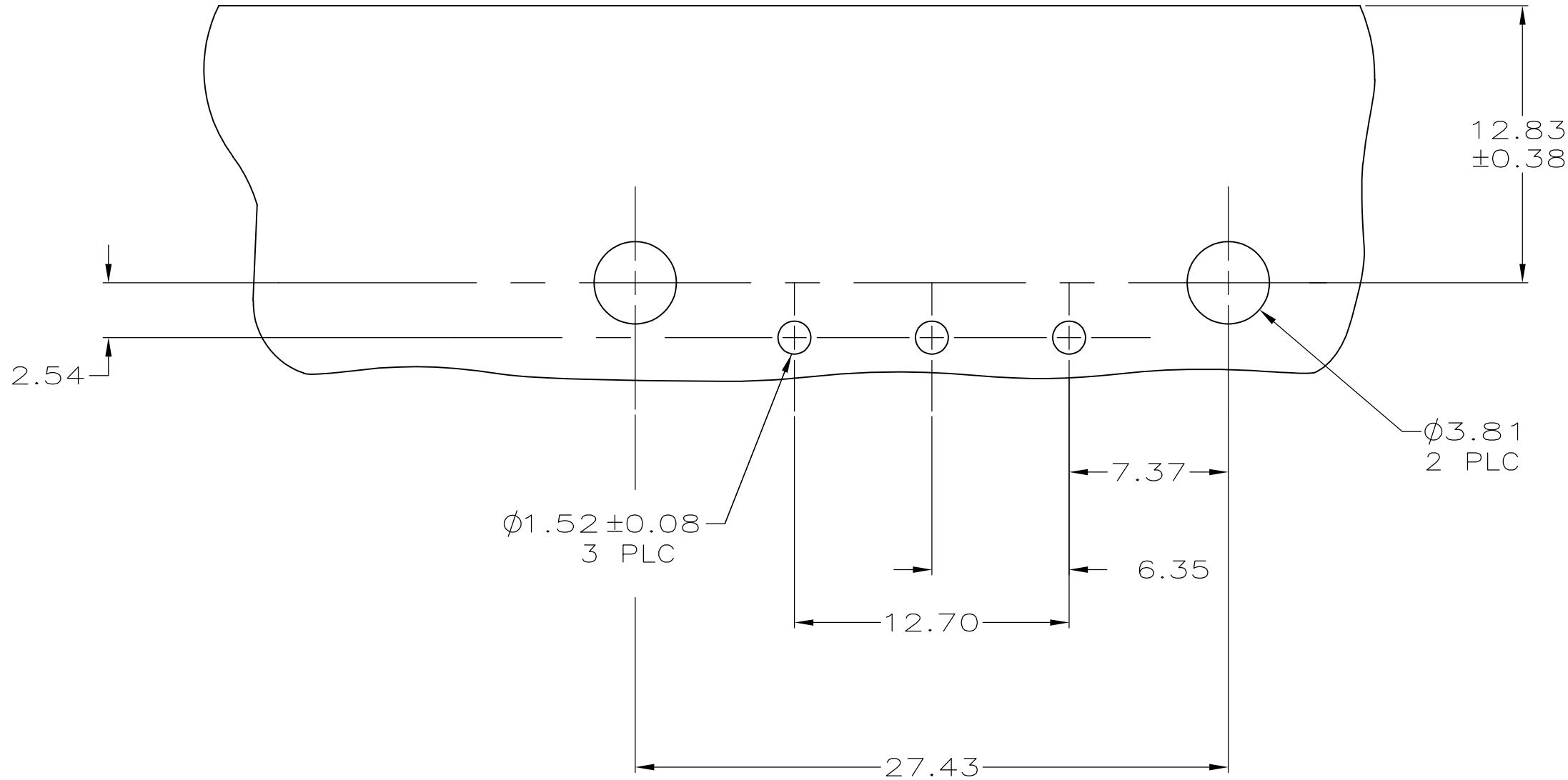
LOC	DIST	REVISIONS				
		REV	DATE	BY	CHK	APP
CM	00	M2	30JAN13	KH		TM



- 1 PARTS COMPLY WITH AMP SOLDERABILITY SPECIFICATION 109-11-5.
- 2 CONTACT IS PLATED OVERALL WITH 0.00127 MIN NICKEL, THEN 0.00076 GOLD OVER CONTACT LENGTH INDICATED AND MATTE TIN-LEAD FINISH ON SOLDER TAIL END.
- 3 OPTIONAL CONSTRUCTION MAY DELETE THIS RIB.
- 4 CIRCUIT IDENTIFICATION CHARACTERS ARE ADJACENT TO THE INDICATED CAVITIES,BUT LOCATION AND ORIENTATION MAY DIFFER FROM PRINT.
- 5 CONTACT IS PLATED OVERALL WITH 0.00127 MIN NICKEL, THEN 0.00076 GOLD OVER CONTACT LENGTH INDICATED AND MATTE TIN FINISH ON SOLDER TAIL END.
- 6 SUPERSEDED BY 3-350943-0



SECTION A-A
SCALE 10:1



RECOMMENDED MOUNTING HOLE PATTERN
FOR 1.57 THICK P.C. BOARD

PH BRZ GOLD, 5	NYLON UL 94V-0	3-350943-0
PH BRZ GOLD, 2	NYLON UL 94V-0	2-350943-0
PH BRZ PRE-TIN	NYLON UL 94V-0	1-350943-0
CONTACT	HOUSING	PART NUMBER

2.29	.090	37.97	1.495
2.24	.088	27.43	1.080
2.11	.083	20.32	.800
1.98	.078	17.27	.680
1.85	.073	12.83	.505
1.57	.062	12.70	.500
1.52	.060	9.14	.360
0.38	.015	7.37	.290
0.25	.010	6.35	.250
0.13	.005	4.57	.180
0.08	.003	4.06	.160
.00127	.000050	3.81	.150
.00076	.000030	2.54	.100
MM	IN	MM	IN
CONVERSION TABLE			

THIS DRAWING IS A CONTROLLED DOCUMENT.		DWN K. WHITAKER CHK S. RIDGILL APVD S. RIDGILL	15APR2005 15APR2005 15APR2005	TE Connectivity	
DIMENSIONS: mm	TOLERANCES UNLESS OTHERWISE SPECIFIED:	0 PLC 1 PLC 2 PLC 3 PLC 4 PLC ANGLES	± - ± - ± 0.13 ± - ± - ± -	NAME	PIN HEADER ASSEMBLY, RIGHT ANGLE MOUNT,3 POSITION, UNIVERSAL MATE-N-LOK(TM)
MATERIAL SEE TABLE	FINISH SEE TABLE	WEIGHT	—	SIZE A1	CAGE CODE 00779
CUSTOMER DRAWING		SCALE	4:1	SHEET	1 OF 1
		REV	M2		

Mouser Electronics

Authorized Distributor

Click to View Pricing, Inventory, Delivery & Lifecycle Information:

[TE Connectivity:](#)

[3-350943-0](#)