

THIS DRAWING IS UNPUBLISHED.

RELEASED FOR PUBLICATION

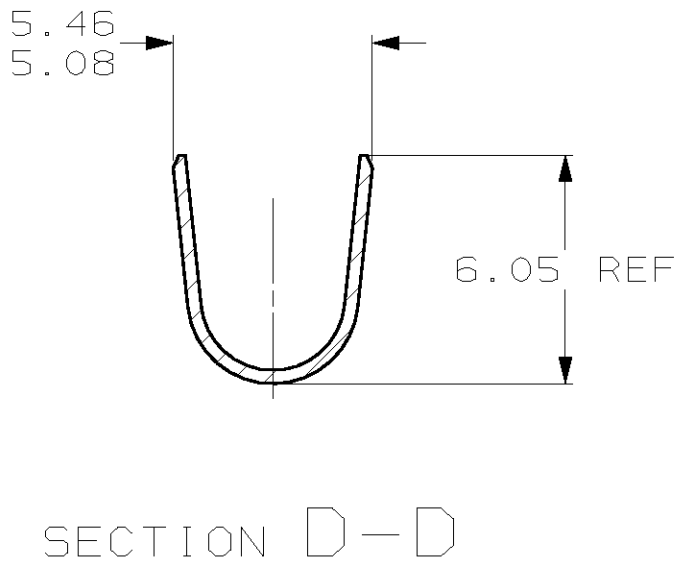
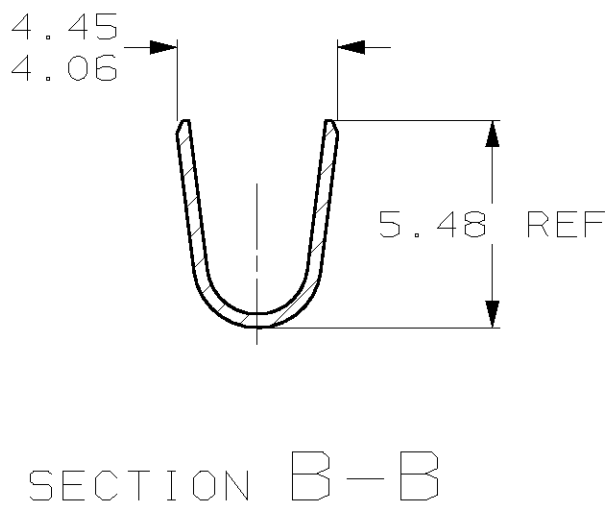
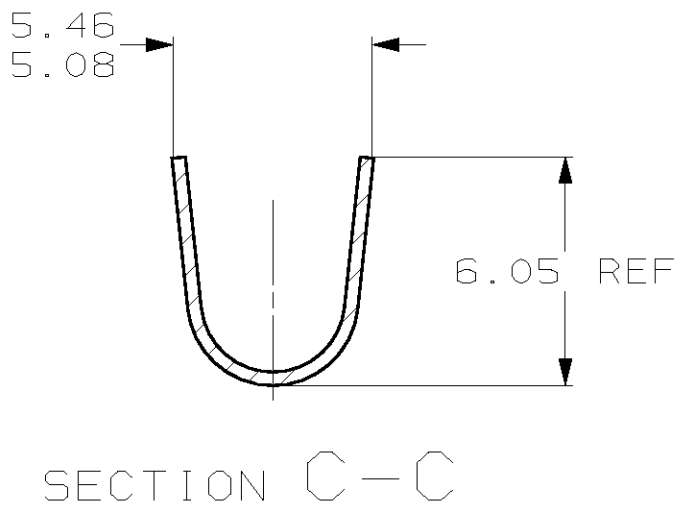
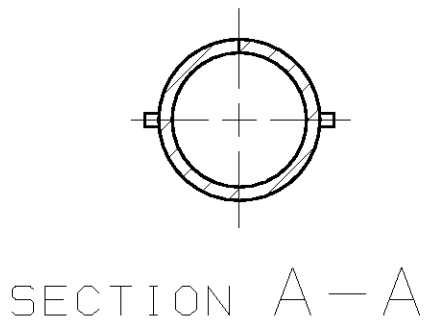
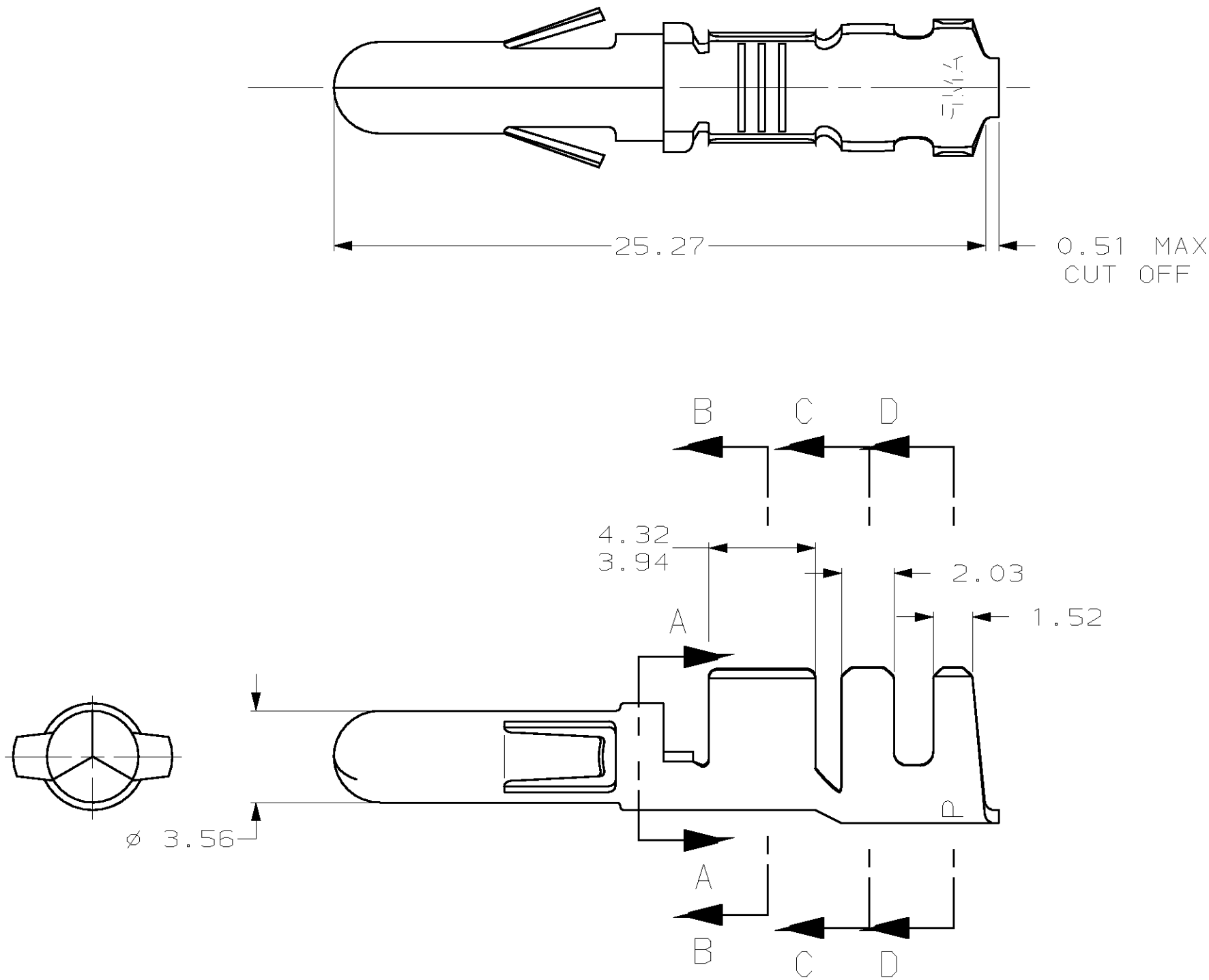
.19

(C) COPYRIGHT 19

BY AMP INCORPORATED. ALL RIGHTS RESERVED.

LOC	DIST	REVISIONS					
CM	53	P	LTR	DESCRIPTION	DATE	DWN	APVD
			C	REV & REDWN PER EC 0G1B-0217-98	29OCT98	TB	R5

1. WIRE RANGE: 2 - 6 mm<sup>2</sup> (14 - 10 AWG)
2. INSULATION RANGE: 2.54 - 4.57



1.52	.060	4.06	.160	5.46	.215	-	-
0.51	.020	3.94	.155	5.08	.200	-	-
0.36	.014	3.56	.140	4.57	.180	25.27	.995
0.35	.014	2.54	.100	4.45	.175	6.05	.238
0.13	.005	2.03	.080	4.32	.170	5.48	.216
MM	IN	MM	IN	MM	IN	MM	IN
CONVERSION TABLE							

METRIC

PRE TIN	0.36 PH BRZ	350391-2
PRE TIN	0.35 BRASS	350391-1
FINISH	MATERIAL	PART NUMBER

THIS DRAWING IS A CONTROLLED DOCUMENT.		DWN T. BECK 29OCT1998	<b>AMP</b> AMP Incorporated Harrisburg, PA 17105-3608			
DIMENSIONS: mm		CHK R. SWING 29OCT1998				
		APVD C. MARTIN 16NOV1998	NAME PIN, LOOSE PIECE, .140 PIN & SOCKET CONNECTOR			
		PRODUCT SPEC	SIZE A2			
MATERIAL SEE TABLE		FINISH SEE TABLE	CAGE CODE 00779			
		WEIGHT -	DRAWING NO C- 350391			
		CUSTOMER DRAWING	RESTRICTED TO -			
		SCALE 5:1	SHEET 1 OF 1			
			REV C			

# Mouser Electronics

Authorized Distributor

Click to View Pricing, Inventory, Delivery & Lifecycle Information:

[TE Connectivity:](#)

[350391-2](#)