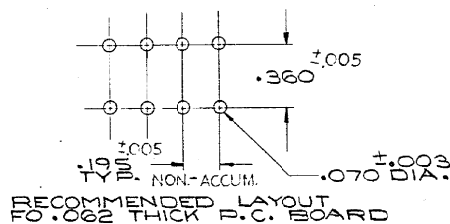
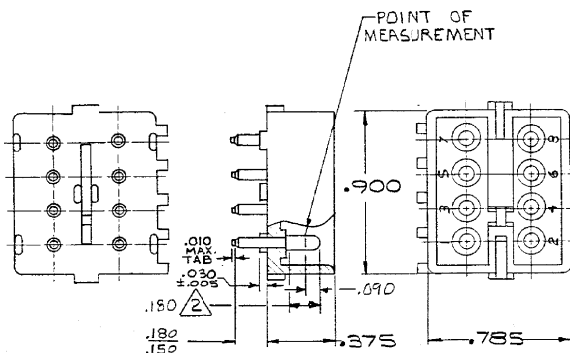


DRAWING MADE IN AMERICAN PROJECTION



1. PARTS COMPLY WITH TE SOLDERABILITY SPEC. NO. 109-11-3

△ CONTACT IS PLATED OVERALL WITH .000050 NICKEL, THEN .000030 GOLD OVER CONTACT LENGTH INDICATED, AND ITIN PLATED ON SOLDER TAIL END.

SUPERSEDED BY
1586518-2

350212-2	NYLON	NATURAL	COPPER ALLOY	GOLD	△
350212-1	NYLON - NATURAL	Copper Alloy - PRE-TIN			
ASSEMBLY NO.	HGS. MATL. - COLOR	PIN MATL. - FINISH			

Models and copy not to be reproduced without written permission of ETE Incorporated.

P2	REVISED PER ECR-10-009130	JB	DZ	19 JUN 2018
P1	REVISED PER ECR-13-008342	AV	RP	13 NOV 2013
P	OBS 1-1 2-1 9-1 PER ECR CM-2706	NG	RS	8 FEB 1978
N	OBS 5-1 6-1 PER CM 2213	PS	RS	7 FEB 1978
LTR	REVISION RECORD	OK	OK	DATE

QWG SIZE	NUMBER	NAME	REMARKS	ITEM NO.
REQUIRED PER ASSEMBLY				
© 1978 BY AMP INCORPORATED. ALL RIGHTS RESERVED. AMP PRODUCTS COVERED BY PATENTS AND/OR PATENTS PENDING.				
MATERIAL AND FINISH			CUSTOMER COPY REFERENCE ONLY	
SEE TABLE			TE Connectivity	
WIRE - RANGE - INSULATION			CLASS	
TOLERANCE EXCEPT AS NOTED			TYPE PIN HEADER	
SCALE			LOC CM B 350212	
NAME 8 CIRCUIT MATE-N-LOK P.C. BOARD HEADER			REV P2	

PRINTED
DIMENSIONS IN INCHES. DO NOT SCALE PRINT.

Mouser Electronics

Authorized Distributor

Click to View Pricing, Inventory, Delivery & Lifecycle Information:

[TE Connectivity:](#)

[350212-1](#)