

4

3

2



1

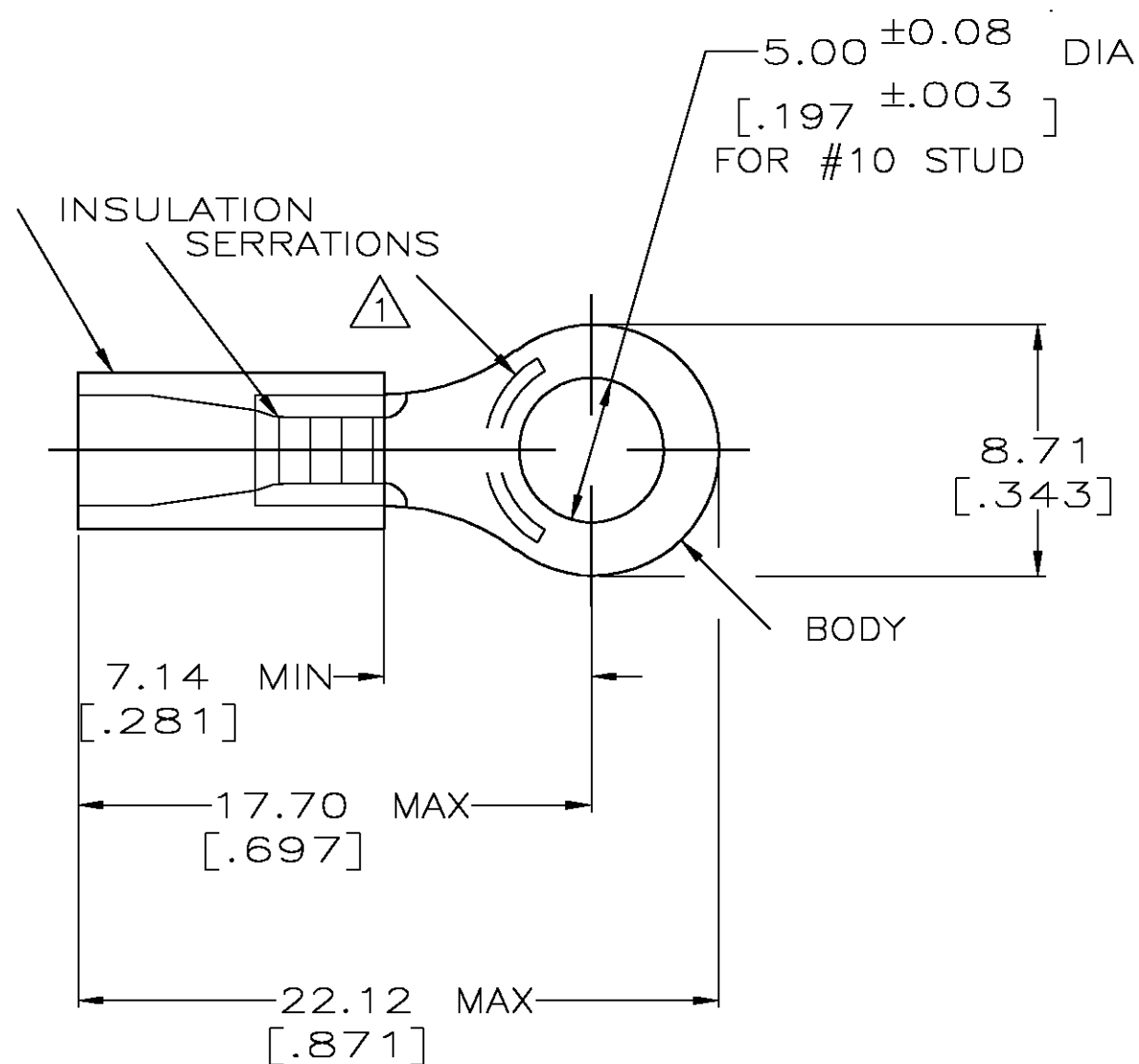
THIS DRAWING IS UNPUBLISHED.

RELEASED FOR PUBLICATION

© COPYRIGHT - BY TYCO ELECTRONICS CORPORATION. ALL RIGHTS RESERVED.

LOC	DIST	REVISIONS					
		P	LTR	DESCRIPTION	DATE	DWN	APVD
G	14		H	REV PER 0G3A-0652-04	18AUG04	JR	TM

<b>AMP</b> WIRE RANGE	 Listed FILE E13288	 LR7189 Certified
16-14 AWG SOLID OR STRANDED	16-14 AWG SOLID OR STRANDED	16-14 AWG SOLID OR STRANDED



STAMP AMP 16-14\* APPROX AS SHOWN

2 WIRE INSULATION DIA: .105-.145

3 TONGUE MATERIAL THK: 0.79 ±0.05 [.031 ±.002]

△ MATERIAL: BODY - CU PER ASTM B152  
SLEEVE - PVC, COLOR - BLUE

100	LOOSE PC,BOX	8-32960-1
5000	ON TAPE, REEL	2-32960-1
-	LOOSE PIECE	32960
QTY	PACKAGE TYPE	PART NO.

AMP INCORPORATED  
CUSTOMER SERVICE SYSTEMSMAX RECOMMENDED OPERATING  
TEMPERATURE:  
105°C [221° F]

THIS DRAWING IS A CONTROLLED DOCUMENT.

DWN DK SCHRUM 09/29/92

CHK RE HERSEY 11/10/92

APVD M BARNABA 11/10/92

PRODUCT SPEC

108-1034

APPLICATION SPEC

NOT AVAILABLE

WEIGHT -

CUSTOMER DRAWING

**tyco**  
**Electronics**

Tyco Electronics Corporation  
Harrisburg, Pa 17105-3608

NAME  
TERMINAL, RING TONGUE, PLASTI-GRIP  
WIRE SIZE: 16-14 AWG

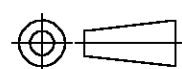
SIZE	CAGE CODE	DRAWING NO	RESTRICTED TO
A3	00779	C-32960	-

SCALE 4:1 SHEET 1 OF 1 REV H

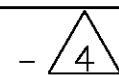
FOR ADDITIONAL  
PRODUCT INFORMATION OR  
COPIES OF DRAWINGS  
AND TECHNICAL DOCUMENTSPRODUCT INFORMATION CENTER  
1-800-522-6752FOR APPLICATION  
TOOLING INFORMATIONTOOLING ASSISTANCE CENTER  
1-800-722-1111

FOR ORDER ENTRY

1-800-526-5142

THIS DRAWING IS A CONTROLLED DOCUMENT FOR  
AMP INCORPORATED. IT IS SUBJECT TO CHANGE  
AND THE CONTROLLING ENGINEERING ORGANIZATION  
SHOULD BE CONTACTED FOR THE LATEST REVISION.VOLTAGE RATING:  
N/ACIRCULAR MIL AREA:  
1.04-2.62mm² [2,050-5,180]  
SOLID OR STRANDEDDIMENSIONS:  
MM [INCHES]

MATERIAL

TOLERANCES UNLESS  
OTHERWISE SPECIFIED:

0 PLC	± -
1 PLC	± -
2 PLC	± 0.20 [.008]
3 PLC	± -
4 PLC	± -
ANGLES	± -

FINISH

TIN PER ASTM B545

# Mouser Electronics

Authorized Distributor

Click to View Pricing, Inventory, Delivery & Lifecycle Information:

[TE Connectivity:](#)

[32960](#)