

THIS DRAWING IS UNPUBLISHED.

RELEASED FOR PUBLICATION

,19 .

© COPYRIGHT 19

BY AMP INCORPORATED. ALL INTERNATIONAL RIGHTS RESERVED.

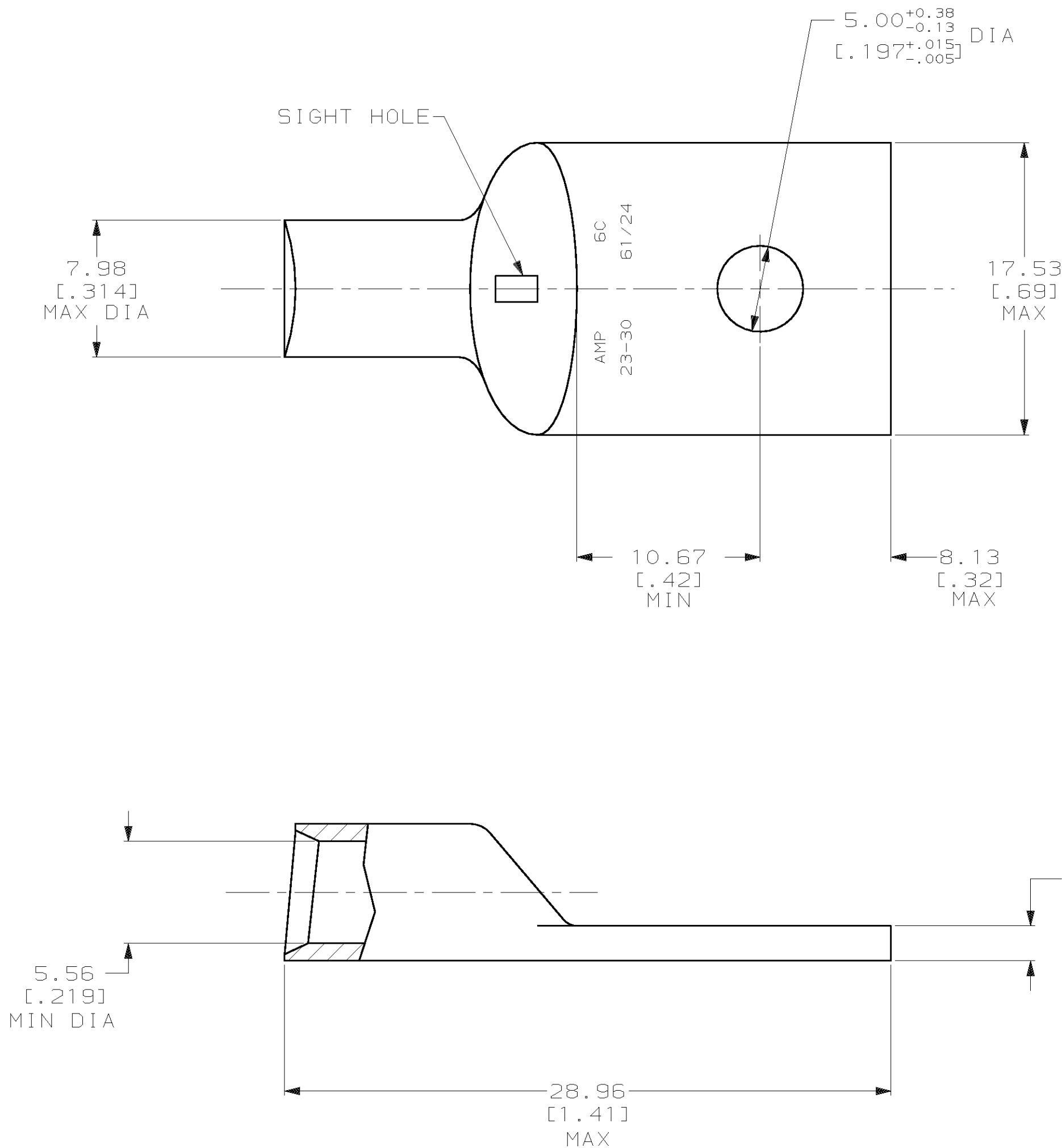
LOC	DIST	P	F	REVISIONS				
				ZONE	LTR	DESCRIPTION	DATE	APPD
G	86				T	REV / 0G10-0059-99	26APR99	ME/TM

D

C

B

A



- 1 CIRCULAR MIL AREA RANGE: 20,800-33,100 CM
- 2 TIN PL 0.00381[.000150] MIN THK PER ASTM B 545

328141

B

A

328141							
PART NO							
DO NOT SCALE PRINT. UNLESS SPECIFIED DIMENSIONS IN mm [INCHES] TOLERANCES ON : 2 PLC DEC ± 0.51[.020] 3 PLC DEC ± - ANGLES ± - MATERIAL ANNEALED COPPER ASTM B-152 FINISH △				DR 03/09/90 DK SCHRUM CHK 19JAN95 MS FEHER APPD 19JAN95 WJ VOCKROTH APPD 19JAN95 TL SHUTTER PRODUCT SPEC 108-30200 APPLICATION SPEC - WEIGHT .016 LB			
				AMP INCORPORATED Harrisburg, Pa. 17105 NAME TERMINAL, AMPOWER™, WIRE SIZE: 6 AWG SIZE C CAGE CODE 00779 DRAWING NO 328141 SCALE 4:1 SHEET 1 OF 1			



Mouser Electronics

Authorized Distributor

Click to View Pricing, Inventory, Delivery & Lifecycle Information:

[TE Connectivity:](#)

[328141](#)