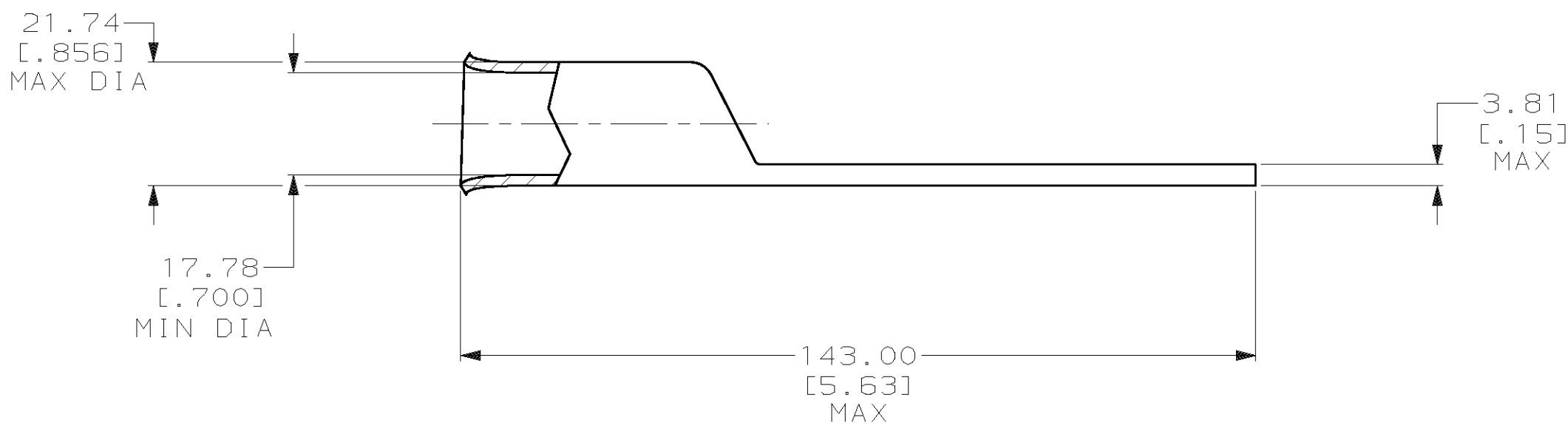
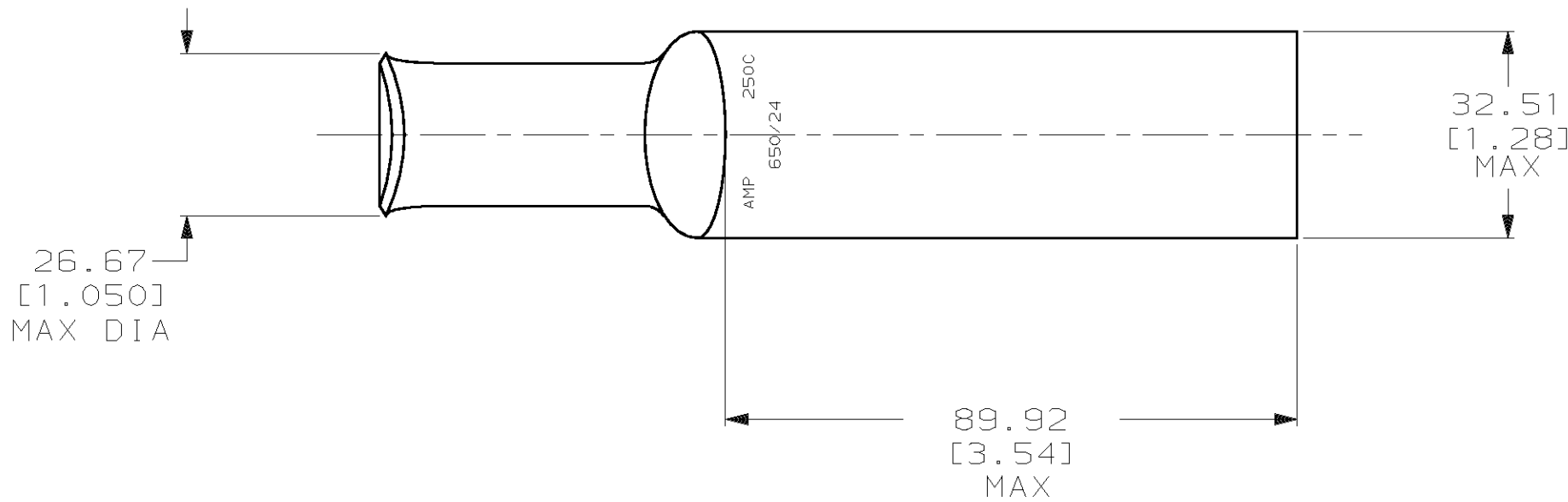


THIS DRAWING IS UNPUBLISHED. RELEASED FOR PUBLICATION ,19 .  
© COPYRIGHT 19 BY AMP INCORPORATED. ALL INTERNATIONAL RIGHTS RESERVED.

LOC	DIST	P	F	REVISIONS				
				ZONE	LTR	DESCRIPTION	DATE	APPD
G	86				D	REV PER 0G3A-0561-01	080CT02	JR/MS

1 CIRCULAR MIL RANGE: 231-275 MCM  
2 TIN PL 0.00381[.000150] MIN THK PER MIL-T-10727



325719

325719  
PART NO

DO NOT SCALE PRINT.  
UNLESS SPECIFIED  
DIMENSIONS IN mm [INCHES]  
TOLERANCES ON :  
2 PLC DEC ± 0.51[.020]  
3 PLC DEC ± -  
ANGLES ± -

MATERIAL  
ANNEALED COPPER  
ASTM B-75

FINISH



DR 03/09/90  
DK SCHRUM  
CHK 20JAN95  
MS FEHER

APPD 20JAN95  
WJ VOCKROTH

APPD 20JAN95  
TL SHUTTER  
PRODUCT SPEC  
108-30200

APPLICATION SPEC  
-

WEIGHT .289 LB

AMP AMP INCORPORATED  
Harrisburg, Pa. 17105

NAME  
TERMINAL, AMPPOWER™  
WIRE SIZE: 250 MCM

SIZE C	CAGE CODE 00779	DRAWING NO 325719
SCALE 1:1	SHEET 1 OF 1	



# Mouser Electronics

Authorized Distributor

Click to View Pricing, Inventory, Delivery & Lifecycle Information:

[TE Connectivity:](#)

[325719](#)