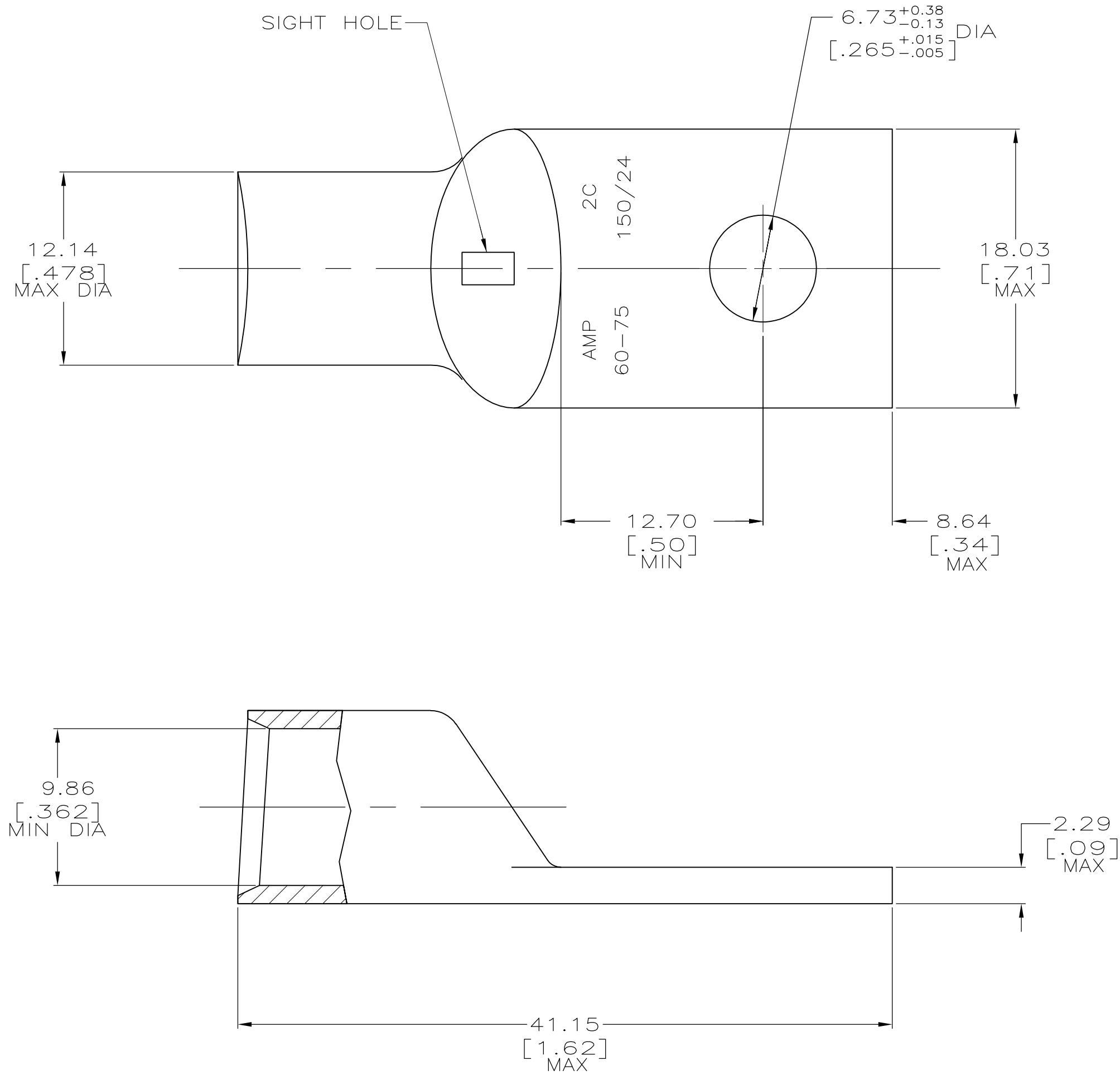


LOC	DIST	REVISIONS				
G	86	P	LTR	DESCRIPTION	DATE	OWN
			V2	REVISED PER ECO-11-004917	11MAR11	RK
						APVD
						HMR



- 1 CIRCULAR MIL AREA RANGE: 52,600-83,700 CM
2 TIN PL 0.00381[.000150] MIN THK PER MIL-T-10727

THIS DRAWING IS A CONTROLLED DOCUMENT.		DWN DK SCHRUM 04/05/90	TE Connectivity	
		CHK MS FEHER 18JAN95		
DIMENSIONS: mm[INCHES]		APVD TL SHUTTER 18JAN95	NAME	
		PRODUCT SPEC 108-30200	TERMINAL, AMPPOWER, WIRE SIZE: 2 AWG	
		APPLICATION SPEC		
MATERIAL ANNEALED COPPER ASTM B-75		WEIGHT .026 LB	SIZE A2	CAGE CODE 00779
FINISH 2		CUSTOMER DRAWING	DRAWING NO. C-325201	RESTRICTED TO
		SCALE 4:1	SHEET 1 of 1	REV V2

Mouser Electronics

Authorized Distributor

Click to View Pricing, Inventory, Delivery & Lifecycle Information:

[TE Connectivity:](#)

[325201](#)