

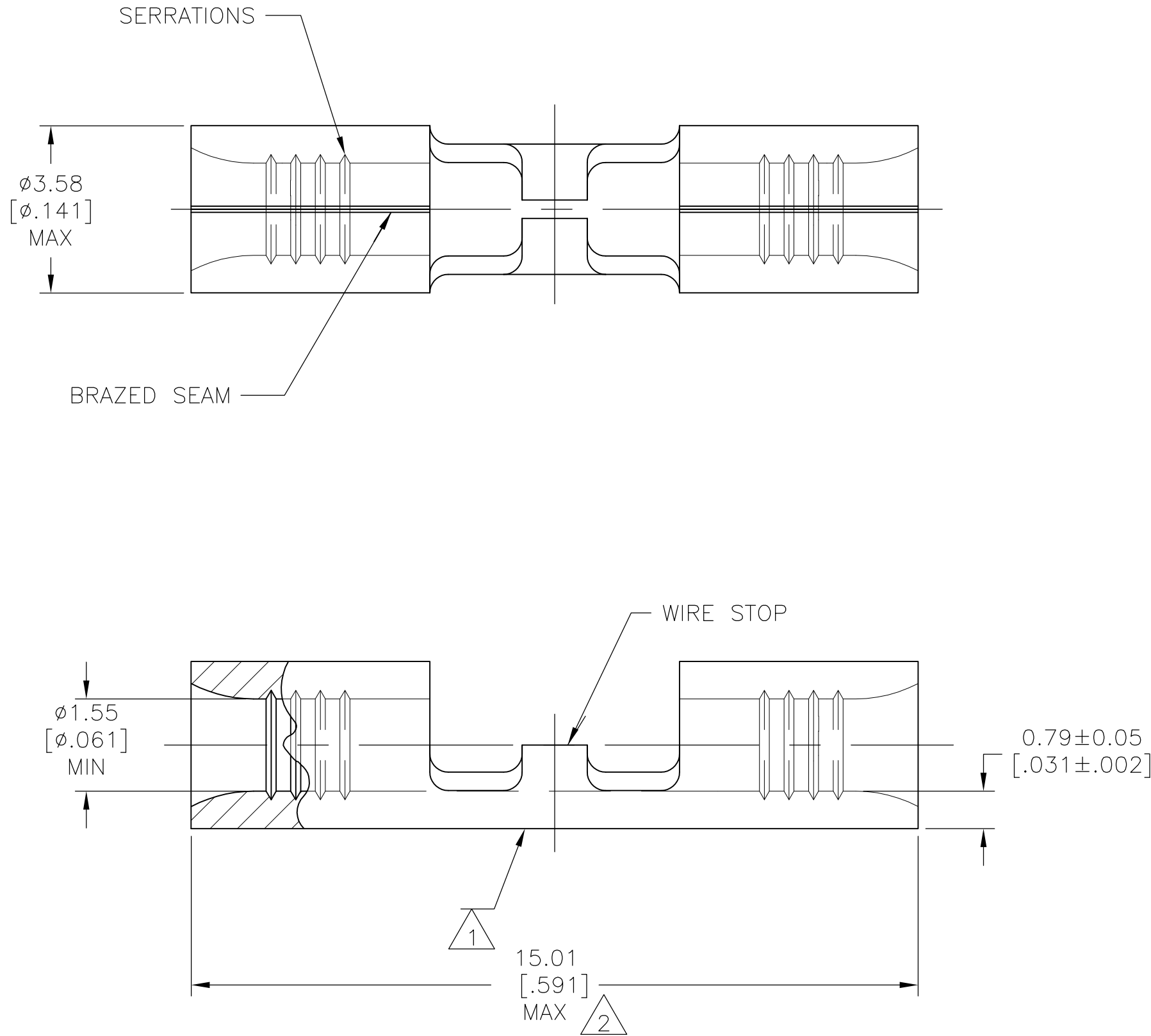
LOC	DIST	REVISIONS				
G	14	P	LTR	DESCRIPTION	DATE	DWN
		L		REVISED PER ECO-10-012870	27APR11	DR

D

C

B

A



**AMP**  
WIRE RANGE

22-16 AWG  
SOLID OR STRANDED

- 1
- STAMP AMP 22-18\* APPROX AS SHOWN 22-16 SPLICES ARE STAMPED 22-18 IN CORDANCE WITH MILITARY SPEC SAE AS7928 COMMERCIAL WIRE RANGE IS 22-16

2

3

4





5

6

7

AMP INCORPORATED CUSTOMER SERVICE SYSTEMS		MAX RECOMMENDED OPERATING TEMPERATURE: SEE TABLE
FOR ADDITIONAL PRODUCT INFORMATION OR COPIES OF DRAWINGS AND TECHNICAL DOCUMENTS	PRODUCT INFORMATION CENTER 1-800-522-6752	VOLTAGE RATING: NOT APPLICABLE
FOR APPLICATION TOOLING INFORMATION	TOOLING ASSISTANCE CENTER 1-800-722-1111	WIRE CROSS SECTIONAL AREA RANGE: 0.26-1.65mm <sup>2</sup> [509-3,260] CIR MILS SOLID OR STRANDED
FOR ORDER ENTRY	1-800-526-5142	THIS DRAWING IS A CONTROLLED DOCUMENT FOR AMP INCORPORATED. IT IS SUBJECT TO CHANGE AND THE CONTROLLING ENGINEERING ORGANIZATION SHOULD BE CONTACTED FOR THE LATEST REVISION.

7 6 7 6	260° C	1000	LOOSE PIECE	5	2-321801-6
	170° C	5000	2-321801-3 ON TAPE	4	2-321801-4
7 6	170° C	1000	LOOSE PIECE	4	2-321801-3
	MAX TEMP	QUANTITY	PACKAGE TYPE	FINISH	PART NO

THIS DRAWING IS A CONTROLLED DOCUMENT.		DWN TA BRINKMAN 4-13-93		 TE Connectivity			
DIMENSIONS: mm [INCHES]		CHK DA PATTERSON 4-13-93					
	TOLERANCES UNLESS OTHERWISE SPECIFIED:		APVD DE MILLER 4-13-93		NAME		
	0 PLC ± -		PRODUCT SPEC				
	1 PLC ± -		—				
	2 PLC ± -		APPLICATION SPEC				
	3 PLC ± -		—		SIZE		
	4 PLC ± -		—			CAGE CODE	
	ANGLES ± -		—				DRAWING NO
	FINISH		WEIGHT —				
		CUSTOMER DRAWING		SCALE			
					SHEET		
						1 of 1	
							REV
				L			

# Mouser Electronics

Authorized Distributor

Click to View Pricing, Inventory, Delivery & Lifecycle Information:

[TE Connectivity:](#)

[2-321801-3](#)