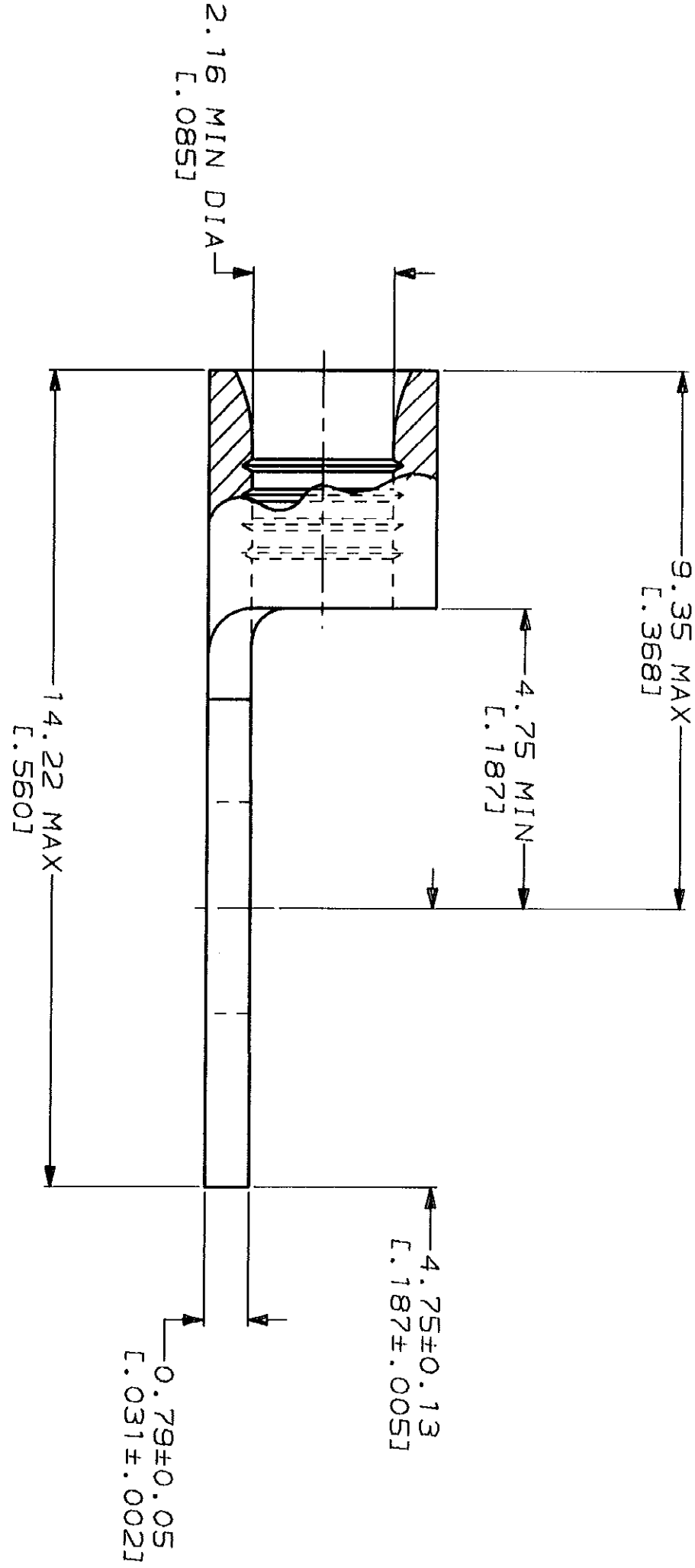
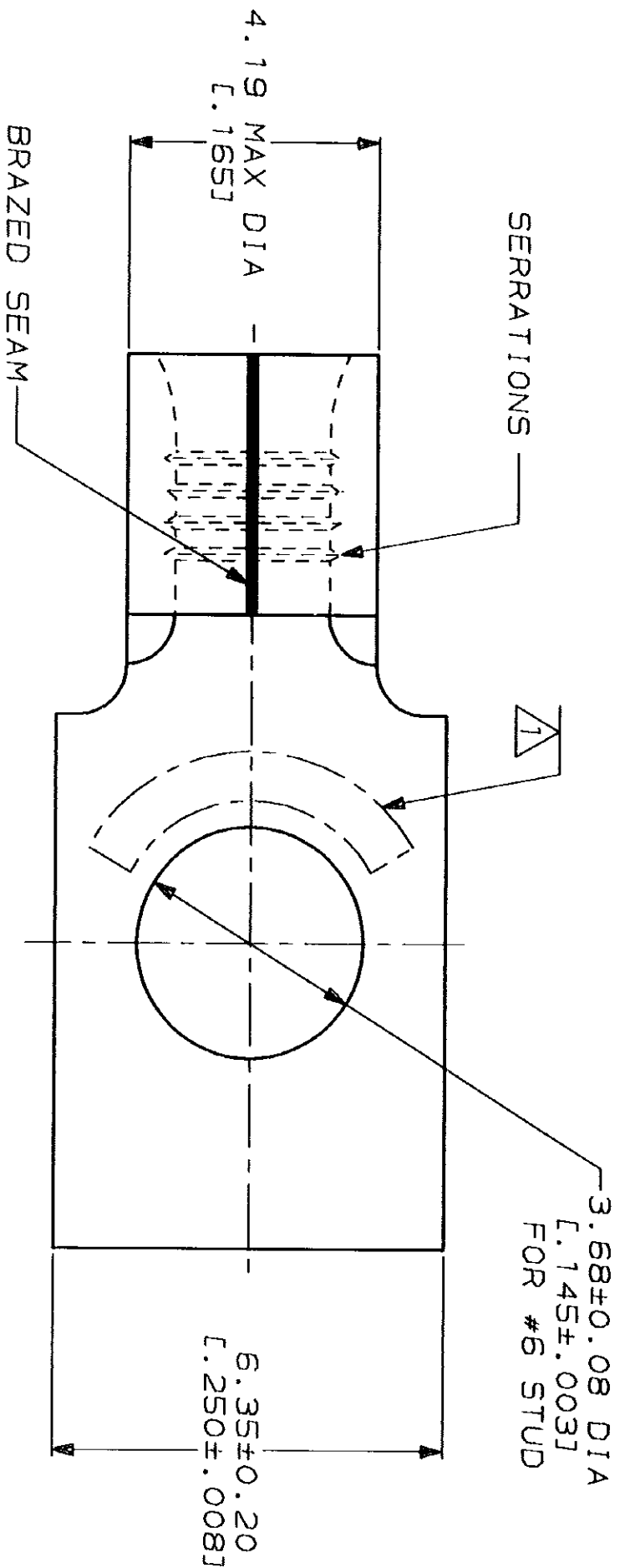


LOC		DIST		ZONE		LTR		REV		REVISIONS		DATE		APPRO	
G	1	4		P	F			C	REV 8	REDRAWN PER 0720-0040-93		3-26-93		18	DAP


METRIC
DIMENSIONS LISTED IN mm [INCHES]

AMP WIRE RANGE		UL E13288 Listed	
16-14 AWG		16-14 AWG	
SOLID OR STRANDED		SOLID OR STRANDED	
LR7189 Certified		MILITARY P/N AND CLASS	
16-14 AWG		NOT APPLICABLE	
SOLID OR STRANDED			

1 STAMP AMP 16-14* APPROX AS SHOWN



AMP INCORPORATED CUSTOMER SERVICE SYSTEMS		MAX RECOMMENDED OPERATING TEMPERATURE: 170°C MAX	
FOR ADDITIONAL PRODUCT INFORMATION OR COPIES OF DRAWINGS AND TECHNICAL DOCUMENTS		VOLTAGE RATING: NOT APPLICABLE	
FOR APPLICATION TOOLING INFORMATION		WIRE CROSS SECTIONAL AREA RANGE: 1.04-2.62mm² [2.050-5.180] CIR MILS SOLID OR STRANDED	
FOR ORDER ENTRY		THIS DRAWING IS A CONTROLLED DOCUMENT FOR AMP INCORPORATED. IT IS SUBJECT TO CHANGE AND THE CONTROLLING ENGINEERING ORGANIZATION SHOULD BE CONTACTED FOR THE LATEST REVISION.	

DO NOT SCALE PRINT. UNLESS SPECIFIED DIMENSIONS IN mm [INCHES] TOLERANCES ON : 2 PLC DEC ± - 3 PLC DEC ± - ANGLES ± -		DR 3-26-93 TA BRINKMAN		<div></div> <div>AMP Incorporated Harrisburg, PA 17105-3608</div>	
MATERIAL COPPER PER ASTM B-152 ANNEALED		CHK 3-26-93 DA PATTERSON			
FINISH TIN PLATE 0.00254[.000100] MIN THK PER MIL-T-10727		APPD 3-26-93 DE MILLER			
APPLICATION SPEC		APPD 3-26-93 JL MECKLEY			
PRODUCT SPEC				TERMINAL, RECTANGULAR TONGUE, SOLISTRAND™	
-					
SIZE		CAGE CODE	DRAWING NO		
C		00779	C-320815		
SCALE		10:1	SHEET	1 OF 1	

TERMINAL, RECTANGULAR
TONGUE, SOLISTRAND™

Mouser Electronics

Authorized Distributor

Click to View Pricing, Inventory, Delivery & Lifecycle Information:

[TE Connectivity:](#)

[320815](#)