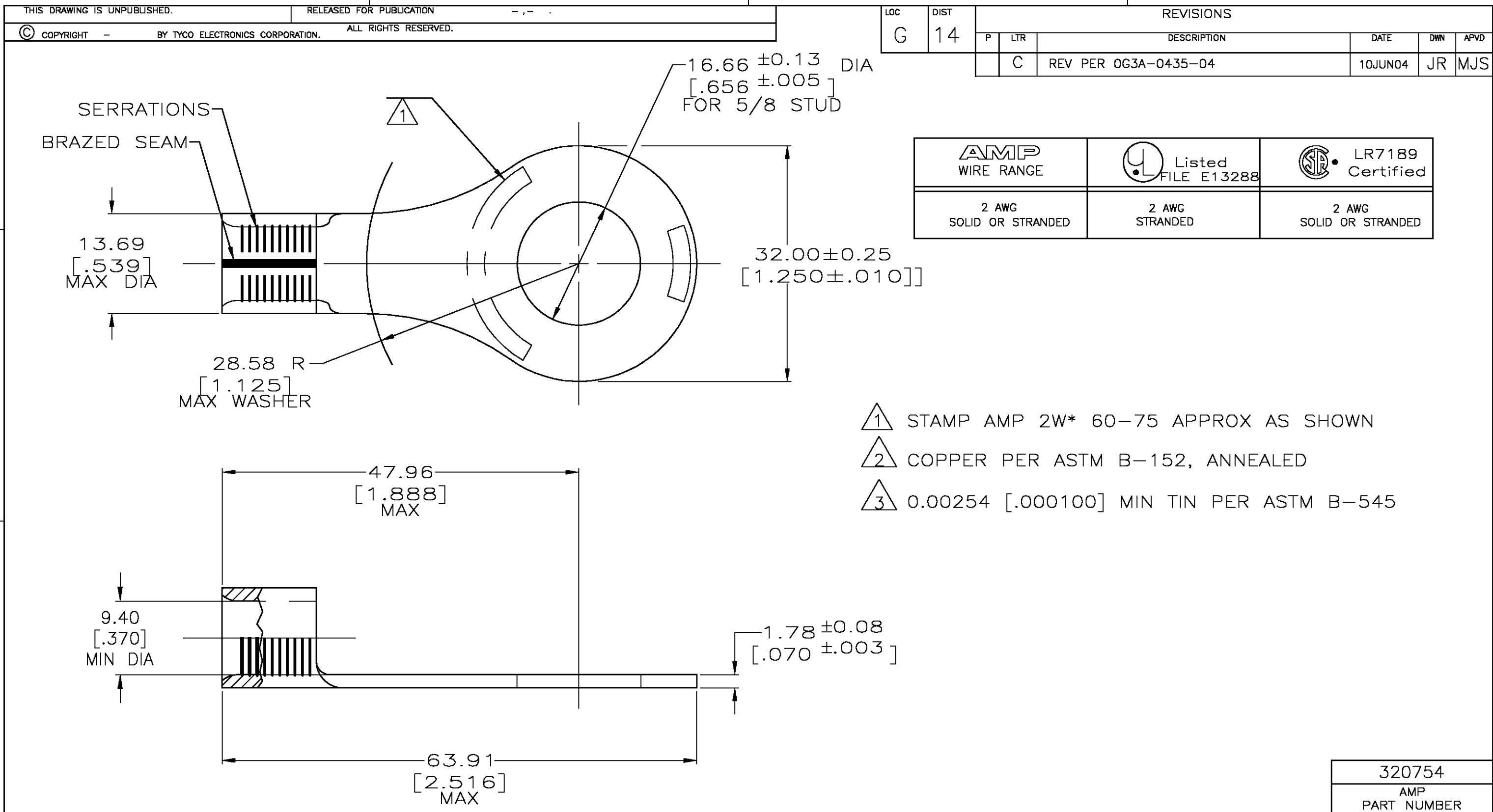


4

3

2

1



# AMP INCORPORATED CUSTOMER SERVICE SYSTEMS

FOR ADDITIONAL PRODUCT  
INFORMATION OR COPIES  
OF DRAWINGS AND  
TECHNICAL DOCUMENTS

PRODUCT INFORMATION CENTER  
1-800-522-6752

FOR APPLICATION  
TOOLING INFORMATION

TOOLING ASSISTANCE CENTER  
1-800-722-1111

FOR ORDER ENTRY

1-800-526-5142

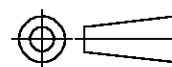
RECOMMENDED OPERATING TEMPERATURE:  
170° C MAX

VOLTAGE RATING:  
NOT APPLICABLE

WIRE CROSS SECTIONAL AREA RANGE:  
26.7-42.4mm<sup>2</sup> [52,600-83,700] CIR MILS  
STRANDED

THIS DRAWING IS A CONTROLLED DOCUMENT.

DIMENSIONS:  
mm [INCHES]



MATERIAL

COPPER

TOLERANCES UNLESS  
OTHERWISE SPECIFIED:

0 PLC ± -  
1 PLC ± -  
2 PLC ± 0.20 [.008]  
3 PLC ± -  
4 PLC ± -  
ANGLES ± -  
FINISH

TIN PLATE

DWN 21JUL97

DK SCHRUM

CHK 21JUL97

MJ SPICER

APVD 21JUL97

JL MECKLEY

PRODUCT SPEC

APPLICATION SPEC

WEIGHT

CUSTOMER DRAWING

**tyco**  
**Electronics**

Tyco Electronics Corporation  
Harrisburg, Pa 17105-3608

NAME  
TERMINAL, RING TONGUE,  
SOLISTRAND

SIZE CAGE CODE DRAWING NO RESTRICTED TO  
A3 00779 C-320754

SCALE 2:1 SHEET 1 OF 1 REV C

# Mouser Electronics

Authorized Distributor

Click to View Pricing, Inventory, Delivery & Lifecycle Information:

[TE Connectivity:](#)

[320754](#)