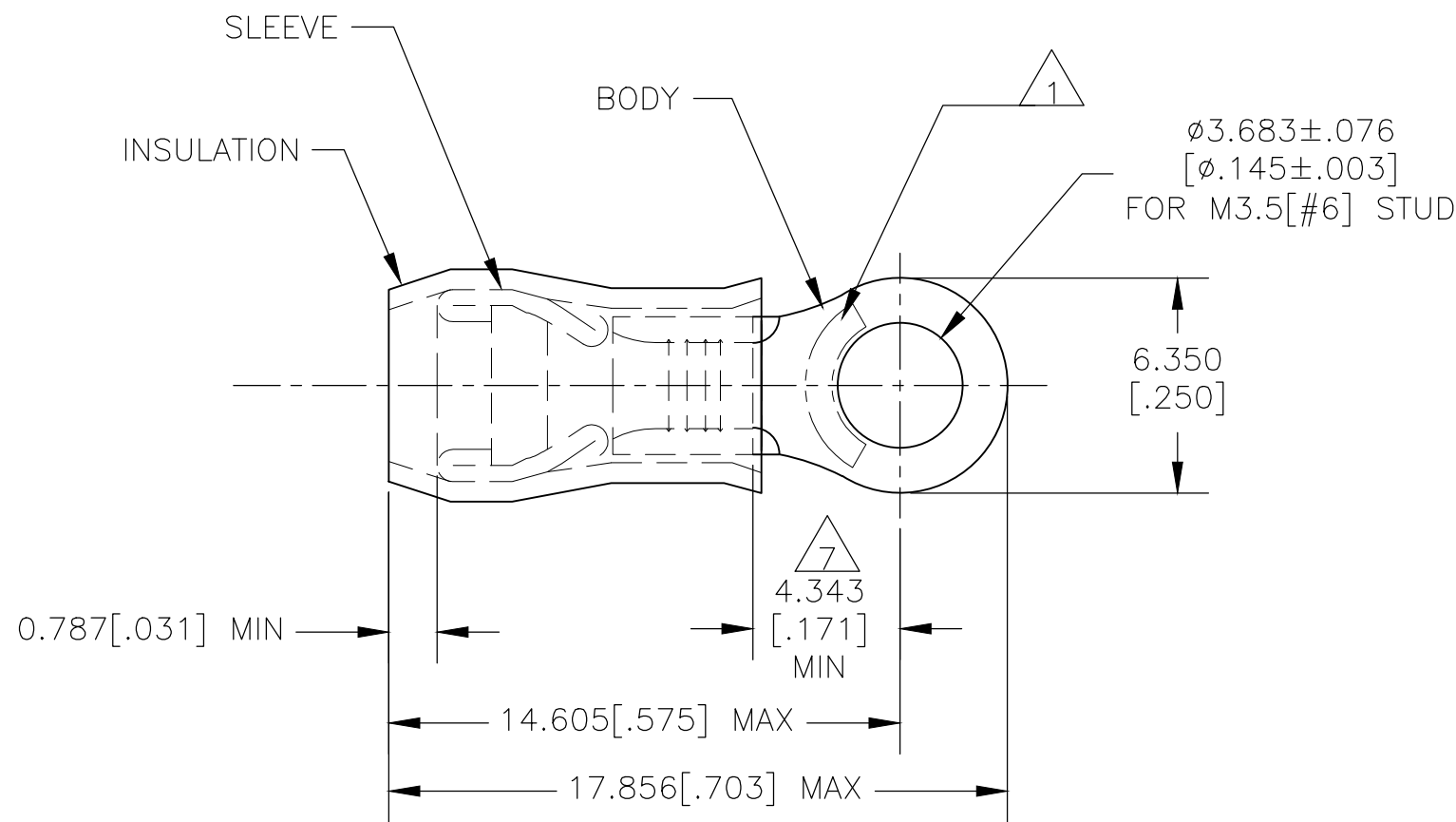
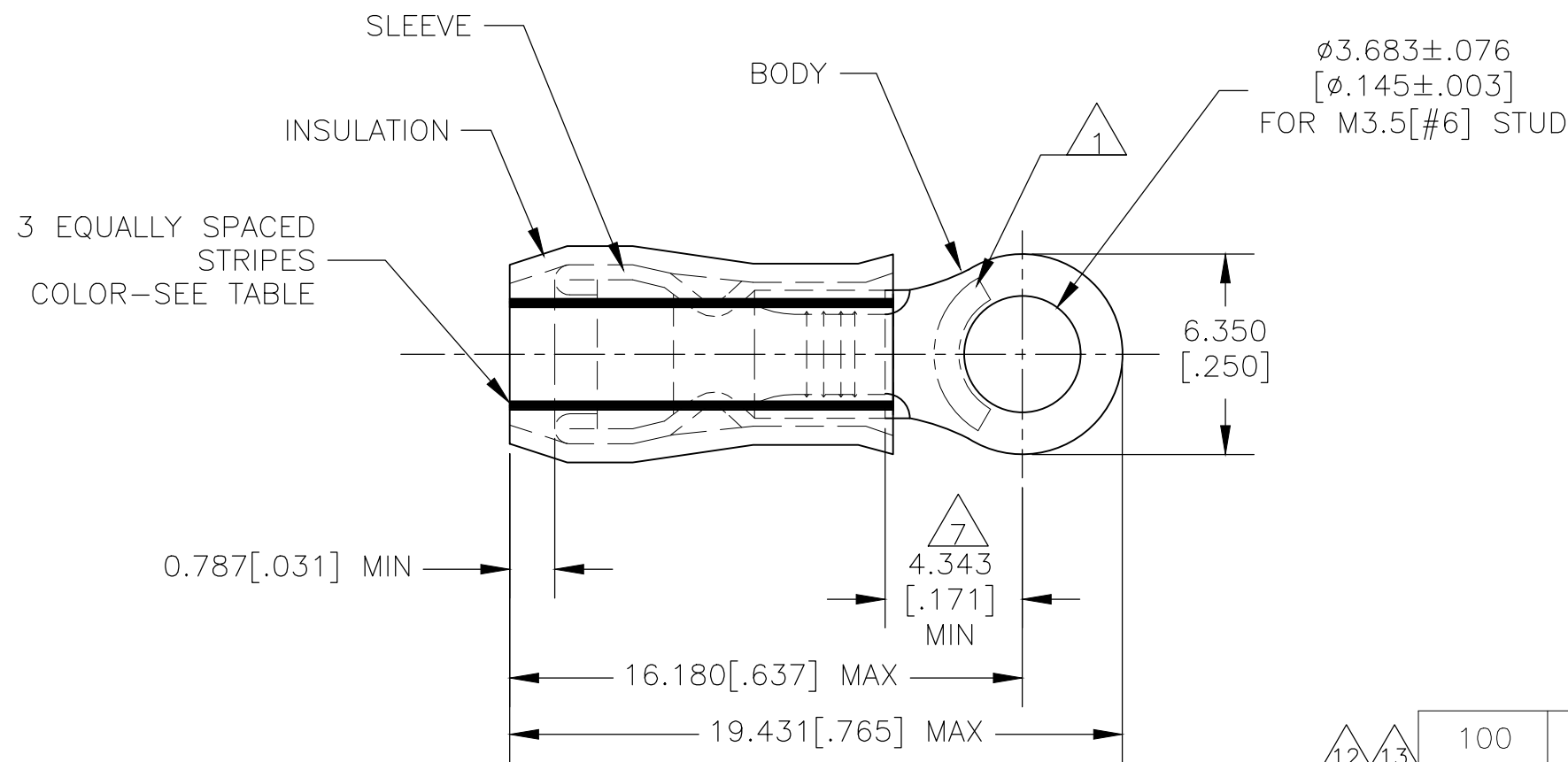


LOC	DIST	REVISIONS					
		P	LTR	DESCRIPTION	DATE	DWN	APVD
G	14		P1	REVISED PER ECO-19-007720	21MAY2020	KR	DR



STYLE A



STYLE B  
INSULATION RESTRICTING

<b>AMP</b> WIRE RANGE	E13288 Listed	LR7189 Certified
16-14 AWG SOLID OR STRANDED IR: STRANDED	16-14 AWG STRANDED	WIRE SIZE PER TABLE SOLID OR STRANDED IR: STRANDED

- 1 STAMP "AMP - SEE TABLE" APPROX AS SHOWN.
- 2 WIRE INSULATION DIA: SEE TABLE.
- 3 BODY MATERIAL THK: 0.787[.031]±0.051[.002].
- 4 BODY: TIN PLATE 0.00254[.000100] MIN EXT THK PER ASTM B545.
- 5 SLEEVE: TIN PLATE 0.00254[.000100] MIN EXT THK PER ASTM B545.
- 6 BODY & SLEEVE- CU PER ASTM B152  
INSULATION - NYLON PER ASTM D4066
- 7 APPLIES FROM EDGE OF METAL WIRE BARREL TO CENTER OF STUD HOLE.
- 8 MEETS MS25036-106, CLASS 1 & 2.
- 9 MEETS MS25036-106, CLASS 2.
- 10 MEETS M7928/1-39, CLASS 1 & 2.
- 11 MEETS M7928/1-48, CLASS 1 & 2.
- 12 UL LISTED
- 13 CSA CERTIFIED

		100	LOOSE PIECE, BOX	16-14*	2.667[.105]-3.810[.150]	16-14	--	A			8-320561-1
		500	LOOSE PIECE	14*	1.981[.078]-3.302[.130]	14	GREEN	B			
		500	LOOSE PIECE	16*	1.600[.063]-3.302[.130]	16	BLUE	B			
		5000	320561 ON TAPE	16-14*	2.667[.105]-3.810[.150]	16-14	--	A			
		500	LOOSE PIECE	16-14*	2.667[.105]-3.810[.150]	16-14	--	A			
		QTY	PACKAGE TYPE	STAMPING	WIRE INSUL DIA	WIRE SIZE	STRIPE COLOR	STYLE			PART NO

CUSTOMER SERVICE SYSTEMS			MAX RECOMMENDED OPERATING TEMPERATURE:  105°C[221°F] MAX		THIS DRAWING IS A CONTROLLED DOCUMENT.		DWN JR RUTH 13JAN10		TE Connectivity							
FOR ADDITIONAL PRODUCT INFORMATION OR COPIES OF DRAWINGS AND TECHNICAL DOCUMENTS		PRODUCT INFORMATION CENTER  1-800-522-6752		VOLTAGE RATING:  300 VOLT MAX		DIMENSIONS:  mm [INCHES]		TOLERANCES UNLESS OTHERWISE SPECIFIED:  0 PLC ± - 1 PLC ± - 2 PLC ± - 3 PLC ± 0.127[.005] 4 PLC ± - ANGLES ± ±		CHK T MICHELUCCI 13JAN10		NAME				
FOR APPLICATION		TOOLING ASSISTANCE CENTER  1-800-722-1111		CIRCULAR MIL AREA:  1.02-2.62mm² [2,050-5,180] STRANDED OR SOLID				APVD T MICHELUCCI 13JAN10		PRODUCT SPEC  UL 486 A-B Δ2		TERMINAL, RING TONGUE, PIDG, WIRE SIZE: 16-14 AWG, PIDG IR: 16 & 14 AWG				
TOOLING INFORMATION		1-800-722-1111				MATERIAL  6		FINISH  SEE TABLE INSULATION: COLOR BLUE		APPLICATION SPEC  114-2157		SIZE A2		CAGE CODE 00779	DRAWING NO C-320561	RESTRICTED TO -
FOR ORDER ENTRY		1-800-526-5142		THIS DRAWING IS A CONTROLLED DOCUMENT FOR AMP INCORPORATED. IT IS SUBJECT TO CHANGE AND THE CONTROLLING ENGINEERING ORGANIZATION SHOULD BE CONTACTED FOR THE LATEST REVISION.						WEIGHT -		CUSTOMER DRAWING		SCALE 5:1	SHEET 1 of 1	REV P1

# Mouser Electronics

Authorized Distributor

Click to View Pricing, Inventory, Delivery & Lifecycle Information:

[TE Connectivity:](#)

[2-320561-3](#)