

DRAWING MADE IN AMERICAN PROJECTION

LOC

G

PRINT DIST

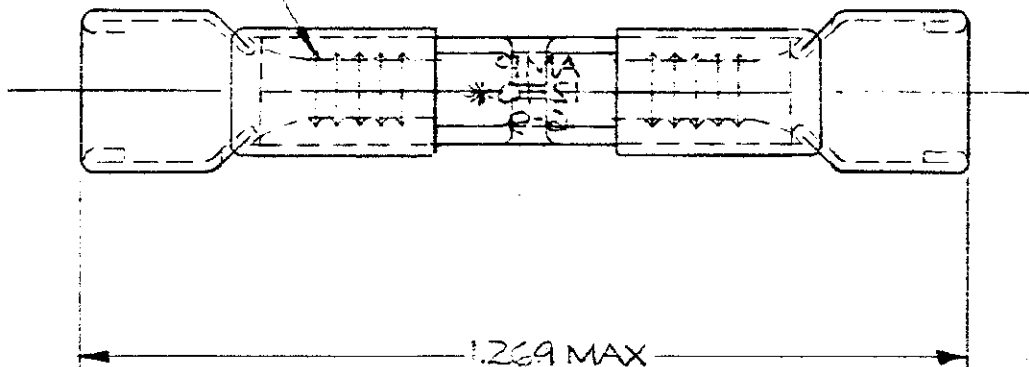
K C

©1957 BY AMP INCORPORATED. ALL RIGHTS RESERVED. AMP PRODUCTS COVERED BY PATENTS AND/OR PATENTS PENDING.

REVISIONS

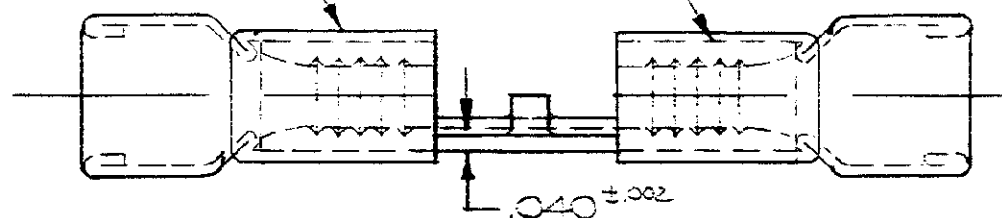
LTR	DESCRIPTION	DATE	APPROVED
A	REDRAWN & REV. PC-5575 WM	9-14-71	FCY
B	REV. PER E.C.N. G-1345 VW	11-14-77	CLK
C	REV PER ECN P-8604 JL	5-16-80	f121

SERRATIONS



SLEEVE

BODY



FOR .150 TO .220 WIRE INSULATION DIA.

UNLESS OTHERWISE SPECIFIED DIMENSIONS ARE IN INCHES
TOLERANCES ON:
DECIMALS $\pm .005$
ANGLES $\pm 5^\circ$

MATERIAL

BODY & SLEEVE
COPPER (CC-C576)
TIN PL (MIL-T-10727)

ANNEALED

CONTRACT NO. — 4 —

DR.

CHK

APPD

REL

DSGN APPD

OTHER APPD



AMP INCORPORATED
HARRISBURG, PENNSYLVANIA

NAME

WIRE SPLICE
DIAMOND GRIP-BUTT-STRAP
WIRE SIZE: 12-10

SIZE

A

CODE IDENT NO.

00779

NUMBER

31834

SCALE NTS

SHEET 1 OF 1

Mouser Electronics

Authorized Distributor

Click to View Pricing, Inventory, Delivery & Lifecycle Information:

[TE Connectivity:](#)

[31834](#)