



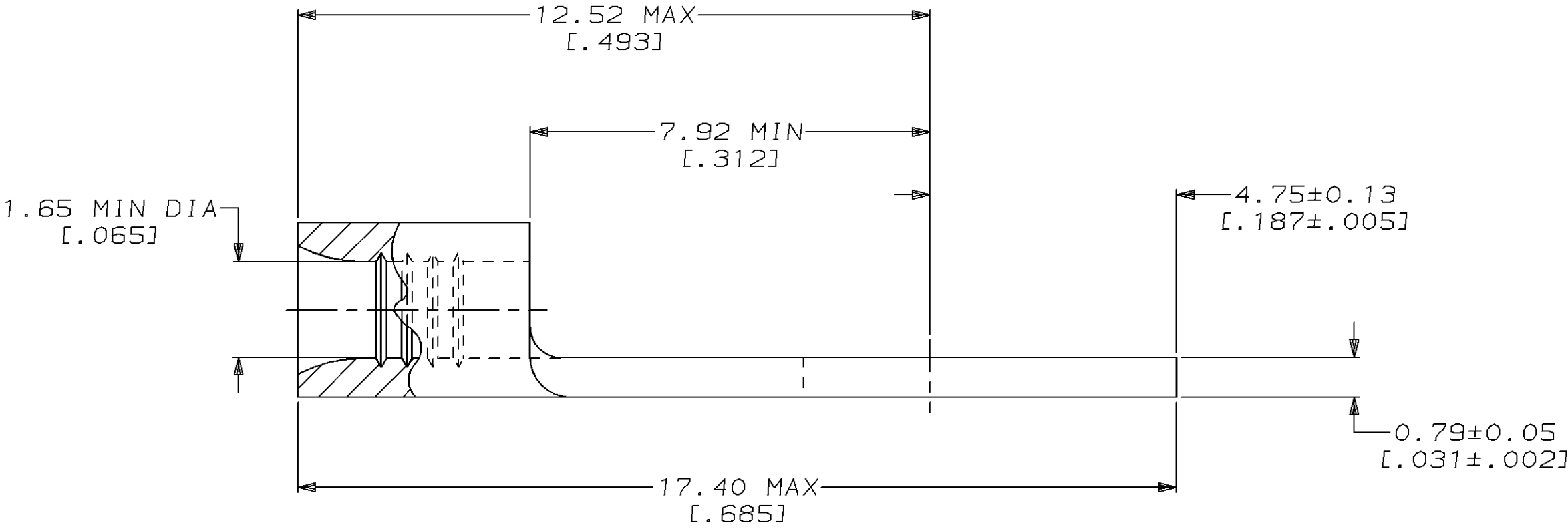
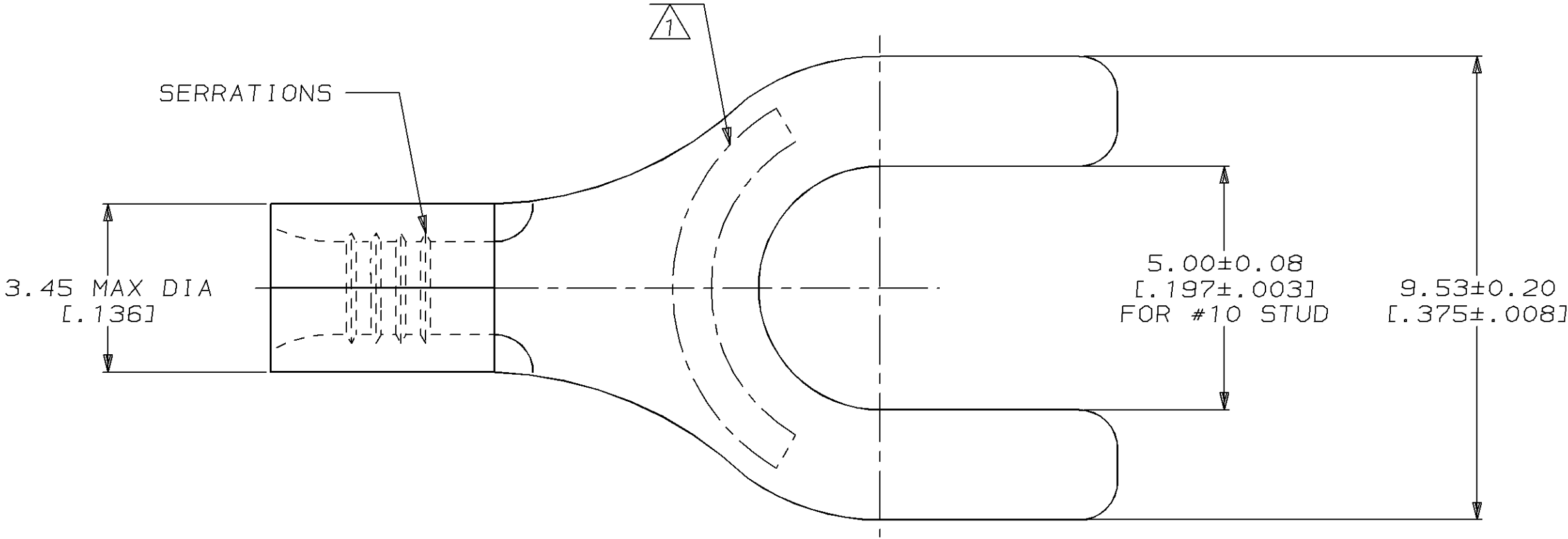
LOC	DIST	P	F	ZONE	LTR	DESCRIPTION	DATE	APPD
G	14				C	REVISED PER 0720-0937-96	03JUN96	OKS MJS

METRIC

DIMENSIONS LISTED IN mm [INCHES]

AMP WIRE RANGE	 E13288 Listed
22-16 AWG STRANDED	22-16 AWG STRANDED
 LR7189 Certified	MILITARY P/N AND CLASS
NOT CERTIFIED	NOT APPLICABLE

⚠ STAMP AMP 22-18* APPROX AS SHOWN
22-16 TERMINALS ARE STAMPED 22-18 IN
ACCORDANCE WITH MILITARY SPECIFICATION
MIL-T-7928; COMMERCIAL WIRE RANGE IS 22-16



							50		LOOSE PIECE, BOX		8-31636-2	
							-		LOOSE PIECE		31636	
							QUANTITY		PACKAGE TYPE		PART NO	
AMP INCORPORATED CUSTOMER SERVICE SYSTEMS			MAX RECOMMENDED OPERATING TEMPERATURE: 170°C MAX		DO NOT SCALE PRINT. UNLESS SPECIFIED DIMENSIONS IN mm [INCHES] TOLERANCES ON : 2 PLC DEC ± - 3 PLC DEC ± - ANGLES ± - MATERIAL COPPER PER ASTM B-152 ANNEALED		DR 2-17-93 TA BRINKMAN CHK 2-17-93 DA PATTERSON APPD 2-17-93 DE MILLER APPD 2-17-93 JL MECKLEY PRODUCT SPEC -		<div>AMP AMP Incorporated Harrisburg, PA 17105-3608</div>			
FOR ADDITIONAL PRODUCT INFORMATION OR COPIES OF DRAWINGS AND TECHNICAL DOCUMENTS		PRODUCT INFORMATION CENTER 1-800-522-6752		VOLTAGE RATING: NOT APPLICABLE		FINISH TIN PLATE 0.00254[.000100] MIN THK PER MIL-T-10727		APPLICATION SPEC -		NAME TERMINAL, SPADE TONGUE, BUDGET		
FOR APPLICATION TOOLING INFORMATION		TOOLING ASSISTANCE CENTER 1-800-722-1111		WIRE CROSS SECTIONAL AREA RANGE: 0.26-1.65mm² [509-3,260] CIR MILS STRANDED								
FOR ORDER ENTRY		1-800-526-5142		THIS DRAWING IS A CONTROLLED DOCUMENT FOR AMP INCORPORATED. IT IS SUBJECT TO CHANGE AND THE CONTROLLING ENGINEERING ORGANIZATION SHOULD BE CONTACTED FOR THE LATEST REVISION.		WEIGHT -		SCALE 10:1		SHEET 1 OF 1		

Mouser Electronics

Authorized Distributor

Click to View Pricing, Inventory, Delivery & Lifecycle Information:

[TE Connectivity:](#)

[31636](#)