

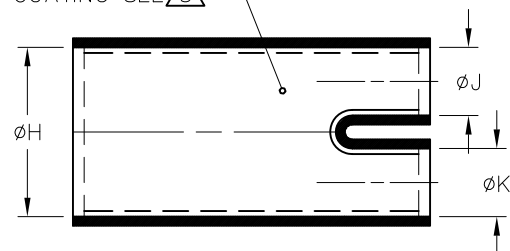
4

3

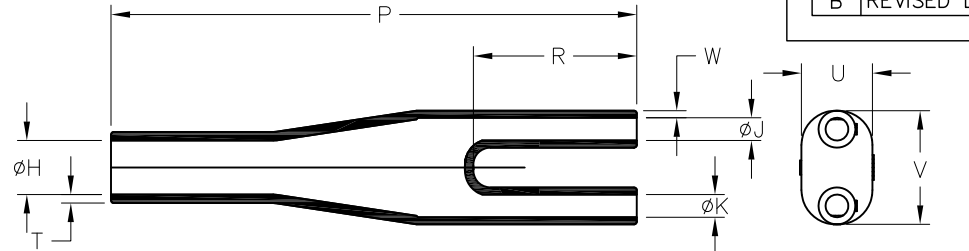
2

1

COATING SEE 3

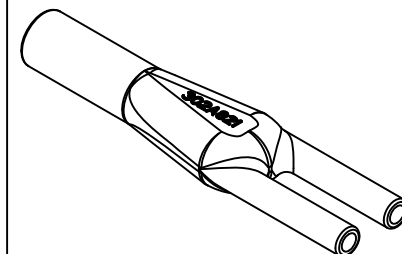


AS SUPPLIED



AFTER UNRESTRICTED RECOVERY

REVISIONS		
LTR	DESCRIPTION	DATE
B	REVISED DWG PER ECO-11-002021	01/28/2011



## NOTES:

1. ALL DIMENSIONS ARE IN:  $\frac{\text{INCHES}}{\text{MILLIMETERS}}$

2. DIMENSION APPEARING IN TABLE ARE AS FOLLOWS:

- a - AS SUPPLIED  
b - AFTER UNRESTRICTED RECOVERY

3. COATING (ADHESIVE) IS OPTIONAL. AS SUPPLIED DIMENSIONS APPEARING IN TABLE ARE FOR UNCOATED PARTS. WHEN COATING IS ADDED, ENTRY DIAMETER WILL BE REDUCED BY .06 MAX.

ORDERING INFORMATION: 302A821 -XX -XX /XX -0

BASE PART NUMBER

MATERIAL DASH NUMBER  
(See Compatibility Chart)

MODIFICATION NUMBER

ADHESIVE SLASH NUMBER  
(See Compatibility Chart)

COLOR DESIGNATOR

TABLE of DIMENSIONS

PART DESCRIPTION	H		J & K		P	R	T	W	U	V
	MIN a	MAX b	MIN a	MAX b	±10% b	±10% b	±20% b	±20% b	REF b	REF b
302A821	1.30 [33,0]	.37 [9,4]	.69 [17,5]	.16 [4,1]	3.70 [94,0]	1.18 [29,9]	.06 [1,6]	.05 [1,3]	.50 [12,7]	.80 [20,3]

If this document is printed it becomes uncontrolled. Check for the latest revision

COMPATIBILITY CHART

MATERIAL DASH No.	MATERIAL DESCRIPTION	RT SPEC	ADHESIVE COATING SLASH No.	ADHESIVE COATING "S" No.
-3	POLYOLEFIN, SEMI-RIGID	RT-301	/42, /86	S-1017, S-1048
-4	POLYOLEFIN, FLEXIBLE	RT-1304	/42, /86	S-1017, S-1048
-25	ELASTOMER, FLUID RESISTANT	RW-2070	/225	S-1206

UNLESS OTHERWISE SPECIFIED, DIMENSIONS ARE IN INCHES. METRIC DIMENSIONS ARE IN BRACKETS.

DECIMAL TOLERANCES

.XXX ± 0.005 [0.13 mm]  
.XX ± 0.01 [0.25 mm]  
.X ± 0.1 [0.50 mm]

ANGLE TOLERANCE

.X ± 1 DEG.

TYCO ELECTRONICS RESERVES THE RIGHT TO AMEND THIS DRAWING AT ANY TIME. USERS SHOULD EVALUATE THE SUITABILITY OF THE PRODUCT FOR THEIR APPLICATION.

© 2010-2011 Tyco Electronics Corporation. All rights reserved.

DRAWN G.Rositano  
09/13/2010

APPROVED D.Hurrell  
09/13/2010

RPN

THIRD ANGLE PROJECTION



## CUSTOMER DRAWING

**Tyco Electronics**

Raychem Molded Parts  
305 Constitution Dr  
Menlo Park, CA 94025

TITLE

TRANSITION, 3 ENTRY

SIZE  
B

CODE IDENT. NO.  
06090

DWG. NO.

302A821

DO NOT SCALE THIS DRAWING

SHEET 1 OF 1

4

3

2

1

# Mouser Electronics

Authorized Distributor

Click to View Pricing, Inventory, Delivery & Lifecycle Information:

[TE Connectivity:](#)

[302A8214/86-0CS1821](#)