

4

3

2

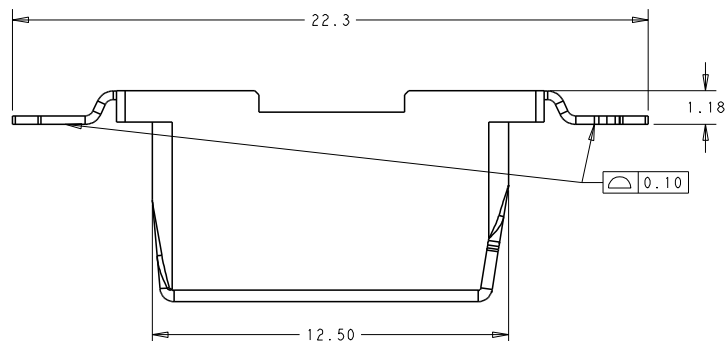
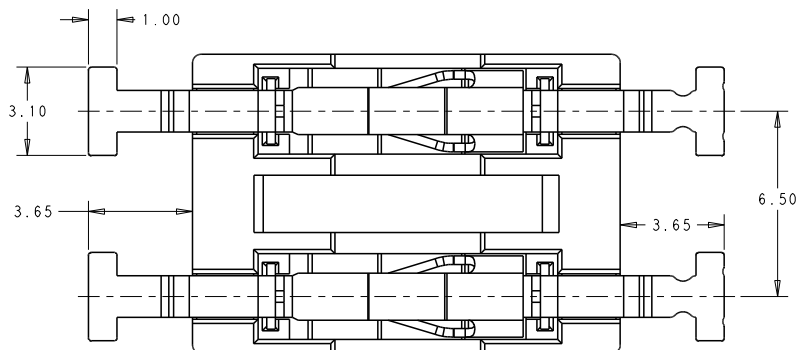
1

THIS DRAWING IS UNPUBLISHED.
RELEASED FOR PUBLICATION
20
BY -
ALL RIGHTS RESERVED.

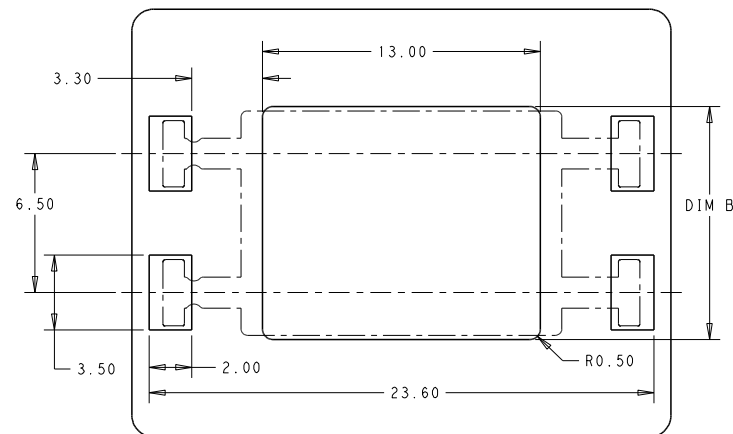
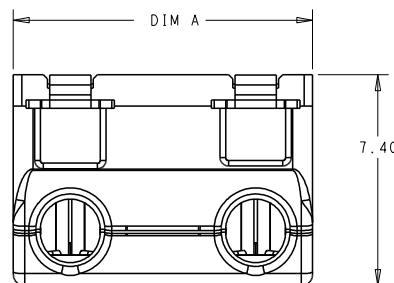
NOTES :

- MATERIALS AND FINISH:
 - HOUSING: HIGH THERMAL PLASTIC, COLOR: WHITE
 - CONTACTS: COPPER ALLOY, FINISH: PRE-TIN OVER NICKEL UNDERPLATE
- MUST COMPLY WITH DIRECTIVE 2002/95/EC (ROHS)
- OPERATING TEMPERATURE: -55°C-105°C
- WIRE TYPES AND SIZES ACCEPTED
 - SOLID WIRE: 18AWG, 20AWG, 22AWG, 24AWG
 - STRAND WIRE: 18AWG (STRANDS: 16); 20AWG (STRANDS: 7); 22AWG (STRANDS: 7); 24AWG (UL1061/STRANDS: 7)
 - MAX INSULATION OD: 2.1mm MAX.
 - STRIP LENGTH: 8.0±0.5mm
- PACKAGED IN TAPE AND REEL

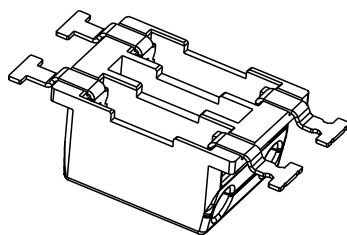
| REVISIONS | | | | | |
|-----------|-----|---------------------------|-----------|-----|------|
| P | LYR | DESCRIPTION | DATE | DWN | APVD |
| | A | FIRST VERSION | 13NOV2018 | G.F | S.M |
| | A1 | ADD OPERATING TEMPERATURE | 20NOV2019 | G.F | S.M |
| | | | | | |
| | | | | | |



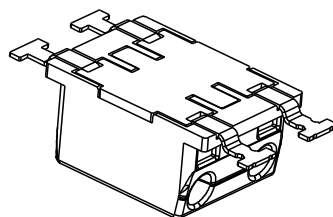
SCALE 8:1



SCALE 6:1



W/O CAP TYPE
P/N: 2834331-1/2



WITH CAP TYPE
P/N: 1-2834331-1/2

| | | | |
|-------|-------|----------|-------------|
| 10.9 | 10.5 | 2 | 1-2834331-2 |
| 10.9 | 10.5 | 2 | 2834331-2 |
| 4.4 | 4.0 | 1 | 1-2834331-1 |
| 4.4 | 4.0 | 1 | 2834331-1 |
| DIM B | DIM A | POLES No | PART NO |

| | | | | |
|--|--|--------------------------------|---|--|
| THIS DRAWING IS A CONTROLLED DOCUMENT. | | DWN GEORGE FU 13NOV2018 | TE Connectivity | |
| DIMENSIONS: | | CHK GEORGE FU 13NOV2018 | | |
| TOLERANCES UNLESS OTHERWISE SPECIFIED: | | APVD SHI MING 13NOV2018 | NAME 6.5mm PITCH ITB RELEASABLE POKE-IN CONN. | |
| DIMENSIONS: | | PRODUCT SPEC 108-137311 | SIZE A200779 | |
| TOLERANCES UNLESS OTHERWISE SPECIFIED: | | APPLICATION SPEC 114-137311 | CAGE CODE C=2834331 | |
| MATERIAL | | WEIGHT | RESTRICTED TO | |
| NOTE 1 | | CUSTOMER DRAWING | SCALE 4:1 SHEET 1 OF 1 REV A1 | |

Mouser Electronics

Authorized Distributor

Click to View Pricing, Inventory, Delivery & Lifecycle Information:

[TE Connectivity:](#)

[1-2834331-2](#)