

LDC		REVISONS		DATE		DATE		DATE	
P	LTR	DESCRIPTION	DATE	DATE	DATE	DATE	DATE	DATE	DATE
A	1	FIRST VERSION	15JAN2015	15JAN2015	15JAN2015	15JAN2015	15JAN2015	15JAN2015	15JAN2015

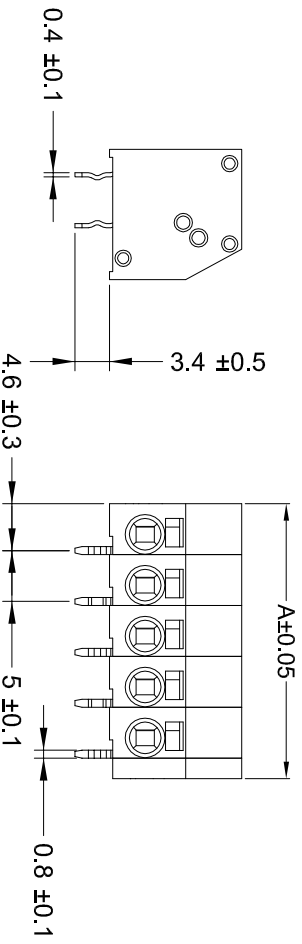
NOTES :

- MATERIALS AND FINISH:
- HOUSING: PA66
 - CONTACTS: COPPER ALLOY, FINISH: TIN OVER NICKEL UNDERPLATE
 - SPRING: STAINLESS STRIP STEEL

2. MUST COMPLY WITH DIRECTIVE 2002/95/EC (ROHS)
3. WIRE TYPES AND SIZES ACCEPTED
- SOLID WIRE: 16AWG~20AWG.
- STRIP LENGTH: 7.5mm~8.5mm
4. PACKAGED IN TRAY.
5. CURRENT RATING: 10Amp AC300V.
6. OPERATION TEMPERATURE: -40°C TO +105°C

P/N: *-2834014-*

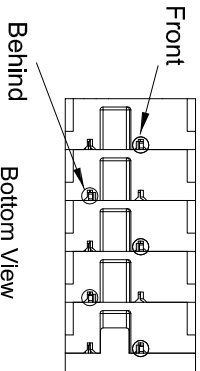
COLOR CODE: _____ PIN No: _____



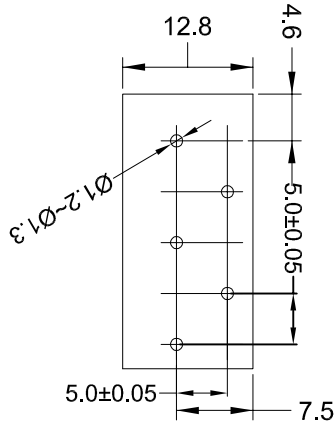
DETAIL INNER

- SERIES CODE
- 1=GREEN
 - 2=BLUE
 - 3=BROWN
 - 4=ORANGE
 - 5=GREY
 - 6=RED
 - 7=YELLOW
 - 8=PURPLE
 - 9=WHITE
 - 0=BLACK
- 2=2 POSN
- 3=3 POSN
 - 4=4 POSN
 - 5=5 POSN
 - 6=6 POSN
 - 7=7 POSN
 - 8=8 POSN

REMARK: THE DIFFERENT COLORS COULD BE COMBINED TO THE NEW CONNECTOR P/NS FOR CUSTOMER REQUEST.



42.00	8 POSN
37.00	7 POSN
32.00	6 POSN
27.00	5 POSN
22.00	4 POSN
17.00	3 POSN
12.00	2 POSN
A	NO. OF POSITIONS



THIS DRAWING IS A CONTROLLED DOCUMENT		DATE: 15JAN2015		BY: GEORGE ELISABETH	
DRAWING NO: 108-137078		DATE: 15JAN2015		BY: SHI YIANG	
REVISION: 1		DATE: 15JAN2015		BY: SHI YIANG	
APPROVAL: 114-107078		DATE: 15JAN2015		BY: SHI YIANG	
CUSTOMER DRAWING: -		DATE: 15JAN2015		BY: SHI YIANG	
SCALE: 1:1		SHEET: 1 OF 1		REV: A	



50mm Pitch Modular Screwless Conn.

Mouser Electronics

Authorized Distributor

Click to View Pricing, Inventory, Delivery & Lifecycle Information:

[TE Connectivity:](#)

[1-2834014-3](#)