

THIS DRAWING IS UNPUBLISHED.

RELEASED FOR PUBLICATION

- , - .

© COPYRIGHT — TE Connectivity Ltd.

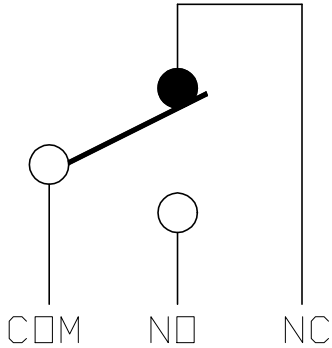
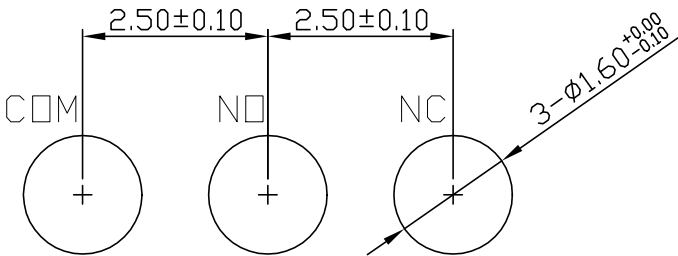
ALL RIGHTS RESERVED.

REVISIONS

P	LTR	DESCRIPTION	DATE	DWN	APVD
	1	NEW DRAWING	13MAY2019	GCM	AS

APPLICABLE FOR TE P/N

2351460-1



THIS DRAWING IS A CONTROLLED DOCUMENT.

DWN 13MAY2019

CHK GANESH C M

13MAY2019

ALEXANDER SHARPE

APVD 13MAY2019

ALEXANDER SHARPE

PRODUCT SPEC

APPLICATION SPEC

WEIGHT

CUSTOMER DRAWING



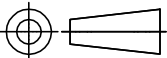
TE Connectivity Ltd.

NAME
SWITCH, MINIATURE SNAP ACTION, HINGE LEVER,
STRAIGHT TERMINALS

SIZE	CAGE CODE	DRAWING NO	RESTRICTED TO
A3	00779	C=2351460	—

SCALE NTS SHEET 1 of 4 REV 1

DIMENSIONS:
mm



TOLERANCES UNLESS
OTHERWISE SPECIFIED:

0 PLC	± —
1 PLC	± 0.15
2 PLC	± 0.15
3 PLC	± —
4 PLC	± —
ANGLES	± —

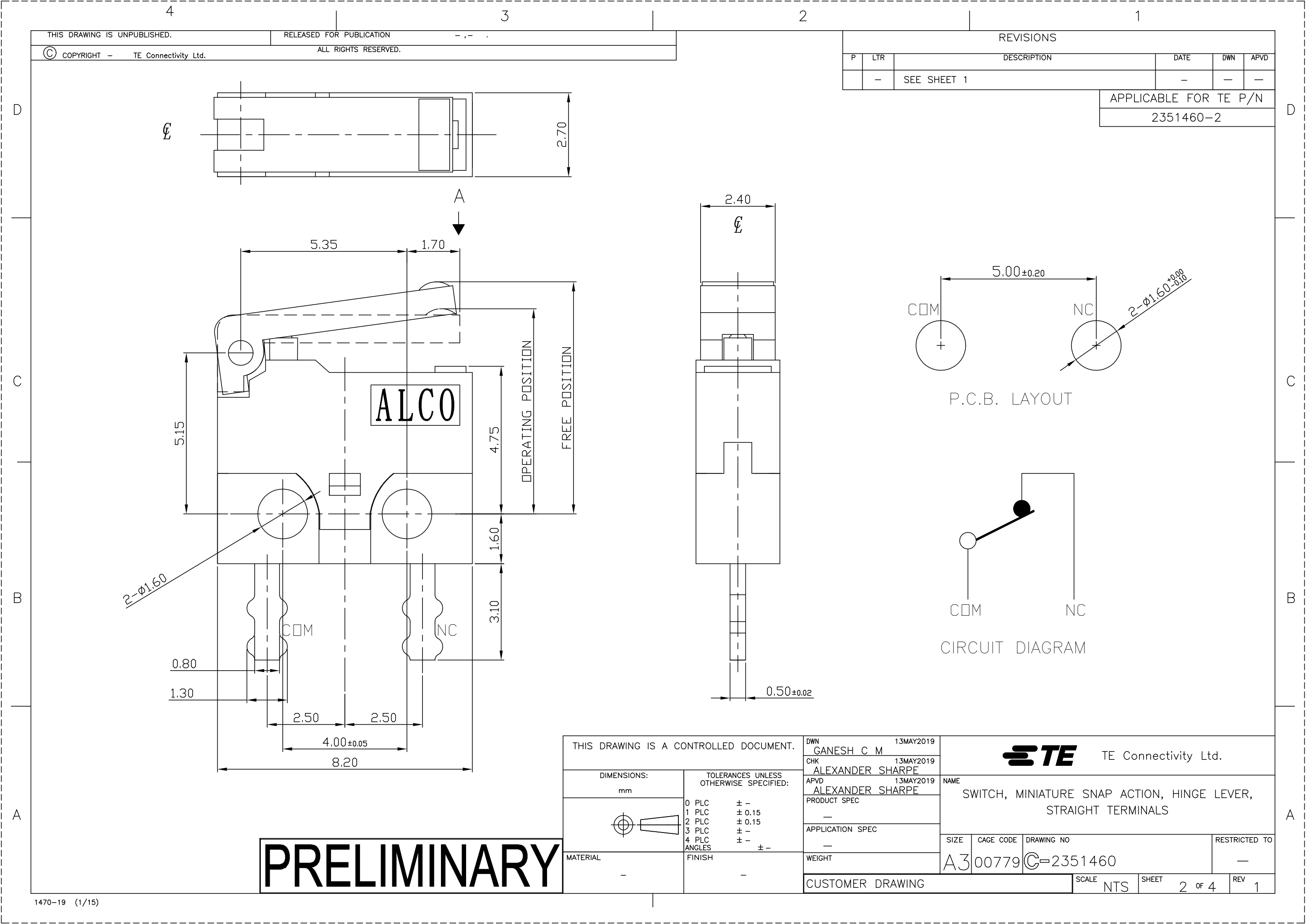
MATERIAL

—

FINISH

—

PRELIMINARY



THIS DRAWING IS UNPUBLISHED.

RELEASED FOR PUBLICATION

- , -

© COPYRIGHT - TE Connectivity Ltd.

ALL RIGHTS RESERVED.

REVISIONS

P	LTR	DESCRIPTION	DATE	DWN	APVD
-	-	SEE SHEET 1	-	-	-

APPLICABLE FOR TE P/N

2351460-2

ALCO

P.C.B. LAYOUT

CIRCUIT DIAGRAM

PRELIMINARY

THIS DRAWING IS A CONTROLLED DOCUMENT.

DWN 13MAY2019

CHK GANESH C M

13MAY2019

APVD ALEXANDER SHARPE

13MAY2019

PRODUCT SPEC

APPLICATION SPEC

WEIGHT

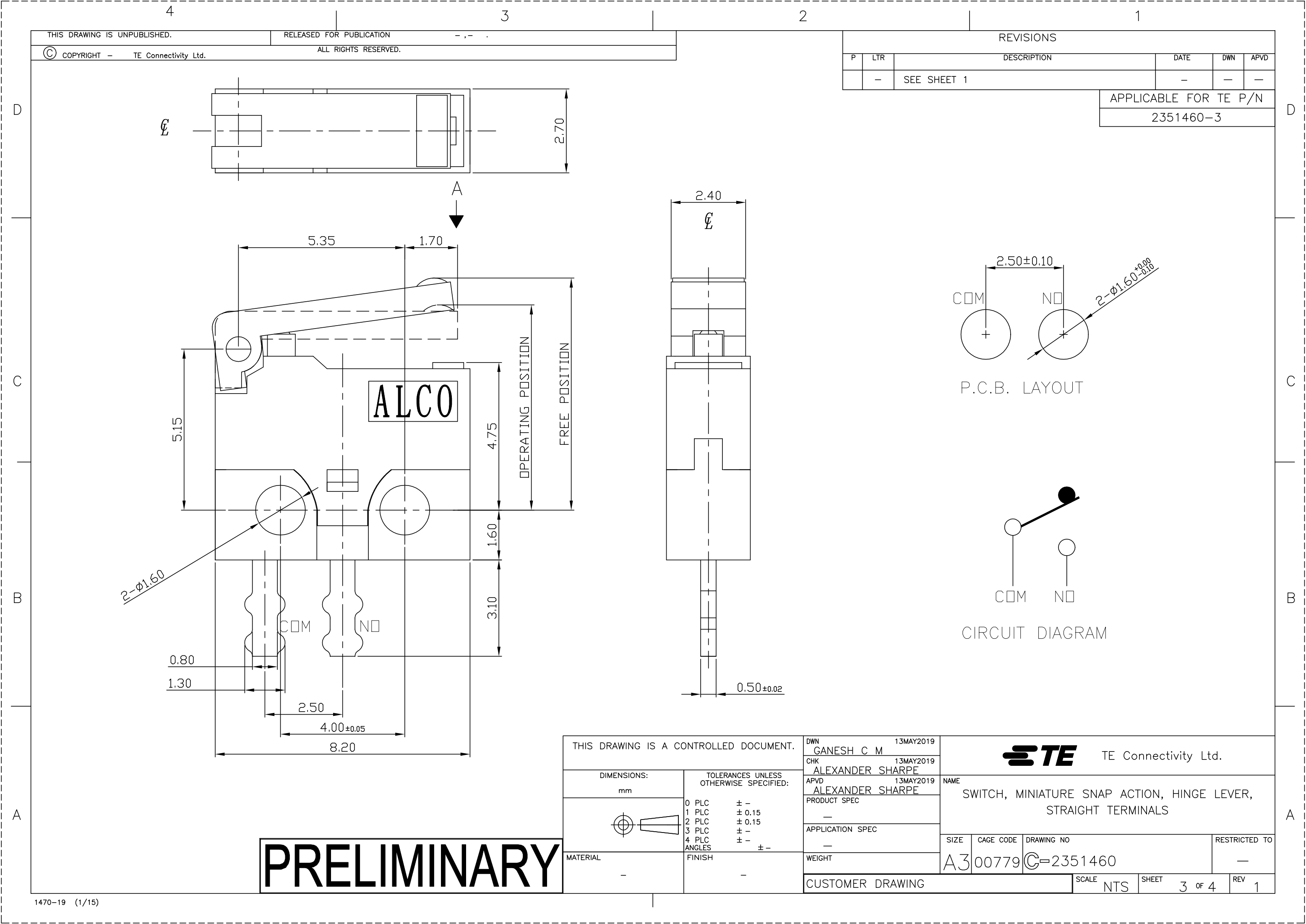
CUSTOMER DRAWING



TE Connectivity Ltd.

NAME
SWITCH, MINIATURE SNAP ACTION, HINGE LEVER,
STRAIGHT TERMINALS

SIZE	CAGE CODE	DRAWING NO	RESTRICTED TO
A3	00779	C=2351460	-
SCALE	NTS	SHEET 2 of 4	REV 1



THIS DRAWING IS UNPUBLISHED.

RELEASED FOR PUBLICATION

- , -

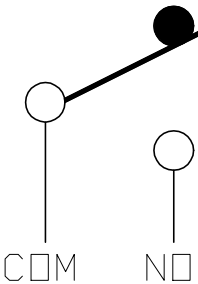
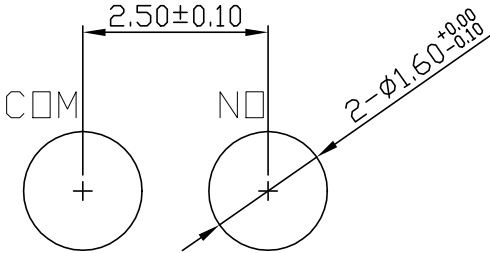
© COPYRIGHT - TE Connectivity Ltd.

ALL RIGHTS RESERVED.

REVISIONS

P	LTR	DESCRIPTION	DATE	DWN	APVD
-	-	SEE SHEET 1	-	-	-

APPLICABLE FOR TE P/N
2351460-3



THIS DRAWING IS A CONTROLLED DOCUMENT.

DWN 13MAY2019

CHK GANESH C M

13MAY2019

ALEXANDER SHARPE

APVD 13MAY2019

ALEXANDER SHARPE

PRODUCT SPEC

APPLICATION SPEC

WEIGHT

CUSTOMER DRAWING



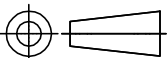
TE Connectivity Ltd.

NAME
SWITCH, MINIATURE SNAP ACTION, HINGE LEVER,
STRAIGHT TERMINALS

SIZE	CAGE CODE	DRAWING NO	RESTRICTED TO
A3	00779	©=2351460	-

SCALE NTS SHEET 3 of 4 REV 1

DIMENSIONS:
mm



MATERIAL

TOLERANCES UNLESS
OTHERWISE SPECIFIED:

0 PLC ± -
1 PLC ± 0.15
2 PLC ± 0.15
3 PLC ± -
4 PLC ± -
ANGLES ± -

FINISH

PRELIMINARY

4

3

2

1

THIS DRAWING IS UNPUBLISHED.	RELEASED FOR PUBLICATION - , - .
© COPYRIGHT - TE Connectivity Ltd.	ALL RIGHTS RESERVED.


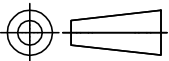
REVISIONS					
P	LTR	DESCRIPTION	DATE	DWN	APVD
	-	SEE SHEET 1	-	-	-

NOTES:

1. OPERATING CHARACTERISTICS ARE FOR OPERATION IN THE A DIRECTION ↓
2. PACKAGING:
SWITCHES ARE BULK PACKAGED IN BAGS, 500 SWITCHES PER BAG, 2 BAGS PER BOX.
3. COMPLIANCE:
THE CURRENT STATEMENT OF COMPLIANCE IS AVAILABLE AT TE.COM.
4. MATERIAL AND FINISH:
COVER: THERMOPLASTIC, BLACK
BASE: THERMOPLASTIC, BLACK
BUTTON: THERMOPLASTIC, BLACK
CONTACT: SILVER ALLOY
TERMINAL: BRASS, SILVER PLATED
SPRING PLATE: COPPER ALLOY
LEVER: THERMOPLASTIC, BLACK
5. SPECIFICATIONS:
CURRENT RATING: SEE TABLE
CONTACT RESISTANCE: 100mΩ MAXIMUM, INITIAL, AT FREE POSITION AND TOTAL TRAVEL POSITION
INSULATION RESISTANCE: 100MΩ MINIMUM, @ 100 V DC, 1 MINUTE, INITIAL.
DIELECTRIC WITHSTANDING VOLTAGE, BETWEEN TERMINALS OF THE SAME POLARITY: 250 V AC, 50 TO 60 Hz FOR 1 MINUTE
DIELECTRIC WITHSTANDING VOLTAGE, BETWEEN EACH TERMINAL AND GROUND: 250 V AC, 50 TO 60 Hz FOR 1 MINUTE
DIELECTRIC WITHSTANDING VOLTAGE, BETWEEN EACH TERMINAL AND NON-CURRENT CARRYING METAL PART :1500 V AC, 50 TO 60 Hz FOR 1 MINUTE
6. SOLDER PROCESS:
MANUAL SOLDERING: 350°C, 3 SECONDS MAXIMUM, 30 TO 40 WATTS. PREVENT SOLDER AND FLUX CONTACTING THE SWITCH BODY.
DO NOT OPERATE THE SWITCH DURING THE FIRST MINUTE AFTER SOLDERING.
WAVE SOLDERING: 260°C, 5 SECONDS MAXIMUM. PREVENT SOLDER AND FLUX CONTACTING THE SWITCH BODY.
DO NOT OPERATE THE SWITCH DURING THE FIRST MINUTE AFTER SOLDERING.

SILVER	SPST, NORMALLY OPEN	100,000 CYCLES, MINIMUM	50,000 CYCLES, MINIMUM	-40 TO +85°C/85% RELATIVE HUMIDITY MAXIMUM	-40 TO +85°C/60% RELATIVE HUMIDITY MAXIMUM	0.70 MAXIMUM	0.30 MINIMUM	1.80 MAXIMUM	6.7±0.5	8.0 MAXIMUM	3 gf MINIMUM	50 gf MAXIMUM	0.5A, 30V DC	MOMENTARY	STRAIGHT	SAJ405XHL0N30SNOUPQ	2351460-3
	SPST, NORMALLY CLOSED															SAJ405XHL0N30SNCUPQ	2351460-2
	SPDT															SAJ405XHL0N30SDTUPQ	2351460-1
CONTACT FINISH	CONTACT FORM	MECHANICAL LIFE	ELECTRICAL LIFE	STORAGE TEMPERATURE RANGE/HUMIDITY RANGE	OPERATING TEMPERATURE RANGE/HUMIDITY RANGE	MOVEMENT DIFFERENTIAL	OVERTRAVEL	PRETRAVEL	OPERATING POSITION	FREE POSITION	RELEASE FORCE	OPERATING FORCE	CONTACT RATING	CONTACT CONFIGURATION	TERMINAL TYPE	TE SMART PART NUMBER	PART NUMBER

PRELIMINARY

THIS DRAWING IS A CONTROLLED DOCUMENT.		DWN GANESH C M 13MAY2019	 TE Connectivity Ltd.				
		CHK ALEXANDER SHARPE 13MAY2019					
DIMENSIONS: mm		APVD ALEXANDER SHARPE 13MAY2019	NAME SWITCH, MINIATURE SNAP ACTION, HINGE LEVER, STRAIGHT TERMINALS				
		PRODUCT SPEC —					
MATERIAL —		APPLICATION SPEC —	SIZE A3			CAGE CODE 00779	
		WEIGHT —	DRAWING NO C=2351460			RESTRICTED TO —	
FINISH —		CUSTOMER DRAWING			SCALE NTS	SHEET 4 of 4	REV 1

Mouser Electronics

Authorized Distributor

Click to View Pricing, Inventory, Delivery & Lifecycle Information:

[TE Connectivity:](#)

[2351460-3](#)