

4

3

2

1

THIS DRAWING IS UNPUBLISHED.

RELEASED FOR PUBLICATION

© COPYRIGHT — TE Connectivity Ltd.

ALL RIGHTS RESERVED.

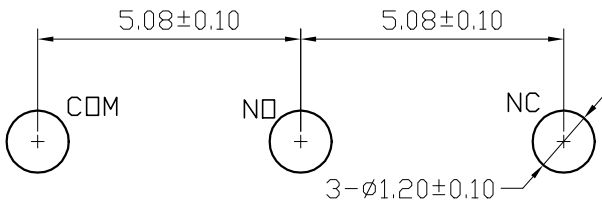
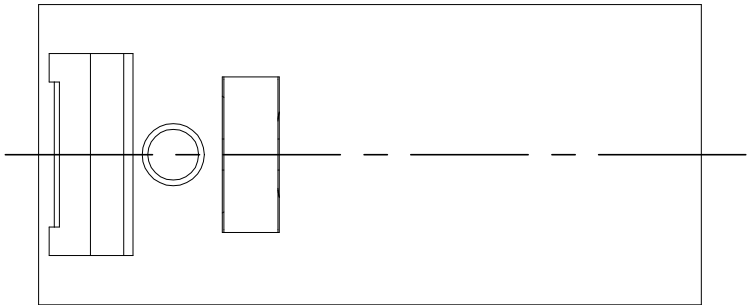
REVISIONS

P	LTR	DESCRIPTION	DATE	DWN	APVD
	1	NEW DRAWING	09MAY2019	GCM	AS

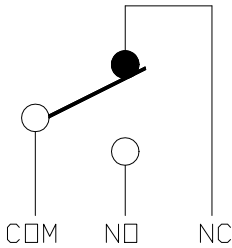
APPLICABLE FOR TE P/N

2351444-1

2351444-4



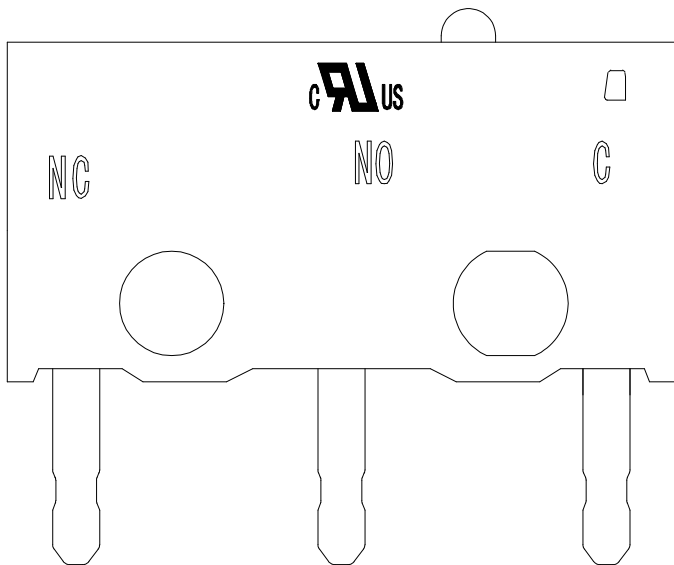
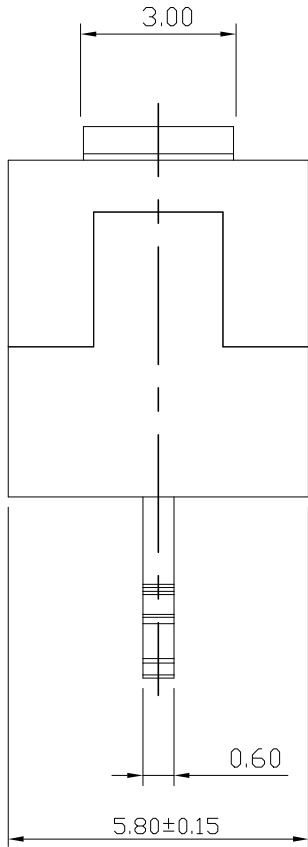
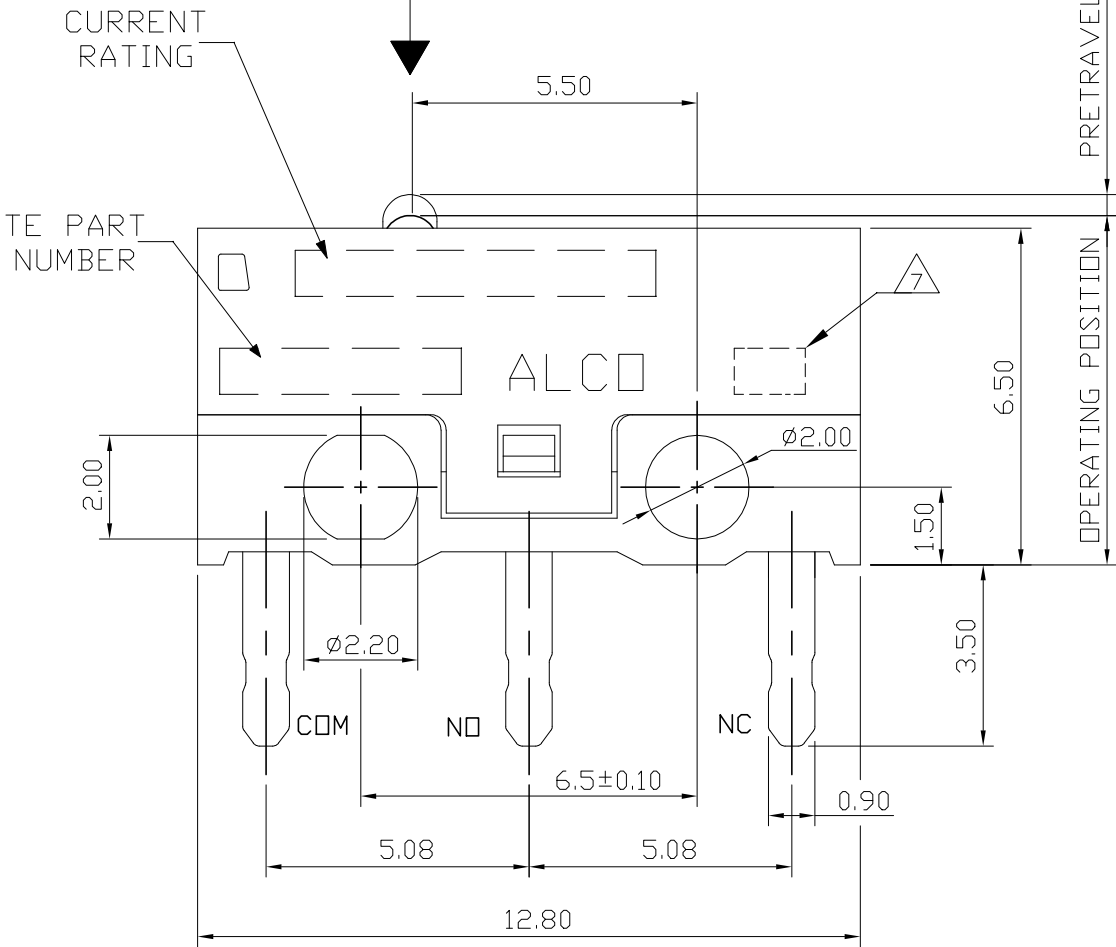
P.C.B LAYOUT




CIRCUIT DIAGRAM

PART MARKING

0.1A 30VDC 2351444-1 ALCO Y7	1.5A250VAC/3A125VAC 2351444-4 ALCO Y7
---------------------------------	--



PRELIMINARY

THIS DRAWING IS A CONTROLLED DOCUMENT.		DWN 09MAY2019 GANESH CM	 TE Connectivity		
		CHK 09MAY2019 ALEXANDER SHARPE			
		APVD 09MAY2019 ALEXANDER SHARPE	NAME SWITCH, ULTRA SUBMINIATURE SNAP ACTION, PIN PLUNGER, PCB TERMINAL		
		PRODUCT SPEC —			
		APPLICATION SPEC —	SIZE A3		
		WEIGHT —			
		CUSTOMER DRAWING	CAGE CODE 00779	DRAWING NO C-2351444	RESTRICTED TO —
		SCALE NTS	SHEET 1 of 4	REV 1	

THIS DRAWING IS UNPUBLISHED.

RELEASED FOR PUBLICATION

-,-



COPYRIGHT - TE Connectivity Ltd.

ALL RIGHTS RESERVED.

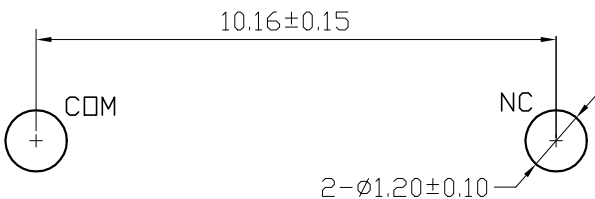
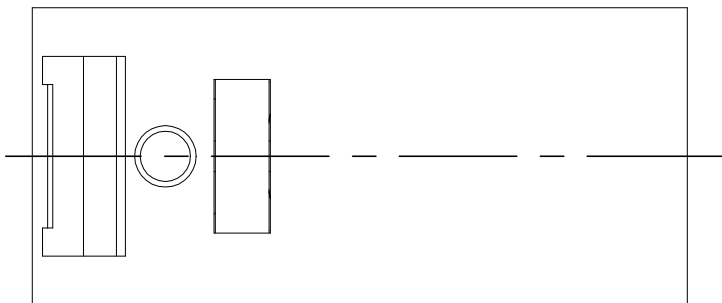
REVISIONS

P	LTR	DESCRIPTION	DATE	DWN	APVD
	-	SEE SHEET 1	-	-	-

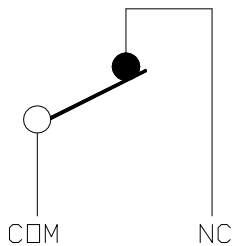
APPLICABLE FOR TE P/N

2351444-2

2351444-5



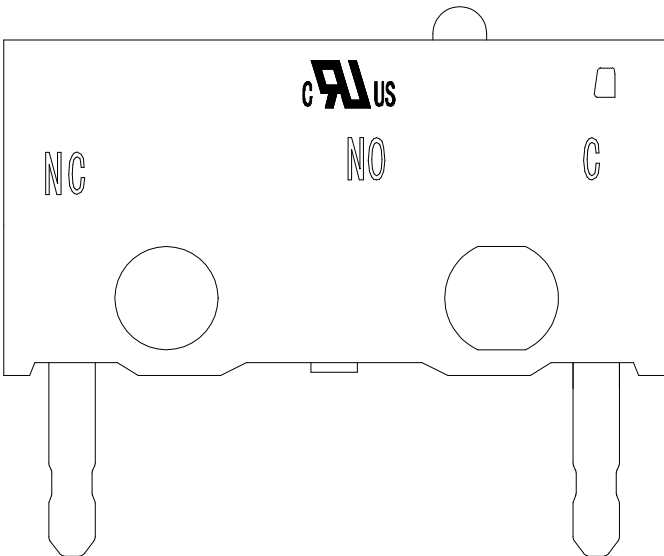
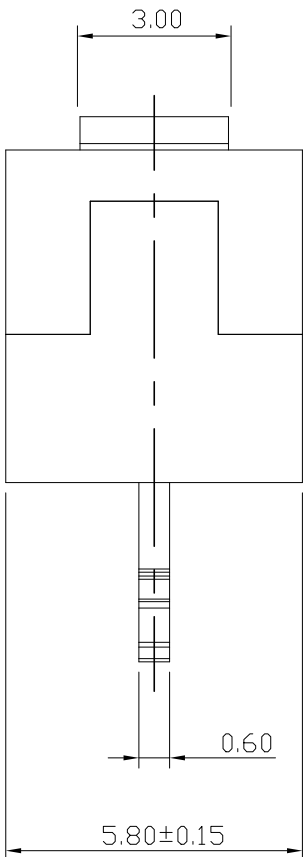
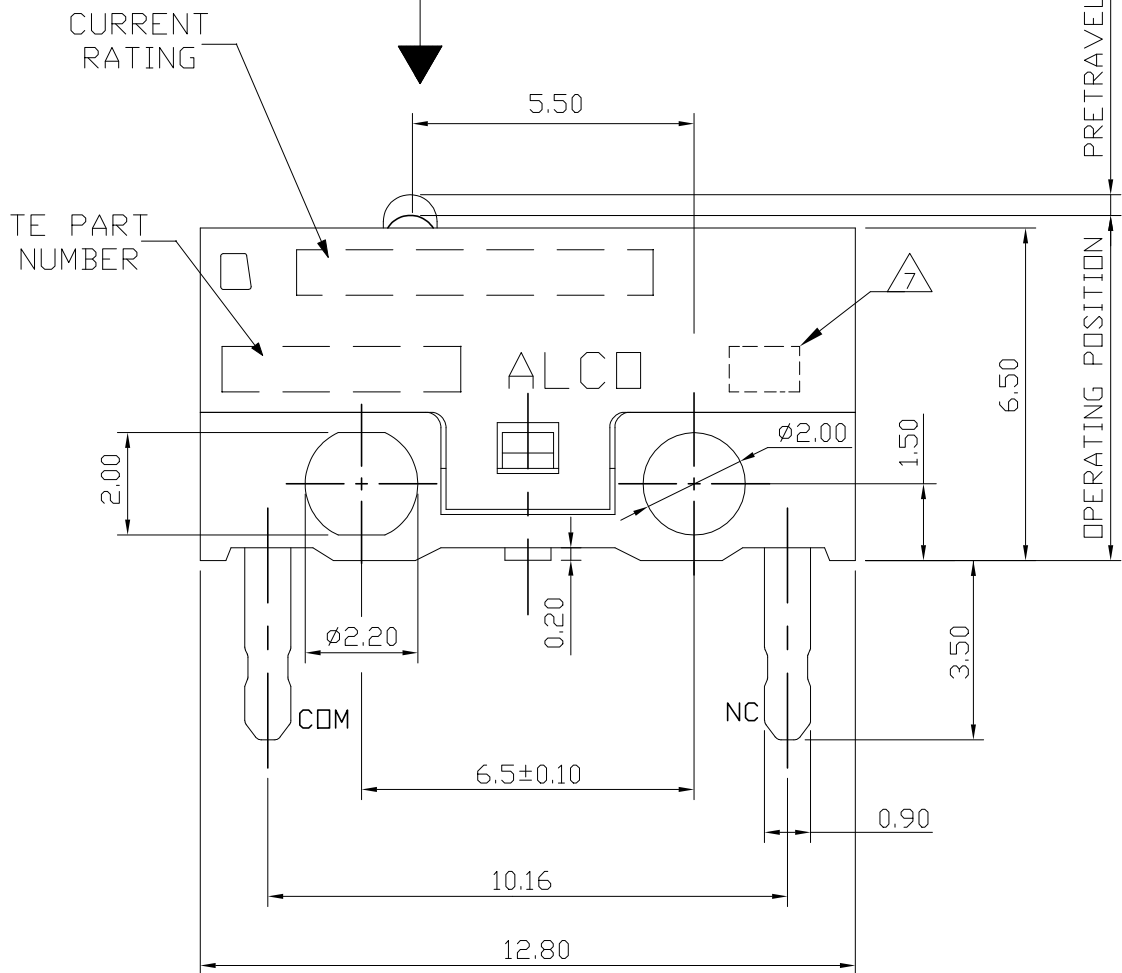
P.C.B LAYOUT




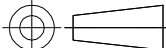
CIRCUIT DIAGRAM

PART MARKING

0.1A 30VDC 2351444-2 ALCO Y7	1.5A250VAC/3A125VAC 2351444-5 ALCO Y7
---------------------------------	--



PRELIMINARY

THIS DRAWING IS A CONTROLLED DOCUMENT.		DWN GANESH CM	09MAY2019				<div> TE Connectivity</div>						
DIMENSIONS: mm		CHK ALEXANDER SHARPE	09MAY2019				NAME SWITCH, ULTRA SUBMINIATURE SNAP ACTION, PIN PLUNGER, PCB TERMINAL						
		APVD ALEXANDER SHARPE	09MAY2019										
		PRODUCT SPEC —											
		APPLICATION SPEC —											
MATERIAL —		FINISH —		WEIGHT —		SIZE A3		CAGE CODE 00779		DRAWING NO C-2351444		RESTRICTED TO —	
CUSTOMER DRAWING						SCALE NTS		SHEET 2 OF 4		REV 1			

THIS DRAWING IS UNPUBLISHED.

RELEASED FOR PUBLICATION

- , -

© COPYRIGHT - TE Connectivity Ltd.

ALL RIGHTS RESERVED.

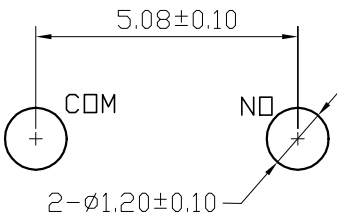
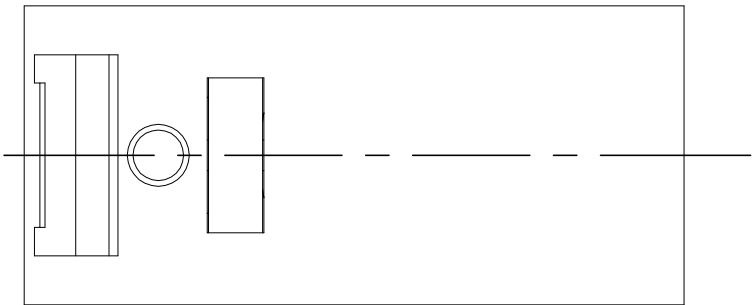
REVISIONS

P	LTR	DESCRIPTION	DATE	DWN	APVD
	-	SEE SHEET 1	-	-	-

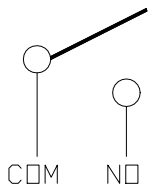
APPLICABLE FOR TE P/N:

2351444-3

2351444-6



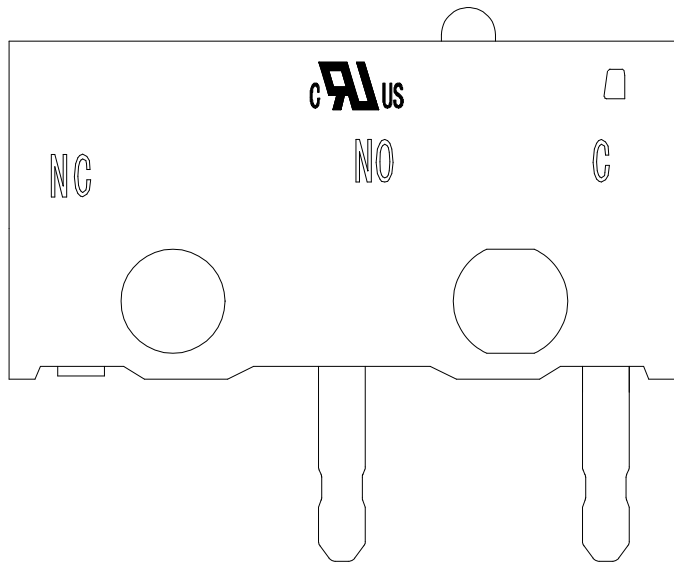
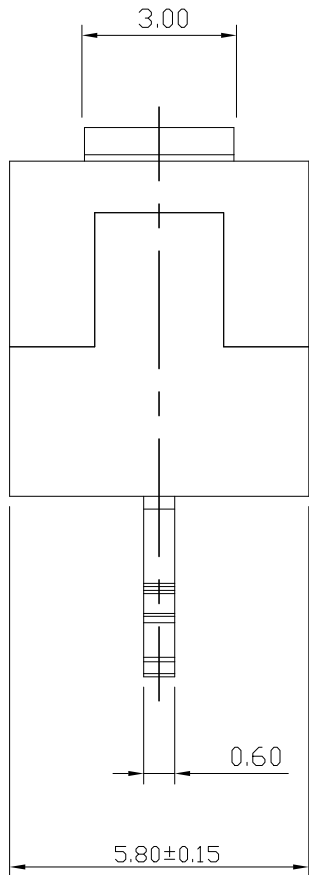
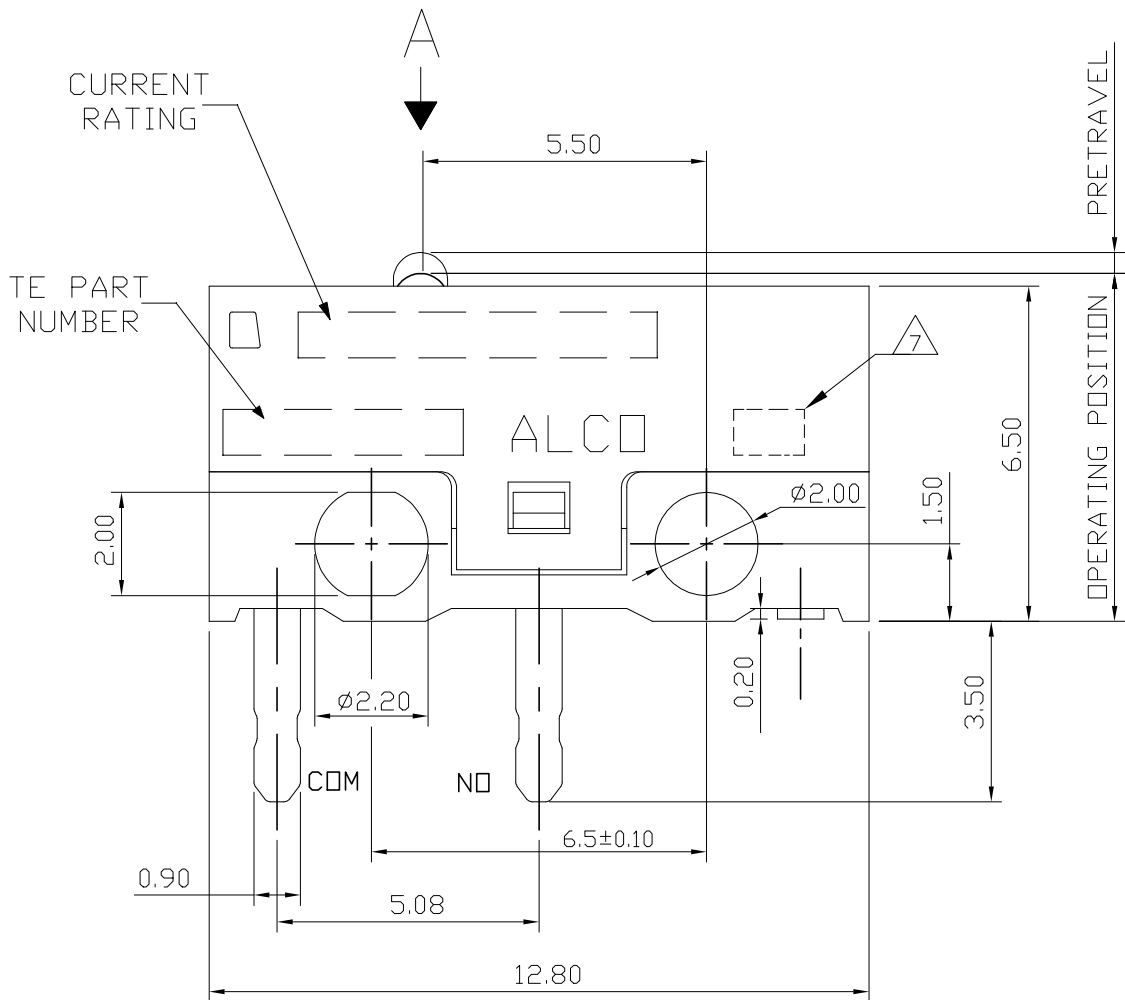
P.C.B LAYOUT




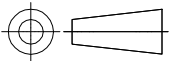
CIRCUIT DIAGRAM

PART MARKING

□ 0.1A 30VDC 2351444-3 ALCO Y7	□ 1.5A250VAC/3A125VAC 2351444-6 ALCO Y7
-----------------------------------	--



PRELIMINARY

THIS DRAWING IS A CONTROLLED DOCUMENT.		DWN 09MAY2019 GANESH CM	 TE Connectivity		
DIMENSIONS: mm		CHK 09MAY2019 ALEXANDER SHARPE			
		APVD 09MAY2019 ALEXANDER SHARPE	NAME SWITCH, ULTRA SUBMINIATURE SNAP ACTION, PIN PLUNGER, PCB TERMINAL		
		PRODUCT SPEC			
TOLERANCES UNLESS OTHERWISE SPECIFIED:		APPLICATION SPEC	SIZE CAGE CODE DRAWING NO RESTRICTED TO		
0 PLC ± -		—	A3 00779 C-2351444		
1 PLC ± -		—	SCALE NTS SHEET 3 of 4 REV 1		
2 PLC ± 0.4		—			
3 PLC ± -		—			
4 PLC ± -		—			
ANGLES ± -		—			
FINISH		—			
MATERIAL		—			
		CUSTOMER DRAWING			

THIS DRAWING IS UNPUBLISHED.	RELEASED FOR PUBLICATION
© COPYRIGHT — TE Connectivity Ltd.	ALL RIGHTS RESERVED.

REVISIONS					
P	LTR	DESCRIPTION	DATE	DWN	APVD
	—	SEE SHEET 1	—	—	—

NOTES:

1. OPERATING CHARACTERISTICS ARE FOR OPERATION IN THE A DIRECTION ▼
2. PACKAGING:
SWITCHES ARE BULK PACKAGED IN BAGS, 500 SWITCHES PER BAG, 2 BAGS PER BOX.
3. COMPLIANCE:
THE CURRENT STATEMENT OF COMPLIANCE IS AVAILABLE AT TE.COM.
4. MATERIAL AND FINISH:
BUTTON: THERMOPLASTIC, WHITE
COVER: THERMOPLASTIC, BLACK
BASE: THERMOPLASTIC, BLACK
SPRING PLATE: COPPER ALLOY
CONTACT: SILVER ALLOY, SILVER PLATED
TERMINAL: BRASS, SILVER PLATED
5. SPECIFICATIONS:
CURRENT RATING: SEE TABLE
CONTACT RESISTANCE: 100mΩ MAXIMUM INITIAL, AT FREE POSITION AND TOTAL TRAVEL POSITION.
INSULATION RESISTANCE: 100MΩ MINIMUM @ 500 V DC FOR 1 MINUTE, INITIAL.
DIELECTRIC WITHSTANDING VOLTAGE, BETWEEN TERMINALS OF THE SAME POLARITY: 600 V AC, 50 TO 60 Hz FOR 1 MINUTE
DIELECTRIC WITHSTANDING VOLTAGE, BETWEEN EACH TERMINAL AND GROUND: 1500 V AC, 50 TO 60 Hz FOR 1 MINUTE
DIELECTRIC WITHSTANDING VOLTAGE, BETWEEN EACH TERMINAL AND NON-CURRENT CARRYING METAL PART: 1500 V AC, 50 TO 60 Hz FOR 1 MINUTE
6. SOLDER PROCESS:
MANUAL SOLDERING: 350°C, 3 SECONDS MAXIMUM, 30 TO 40 WATTS. PREVENT SOLDER AND FLUX CONTACTING THE SWITCH BODY.
DO NOT OPERATE THE SWITCH DURING THE FIRST MINUTE AFTER SOLDERING.
WAVE SOLDERING: 260°C, 5 SECONDS MAXIMUM. PREVENT SOLDER AND FLUX CONTACTING THE SWITCH BODY.
DO NOT OPERATE THE SWITCH DURING THE FIRST MINUTE AFTER SOLDERING.


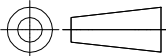
△7 DATE CODE : ①②

①	MONTH	1 TO 9,X,Y,Z (X=10,Y=11,Z=12)
②	YEAR	0 TO 9 (EX: 7=2017)

8. CERTIFICATION: 

SILVER	SPST, NORMALLY OPEN	500,000 CYCLES, MINIMUM	6,000 CYCLES, MINIMUM	−40 TO +85°C/85% RELATIVE HUMIDITY MAXIMUM	−25 TO +75°C/60% RELATIVE HUMIDITY MAXIMUM	0.20 MAXIMUM	0.20 MINIMUM	6.9±0.3	0.50 MAXIMUM	0.05N MINIMUM	0.88N MAXIMUM	3 A, 125 VAC, 1.5 A, 250 VAC	MOMENTARY	SAJ13XXPP0N88SNOPTQ	2351444−6
	SPST, NORMALLY CLOSED													SAJ13XXPP0N88SNCPTQ	2351444−5
	SPDT													SAJ13XXPP0N88SDTPTQ	2351444−4
	SPST, NORMALLY OPEN	1,000,000 CYCLES, MINIMUM	30,000 CYCLES, MINIMUM							0.02N MINIMUM	0.75N MAXIMUM	0.1 A, 30 VDC		SAJ101XPP0N74SNOPTQ	2351444−3
	SPST, NORMALLY CLOSED													SAJ101XPP0N74SNCPTQ	2351444−2
	SPDT													SAJ101XPP0N74SDTPTQ	2351444−1
CONTACT FINISH	CONTACT FORM	MECHANICAL LIFE	ELECTRICAL LIFE	STORAGE TEMPERATURE RANGE/HUMIDITY RANGE	OPERATING TEMPERATURE RANGE/HUMIDITY RANGE	MOVEMENT DIFFERENTIAL	OVERTRAVEL	OPERATING POSITION	PRETRAVEL	RELEASE FORCE	OPERATING FORCE	RATING RESISTIVE LOAD	CONTACT CONFIGURATION	TE SMART PART NUMBER	PART NUMBER

PRELIMINARY

THIS DRAWING IS A CONTROLLED DOCUMENT.		DWN GANESH CM 09MAY2019	<div> TE Connectivity</div>									
		CHK ALEXANDER SHARPE 09MAY2019										
DIMENSIONS: mm	TOLERANCES UNLESS OTHERWISE SPECIFIED:	APVD ALEXANDER SHARPE 09MAY2019	NAME SWITCH, ULTRA SUBMINIATURE SNAP ACTION, PIN PLUNGER, PCB TERMINAL									
	0 PLC ± - 1 PLC ± - 2 PLC ± 0.4 3 PLC ± - 4 PLC ± - ANGLES ± -	PRODUCT SPEC —	SIZE A3				CAGE CODE 00779		DRAWING NO C=2351444		RESTRICTED TO —	
MATERIAL —	FINISH —	APPLICATION SPEC —										
		WEIGHT —										
CUSTOMER DRAWING			SCALE NTS		SHEET 4 of 4		REV 1					

Mouser Electronics

Authorized Distributor

Click to View Pricing, Inventory, Delivery & Lifecycle Information:

[TE Connectivity:](#)

[2351444-1](#)