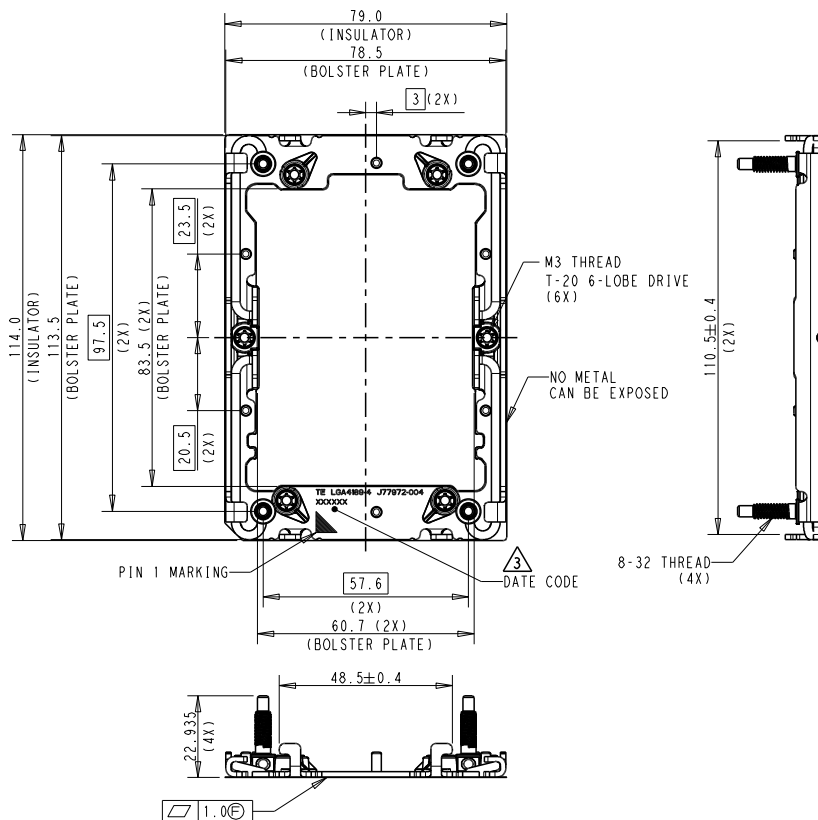
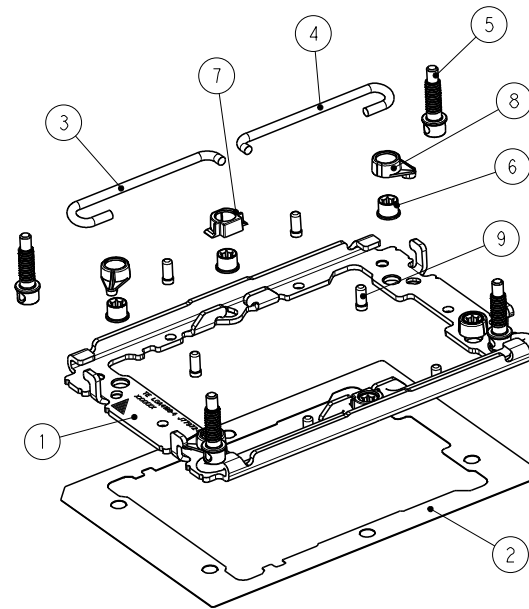
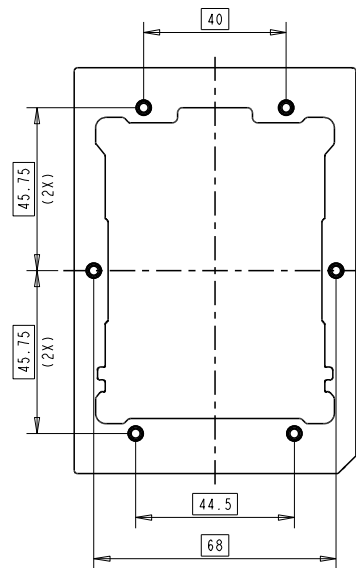


P/N: 2-2330550-1 AS SHOWN



NOTES:

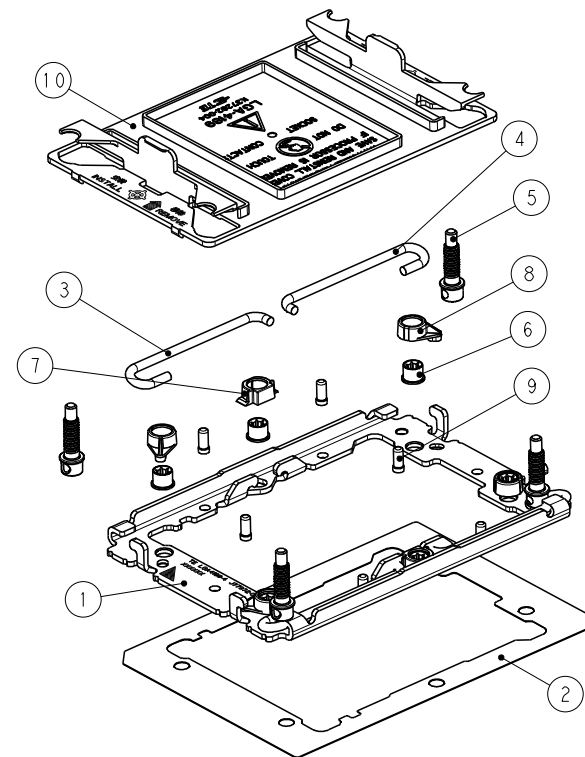
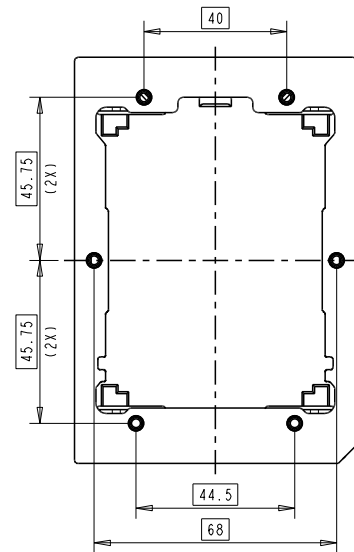
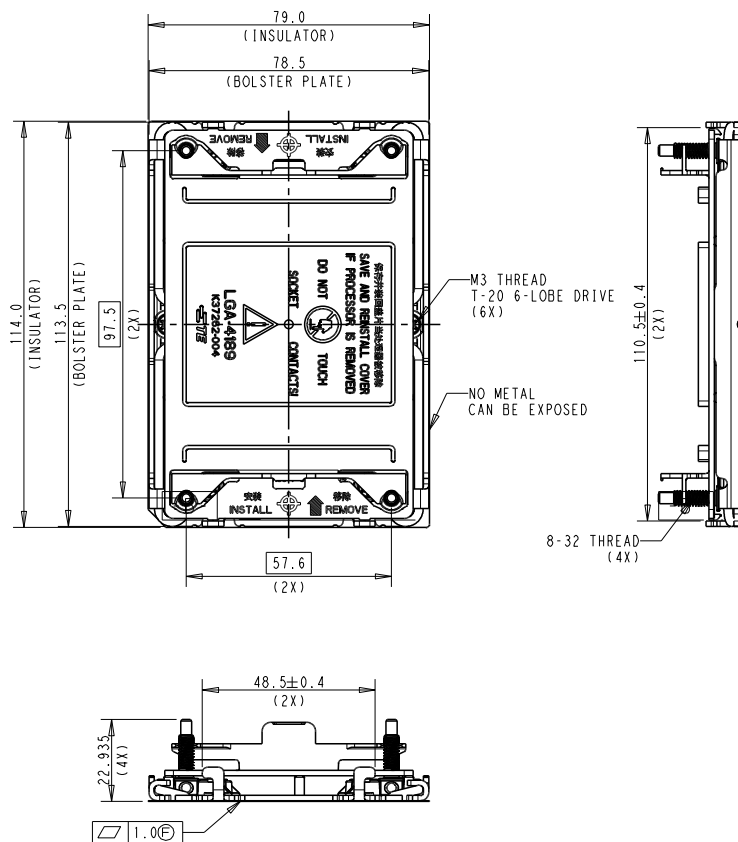
1. MATERIAL:
 - ① P4 TFLM BOLSTER PLATE: STAINLESS STEEL
 - ② P4 TFLM BOLSTER INSULATOR: -POLYCARBONATE FILM PLUS ACRYLIC ADHESIVE LAYER
 - ③ ICX TFLM SPRING-1: MUSIC WIRE, NICKEL PLATING
 - ④ ICX TFLM SPRING-2: MUSIC WIRE, NICKEL PLATING
 - ⑤ ICX TFLM SPRING STUD: STAINLESS STEEL
 - ⑥ ICX TFLM M3 NUT : CARBON STEEL, NICKEL PLATING
 - ⑦ ICX TFLM NUT CAP-SIDE: THERMO-PLASTIC, UL94V-0, BLACK
 - ⑧ ICX TFLM NUT CAP: THERMO-PLASTIC, UL94V-0, BLACK
 - ⑨ ICX TFLM WIRE STOP PIN: STAINLESS STEEL
2. ASSEMBLED WITH BACKPLATE ASSEMBLY P/N: 2330551 SERIES
3. INDICATED DATE CODE ON THE BOLSTER PLATE



6	ICX TFLM WIRE STOP PIN	9
4	ICX TFLM NUT CAP, BLACK	8
2	ICX TFLM NUT CAP, SIDE, BLACK	7
6	ICX TFLM M3 NUT	6
4	ICX TFLM SPRING STUD	5
2	ICX TFLM SPRING-2	4
2	ICX TFLM SPRING-1	3
1	P4 TFLM BOLSTER INSULATOR	2
1	P4 TFLM BOLSTER PLATE	1
Q'TY	DESCRIPTION	ITEM

THIS DRAWING IS A CONTROLLED DOCUMENT.		OWN: 08FEB2018 JEFF WANG	TE CONNECTIVITY	
DIMENSIONS:		CHK: 08FEB2018 BILL LV	NAME	
mm		APVO: 08FEB2018 SIMON LI	SOCKET P4 TFLM ASSY WITHOUT DUST COVER	
TOLERANCES UNLESS OTHERWISE SPECIFIED:		PRODUCT SPEC	SIZE	
0 PLC ±0.3		-	CAGE CODE	
1 PLC ±0.3		-	DRAWING NO	
2 PLC ±0.3		APPLICATION SPEC	RESTRICTED TO	
3 PLC ±0.3		-	A200779C-2330550	
4 PLC ±0.3		WEIGHT	SCALE	
ANGLES ±0.3		-	1:1	
FINISH		-	SHEET	
MATERIAL		-	1 OF 5	
-		-	REV	
-		-	B1	
-		-		
-		-		
CUSTOMER DRAWING				

P/N: 2-2330550-2 AS SHOW





NOTES:

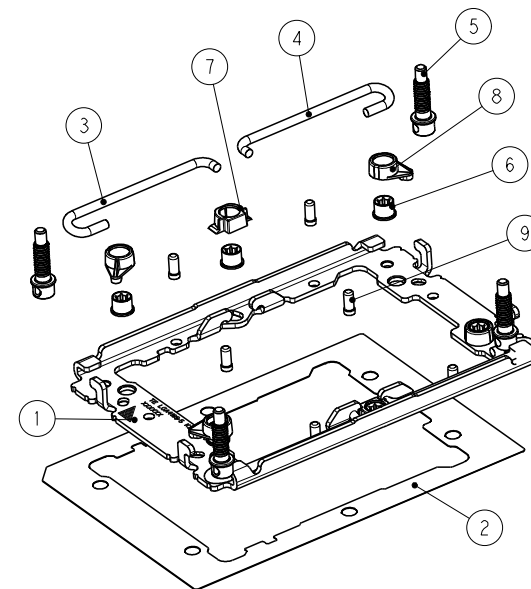
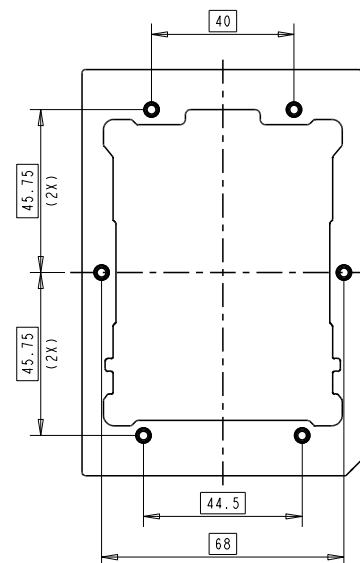
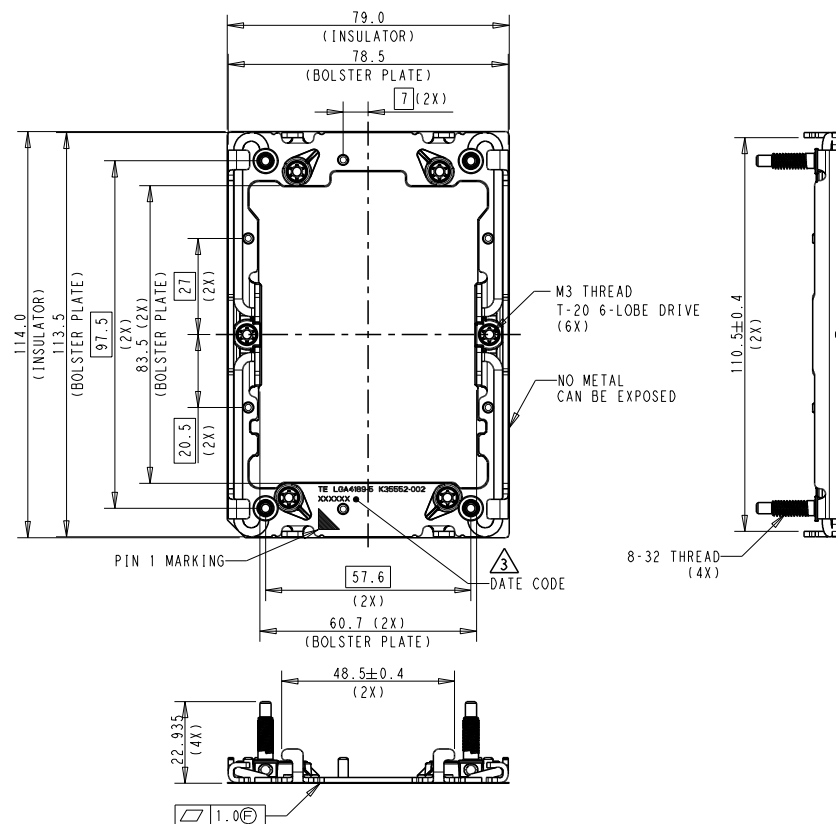
- MATERIAL:
 - P4 TFLM BOLSTER PLATE: STAINLESS STEEL
 - P4 TFLM BOLSTER INSULATOR: POLYCARBONATE FILM PLUS ACRYLIC ADHESIVE LAYER
 - ICX TFLM SPRING-1: MUSIC WIRE, NICKEL PLATING
 - ICX TFLM SPRING-2: MUSIC WIRE, NICKEL PLATING
 - ICX TFLM SPRING STUD: STAINLESS STEEL
 - ICX TFLM M3 NUT : CARBON STEEL, NICKEL PLATING
 - ICX TFLM NUT CAP-SIDE: THERMO-PLASTIC, UL94V-0, BLACK
 - ICX TFLM NUT CAP: THERMO-PLASTIC, UL94V-0, BLACK
 - ICX TFLM WIRE STOP PIN: STAINLESS STEEL
 - DUST COVER: PC+ABS, UL94V-0, GREY
- ASSEMBLED WITH BACKPLATE ASSEMBLY P/N: 2330551 SERIES
- BOLSTER ASSY WITH DUST COVER, ALL DIMENSIONS ARE THE SAME AS PN 2-2330550-1.

REVISIONS				
P	LTR	DESCRIPTION	DATE	OWN APVD
-	-	SEE SHEET 1	-	-

1	DUST COVER, GREY	10
6	ICX TFLM WIRE STOP PIN	9
4	ICX TFLM NUT CAP, BLACK	8
2	ICX TFLM NUT CAP, SIDE, BLACK	7
6	ICX TFLM M3 NUT	6
4	ICX TFLM SPRING STUD	5
2	ICX TFLM SPRING-2	4
2	ICX TFLM SPRING-1	3
1	P4 TFLM BOLSTER INSULATOR	2
1	P4 TFLM BOLSTER PLATE	1
Q'TY	DESCRIPTION	ITEM

THIS DRAWING IS A CONTROLLED DOCUMENT.		OWN: 08FEB2018	 TE Connectivity		
DIMENSIONS:		CHK: 08FEB2018			
TOLERANCES UNLESS OTHERWISE SPECIFIED:		APVD: 08FEB2018			
mm		NAME			
		PRODUCT SPEC	SOCKET P4 TFLM ASSY WITH DUST COVER		
0 PLC ±0.3 1 PLC ±0.3 2 PLC ±0.3 3 PLC ±0.3 4 PLC ±0.3		APPLICATION SPEC			
ANGLES ±3		SIZE	CAGE CODE	DRAWING NO	RESTRICTED
MATERIAL		WEIGHT	A200779		C-2330550
FINISH		CUSTOMER DRAWING		SCALE	SHEET
-		-		1:1	2 of 5
-		-		REV	5

P/N: 3-2330550-1 AS SHOW




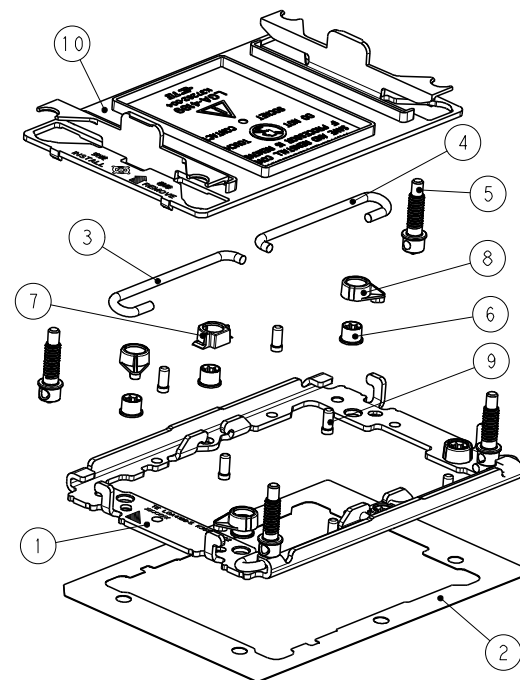
NOTES:

1. MATERIAL:
 - ① P5 TFLM BOLSTER PLATE: STAINLESS STEEL
 - ② P5 TFLM BOLSTER INSULATOR: -POLYCARBONATE FILM PLUS ACRYLIC ADHESIVE LAYER
 - ③ ICX TFLM SPRING-1: MUSIC WIRE, NICKEL PLATING
 - ④ ICX TFLM SPRING-2: MUSIC WIRE, NICKEL PLATING
 - ⑤ ICX TFLM SPRING STUD: STAINLESS STEEL
 - ⑥ ICX TFLM M3 NUT : CARBON STEEL, NICKEL PLATING
 - ⑦ ICX TFLM NUT CAP-SIDE: THERMO-PLASTIC, UL94V-0, GREY
 - ⑧ ICX TFLM NUT CAP: THERMO-PLASTIC, UL94V-0, GREY
 - ⑨ ICX TFLM WIRE STOP PIN: STAINLESS STEEL
2. ASSEMBLED WITH BACKPLATE ASSEMBLY P/N: 2330551 SERIES
3. INDICATED DATE CODE ON THE BOLSTER PLATE

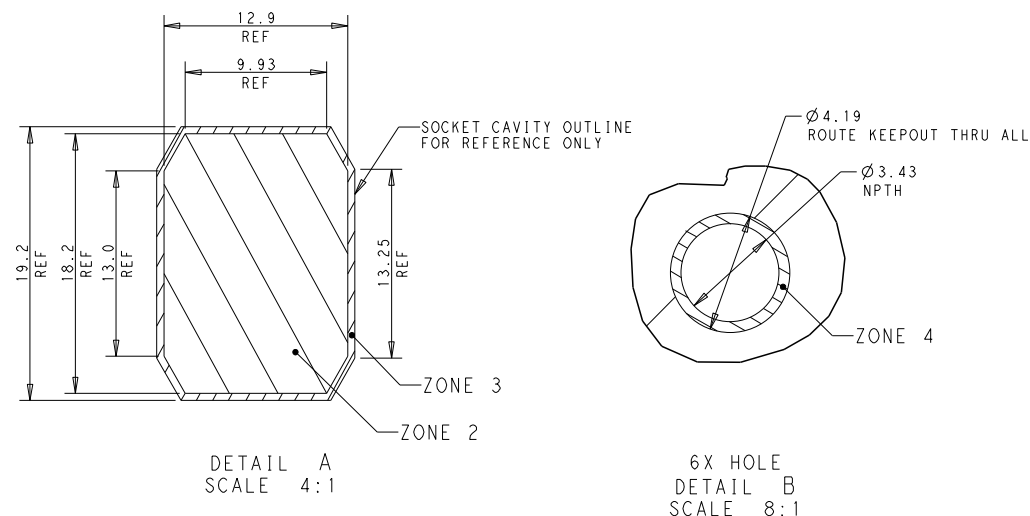
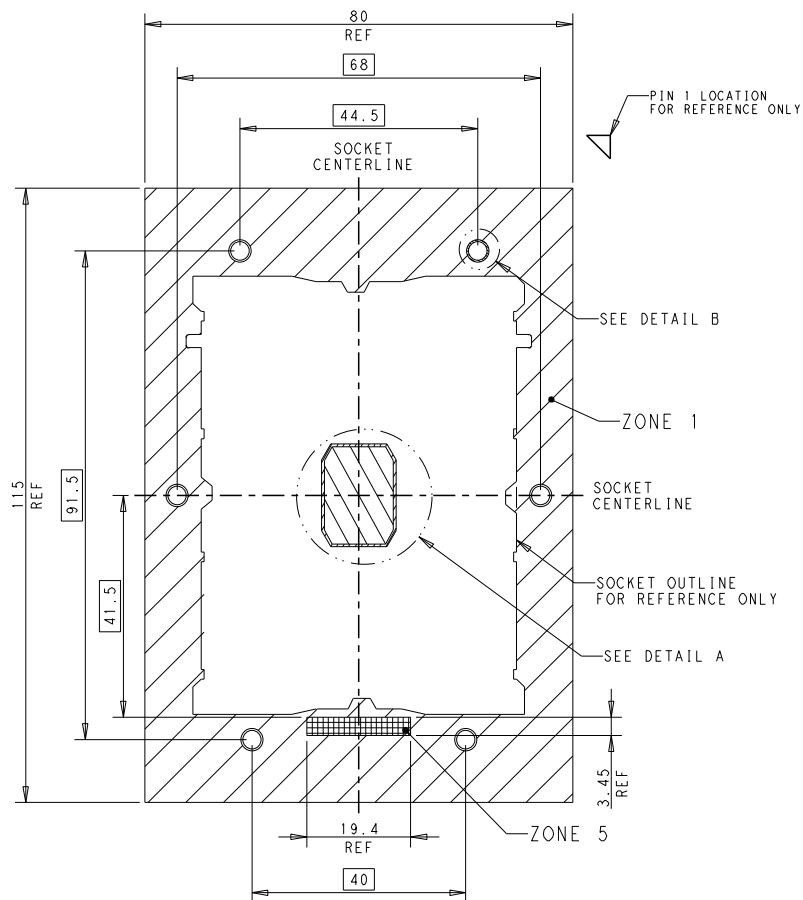
REVISIONS				
P	LTR	DESCRIPTION	DATE	OWN APVD
-	-	SEE SHEET 1	-	-

6	ICX TFLM WIRE STOP PIN	9
4	ICX TFLM NUT CAP, GREY	8
2	ICX TFLM NUT CAP, SIDE, GREY	7
6	ICX TFLM M3 NUT	6
4	ICX TFLM SPRING STUD	5
2	ICX TFLM SPRING-2	4
2	ICX TFLM SPRING-1	3
1	P5 TFLM BOLSTER INSULATOR	2
1	P5 TFLM BOLSTER PLATE	1
Q'TY	DESCRIPTION	ITEM

THIS DRAWING IS A CONTROLLED DOCUMENT.		OWN: 08FEB2018 JEFF WANG	TE		TE Connectivity	
DIMENSIONS:		CHK: 08FEB2018 BILL LV	NAME		SOCKET P5 TFLM ASSY WITHOUT DUST COVER	
TOLERANCES UNLESS OTHERWISE SPECIFIED:		APVD: 08FEB2018 SIMON LI	PRODUCT SPEC			
mm		APPLICATION SPEC				
		SIZE		CAGE CODE	DRAWING NO	RESTRICTED TO
MATERIAL		WEIGHT		A200779C-2330550		-
- - -		- - -		CUSTOMER DRAWING		SCALE 1:1 SHEET 3 OF 5 REV B1
0 PLC ±0.3 1 PLC ±0.3 2 PLC ±0.3 3 PLC ±0.3 4 PLC ±0.3		FINISH		-		-

1471-9 (3/13)

REVISIONS				
P	LTR	DESCRIPTION	DATE	OWN APVD
-	-	SEE SHEET 1	-	-



KOZ LEGEND	
	ZONE 1: BOLSTER PLATE ZONE, NO OTHER COMPONENT PLACEMENT ALLOWED, 0.0MM HEIGHT RESTRICTION
	ZONE 2: SOCKET CAVITY 1.222 MM MAX HEIGHT RESTRICTION
	ZONE 3: SOCKET CAVITY TO SOCKET ZONE NO OTHER COMPONENT PLACEMENT ALLOWED, 0.0MM HEIGHT RESTRICTION
	ZONE 4: NO ROUTE ZONE, THROUGH ALL LAYERS
	ZONE 5: PRIMARY SIDE COMPONENT PLACEMENT ZONE MAX. COMPONENT HEIGHT OF 1.5MM

REFERENCE BOLSTER KEEPOUT ZONE

FOR GENERAL BOARD DESIGN, PLEASE REFER TO THE THERMAL AND MECHANICAL DESIGN GUIDELINES PROVIDED BY INTEL

THIS DRAWING IS A CONTROLLED DOCUMENT.		OWN: JEFF WANG 08FEB2018	TE Connectivity	
DIMENSIONS: mm		CHK: BILL LV 08FEB2018		
		APVD: SIMON LI 08FEB2018	NAME: SOCKET P4/P5 TFLM KOZ	
		PRODUCT SPEC: -	SIZE: CAGE CODE: DRAWING NO: A200779 ©=2330550	
TOLERANCES UNLESS OTHERWISE SPECIFIED:		APPLICATION SPEC: -	RESTRICTED TO: -	
MATERIAL: -		WEIGHT: -	SCALE: 3:2 SHEET 5 OF 5 REV: B1	
FINISH: -		CUSTOMER DRAWING		

Mouser Electronics

Authorized Distributor

Click to View Pricing, Inventory, Delivery & Lifecycle Information:

[TE Connectivity:](#)

[2-2330550-2](#)