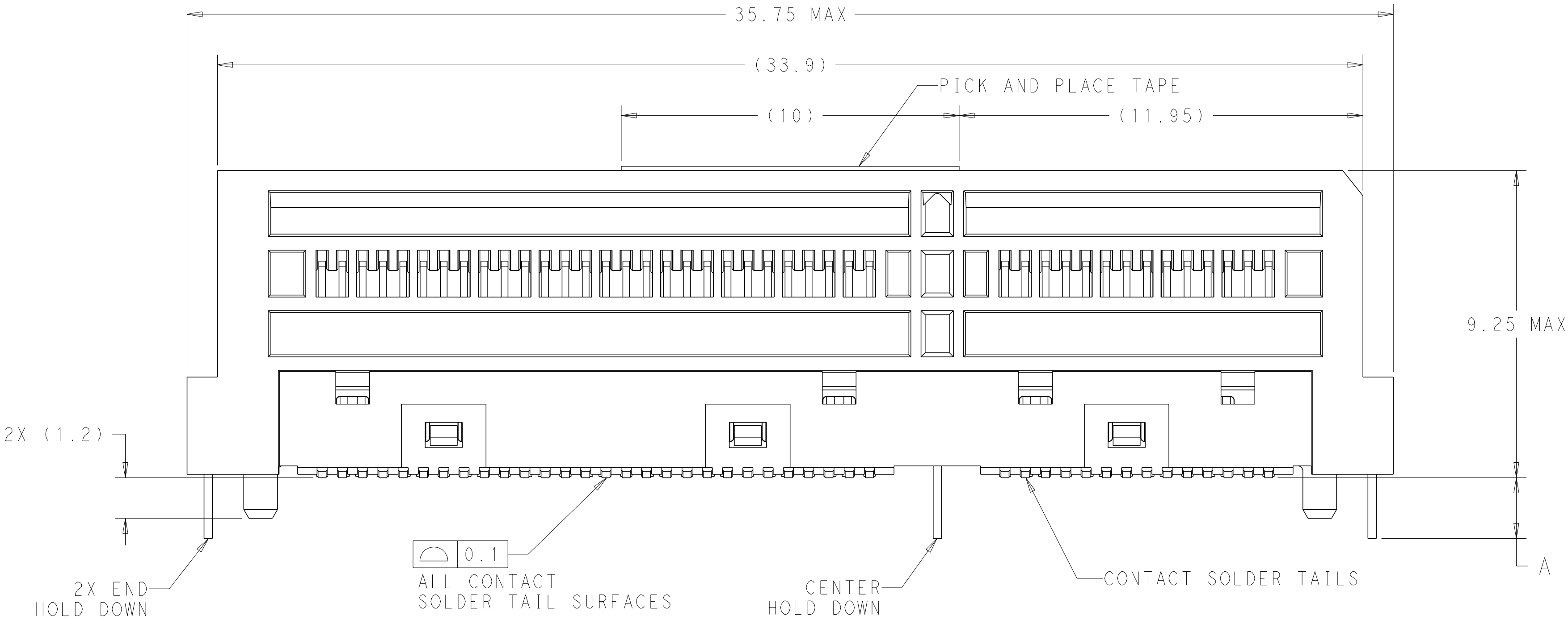
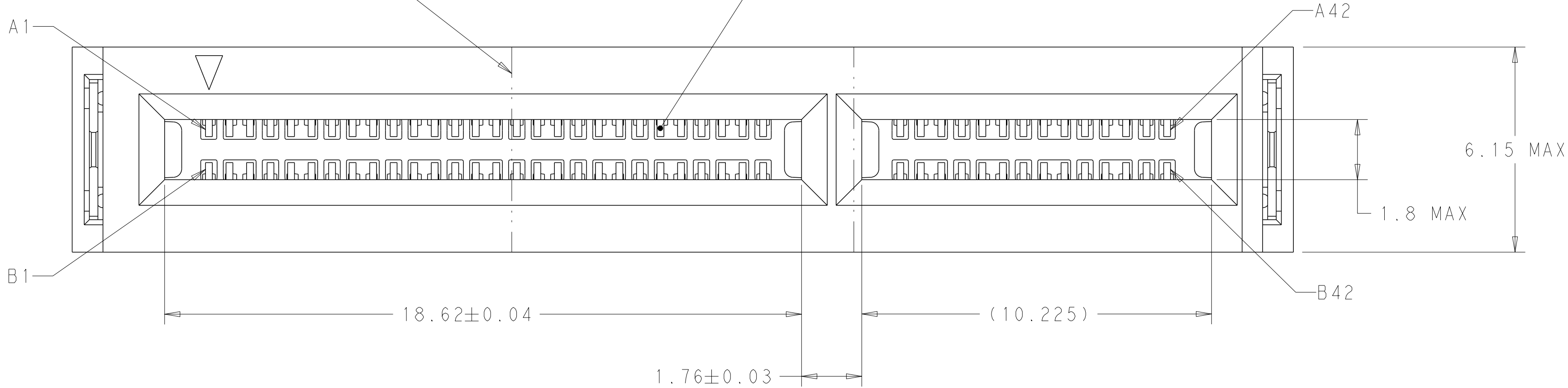


REVISIONS					
#	LYR	DESCRIPTION	DATE	DWN	APVD
A		RELEASED	11MAY2019	CJV	JW
B		REVISED PER ECO-19-011736	07AUG2019	AP	JW
C		REVISED PER ECO-20-015351	28OCT2020	TX	DZ

PICK AND PLACE TAPE SHOWN  
AS TRANSPARENT FOR CLARITY

CONTACT MATING SURFACES



△ HOUSING AND CONTACT OVERMOLDS - LCP, UL94-V0, BLACK.  
CONTACTS AND HOLD DOWNS - COPPER ALLOY.  
PICK AND PLACE TAPE - POLYIMIDE FILM.

△ CONTACTS - GOLD PLATE ON MATING SURFACES,  
TIN PLATE ON SOLDER FEET.  
HOLD DOWNS - TIN PLATE.

△ DATUMS AND BASIC DIMENSIONS ESTABLISHED BY CUSTOMER.

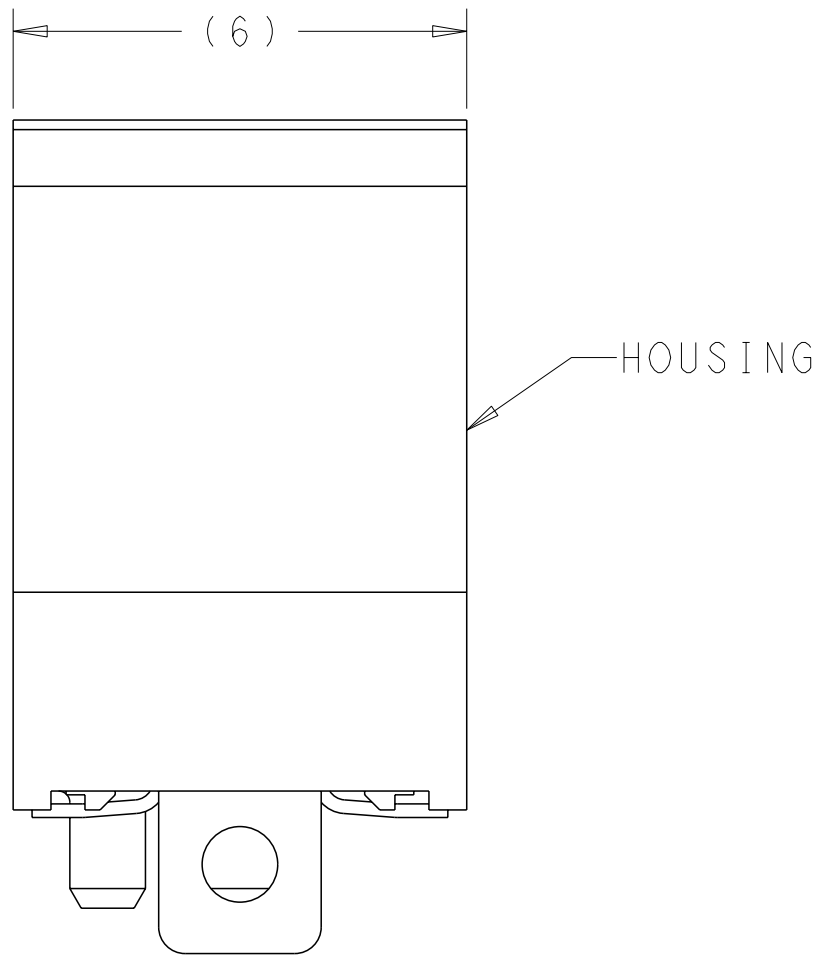
4. MINIMUM HOST PCB THICKNESS: 1.5.

△ SEE MSA SPECIFICATION FOR ADDITIONAL PADDLE CARD  
LAYOUTS COMPATABLE WITH THIS RECEPTACLE AND FOR  
OPTIONAL SPLIT CONTACT PAD LAYOUTS FOR THE  
PADDLE CARD. SPECIFICATION PINOUT MAY ALSO  
DESIGNATE PAD SEQUENCE DIFFERENT FROM ILLUSTRATION.

△ POSITIONS DESIGNATED AS "SIGNAL" ARE REQUIRED  
LOCATIONS FOR HIGH SPEED DIFFERENTIAL PAIR  
SIGNALING. THESE LOCATIONS MAY ALSO BE USED FOR  
SUPPORTING SIDEBAND SIGNALS OR OTHER UTILITY  
PURPOSES. POSITIONS DESIGNATED AS "GROUND" ARE  
REQUIRED WHEN SUPPORTING HIGH SPEED DIFFERENTIAL  
SIGNALS. THESE LOCATIONS MAY ALSO BE USED FOR  
SIDEBAND SIGNALS OR OTHER UTILITY PURPOSES.

△ COMPONENT AND TRACE KEEP OUT AREA. EACH EDGE  
0.15 MIN FROM EDGE OF HOLE.

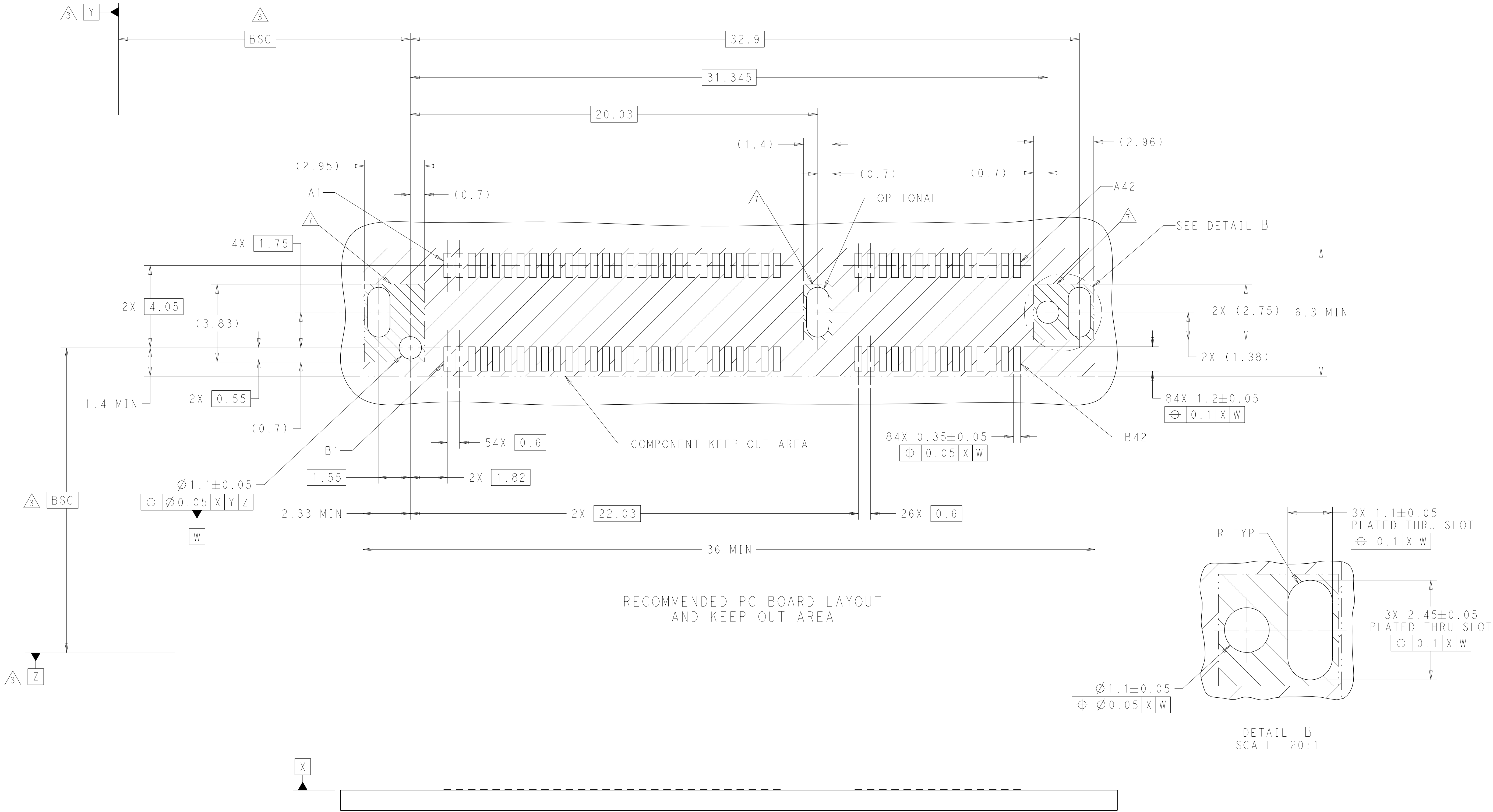
△ TAPE AND REEL PACKAGED FOR PICK AND PLACE SMT  
PROCESSING, SEE FIGURE 1. POCKET TAPE WIDTH = 56.



SEE SHEET 4  
FOR PART TABLE

THIS DRAWING IS A CONTROLLED DOCUMENT.		DWN C. VALENTINE 16JAN2018	TE Connectivity	
DIMENSIONS:		CHK D. HARMON 16JAN2018		
mm	TOLERANCES UNLESS OTHERWISE SPECIFIED:	APVD D. HARMON 16JAN2018	NAME	RECEPTACLE ASSEMBLY, VERTICAL, 84 POSITION, SLIVER 2.0
	0 PLC	±	PRODUCT SPEC	-
	1 PLC	±	108-130021	-
	2 PLC	±	APPLICATION SPEC	-
	3 PLC	±	114-130008	-
MATERIAL	ANGLES	FINISH	SIZE	CAGE CODE
△	△	△	A1	-
CUSTOMER DRAWING		WEIGHT	SCALE	10:1
			SHEET	1
			OF	4
			REV	C

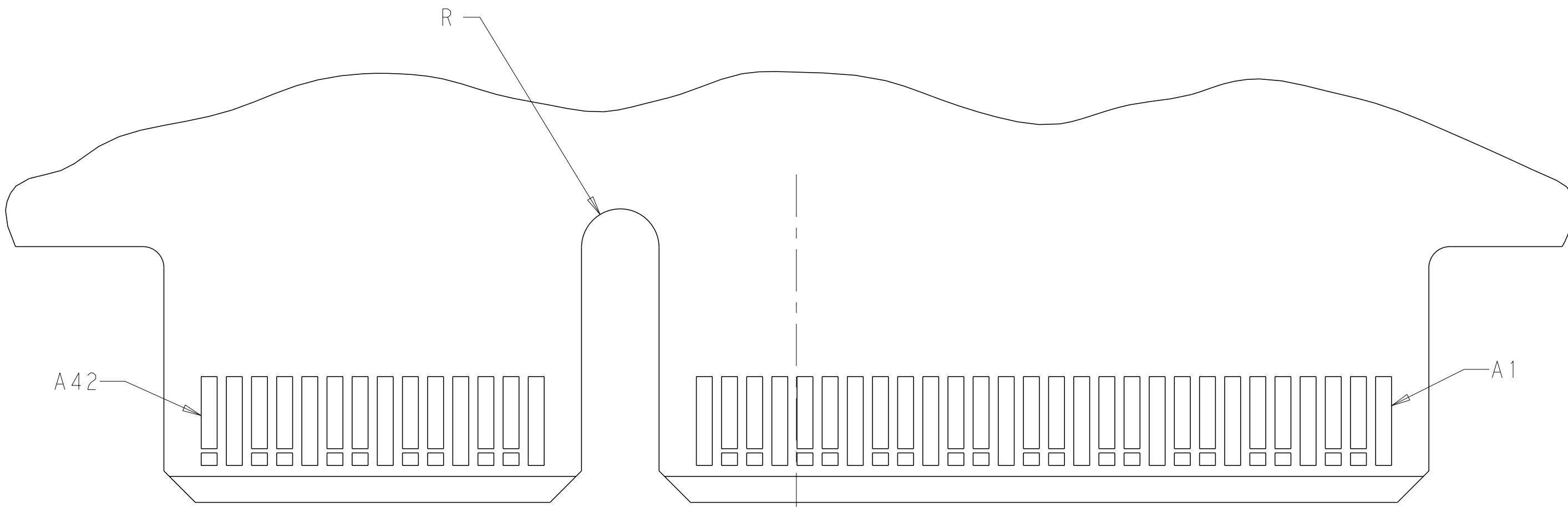
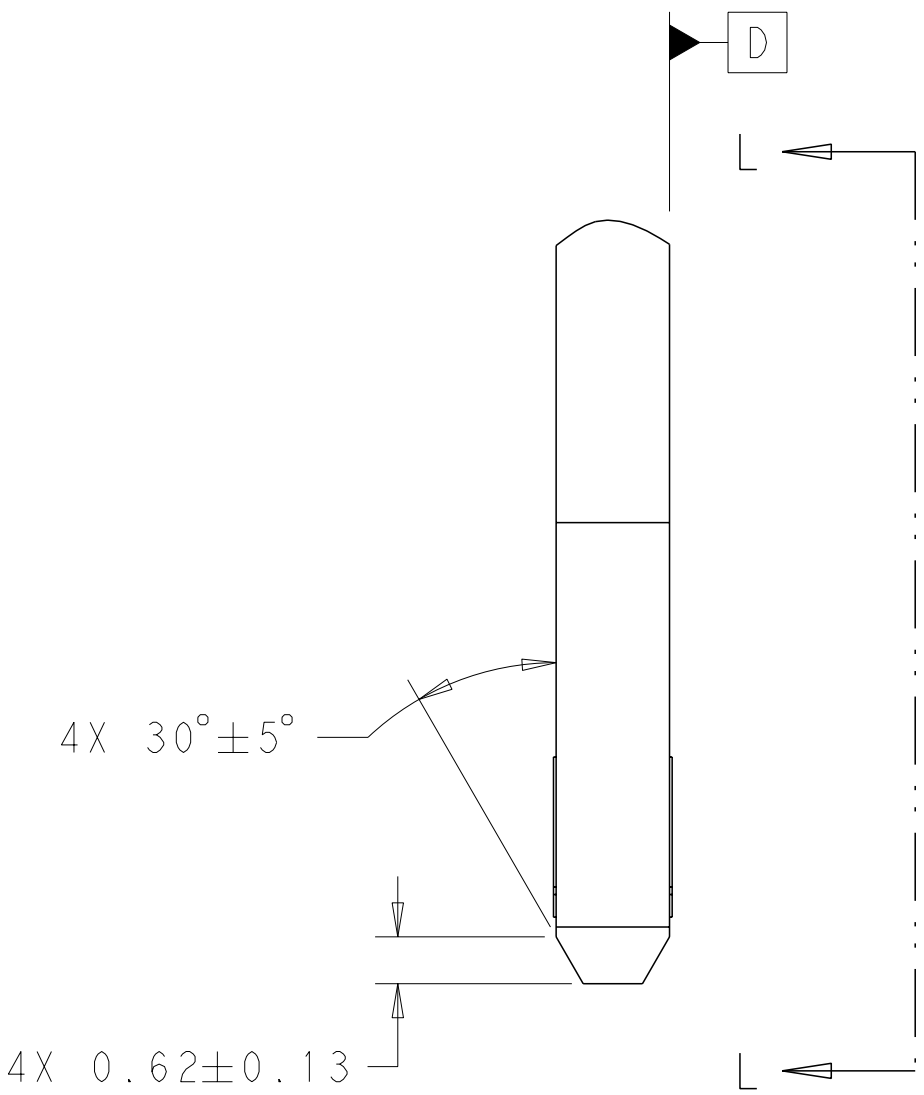
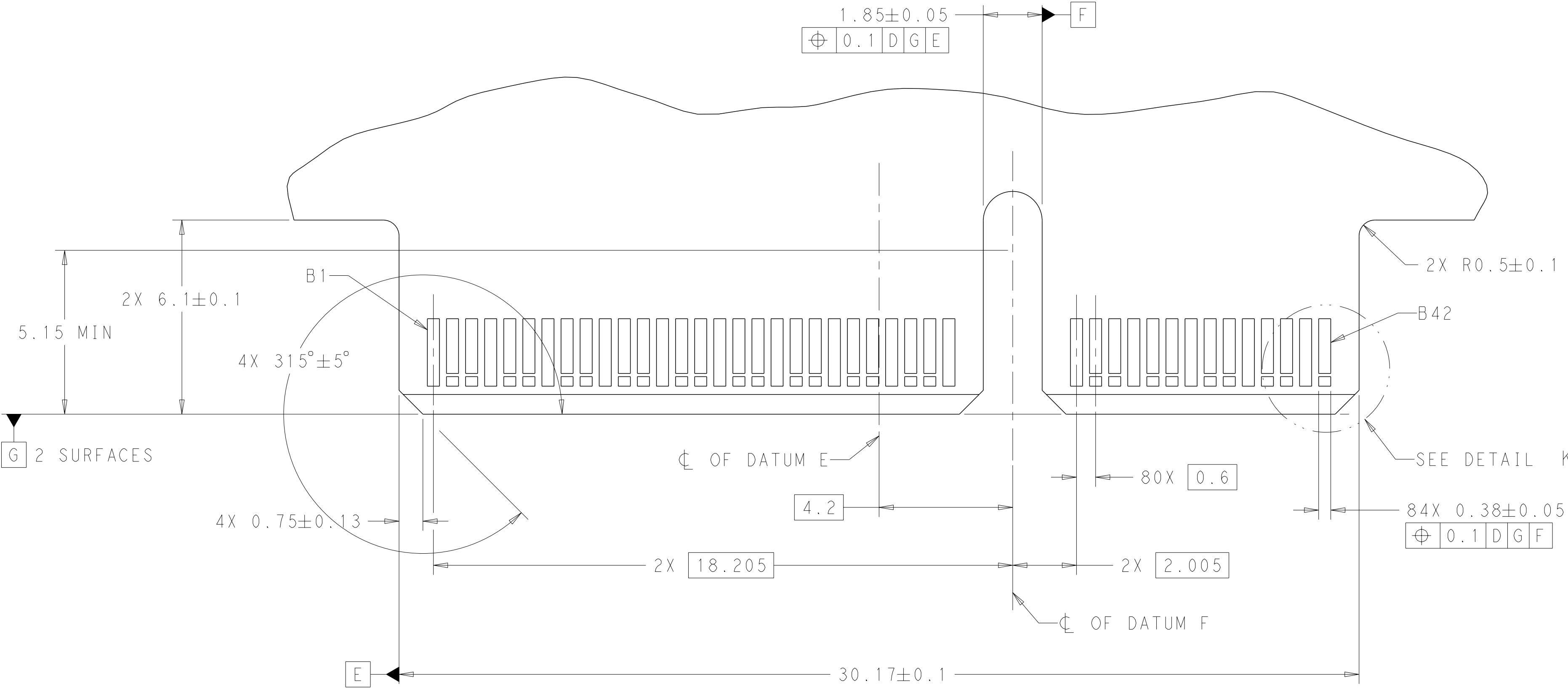
REVISIONS					
P	LYR	DESCRIPTION	DATE	DWN	APVD
	-	SEE SHEET 1	-	-	-



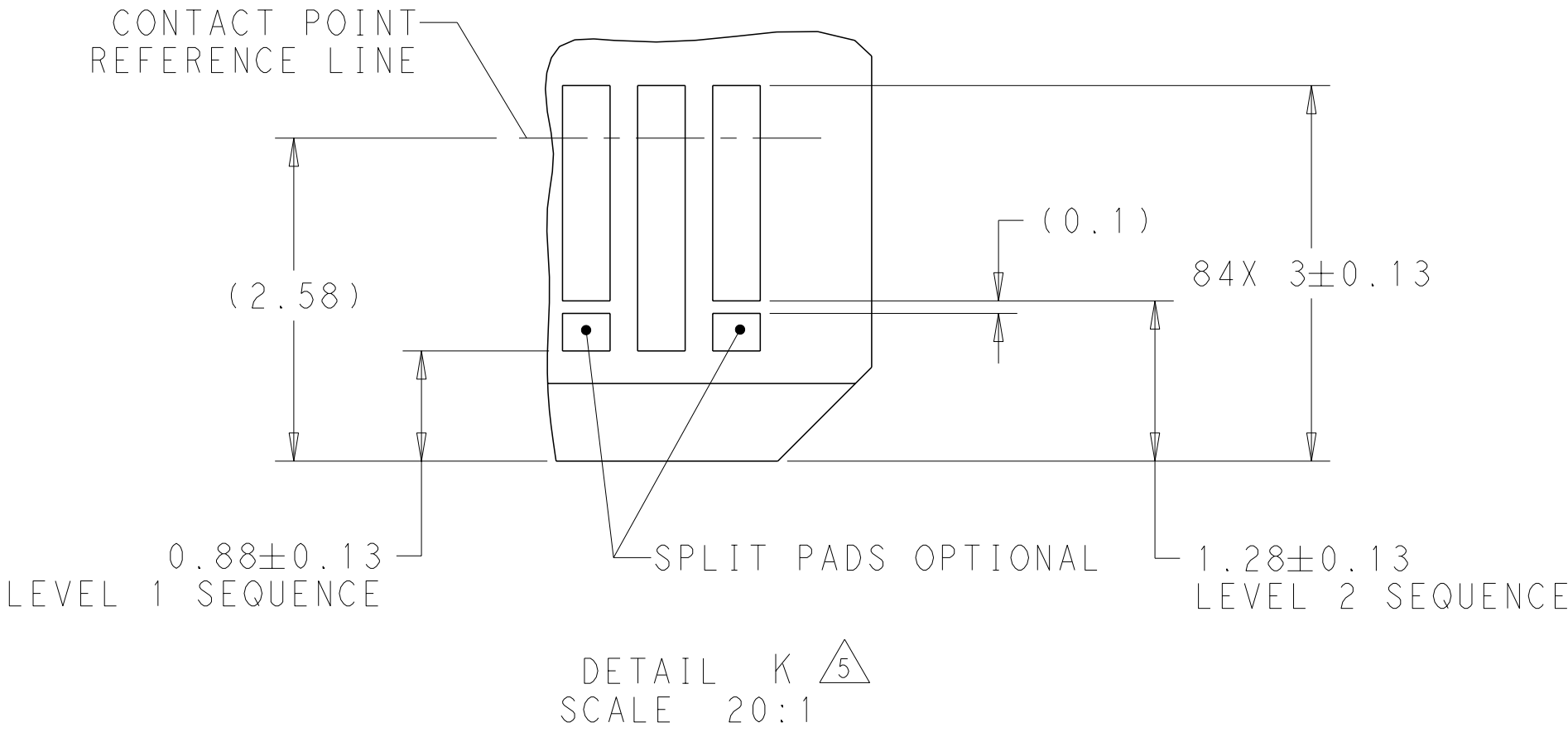
THIS DRAWING IS A CONTROLLED DOCUMENT.		DWN C. VALENTINE 16 JAN 2018	TE Connectivity	
DIMENSIONS: mm		CHK D. HARMON 16 JAN 2018		
	0 PLC	±	NAME RECEPTACLE ASSEMBLY, VERTICAL, 84 POSITION, SLIVER 2.0	
	1 PLC	±	PRODUCT SPEC	
	2 PLC	±	108-130021	
	3 PLC	±	APPLICATION SPEC	
MATERIAL	4 PLC	±	114-130008	
	ANGLES	±	114-130008	
FINISH		±	114-130008	
WEIGHT		-	114-130008	
CUSTOMER DRAWING		SCALE 10:1	SHEET 2 OF 4	REV C

REVISIONS					
#	LYR	DESCRIPTION	DATE	DWN	APVD
	-	SEE SHEET 1	-	-	-

RECOMMENDED PCB OUTLINE DIMENSIONS.  
TOLERANCE VALUES ARE CRITICAL. PLEASE BE SURE TO DESIGNATE  
TOLERANCES TO PCB SUPPLIER TO ENSURE OPTIMIZED FUNCTIONALITY.



VIEW L-L



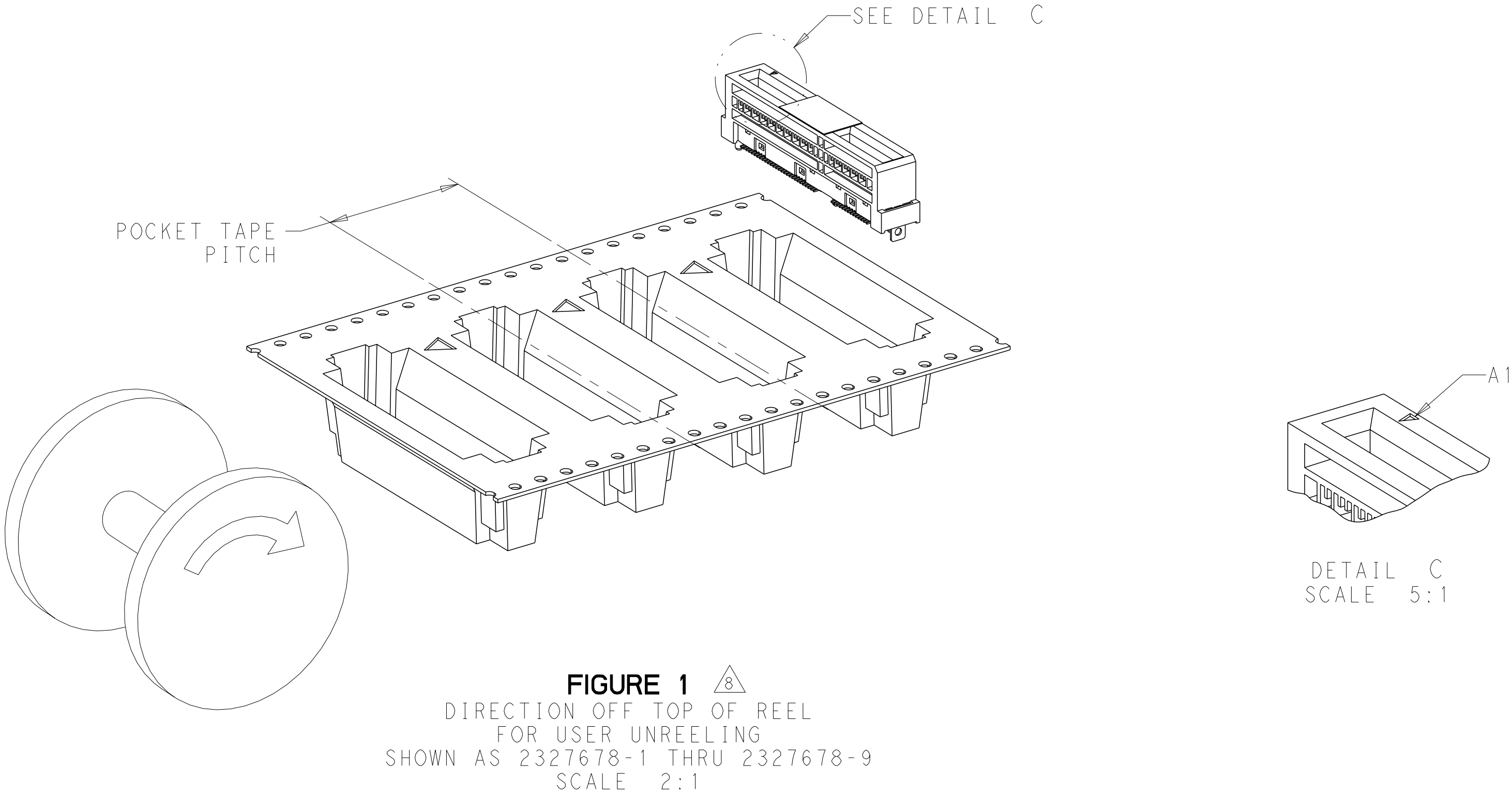
DETAIL K  
SCALE 20:1

THIS DRAWING IS A CONTROLLED DOCUMENT.		DWN C. VALENTINE 16 JAN 2018	TE Connectivity	
DIMENSIONS:		CHK D. HARMON 16 JAN 2018		
mm	TOLERANCES UNLESS OTHERWISE SPECIFIED:	APVD D. HARMON 16 JAN 2018	NAME RECEPTACLE ASSEMBLY, VERTICAL, 84 POSITION, SLIVER 2.0	
	0 PLC ±	PRODUCT SPEC	SIZE	
	1 PLC ±	108-130021	CAGE CODE	
	2 PLC ±	APPLICATION SPEC	DRAWING NO	
	3 PLC ±	114-130008	RESTRICTED TO	
MATERIAL	4 PLC ±	WEIGHT	A1	
	ANGLES	-	©=2327678	
FINISH		CUSTOMER DRAWING	SCALE 10:1	
			SHEET 3 OF 4	
			REV C	

REVISIONS					
#	LYR	DESCRIPTION	DATE	DWN	APVD
	-	SEE SHEET 1	-	-	-

TABLE 1: CONNECTOR CONTACT IDENTIFICATION 56

CONTACT NUMBER	SIDE A	SIDE B
1	GROUND	GROUND
2	SIGNAL	SIGNAL
3	SIGNAL	SIGNAL
4	GROUND	GROUND
5	SIGNAL	SIGNAL
6	SIGNAL	SIGNAL
7	GROUND	GROUND
8	SIGNAL	SIGNAL
9	SIGNAL	SIGNAL
10	GROUND	GROUND
11	SIGNAL	SIGNAL
12	SIGNAL	SIGNAL
13	GROUND	GROUND
14	SIGNAL	SIGNAL
15	SIGNAL	SIGNAL
16	GROUND	GROUND
17	SIGNAL	SIGNAL
18	SIGNAL	SIGNAL
19	GROUND	GROUND
20	SIGNAL	SIGNAL
21	SIGNAL	SIGNAL
22	GROUND	GROUND
23	SIGNAL	SIGNAL
24	SIGNAL	SIGNAL
25	GROUND	GROUND
26	SIGNAL	SIGNAL
27	SIGNAL	SIGNAL
28	GROUND	GROUND
29	GROUND	GROUND
30	SIGNAL	SIGNAL
31	SIGNAL	SIGNAL
32	GROUND	GROUND
33	SIGNAL	SIGNAL
34	SIGNAL	SIGNAL
35	GROUND	GROUND
36	SIGNAL	SIGNAL
37	SIGNAL	SIGNAL
38	GROUND	GROUND
39	SIGNAL	SIGNAL
40	SIGNAL	SIGNAL
41	GROUND	GROUND
42	GROUND	GROUND



3.0±0.1	ALL	0.76µm Au	20	250	YES	200	3-2327678-3
1.2±0.1	ENDS	0.76µm Au	24	250	NO	200	1-2327678-9
		0.38µm Au				100	1-2327678-8
		FLASH Au/PdNi				50	1-2327678-7
1.8±0.1	ENDS	0.76µm Au	24	250	NO	200	1-2327678-6
		0.38µm Au				100	1-2327678-5
		FLASH Au/PdNi				50	1-2327678-4
1.8±0.1	ALL	0.76µm Au	24	250	NO	200	1-2327678-3
		0.38µm Au				100	1-2327678-2
		FLASH Au/PdNi				50	1-2327678-1
1.2±0.1	ENDS	0.76µm Au	20	350	YES	200	2327678-9
		0.38µm Au				100	2327678-8
		FLASH Au/PdNi				50	2327678-7
1.8±0.1	ENDS	0.76µm Au	20	350	YES	200	2327678-6
		0.38µm Au				100	2327678-5
		FLASH Au/PdNi				50	2327678-4
1.8±0.1	ALL	0.76µm Au	20	350	YES	200	2327678-3
		0.38µm Au				100	2327678-2
		FLASH Au/PdNi				50	2327678-1
A	HOLD DOWNS	PLATING	POCKET TAPE PITCH	REEL QUANTITY	PICK AND PLACE TAPE	MATING CYCLES	PART NUMBER

# Mouser Electronics

Authorized Distributor

Click to View Pricing, Inventory, Delivery & Lifecycle Information:

[TE Connectivity:](#)

[2327678-2](#)