

REVISIONS					
P	LTR	DESCRIPTION	DATE	DWN	APVD
A		RELEASED	15MAY2019	CJV	JW
B		REVISED PER ECO-19-011736	06AUG2019	AP	JW
C		REVISED PER ECO-20-016913	01DEC2020	TX	DZ

1. HOUSING, ORGANIZER, CONTACT OVERMOLDS - LCP, UL94-V0, BLACK.
CONTACTS AND HOLD DOWNS - COPPER ALLOY.
PICK AND PLACE TAPE - POLYIMIDE FILM.
2. CONTACTS - GOLD PLATE ON MATING SURFACES,
TIN PLATE ON SOLDER FEET.
HOLD DOWNS - TIN PLATE.
3. DATUMS AND BASIC DIMENSIONS ESTABLISHED BY CUSTOMER.
4. MINIMUM HOST PCB THICKNESS: 1.5.
5. SEE MSA SPECIFICATION FOR ADDITIONAL PADDLE CARD LAYOUTS
COMPATABLE WITH THIS RECEPTACLE AND FOR OPTIONAL SPLIT
CONTACT PAD LAYOUTS FOR THE PADDLE CARD. SPECIFICATION
PINOUT MAY ALSO DESIGNATE PAD SEQUENCE DIFFERENT FROM
ILLUSTRATION.
6. POSITIONS DESIGNATED AS "SIGNAL" ARE REQUIRED LOCATIONS FOR
HIGH SPEED DIFFERENTIAL PAIR SIGNALING. THESE LOCATIONS
MAY ALSO BE USED FOR SUPPORTING SIDEBAND SIGNALS OR OTHER
UTILITY PURPOSES. POSITIONS DESIGNATED AS "GROUND" ARE
REQUIRED WHEN SUPPORTING HIGH SPEED DIFFERENTIAL SIGNALS.
THESE LOCATIONS MAY ALSO BE USED FOR SIDEBAND SIGNALS OR
OTHER UTILITY PURPOSES.
7. COMPONENT AND TRACE KEEP OUT AREA. EACH EDGE 0.15 MIN FROM
EDGE OF HOLE.
8. TAPE AND REEL PACKAGED FOR PICK AND PLACE SMT PROCESSING,
SEE FIGURE 1. POCKET TAPE WIDTH = 56.

SEE SHEET 4
FOR PART TABLE

THIS DRAWING IS A CONTROLLED DOCUMENT.		DWN M. SHIRK 22FEB2018	TE Connectivity	
DIMENSIONS:		CHK D. HARMON 22FEB2018		
mm		APVD D. HARMON 22FEB2018	NAME RECEPTACLE ASSEMBLY, RIGHT ANGLE, 84 POSITION, SILVER 2.0	
TOLERANCES UNLESS OTHERWISE SPECIFIED:		PRODUCT SPEC	SIZE A1	
0 PLC ±		108-130021	CAGE CODE -	
1 PLC ±		APPLICATION SPEC	DRAWING NO. C=2327671	
2 PLC ±		114-130008	RESTRICTED TO -	
3 PLC ±		WEIGHT -	SCALE 10:1	
4 PLC ±		CUSTOMER DRAWING	SHEET 1 OF 5	
ANGLES ±			REV C	
FINISH				

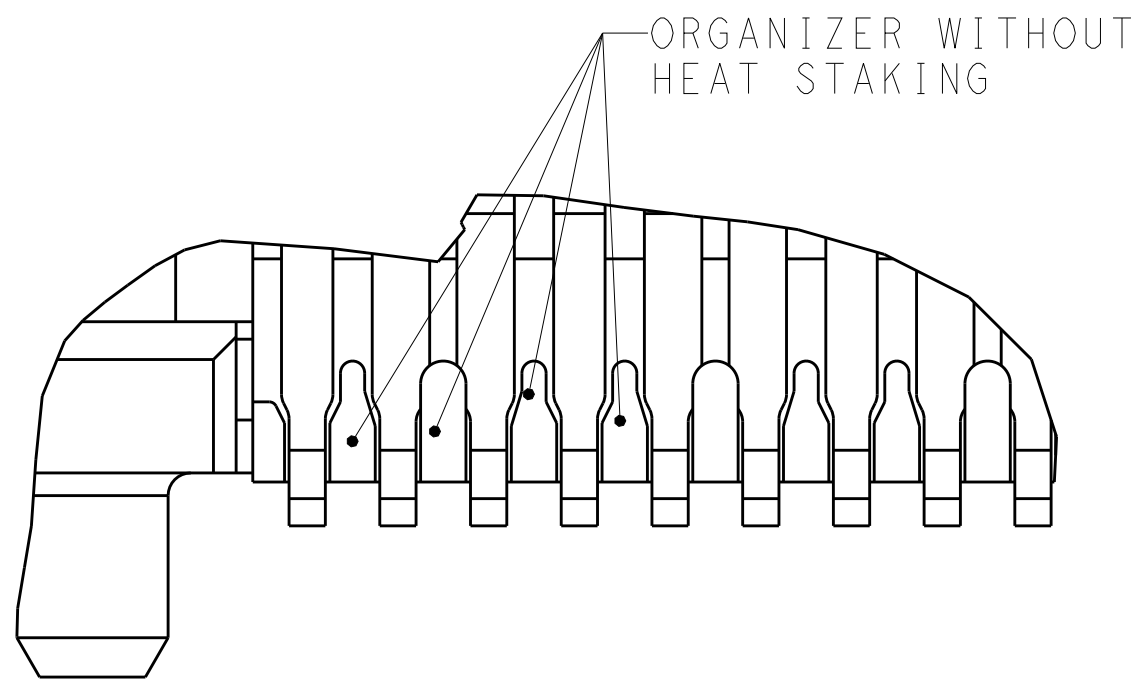
REVISIONS					
P.	LTR.	DESCRIPTION	DATE	DWN	APVD

D

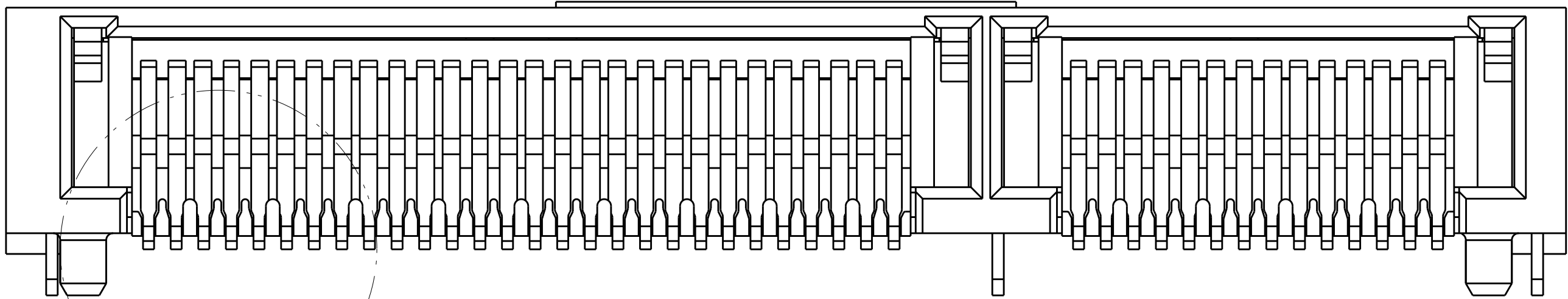
C

B

A

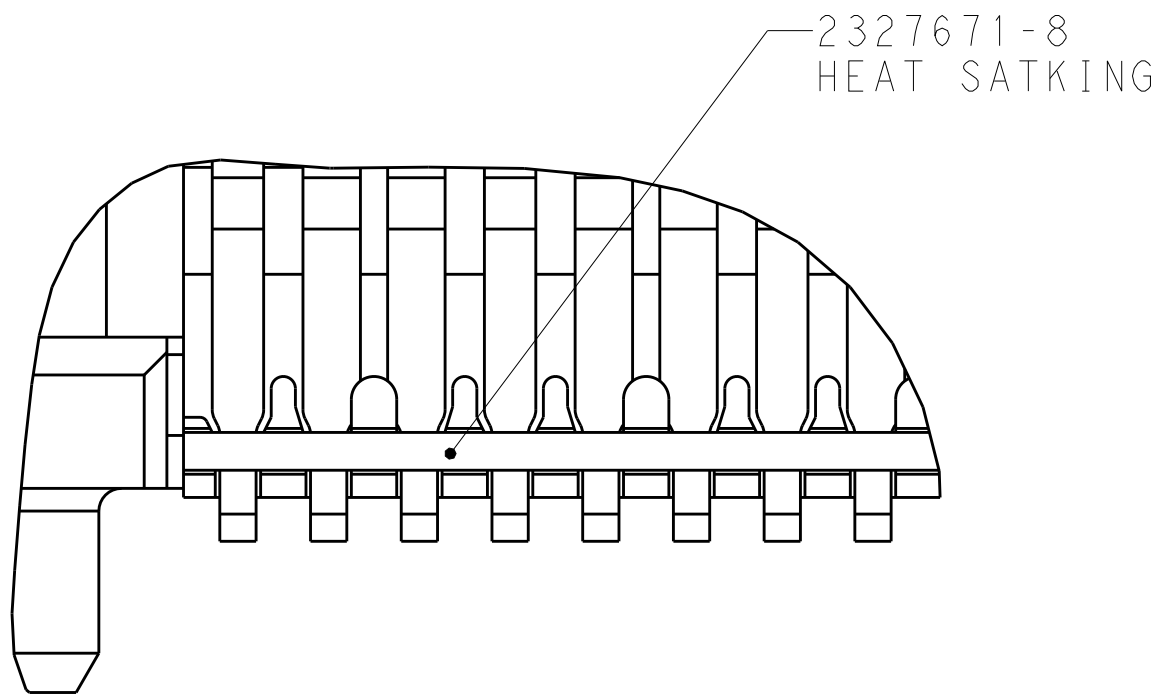


DETAIL B
SCALE 20:1

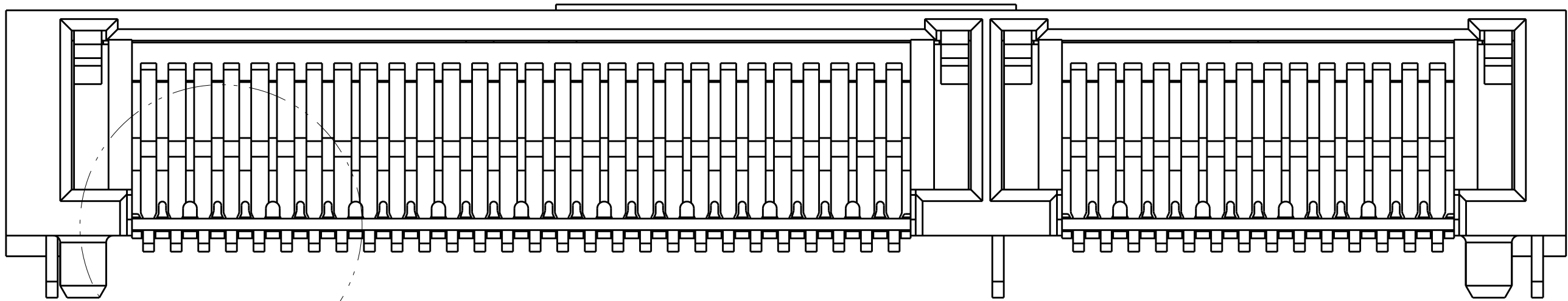


2327671-1 TO 2327671-6
1-2327671-1 TO 1-2327671-6
SCALE 10:1

SEE DETAIL B





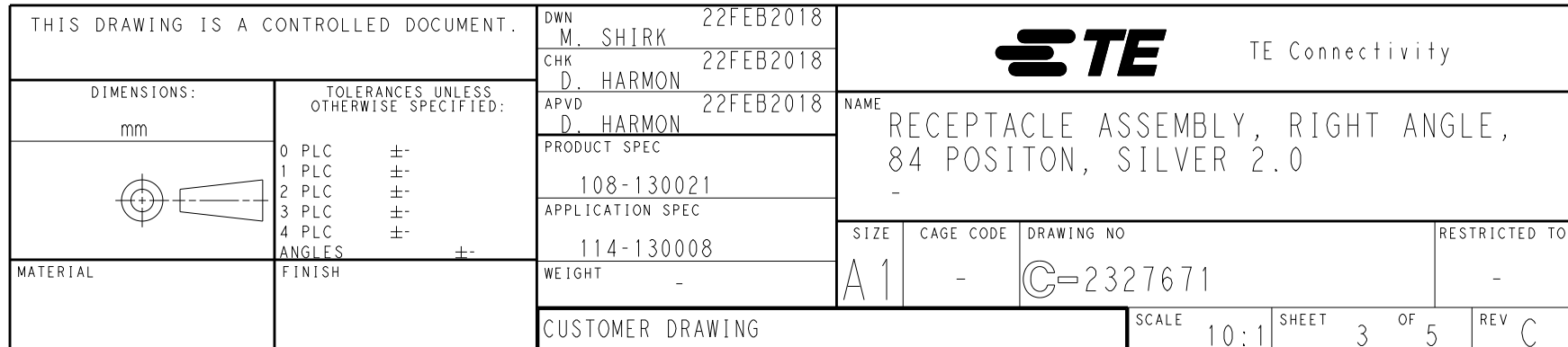
DETAIL C
SCALE 20:1



2327671-8
SCALE 10:1

SEE DETAIL C

THIS DRAWING IS A CONTROLLED DOCUMENT.			DWN		 TE Connectivity				
DIMENSIONS:			CHK						
			TOLERANCES UNLESS OTHERWISE SPECIFIED:		NAME				
			0 PLC ±		PRODUCT SPEC				
			1 PLC ±		APPLICATION SPEC				
			2 PLC ±						
			3 PLC ±						
MATERIAL			4 PLC ±		SIZE		CAGE CODE	DRAWING NO	RESTRICTED TO
			ANGLES ±		A 1		C		
			FINISH		WEIGHT				



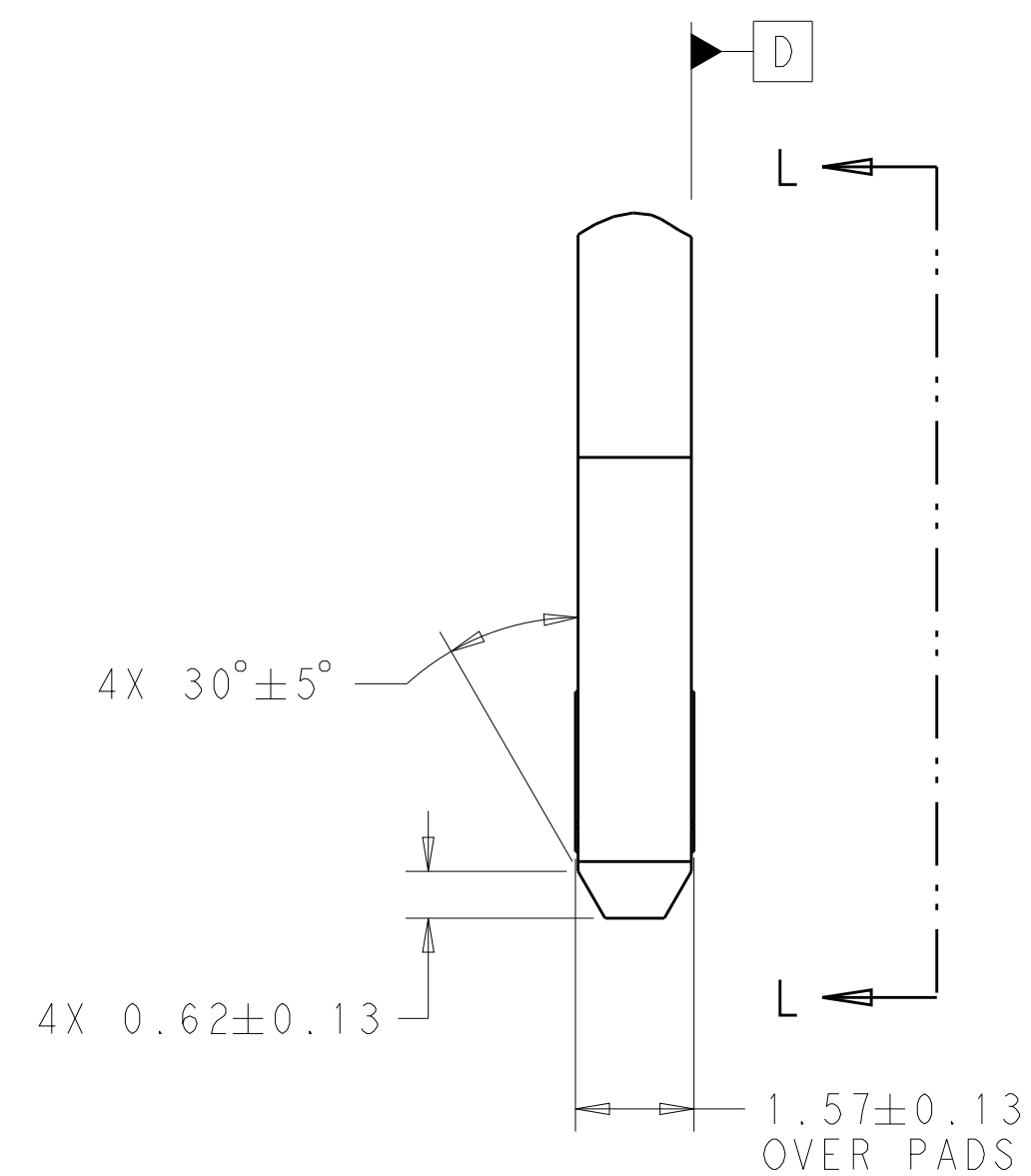
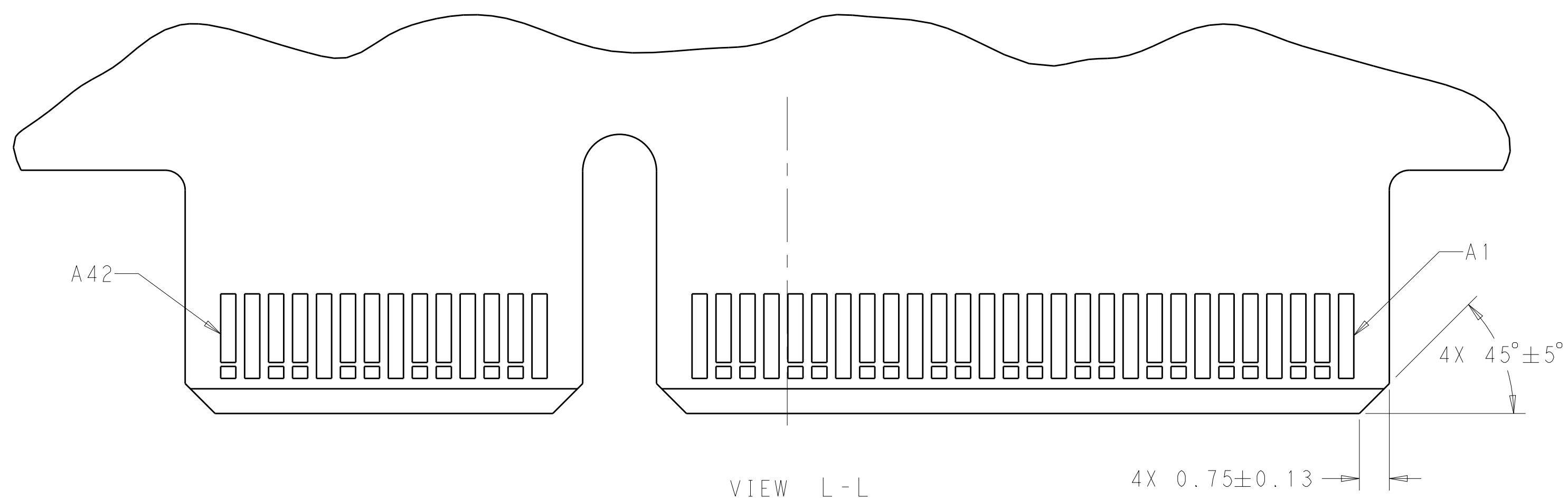


Diagram illustrating the dimensions and components of a 3.5mm stereo jack plug:

- CONTACT POINT REFERENCE LINE**: Indicated by a horizontal line across the top of the plug.
- LEVEL 1 SEQUENCE**: Dimensioned as 0.88 ± 0.13 mm, measured from the bottom of the plug to the top of the first contact point.
- LEVEL 2 SEQUENCE**: Dimensioned as 1.28 ± 0.13 mm, measured from the bottom of the plug to the top of the second contact point.
- OPTIONAL SPLIT PADS**: Indicated by arrows pointing to the two small rectangular features on the side of the plug.
- 84X 3 ± 0.13** : Dimensioned as $84 \times 3 \pm 0.13$ mm, measured from the top of the plug to the top of the second contact point.
- (0.1)**: Dimensioned as (0.1) mm, measured from the top of the plug to the top of the first contact point.
- (2.58)**: Dimensioned as (2.58) mm, measured from the top of the plug to the top of the second contact point.

4805 (3/13)

REVISIONS					
P	LTR	DESCRIPTION	DATE	DWN	APVD
-	-	SEE SHEET 1	-	-	-

TABLE 1: CONNECTOR CONTACT IDENTIFICATION 

CONTACT NUMBER	SIDE A	SIDE B
1	GROUND	GROUND
2	SIGNAL	SIGNAL
3	SIGNAL	SIGNAL
4	GROUND	GROUND
5	SIGNAL	SIGNAL
6	SIGNAL	SIGNAL
7	GROUND	GROUND
8	SIGNAL	SIGNAL
9	SIGNAL	SIGNAL
10	GROUND	GROUND
11	SIGNAL	SIGNAL
12	SIGNAL	SIGNAL
13	GROUND	GROUND
14	SIGNAL	SIGNAL
15	SIGNAL	SIGNAL
16	GROUND	GROUND
17	SIGNAL	SIGNAL
18	SIGNAL	SIGNAL
19	GROUND	GROUND
20	SIGNAL	SIGNAL
21	SIGNAL	SIGNAL
22	GROUND	GROUND
23	SIGNAL	SIGNAL
24	SIGNAL	SIGNAL
25	GROUND	GROUND
26	SIGNAL	SIGNAL
27	SIGNAL	SIGNAL
28	GROUND	GROUND
29	GROUND	GROUND
30	SIGNAL	SIGNAL
31	SIGNAL	SIGNAL
32	GROUND	GROUND
33	SIGNAL	SIGNAL
34	SIGNAL	SIGNAL
35	GROUND	GROUND
36	SIGNAL	SIGNAL
37	SIGNAL	SIGNAL
38	GROUND	GROUND
39	SIGNAL	SIGNAL
40	SIGNAL	SIGNAL
41	GROUND	GROUND
42	GROUND	GROUND

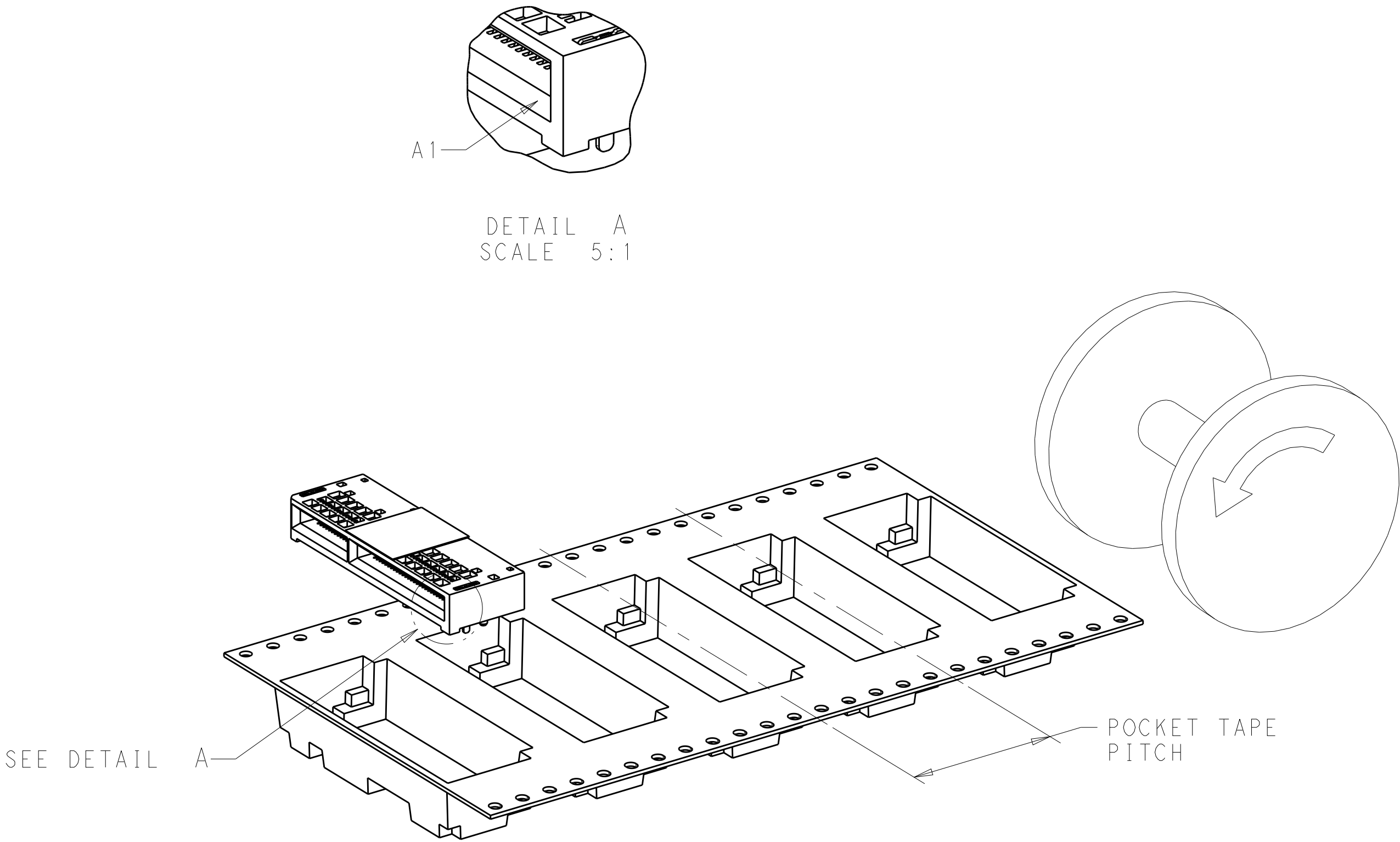


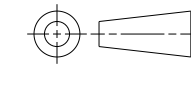


FIGURE 1 
DIRECTION OFF TOP OF REEL
FOR USER UNREELING
SHOWN AS 2327671-1 THRU 2327671-6
SCALE 2:1

ENDS	0.76µm Au	24	400	NO	200	1-2327671-6
ENDS	0.38µm Au				100	1-2327671-5
ENDS	FLASH Au/PdNi				50	1-2327671-4
ALL	0.76µm Au	24	400	NO	200	1-2327671-3
ALL	0.38µm Au				100	1-2327671-2
ALL	FLASH Au/PdNi				50	1-2327671-1
ALL	0.76µm Au	20	500	YES	200	2327671-8
ENDS	0.76µm Au	20	500	YES	200	2327671-6
ENDS	0.38µm Au				100	2327671-5
ENDS	FLASH Au/PdNi				50	2327671-4
ALL	0.76µm Au	20	500	YES	200	2327671-3
ALL	0.38µm Au				100	2327671-2
ALL	FLASH Au/PdNi				50	2327671-1
HOLD DOWNS	PLATING	POCKET TAPE PITCH	REEL QUANTITY	PICK AND PLACE TAPE	MATING CYCLES	PART NUMBER

THIS DRAWING IS A CONTROLLED DOCUMENT.		DWN M. SHIRK 22FEB2018	 TE Connectivity	
DIMENSIONS:		CHK D. HARMON 22FEB2018		
mm	TOLERANCES UNLESS OTHERWISE SPECIFIED:	APVD D. HARMON 22FEB2018	NAME RECEPTACLE ASSEMBLY, RIGHT ANGLE, 84 POSITON, SILVER 2.0	
	0 PLC ±" 1 PLC ±" 2 PLC ±" 3 PLC ±" 4 PLC ±" ANGLES ±" FINISH	PRODUCT SPEC 108-130021 APPLICATION SPEC 114-130008 WEIGHT -		
MATERIAL		SIZE A1 CAGE CODE - DRAWING NO. C=2327671	RESTRICTED TO -	
CUSTOMER DRAWING			SCALE 10:1	SHEET 5 OF 5 REV C

Mouser Electronics

Authorized Distributor

Click to View Pricing, Inventory, Delivery & Lifecycle Information:

[TE Connectivity:](#)

[2327671-1](#)