

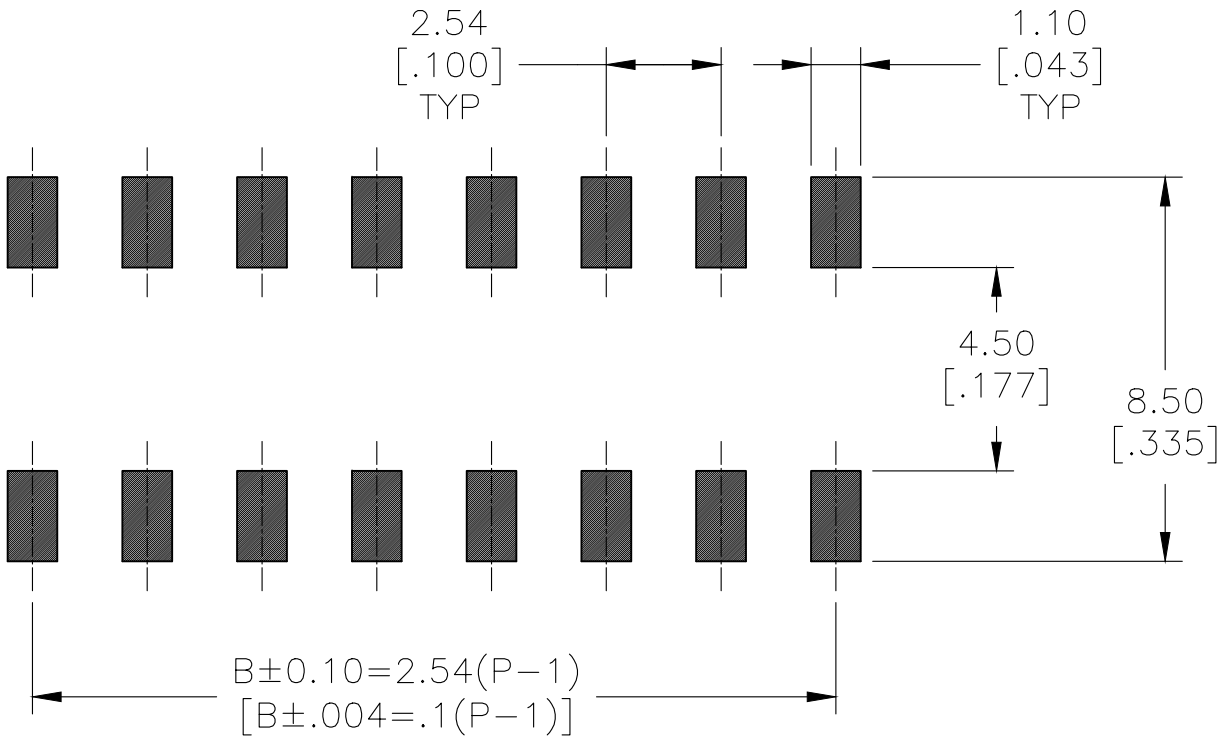
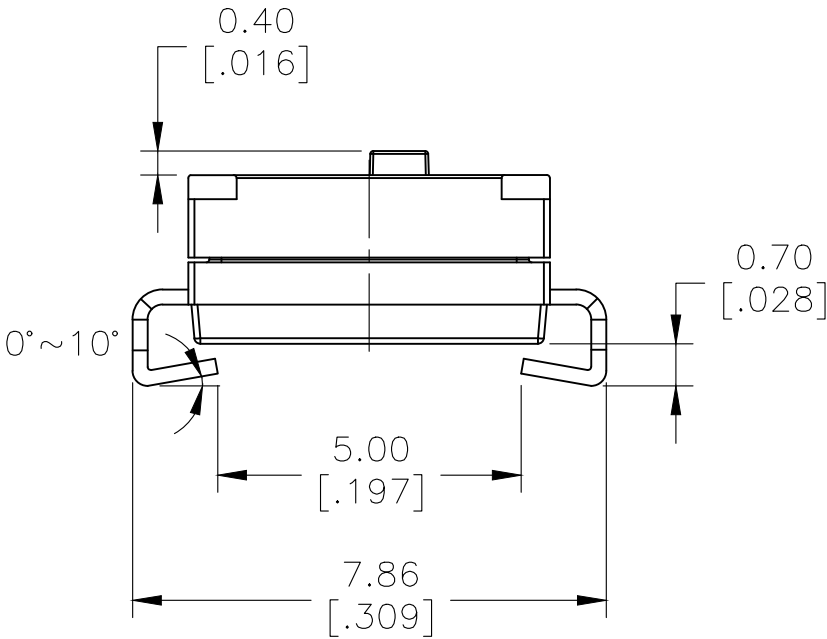
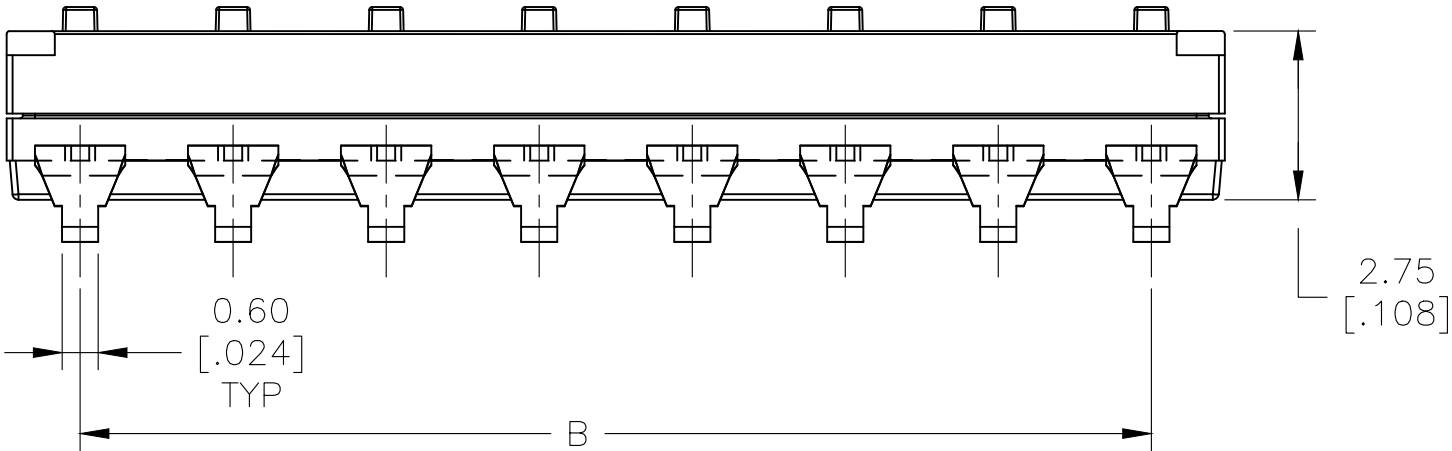
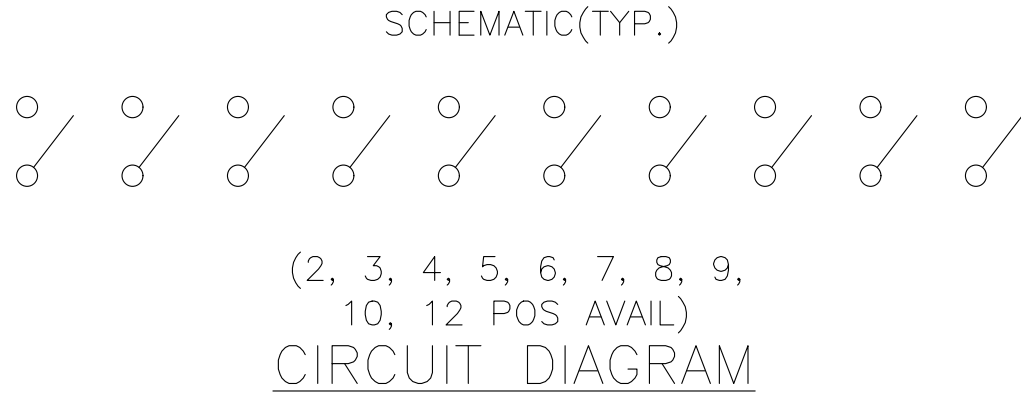
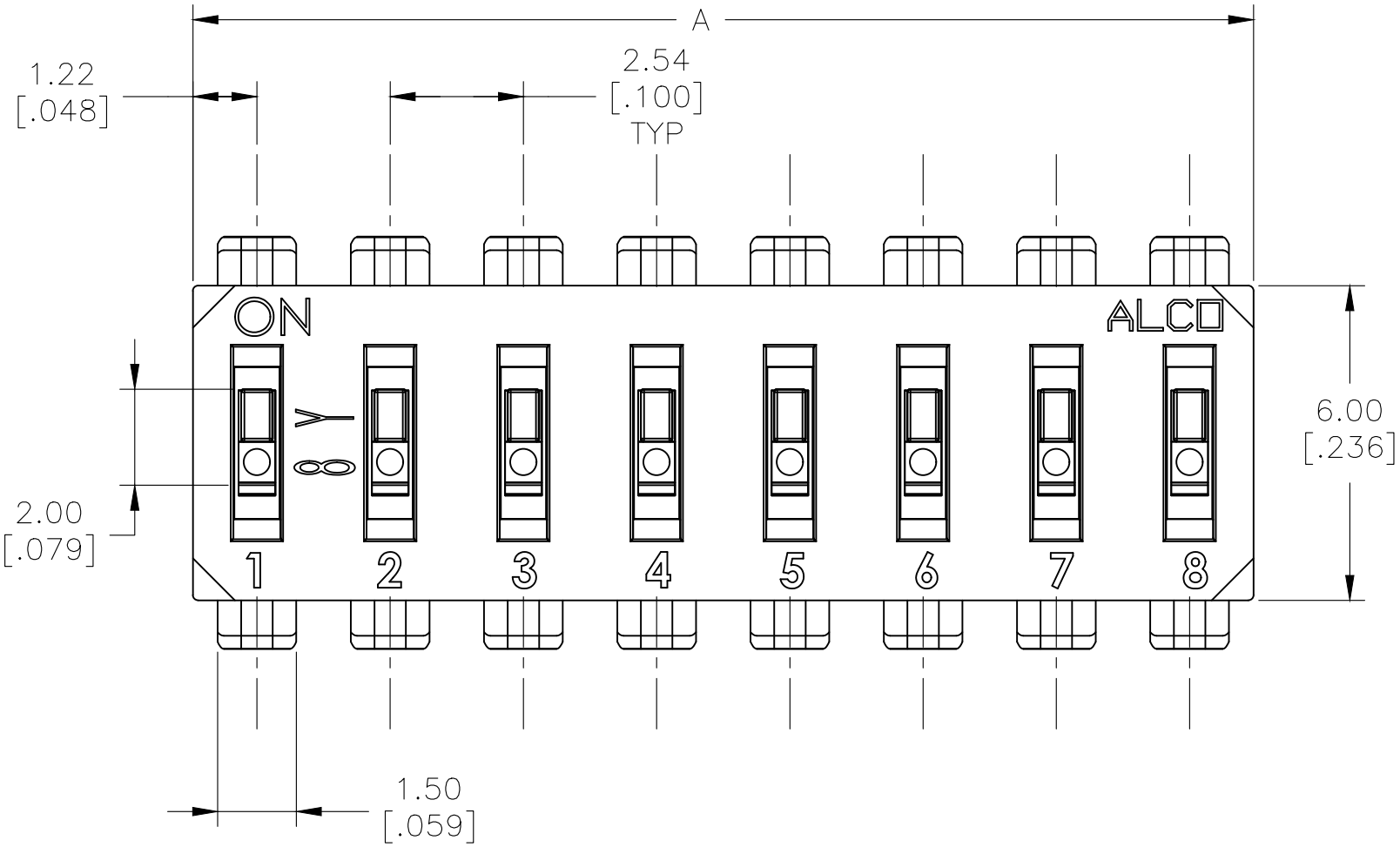


## P.C.B. LAYOUT

THIS DRAWING IS A CONTROLLED DOCUMENT.		DWN 29MAY2017 SHIVAKUMAR S S		 TE Connectivity				
		CHK 12MAY2017 ALEXANDER SHARPE						
DIMENSIONS: mm[INCHES]		TOLERANCES UNLESS OTHERWISE SPECIFIED:		NAME		END STACKABLE DIP SWITCHES RAISED ACTUATOR —		
		APVD 29MAY2017 ALEXANDER SHARPE		PRODUCT SPEC				
		—		APPLICATION SPEC				
		—		—				
MATERIAL		FINISH		SIZE		CAGE CODE	DRAWING NO	RESTRICTED TO
—		—		A2		00779	C-2319847	—
CUSTOMER DRAWING				SCALE		SHEET		REV
				1:1		1 of 4		A1

P	LTR	DESCRIPTION	DATE	DWN	APVD
	-	SEE SHEET 1	-	-	-

J SERIES RAISED ACTUATOR



THIS DRAWING IS A CONTROLLED DOCUMENT.		DWN SHIVAKUMAR S S 29MAY2017	TE Connectivity			
DIMENSIONS: mm[INCHES]		CHK ALEXANDER SHARPE 12MAY2017				
		APVD ALEXANDER SHARPE 29MAY2017	NAME END STACKABLE DIP SWITCHES RAISED ACTUATOR			
		PRODUCT SPEC	—			
MATERIAL —		APPLICATION SPEC	—			
		WEIGHT	SIZE A2	CAGE CODE 00779	DRAWING NO C-2319847	RESTRICTED TO —
FINISH —		CUSTOMER DRAWING	SCALE 1:1	SHEET 2 OF 4	REV A1	

REVISIONS					
P	LTR	DESCRIPTION	DATE	DWN	APVD
	-	SEE SHEET 1	-	-	-

<div>3</div>	J	27.94 [1.100]	30.38 [1.196]	12	EDS12SNNNTR04Q	4-2319847-2
		22.86 [.900]	25.3 [.996]	10	EDS10SNNNTR04Q	4-2319847-1
		20.32 [.800]	22.76 [.896]	09	EDS09SNNNTR04Q	4-2319847-0
		17.78 [.700]	20.22 [.796]	08	EDS08SNNNTR04Q	3-2319847-9
		15.24 [.600]	17.68 [.696]	07	EDS07SNNNTR04Q	3-2319847-8
		12.70 [.500]	15.14 [.596]	06	EDS06SNNNTR04Q	3-2319847-7
		10.16 [.400]	12.60 [.496]	05	EDS05SNNNTR04Q	3-2319847-6
		7.62 [.300]	10.06 [.396]	04	EDS04SNNNTR04Q	3-2319847-5
		5.08 [.200]	7.52 [.296]	03	EDS03SNNNTR04Q	3-2319847-4
		2.54 [.100]	4.98 [.196]	02	EDS02SNNNTR04Q	3-2319847-3
	M	27.94 [1.100]	30.38 [1.196]	12	EDS12SGNNTR04Q	3-2319847-2
		22.86 [.900]	25.3 [.996]	10	EDS10SGNNTR04Q	3-2319847-1
		20.32 [.800]	22.76 [.896]	09	EDS09SGNNTR04Q	3-2319847-0
		17.78 [.700]	20.22 [.796]	08	EDS08SGNNTR04Q	2-2319847-9
		15.24 [.600]	17.68 [.696]	07	EDS07SGNNTR04Q	2-2319847-8
		12.70 [.500]	15.14 [.596]	06	EDS06SGNNTR04Q	2-2319847-7
		10.16 [.400]	12.60 [.496]	05	EDS05SGNNTR04Q	2-2319847-6
		7.62 [.300]	10.06 [.396]	04	EDS04SGNNTR04Q	2-2319847-5
		5.08 [.200]	7.52 [.296]	03	EDS03SGNNTR04Q	2-2319847-4
		2.54 [.100]	4.98 [.196]	02	EDS02SGNNTR04Q	2-2319847-3
		-	2.44 [.096]	01	EDS01SGNNTR04Q	2-2319847-2
		27.94 [1.100]	30.38 [1.196]	12	EDS12SNNNTU04Q	2-2319847-1
NOTES	SERIES	B	A	No OF POSITION	TE DESCRIPTIVE PART NUMBER	TE PART NUMBER
		DIM				

<div>2</div>	J	22.86 [.900]	25.3 [.996]	10	EDS10SNNNTU04Q	2-2319847-0
		20.32 [.800]	22.76 [.896]	09	EDS09SNNNTU04Q	1-2319847-9
		17.78 [.700]	20.22 [.796]	08	EDS08SNNNTU04Q	1-2319847-8
		15.24 [.600]	17.68 [.696]	07	EDS07SNNNTU04Q	1-2319847-7
		12.70 [.500]	15.14 [.596]	06	EDS06SNNNTU04Q	1-2319847-6
		10.16 [.400]	12.60 [.496]	05	EDS05SNNNTU04Q	1-2319847-5
		7.62 [.300]	10.06 [.396]	04	EDS04SNNNTU04Q	1-2319847-4
		5.08 [.200]	7.52 [.296]	03	EDS03SNNNTU04Q	1-2319847-3
		2.54 [.100]	4.98 [.196]	02	EDS02SNNNTU04Q	1-2319847-2
	M	27.94 [1.100]	30.38 [1.196]	12	EDS12SGNNTU04Q	1-2319847-1
		22.86 [.900]	25.3 [.996]	10	EDS10SGNNTU04Q	1-2319847-0
		20.32 [.800]	22.76 [.896]	09	EDS09SGNNTU04Q	2319847-9
		17.78 [.700]	20.22 [.796]	08	EDS08SGNNTU04Q	2319847-8
		15.24 [.600]	17.68 [.696]	07	EDS07SGNNTU04Q	2319847-7
		12.70 [.500]	15.14 [.596]	06	EDS06SGNNTU04Q	2319847-6
		10.16 [.400]	12.60 [.496]	05	EDS05SGNNTU04Q	2319847-5
		7.62 [.300]	10.06 [.396]	04	EDS04SGNNTU04Q	2319847-4
		5.08 [.200]	7.52 [.296]	03	EDS03SGNNTU04Q	2319847-3
		2.54 [.100]	4.98 [.196]	02	EDS02SGNNTU04Q	2319847-2
		-	2.44 [.096]	01	EDS01SGNNTU04Q	2319847-1
		NOTES	SERIES	B	A	No OF POSITION
DIM						

THIS DRAWING IS A CONTROLLED DOCUMENT.

DWN29MAY2017SHIVAKUMAR S S

CHK12MAY2017ALEXANDER SHARPE

APVD29MAY2017ALEXANDER SHARPE

DIMENSIONS: mm[INCHES]

0 PLC ± -

1 PLC ± -

2 PLC ± 0.20[.008]

3 PLC ± -

4 PLC ± -

ANGLES ± -

TOLERANCES UNLESS OTHERWISE SPECIFIED:

FINISH -

PRODUCT SPEC -

APPLICATION SPEC -

WEIGHT A2

CUSTOMER DRAWING

SCALE 1:1

SHEET 3 OF 4

REV A1

NAME

END STACKABLE DIP SWITCHES  
RAISED ACTUATOR

SIZE

CAGE CODE 00779

DRAWING NO. 2319847

RESTRICTED TO -

TE Connectivity

TE

REVISIONS					
P	LTR	DESCRIPTION	DATE	DWN	APVD
	-	SEE SHEET 1	-	-	-

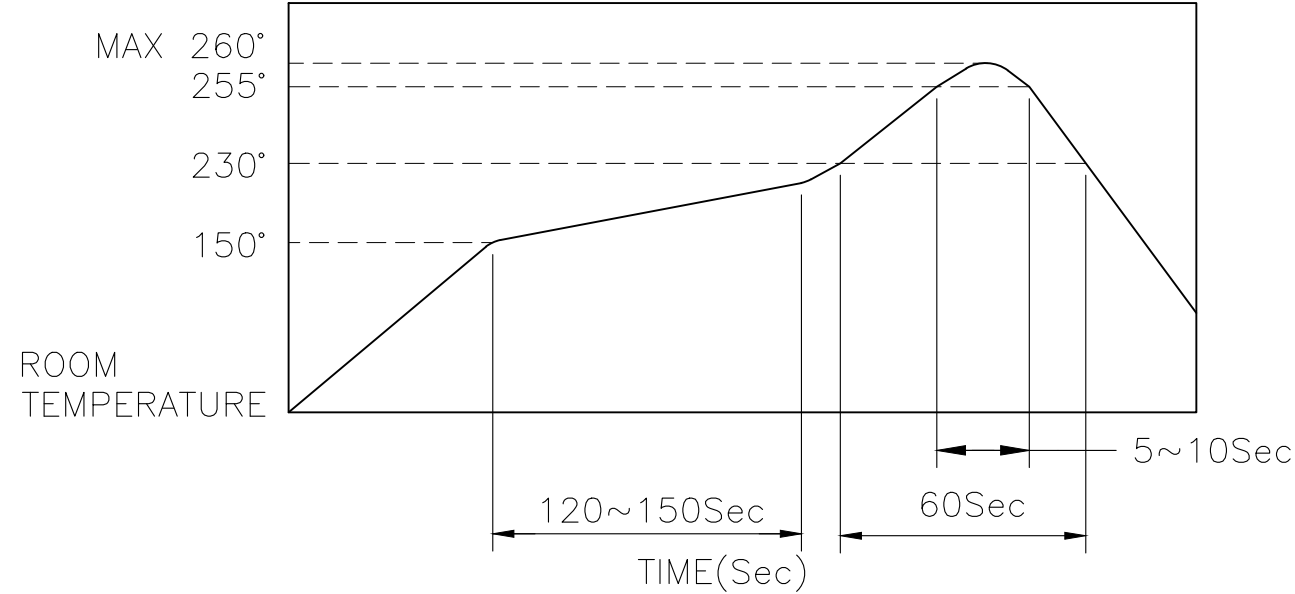
SOLDERING CONDITIONS:

THE CONDITIONS MENTIONED BELOW IS THE TEMPERATURE ON THE CU FOIL OF THE P.C.B SURFACE. DO NOT ALLOW THE SWITCH’S SURFACE TEMPERATURE TO EXCEED 260°C.

MANUAL SOLDERING

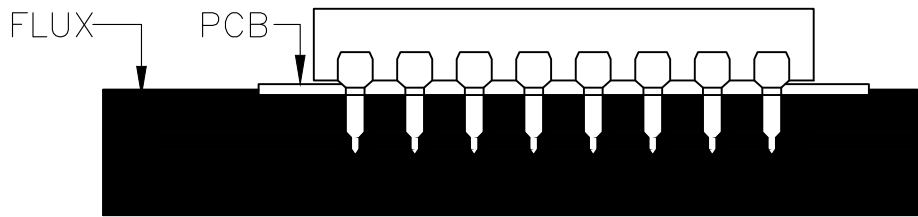
SOLDERING TEMPERATURE	MAX. 350°C.
CONTINUOUS SOLDERING TIME	MAX. 5 SECONDS.

REFLOW SOLDERING



HANDLING PRECAUTIONS

- CARE SHOULD BE EXERCISED SO THAT FLUX FROM THE UPPER PART OF THE PRINTED CIRCUIT BOARD DOES NOT ADHERE TO THE SWITCH.
- DON’T CLEAN THE SWITCH BODY EXCEPT WITH TOP TAPE SEALED TYPE, WHICH CAN ONLY SPRAY OF CLEANING METHOD FROM TOP OF S/W.
- ENSURE FLUX DOES NOT RISE ABOVE THE TOP SURFACE OF THE PCB.



SPECIFICATIONS:

MATERIALS:

BASE: PA (HIGH-TEMP. NYLON) UL94V-O  
COVER: PA (HIGH-TEMP. NYLON) UL94V-O  
ACTUATOR: LCP UL94V-O  
CONTACT: COPPER ALLOY, GOLD (in contact area)  
OVER NICKEL PLATE  
TERMINAL: BRASS ALLOY, GOLD PLATE  
TAPE:POLYAMIDE.

ELECTRICAL:

CONTACT RATING: NON-SWITCHING 100mA @ 50 VDC.  
SWITCHING: 25mA @ 24 VDC.  
INITIAL CONTACT RESISTANCE: 100mΩ MAX. @ 2 VDC. 10mA.  
INSULATION RESISTANCE: 100 MEGOHMS MIN. @ 500 VDC,  
1 MINUTE +/- 5 SECONDS.  
DIELECTRIC STRENGTH: 500 VAC (50 OR 60 HZ), 1 MINUTE.  
DURABILITY: 2,000 CYCLES.  
CAPACITANCE: 5 pF MAX @ 1 MHz +/- 10 KHz.

MECHANICAL:

OPERATING FORCE: 1000gf MAX.

ENVIRONMENTAL:

OPERATING TEMPERATURE: -20°C TO +85°C.  
STORAGE TEMPERATURE: -40°C TO +85°C.  
SOLDER HEAT RESISTANCE PER 109-201, CONDITION B.  
SOLDERABILITY PER JIS C 0050 & JIS C 0053.

NOTES:

- ALL MATERIALS AND FINISHES SHALL COMPLY WITH EU DIRECTIVE 2002/95/EC OF 27 JAN 2003 (ROHS).



TUBE PACKAGING.



TAPE AND REEL PACKAGING.

THIS DRAWING IS A CONTROLLED DOCUMENT.		DWN 29MAY2017 SHIVAKUMAR S S	TE Connectivity			
DIMENSIONS: mm[INCHES]		CHK 12MAY2017 ALEXANDER SHARPE				
		APVD 29MAY2017 ALEXANDER SHARPE	NAME			
		PRODUCT SPEC	END STACKABLE DIP SWITCHES RAISED ACTUATOR			
TOLERANCES UNLESS OTHERWISE SPECIFIED:		APPLICATION SPEC	-			
0 PLC ± - 1 PLC ± - 2 PLC ± 0.20[.008] 3 PLC ± - 4 PLC ± - ANGLES ± -		WEIGHT	SIZE	CAGE CODE	DRAWING NO	RESTRICTED TO
MATERIAL -		FINISH -	A2	00779	C=2319847	-
CUSTOMER DRAWING			SCALE	1:1	SHEET	4 OF 4
			REV A1			

# Mouser Electronics

Authorized Distributor

Click to View Pricing, Inventory, Delivery & Lifecycle Information:

[TE Connectivity:](#)

[1-2319847-5](#)