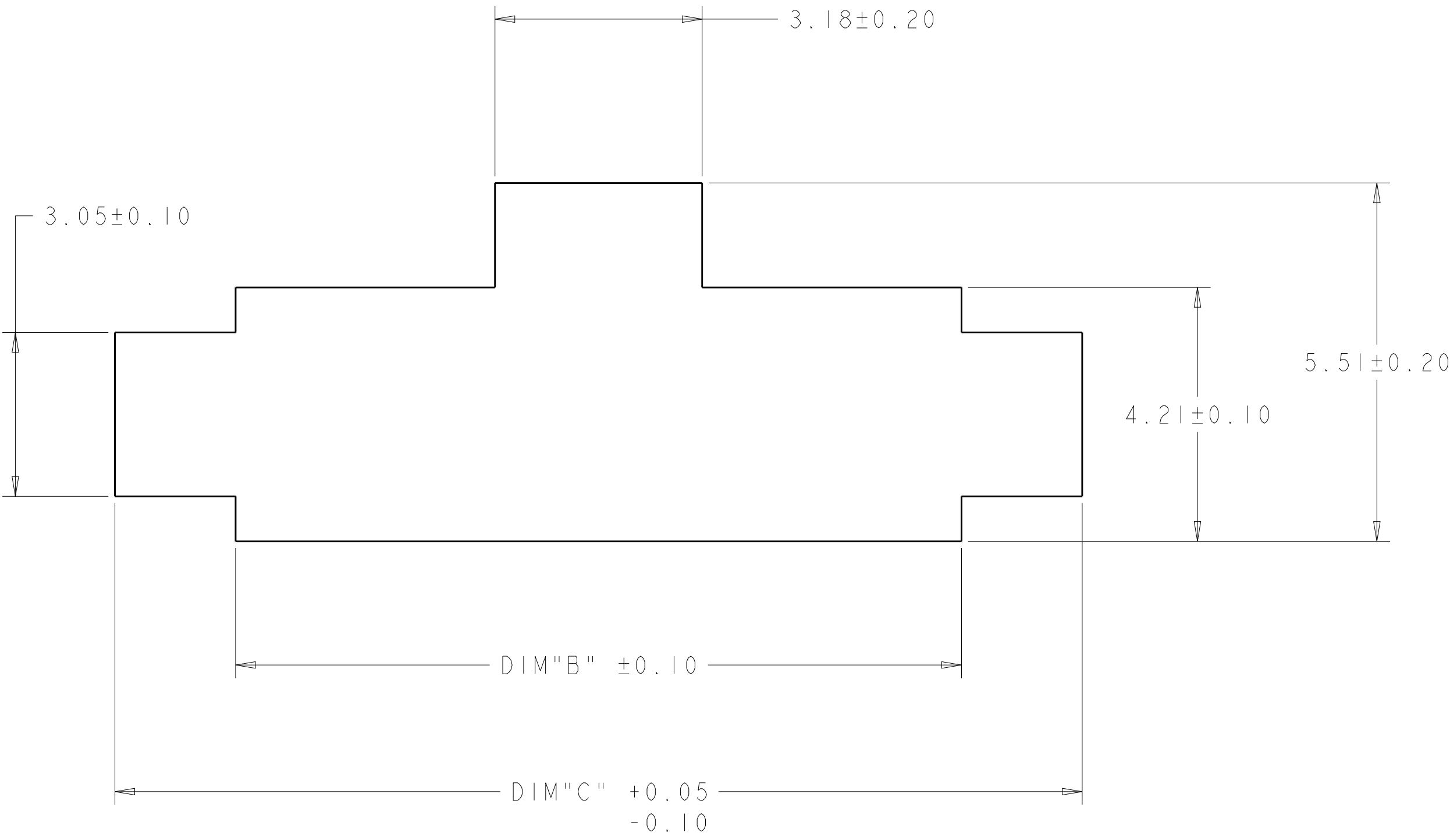
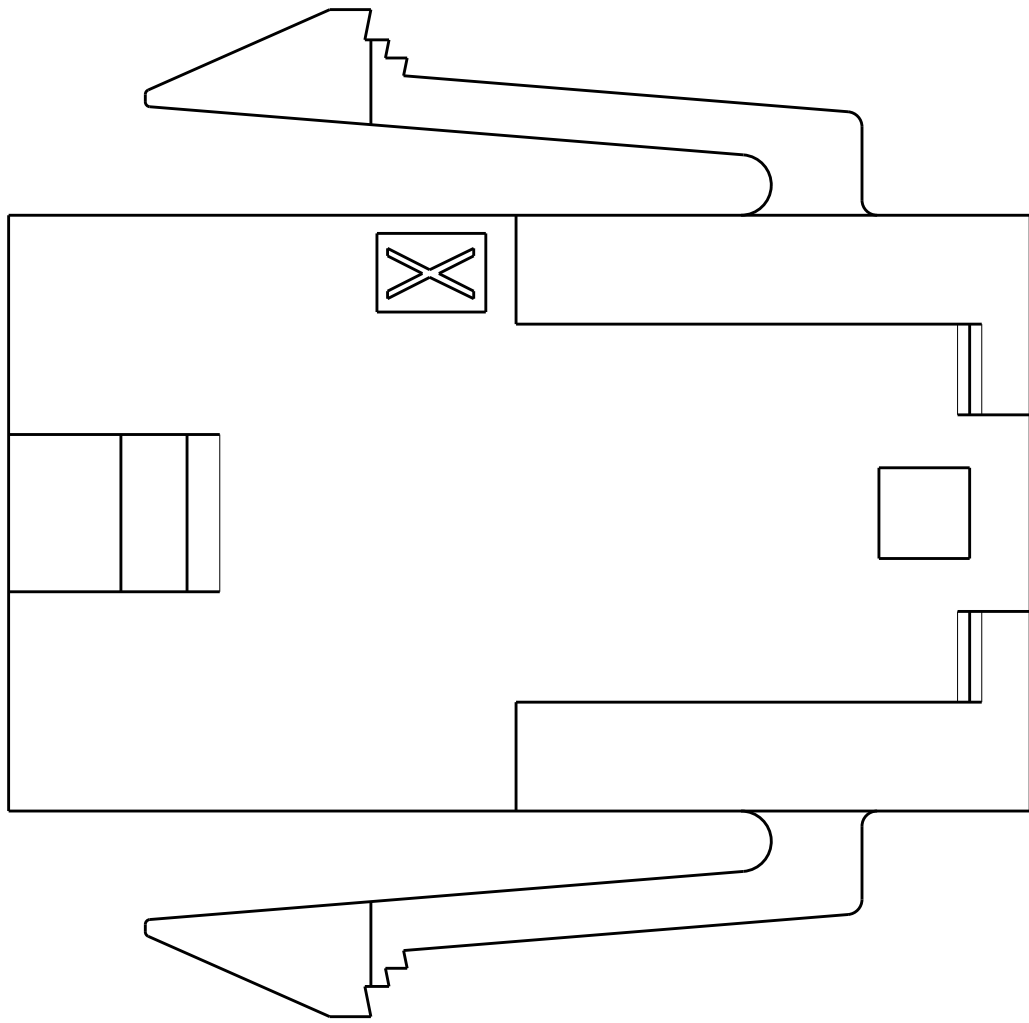
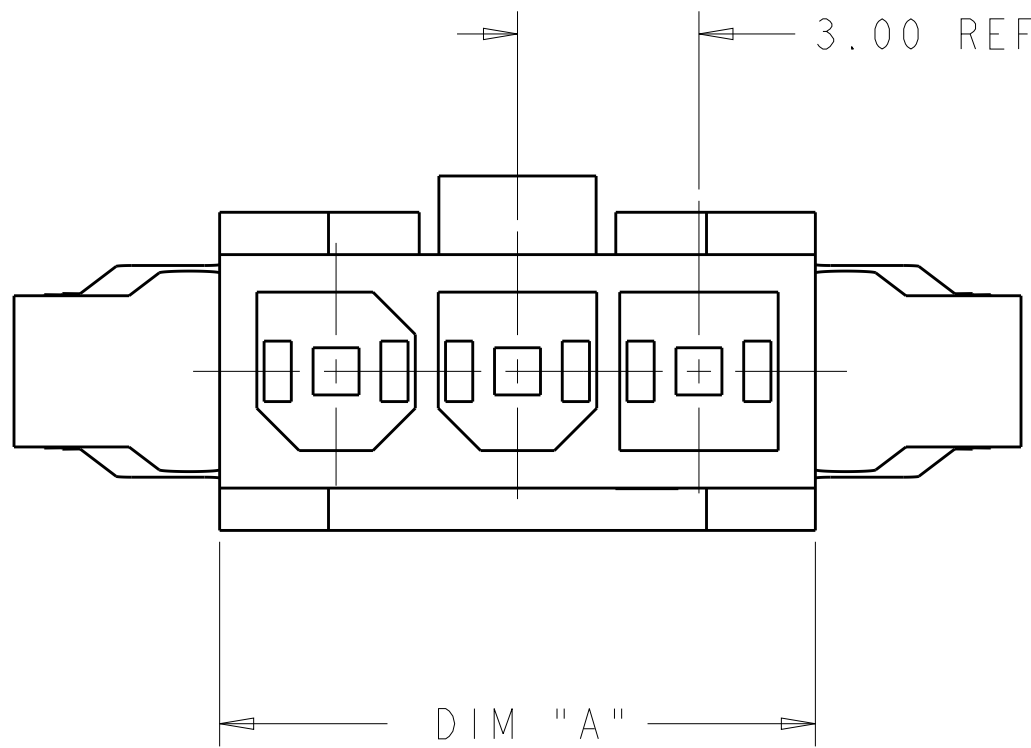


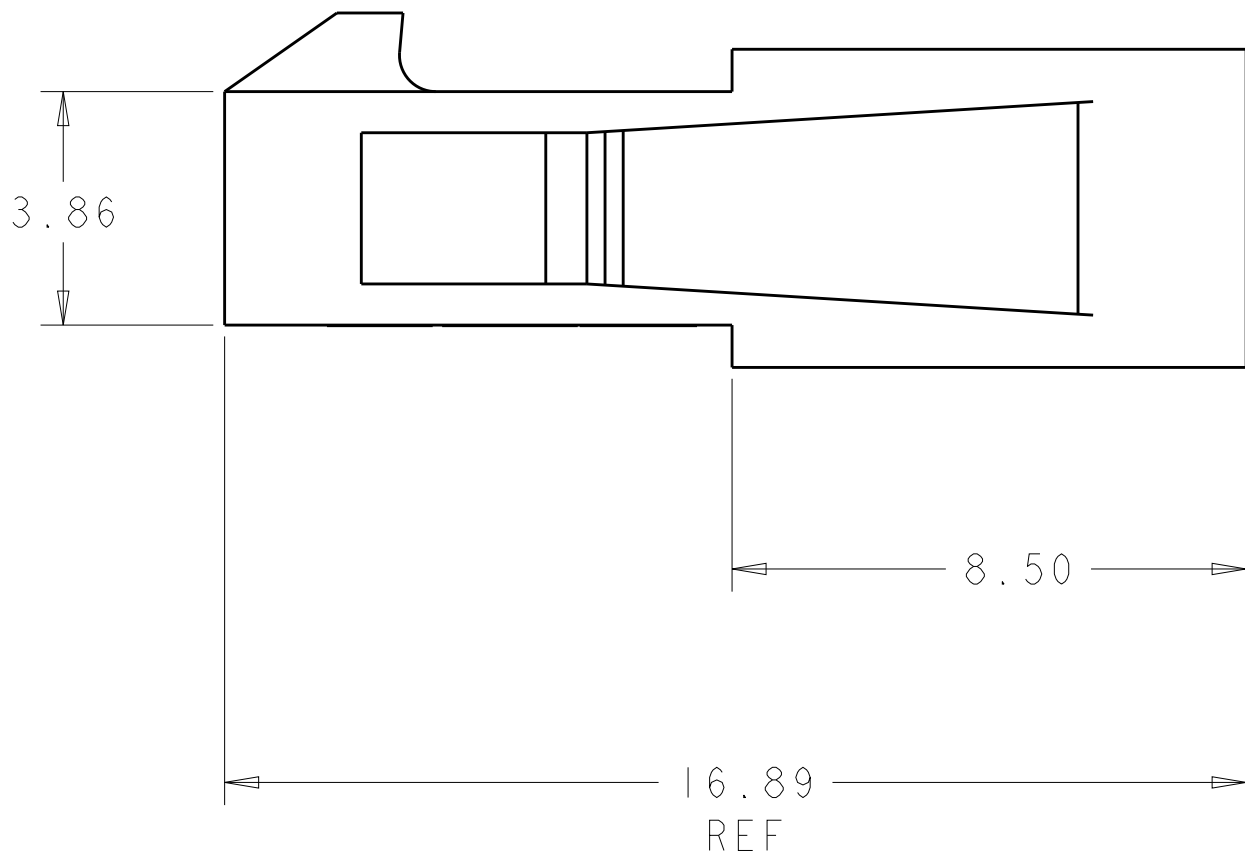
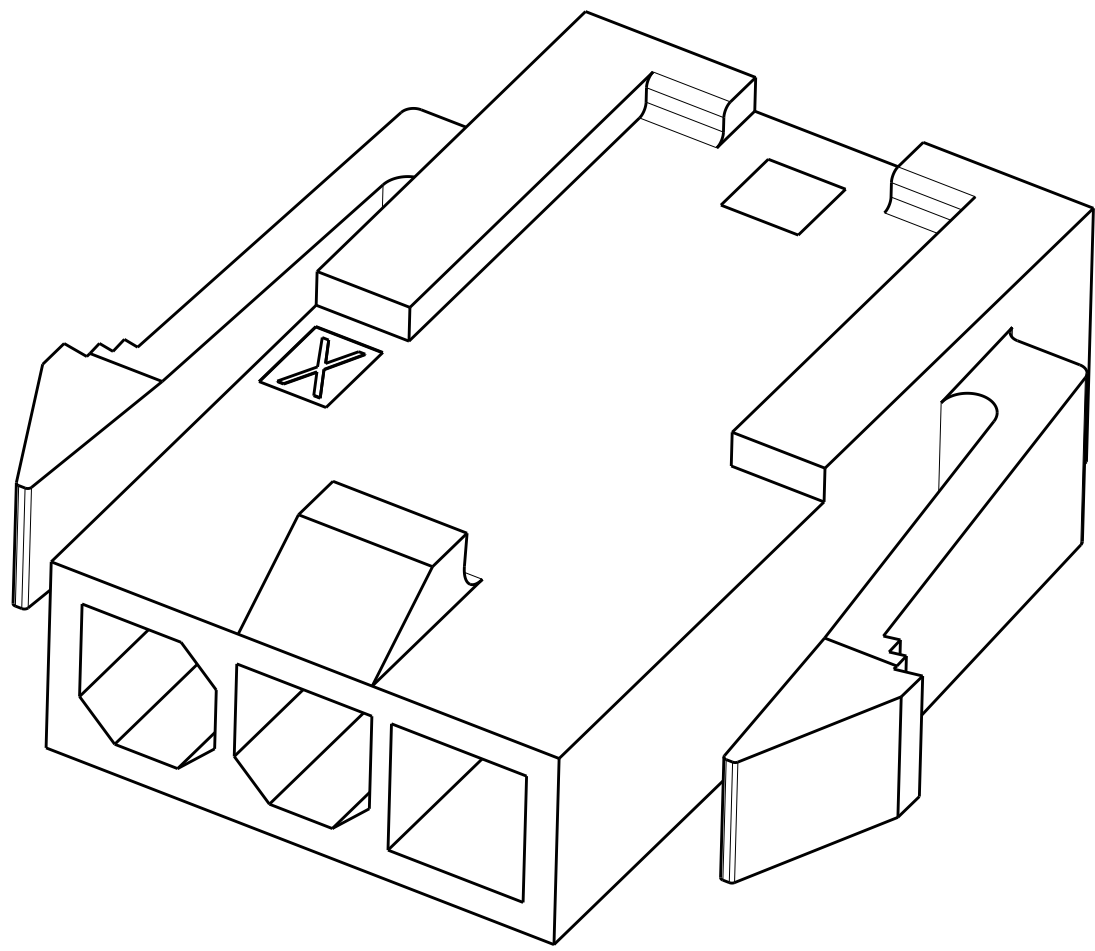
REVISIONS					
P	LTR	DESCRIPTION	DATE	DWN	APVD
	A1	REVISED PER ECR-18-007792	21MAY2018	JB	DZ
	B	REVISED PER ECR-18-014008	04SEP2018	JB	DZ



PANEL CUT OUT



- RECOMMENDED PANEL THICKNESS 1.57-2.3
- 2 PANEL MUST BE PUNCHED SO THAT HOUSING ENTERS THE PANEL IN THE SAME DIRECTION AS THE PUNCH
- MATERIAL PA66 UL94-V0, GW , COLOR-NATURAL



UL94-V0 GWT <div><div></div><div>3</div></div>	16.88	12.85	13.20	4	2315786-4
	13.88	9.85	10.20	3	2315786-3
	10.88	6.85	7.20	2	2315786-2
MATERIAL	DIM "C"	DIM "A"	DIM "B"	NO. OF POSITIONS	PART NUMBER
THIS DRAWING IS A CONTROLLED DOCUMENT.		DWN: BASAVARAJA D A 02MAR2018 CHK: JYOTIRMAYA 02MAR2018 APVD: DANIEL ZHANG 02MAR2018		<div><div>TE</div><div>TE Connectivity</div></div>	
DIMENSIONS: mm		TOLERANCES UNLESS OTHERWISE SPECIFIED: 0 PLC ± 1 PLC ± 2 PLC ±0.13 3 PLC ± 4 PLC ± ANGLES ± FINISH		NAME: PLUG HOUSING,SINGLE ROW, PANEL MOUNT MICRO MATE-N-LOK	
		PRODUCT SPEC 108-1836 APPLICATION SPEC 114-13000 WEIGHT -		SIZE: A100779C=2315786	
MATERIAL	-	CUSTOMER DRAWING		SCALE: 8:1	SHEET 1 OF 1 REV B

Mouser Electronics

Authorized Distributor

Click to View Pricing, Inventory, Delivery & Lifecycle Information:

[TE Connectivity:](#)

[2315786-2](#)