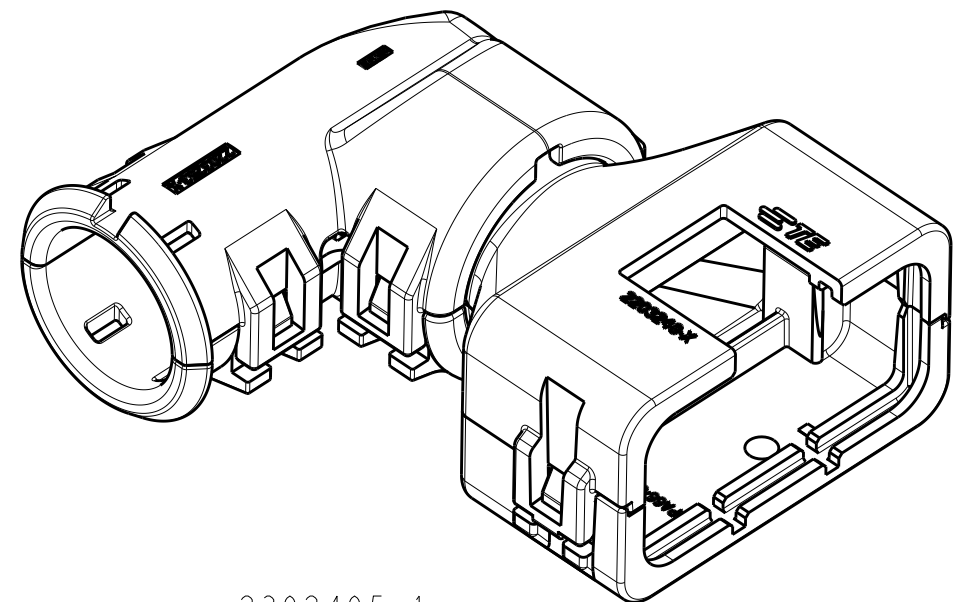


D

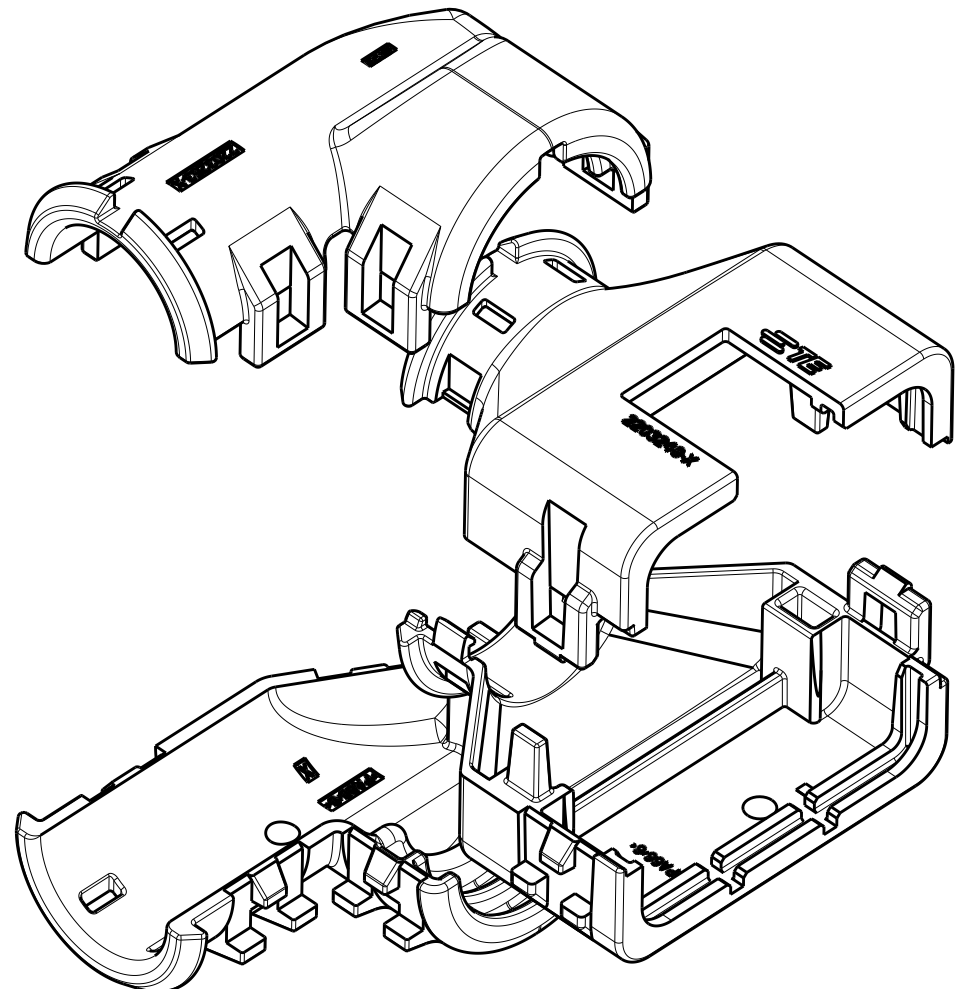
C

B

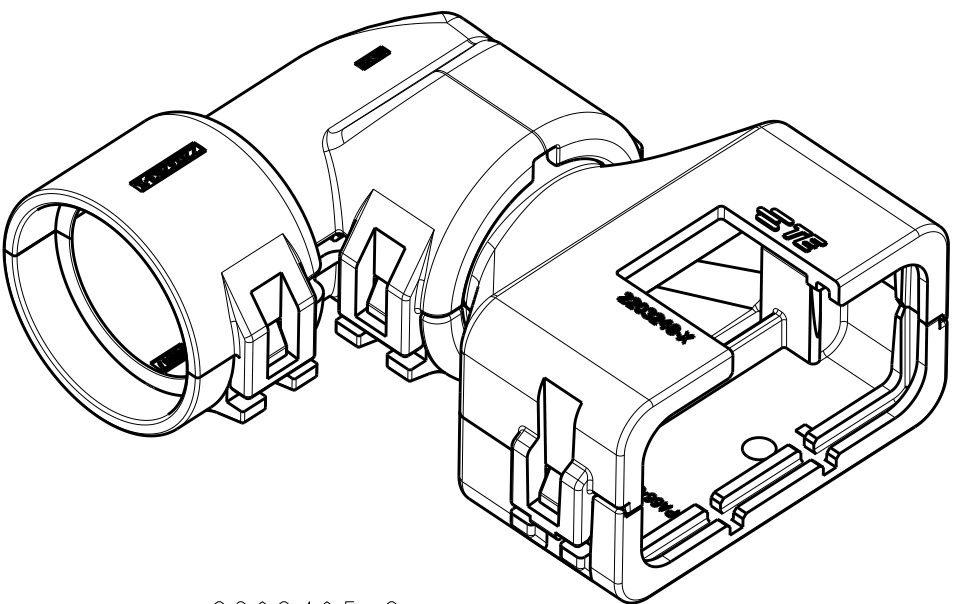
A



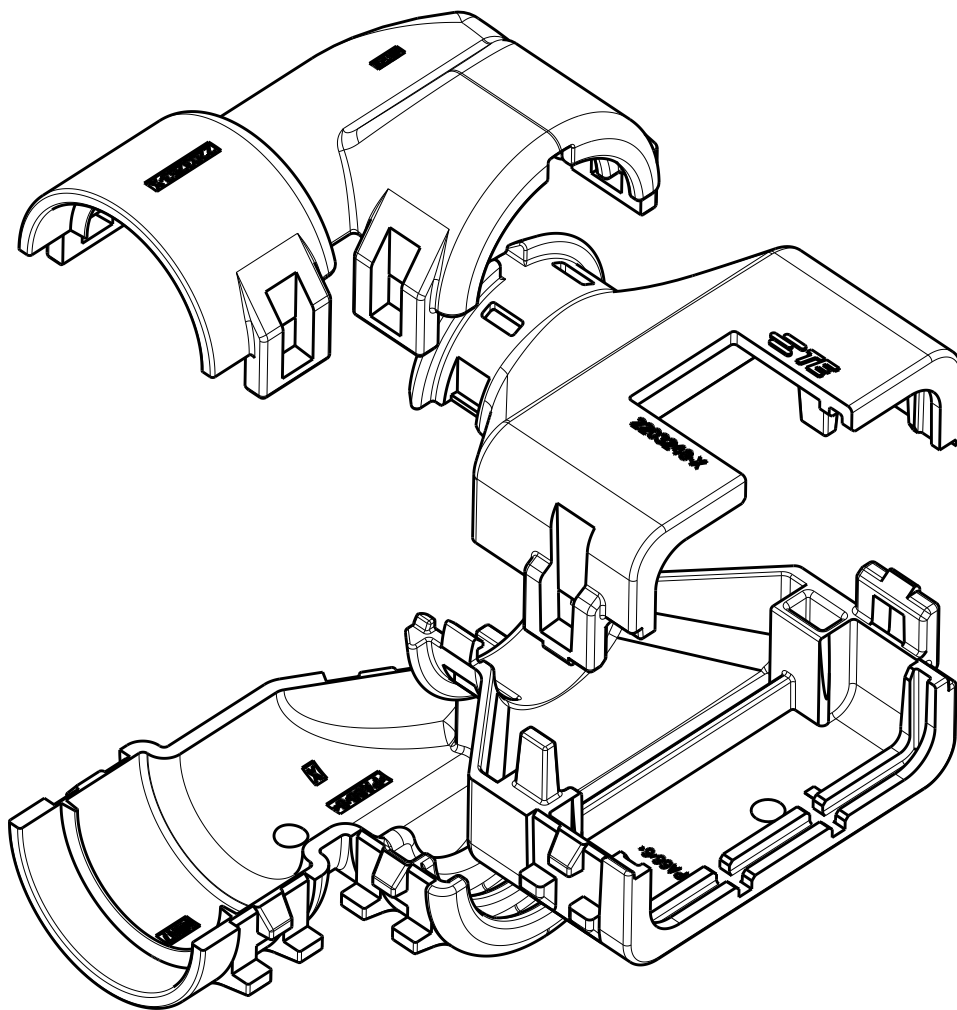
2302495-1  
ASSEMBLED ISOMETRIC VIEW SHOWN



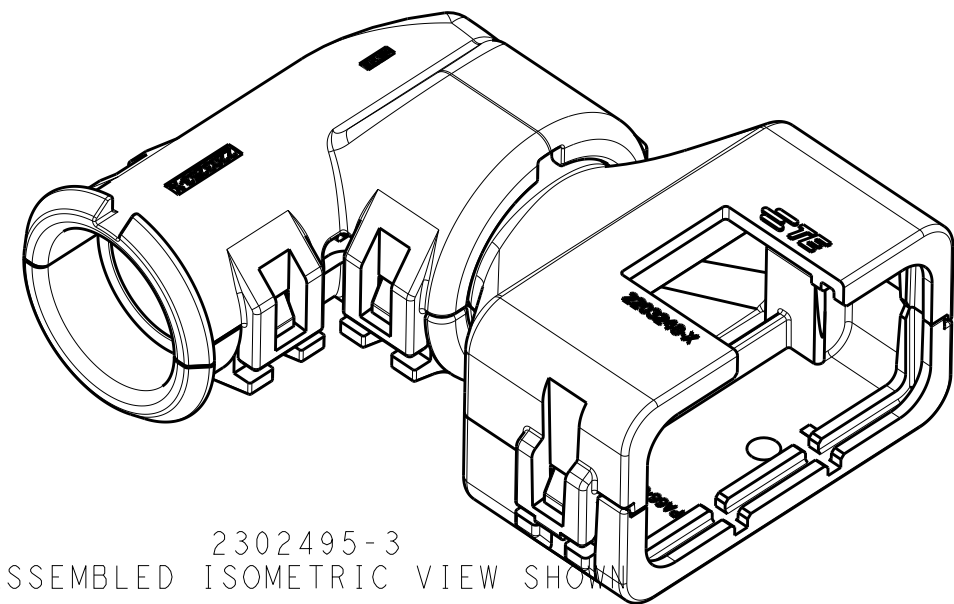
2302495-1  
EXPLODED ISOMETRIC VIEW SHOWN  
2 3



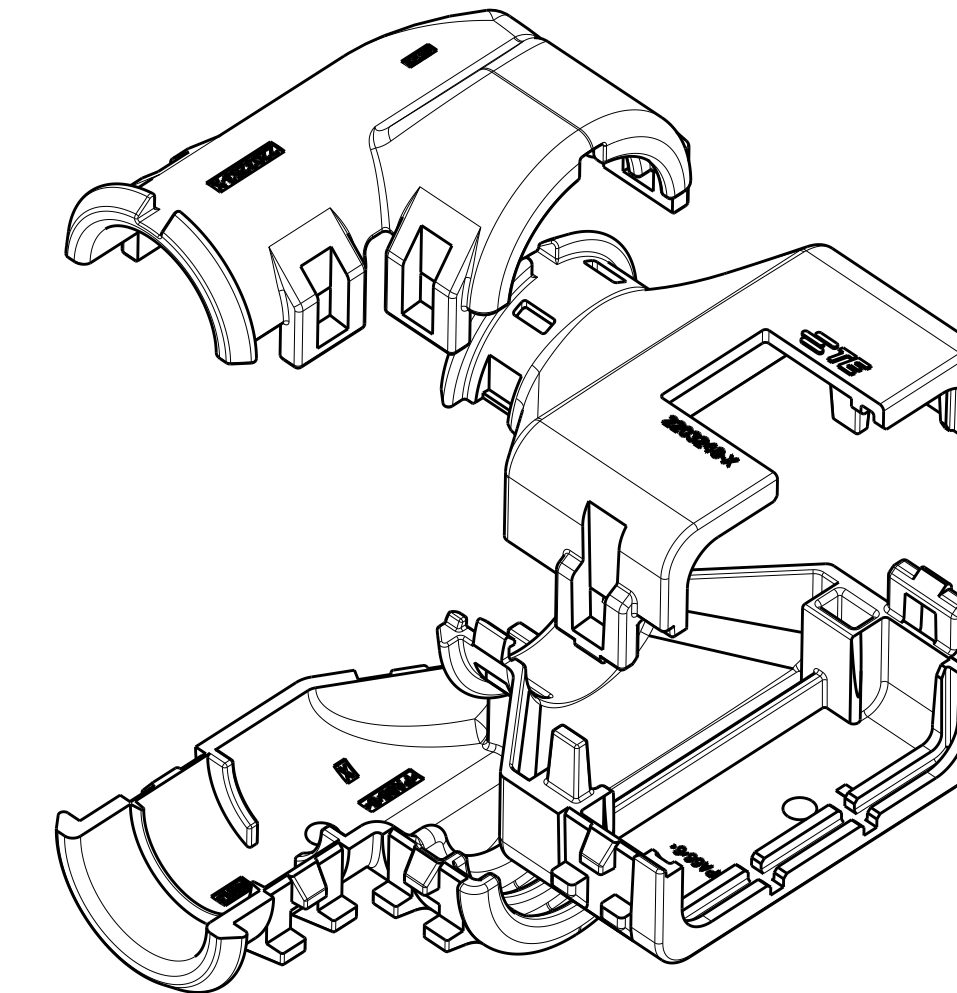
2302495-2  
ASSEMBLED ISOMETRIC VIEW SHOWN



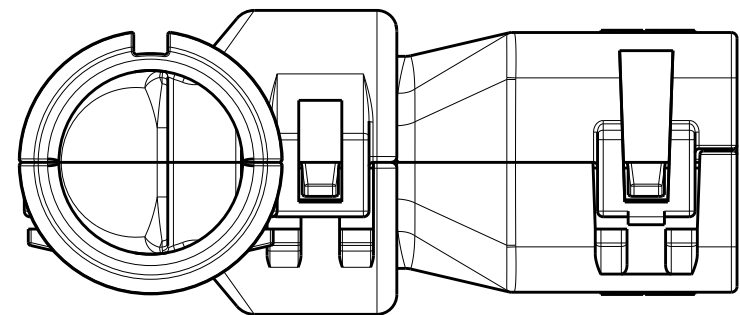
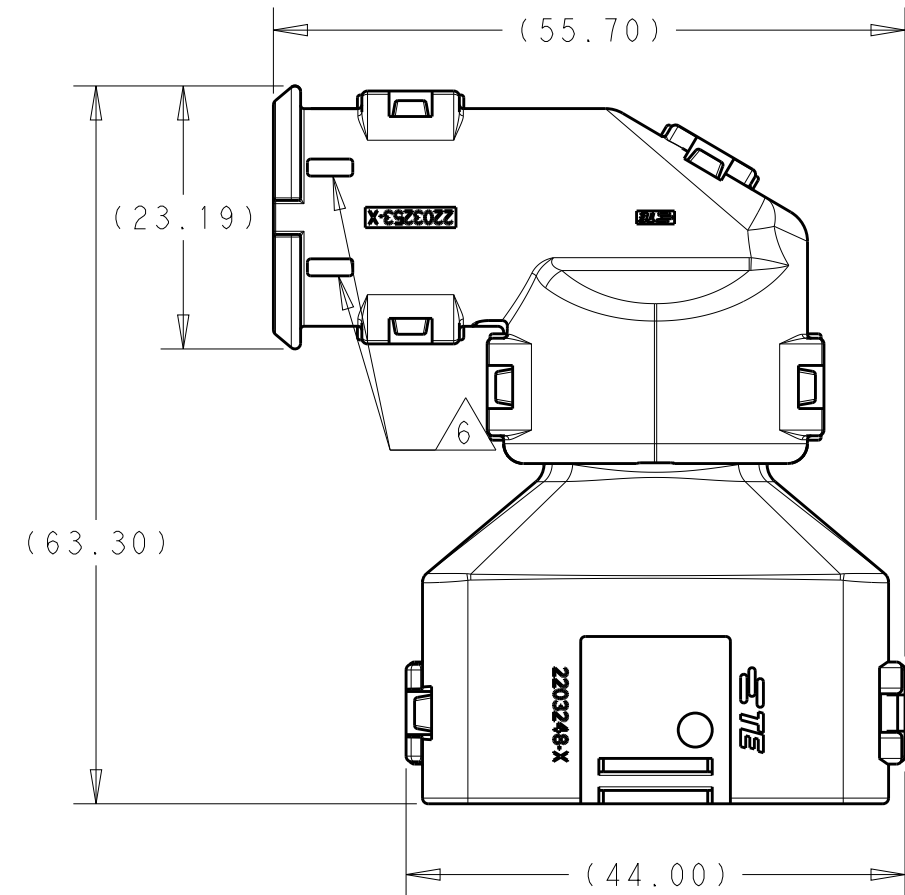
2302495-2  
EXPLODED ISOMETRIC VIEW SHOWN  
2 3



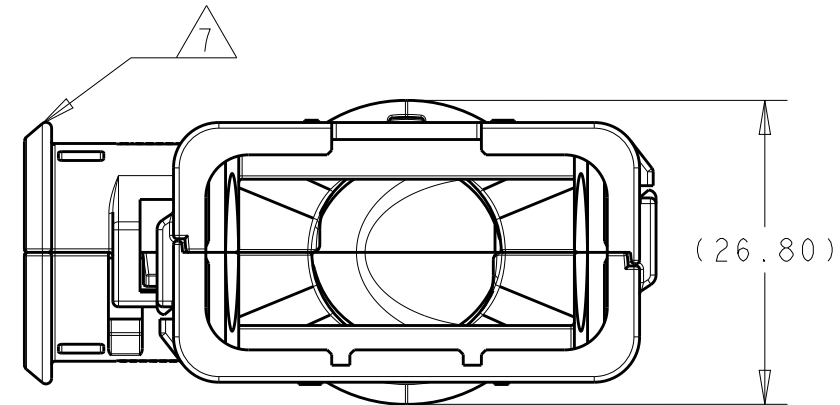
2302495-3  
ASSEMBLED ISOMETRIC VIEW SHOWN



2302495-3  
EXPLODED ISOMETRIC VIEW SHOWN  
2 3

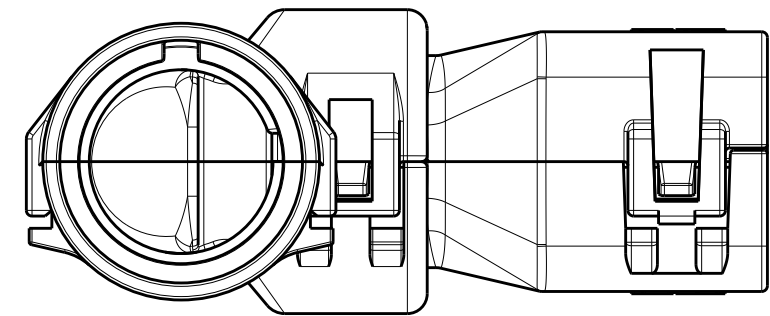
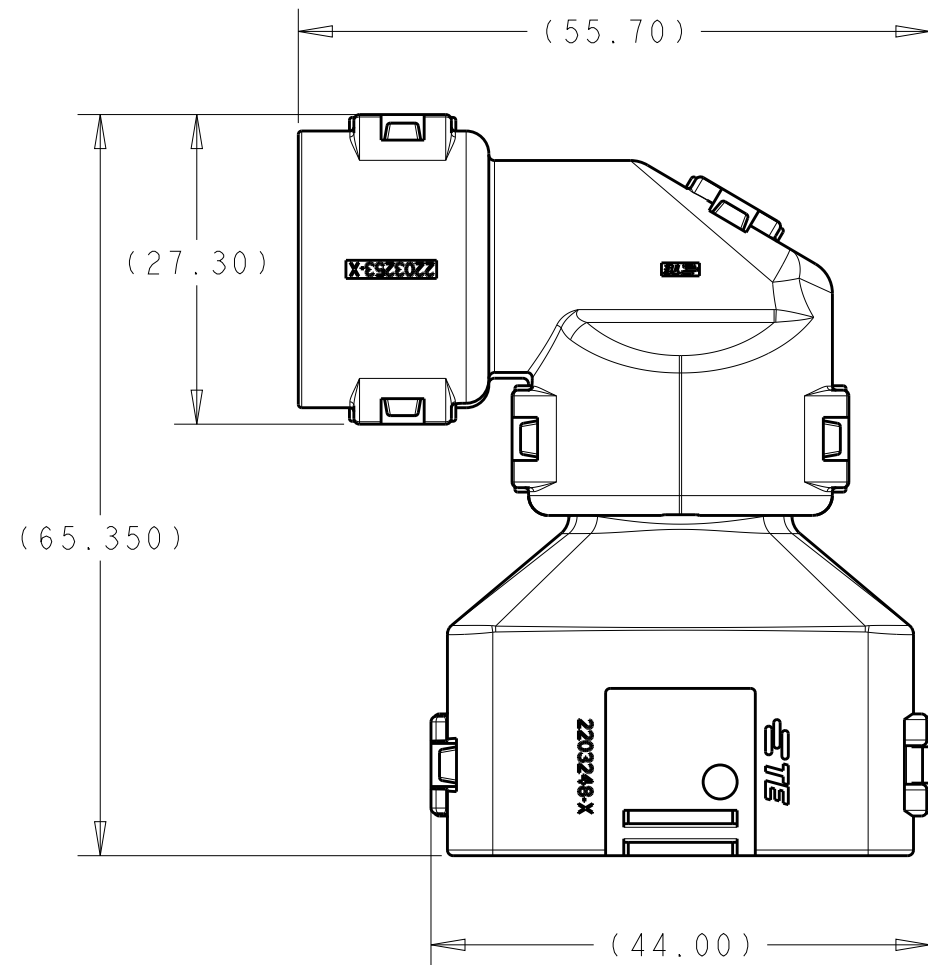


2302495-1  
ASSEMBLED VIEW SHOWN  
DIMENSIONS SHOWN TYPICAL FOR 2302495-1 AND -3  
4

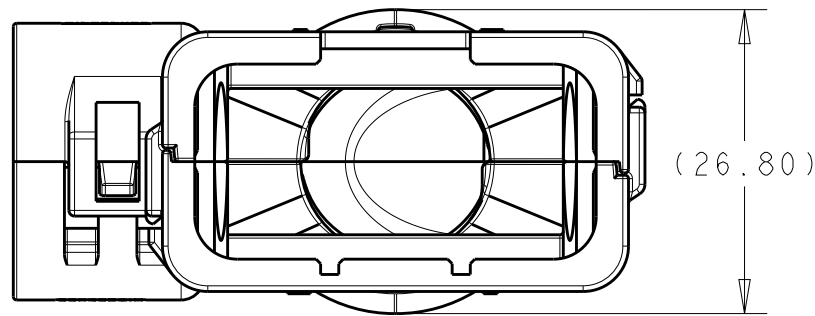


| REVISIONS |     |                            |           |     |      |
|-----------|-----|----------------------------|-----------|-----|------|
| P         | LTR | DESCRIPTION                | DATE      | DWN | APVD |
|           | A   | RELEASED PER ECO-16-008203 | 01JUN2016 | JM  | RB   |
|           | A2  | REV PER ECO-16-013256      | 08SEP2016 | JM  | RB   |
|           |     |                            |           |     |      |
|           |     |                            |           |     |      |

- 1 MATERIAL: NYLON MOLDING COMPOUND, BLACK, PA66/6.
- 2 BACKSHELL DESIGNED SUCH THAT TWO HALVES ATTACH TO ONE ANOTHER AND CLAMP AROUND THE CONNECTOR COVER.
- 3 ELBOW DESIGNED SUCH THAT TWO HALVES ATTACH TO ONE ANOTHER AND CLAMP AROUND THE BACKSHELL COLLAR.
- 4 DIMENSIONS TO BE MEASURED WHEN ELBOWS AND BACKSHELLS ASSEMBLED.
- 5 PRODUCT WEIGHTS:  
2302495-1: 15.05g ASSEMBLED  
2302495-2: 15.50g ASSEMBLED  
2302495-3: 15.25g ASSEMBLED
- 6 4MM WIDE SLOTS FOR TIE WRAP TO SECURE HARNESS WIRES (-1 ONLY).
- 7 HEAT SHRINK TUBING FEATURE (-1 AND -3 ONLY).
8. INSTRUCTION SHEET: 408-151043.
9. CONDUIT PROFILE: NORMAL ONLY.



2302495-2  
ASSEMBLED VIEW SHOWN  
DIMENSIONS SHOWN FOR 2302495-2 ONLY  
4



|                      |              |              |             |
|----------------------|--------------|--------------|-------------|
| 776437-X<br>776533-X | NC16         | NW13         | 2302495-3   |
|                      | NC20         | NW17         | 2302495-2   |
|                      | SMOOTH       | SMOOTH       | 2302495-1   |
| FITS ON<br>PLUG ASSY | CORREGATE NC | CORREGATE NW | PART NUMBER |
|                      | CONDUIT SIZE |              |             |

|  |  |  |  |                  |          |           |                               |  |  |
|--|--|--|--|------------------|----------|-----------|-------------------------------|--|--|
| THIS DRAWING IS A CONTROLLED DOCUMENT. |  |  |  | DWN              | J MCNEAL | 13APR2016 | TE Connectivity               |  |  |
| DIMENSIONS:                            |  |  |  | CHK              | R BALTER | 13APR2016 |                               |  |  |
| mm[INCHES]                             |  |  |  | APVD             |          |           | NAME                          |  |  |
|  |  |  |  | PRODUCT SPEC     |          |           | BACKSHELL AND ELBOW KIT,      |  |  |
|  |  |  |  | APPLICATION SPEC |          |           | 12 POSN PLUG ASSY, AMPSEAL 16 |  |  |
|  |  |  |  | MATERIAL         |          |           | SIZE                          |  |  |
|  |  |  |  | FINISH           |          |           | CAGE CODE                     |  |  |
|  |  |  |  | WEIGHT           |          |           | DRAWING NO                    |  |  |
|  |  |  |  | CUSTOMER DRAWING |          |           | RESTRICTED TO                 |  |  |
|  |  |  |  |                  |          |           | A100779C=2302495              |  |  |
|  |  |  |  |                  |          |           | SCALE                         |  |  |
|  |  |  |  |                  |          |           | 3:2                           |  |  |
|  |  |  |  |                  |          |           | SHEET                         |  |  |
|  |  |  |  |                  |          |           | 1 OF 1                        |  |  |
|  |  |  |  |                  |          |           | REV                           |  |  |
|  |  |  |  |                  |          |           | A2                            |  |  |

# Mouser Electronics

Authorized Distributor

Click to View Pricing, Inventory, Delivery & Lifecycle Information:

[TE Connectivity:](#)

[2302495-1](#)