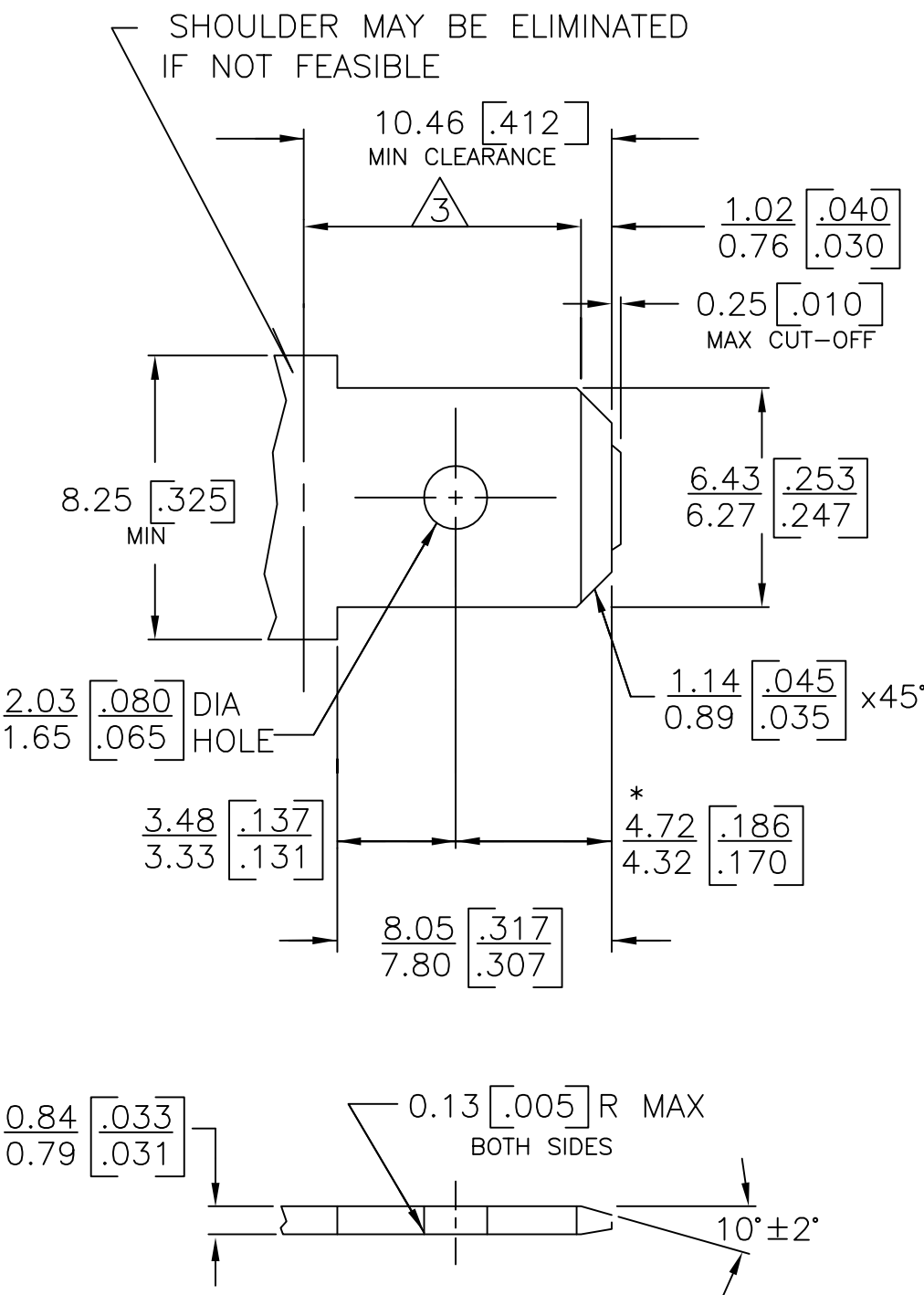
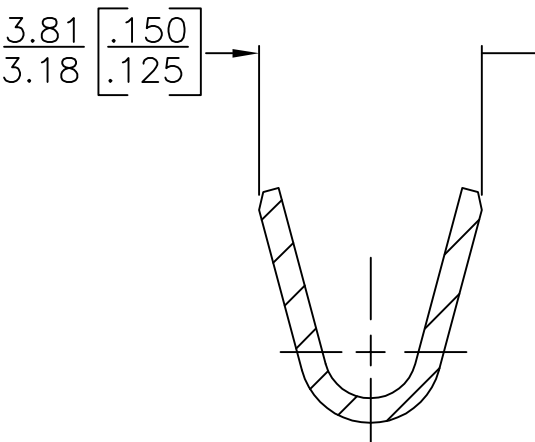
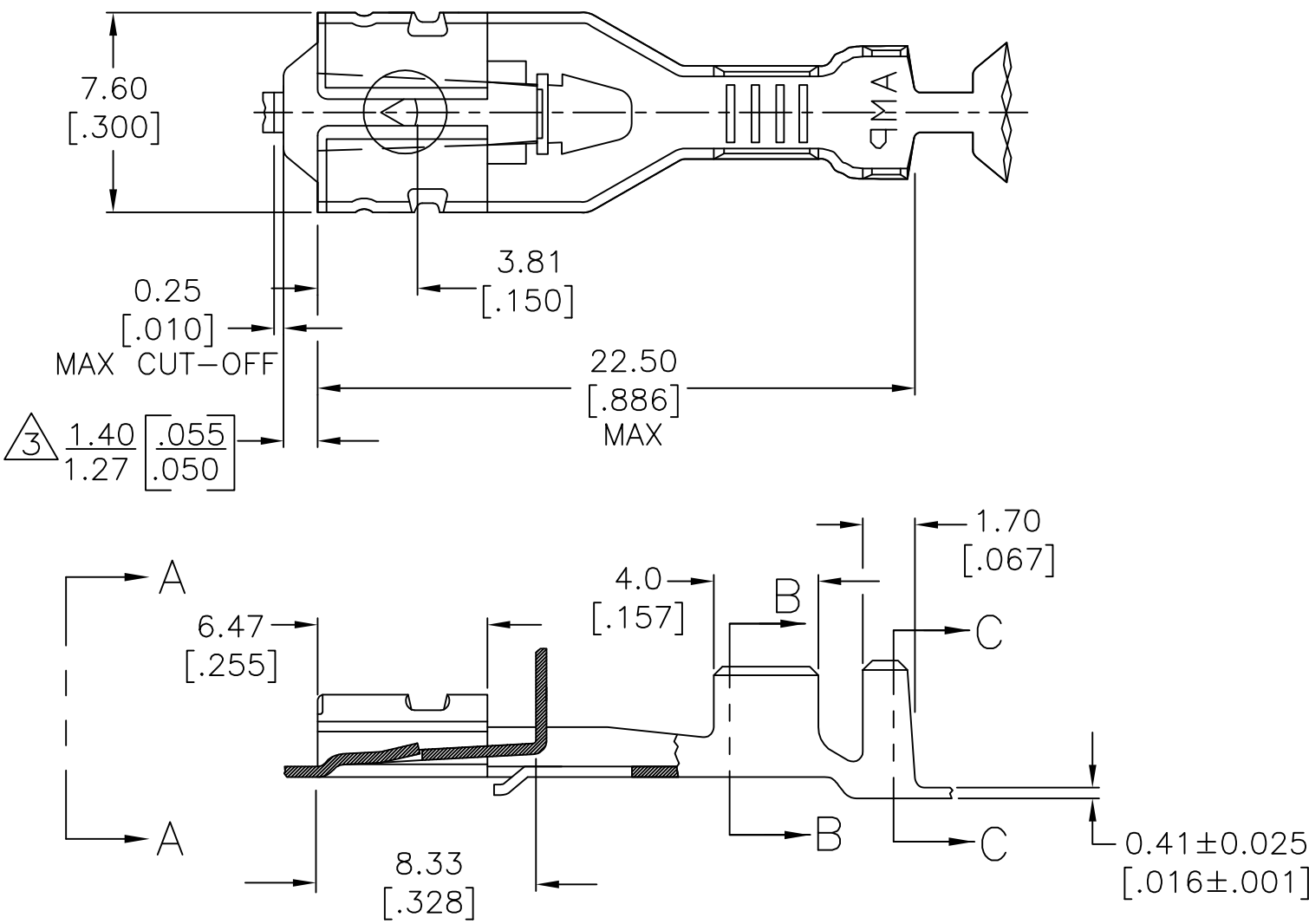


REVISIONS					
P	LTR	DESCRIPTION	DATE	DWN	APVD
	A2	REVISED PER ECR-17-014411	03OCT2017	BDA	MD

SUGGESTED MATING TAB

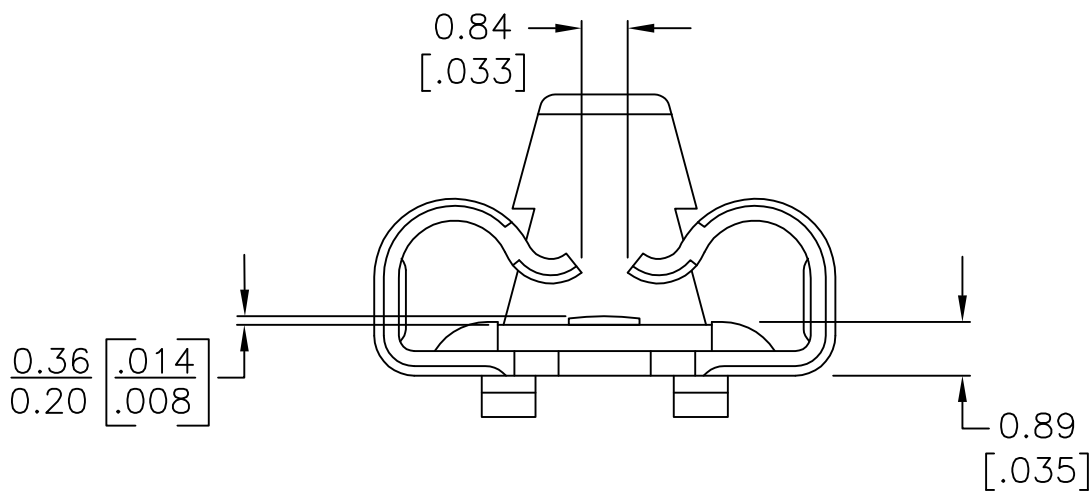


- MATL: 1/2 H BRASS OR NICKEL PL STEEL.
 - NO BURRS PERMISSIBLE AT HOLE.
 - MUST BE FLAT WITHIN 0.076 [.003] OVER THIS LENGTH.
 - TIN PLATING IS REQUIRED ON BRASS WHEN TERMINAL TEMP. IS OVER 225°F
 - HOLE MUST BE SYMMETRICAL ABOUT TAB \varnothing WITHIN 0.076 [.003]
- * TO BE USED ONLY WHEN SHOULDER IS ELIMINATED.

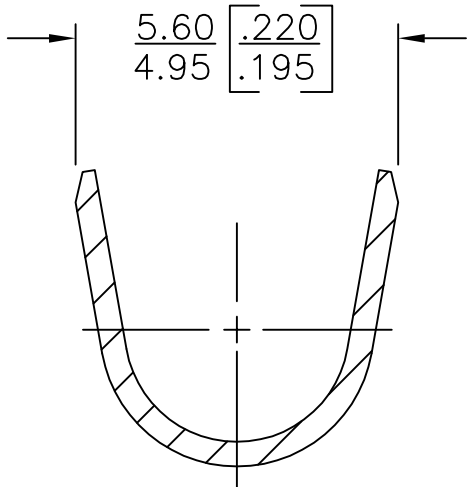


SECTION B-B

- DIMENSIONS IN BRACKETS ARE IN INCHES.
- PRODUCT PROVIDED IN STRIP FORM, BREAKS MAY BE PRESENT.
- THE 1.40 [.055] 1.27 [.050] DIMENSION MUST BE MAINTAINED BY THE APPLICATOR CUT-OFF TO ENSURE THE PROPER LOCKING FUNCTION OF THE RECEPTACLE.



VIEW A-A



SECTION C-C

UNPLATED	2.29-3.94 [.090-.155] DIA	[#18-#14] AWG	2238155-2
TIN PLATED	2.29-3.94 [.090-.155] DIA	[#18-#14] AWG	2238155-1
FINISH	INSULATION RANGE	WIRE SIZE	PART NO.

THIS DRAWING IS A CONTROLLED DOCUMENT.		DWN BASVESH WARAD 07OCT2016	TE Connectivity			
		CHK SMITH, RODNEY 07OCT2016				
DIMENSIONS: mm [INCHES]		APVD SMITH, RODNEY 07OCT2016	NAME RECEPTACLE, POSITIVE LOCK, .250 SERIES			
		PRODUCT SPEC				
		APPLICATION SPEC	SIZE A2		CAGE CODE 00779	DRAWING NO C=2238155
MATERIAL BRASS		WEIGHT	SCALE 5:1		SHEET 1 of 1	REV A2
		CUSTOMER DRAWING	RESTRICTED TO			

Mouser Electronics

Authorized Distributor

Click to View Pricing, Inventory, Delivery & Lifecycle Information:

[TE Connectivity:](#)

[2238155-2](#)