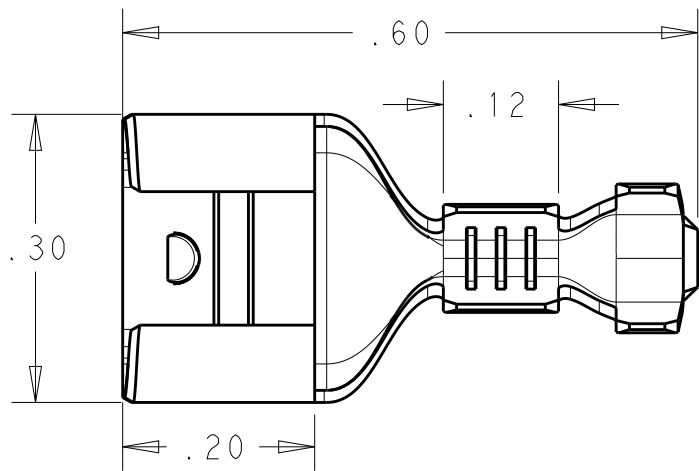
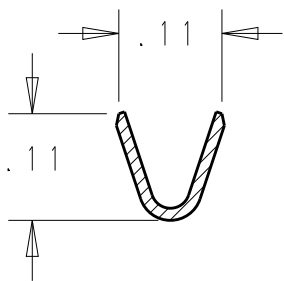
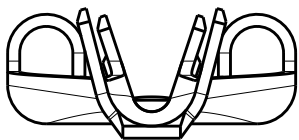
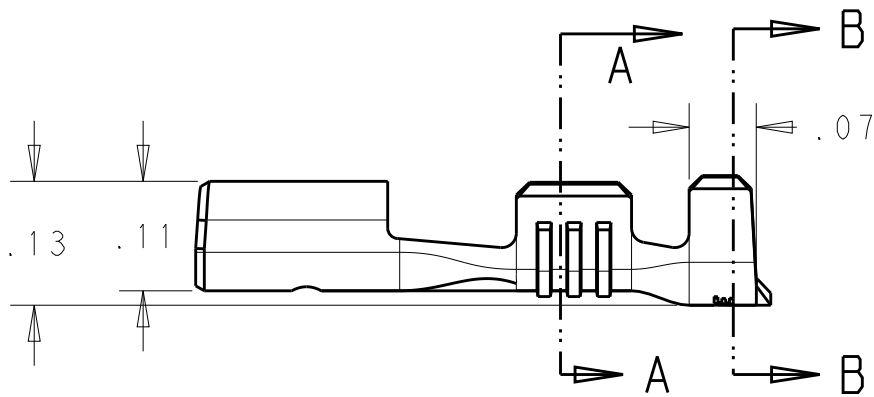


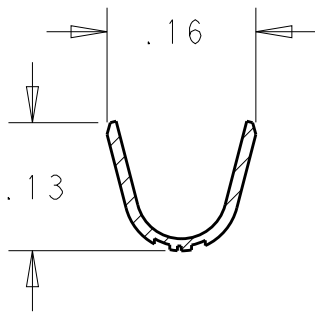
REVISIONS					
P	LTR	DESCRIPTION	DATE	DWN	APVD
	A	FIRST INITIAL	29JUN2016	HG	TD



- 1:APPLICABLE WIRE RANGE:22-18AWG
- 2:APPLICABLE INSULATION RANGE:DIAMETER 0.094~0.110
- 3:COUNTERPART:STANDARD 250 TAB WITH HOLE STRUCTURE
- 4:RAW MATERIAL STOCK THICKNESS: 0.0126INCH
- 5:RECOMMONDED MATING TAB THICKNESS:0.032INCH


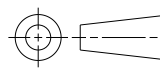


SECTION A - A



SECTION B - B

TIN-PLATED	BRASS	2238045-2
N/A	BRASS	2238045-3
FINISH	MATERIAL	PART NO.

THIS DRAWING IS A CONTROLLED DOCUMENT.		DWN Hogan Guo 29JUN2016	<div>TE Connectivity</div>			
DIMENSIONS: INCH		CHK Tim Ding 29JUN2016				
		APVD Tim Ding 29JUN2016				
		PRODUCT SPEC 108-106216				
MATERIAL BRASS	FINISH - SEE TABLE	APPLICATION SPEC 114-106216	SIZE A3	CAGE CODE -	DRAWING NO C-2238045	RESTRICTED TO -
		WEIGHT 0.67 GR				
		CUSTOMER DRAWING				
		SCALE 5:1	SHEET 1 OF 1	REV A		

Mouser Electronics

Authorized Distributor

Click to View Pricing, Inventory, Delivery & Lifecycle Information:

[TE Connectivity:](#)

[2238045-2](#)