

- 1

MATERIALS/FINISH:
CAGE ASSEMBLY - NICKEL-SILVER ALLOY, (0.25) THICK
EMI SPRINGS - COPPER ALLOY/2µm MIN TIN
FRONT FLANGE - ZINC ALLOY/3µm MIN TIN OVER 1.27µm MIN NICKEL OVER 5.08µm MIN COPPER
HEAT SINK - ALUMINUM/NICKEL
HEAT SINK CLIP - STAINLESS STEEL
LIGHT PIPE: CLEAR POLYCARBONATE
- 2

SPACING BETWEEN CAGES ON THE SAME PCB TO BE SPECIFIED BY THE CUSTOMER, MUST COMPLY WITH MINIMUM DIMENSION SHOWN
- 3

REFERENCE APPLICATION SPECIFICATION 114-32023 FOR RECOMMENDED DRILL HOLE DIAMETER AND PLATING THICKNESS
- 4

DATUMS AND BASIC DIMENSIONS ESTABLISHED BY CUSTOMER
- 5

HEAT SINKS AND CLIPS ARE SHIPPED ASSEMBLED, CAGE ASSEMBLY MAY BE PRESSED INTO THE PCB AS SHIPPED
- 6

DIMENSION APPLIES WITH MODULE INSERTED IN CAGE
- 7

UNPLATED THRU HOLE
- 8

MATES WITH QSFP MSA COMPATIBLE TRANSCEIVER
- 9

SURFACE TRACES PERMITTED WITHIN THIS AREA EXCEPT WHERE CAGE STANDOFFS CONTACT PCB
- 10

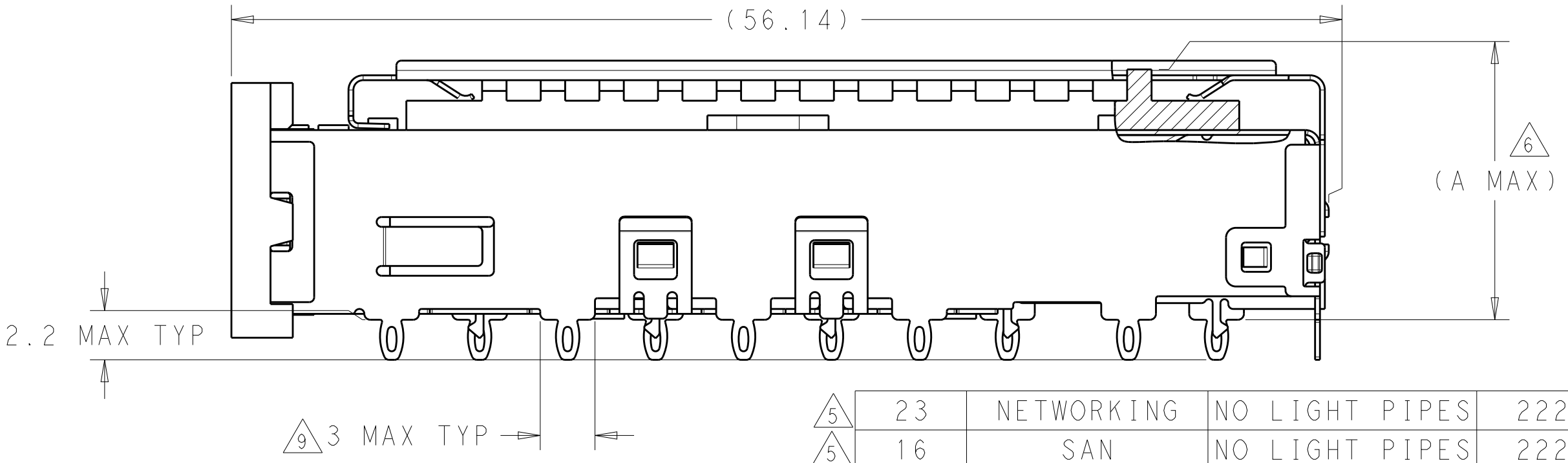
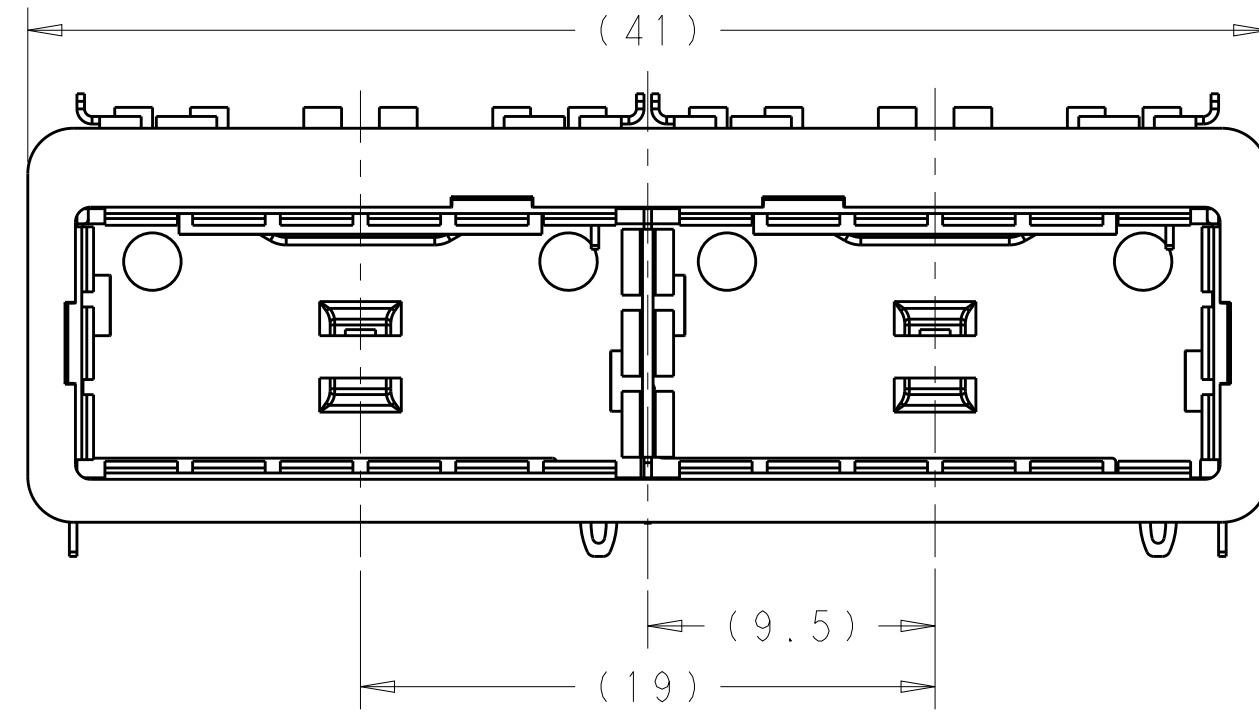
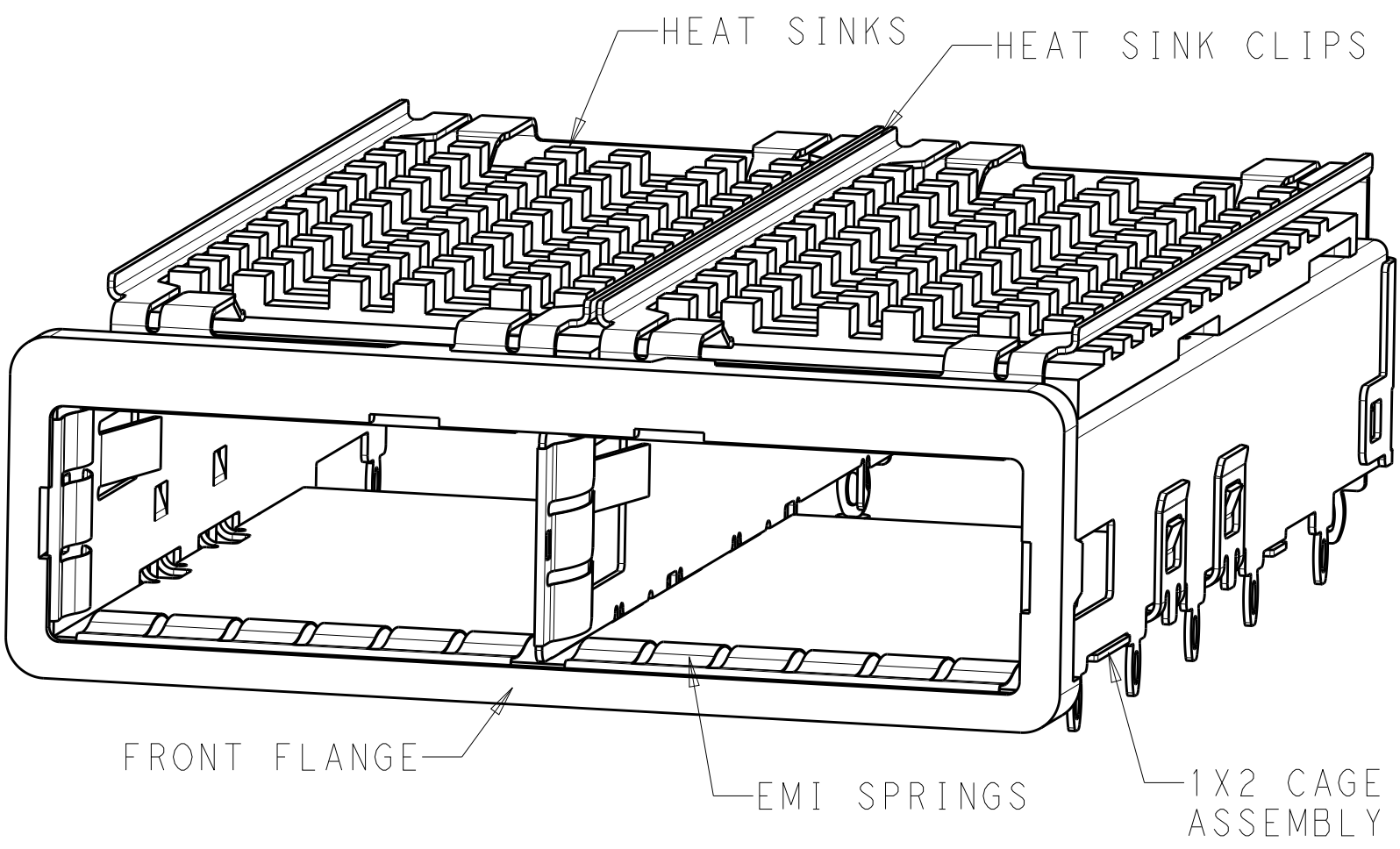
BASELINE FOR THESE DIMENSIONS IS THE CENTER OF COMPLIANT PIN HOLE
- 11

DATE CODE (YYWWD) IS MARKED ON TOP OF CAGE BUT IS CONCEALED BY HEAT SINKS, APPLIES TO CAGE ASSEMBLY ONLY
- 12

REFERENCE APPLICATION SPECIFICATION 114-32023 FOR GASKET THICKNESS CALCULATION
- 13

HEAT SINKS, LIGHT PIPES AND CLIPS ARE SHIPPED ASSEMBLED, CAGE ASSEMBLY MAY BE PRESSED INTO THE PCB AS SHIPPED.
- 14

HEAT SINKS AND CLIPS SHIPPED ASSEMBLED TO CAGE ASSEMBLY. CAGE ASSEMBLY MAY BE PRESSED INTO THE PCB AS SHIPPED. LIGHT PIPES, SHIPPED UNATTACHED, MUST BE ASSEMBLED BY CUSTOMER AFTER THE CAGE IS SEATED IN THE PCB.



5	23	NETWORKING	NO LIGHT PIPES	2227103-3
5	16	SAN	NO LIGHT PIPES	2227103-2
5	13.7	PCI	NO LIGHT PIPES	2227103-1
	A	HEAT SINK PROFILE	DESCRIPTION	PART NUMBER

THIS DRAWING IS A CONTROLLED DOCUMENT. DIMENSIONING AND TOLERANCING PER ASME Y14.5M-2009

DIMENSIONS: mm

MATERIAL

SEE NOTES

TOLERANCES UNLESS OTHERWISE SPECIFIED:

0 PLC	±0.2
1 PLC	±0.15
2 PLC	±0.1
3 PLC	±0.05
4 PLC	±0.025
ANGLES	±1
FINISH	

SEE NOTES

DWN: M.E. COWHER 10AUG2012

CHK: R.R. HENRY 16AUG2012

APVD: R.R. HENRY 16AUG2012

PRODUCT SPEC: 108-19428

APPLICATION SPEC: 114-32023

WEIGHT: -

Customer Drawing

TE Connectivity

NAME: RECEPTACLE ASSEMBLY WITH HEAT SINKS, BEHIND BEZEL, 1X2, QSFP28

SIZE: A2 CAGE CODE: 00779 DRAWING NO: C-2227103

RESTRICTED TO: -

SCALE: 4:1 SHEET: 1 OF 8 REV: B

THIS DRAWING IS UNPUBLISHED.

RELEASED FOR PUBLICATION20

© COPYRIGHT 20BY -ALL RIGHTS RESERVED.

LOC	DIST	REVISIONS				
P	LTR	DESCRIPTION	DATE	DWN	APVD	
	-	SEE SHEET 1	-	-	-	

D

D

C

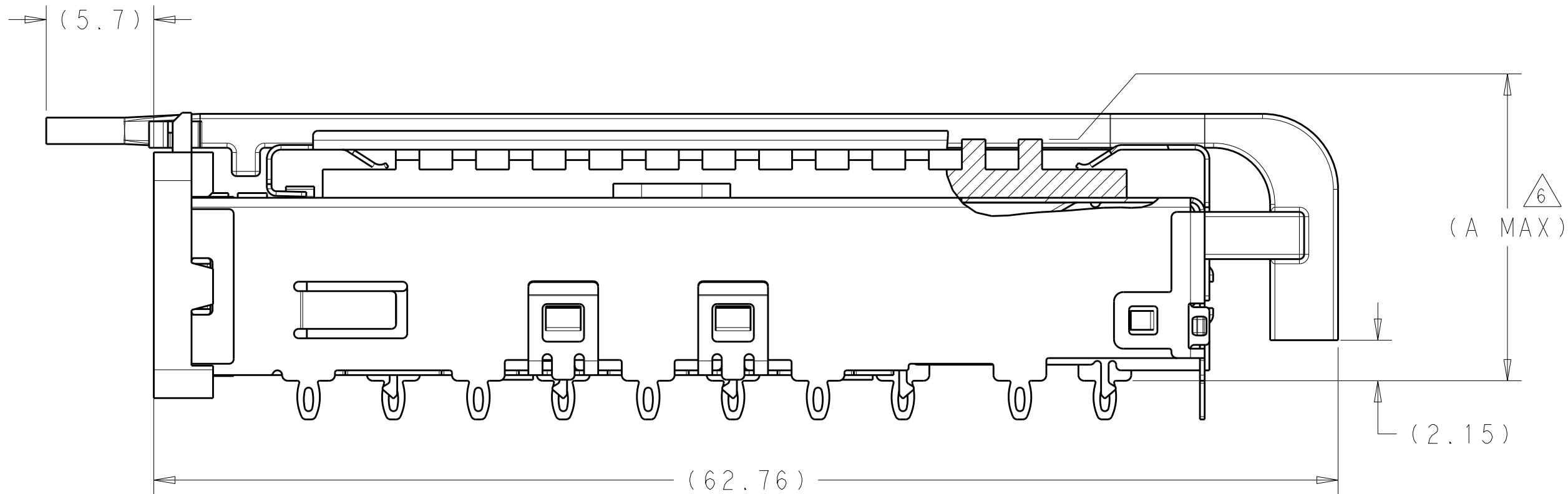
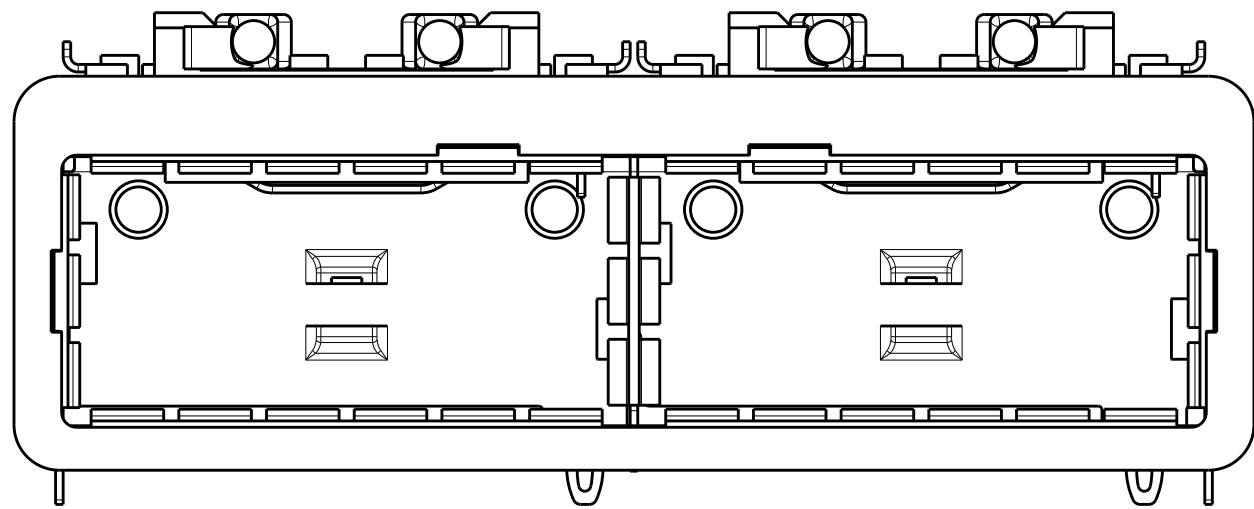
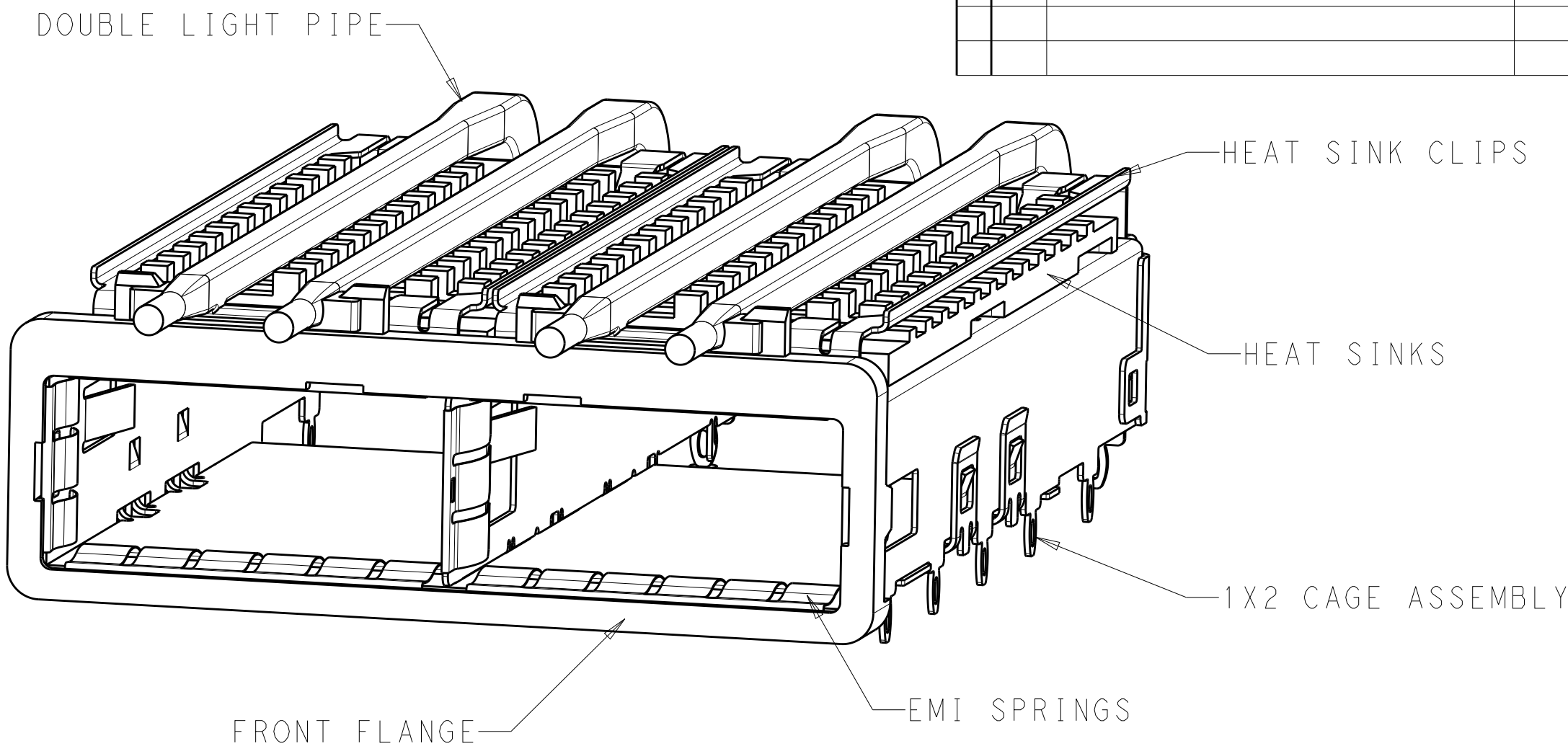
C

B

B

A

A



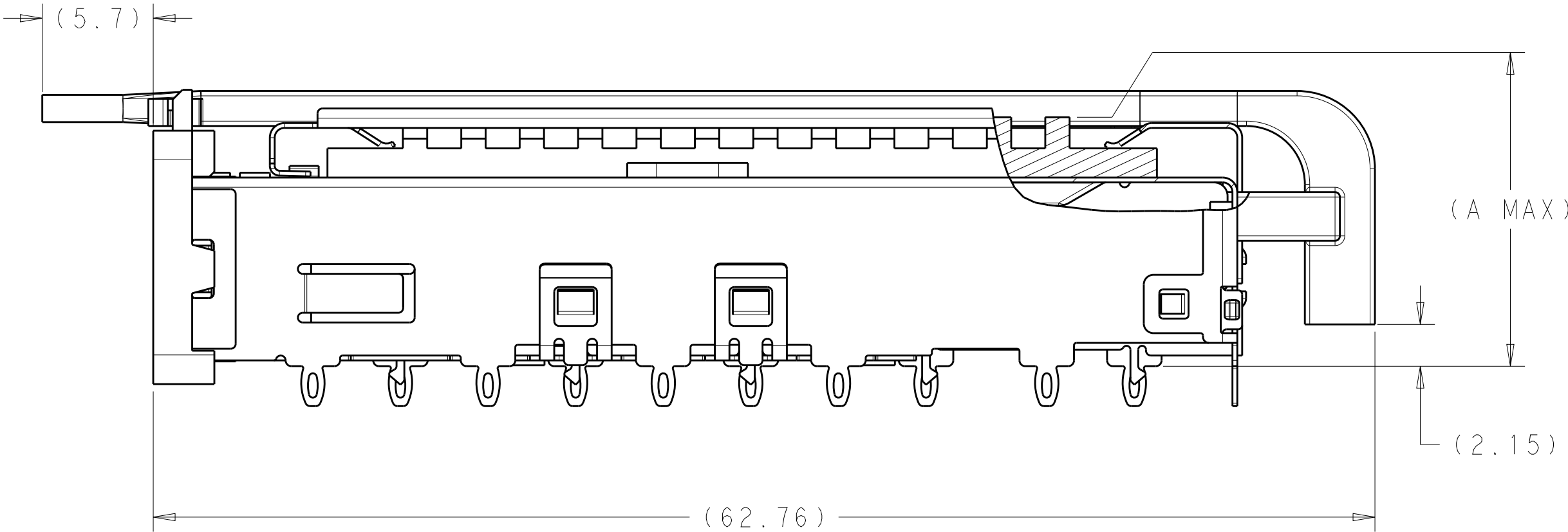
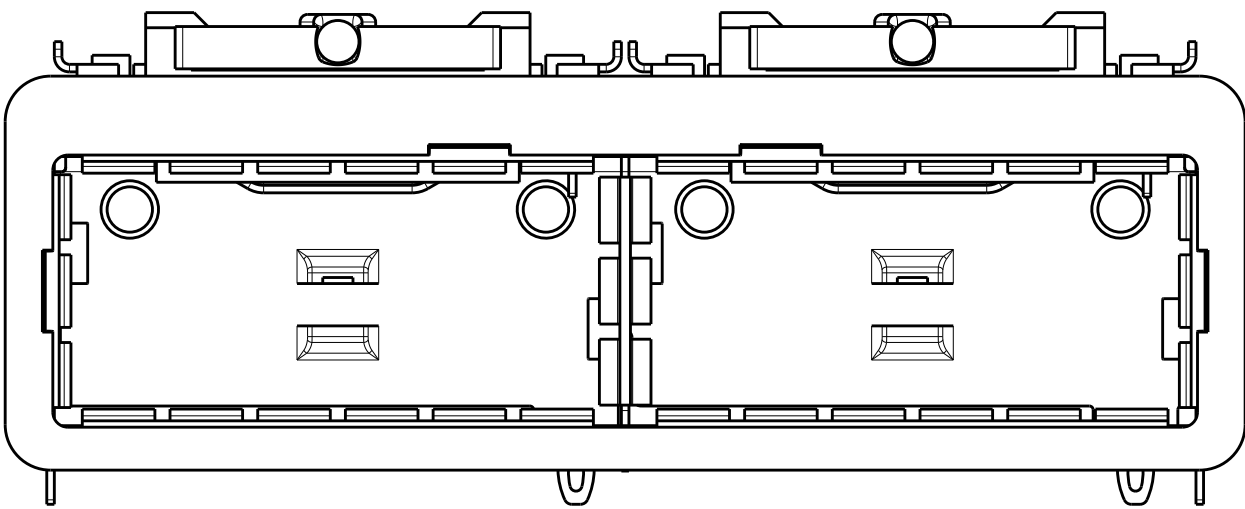
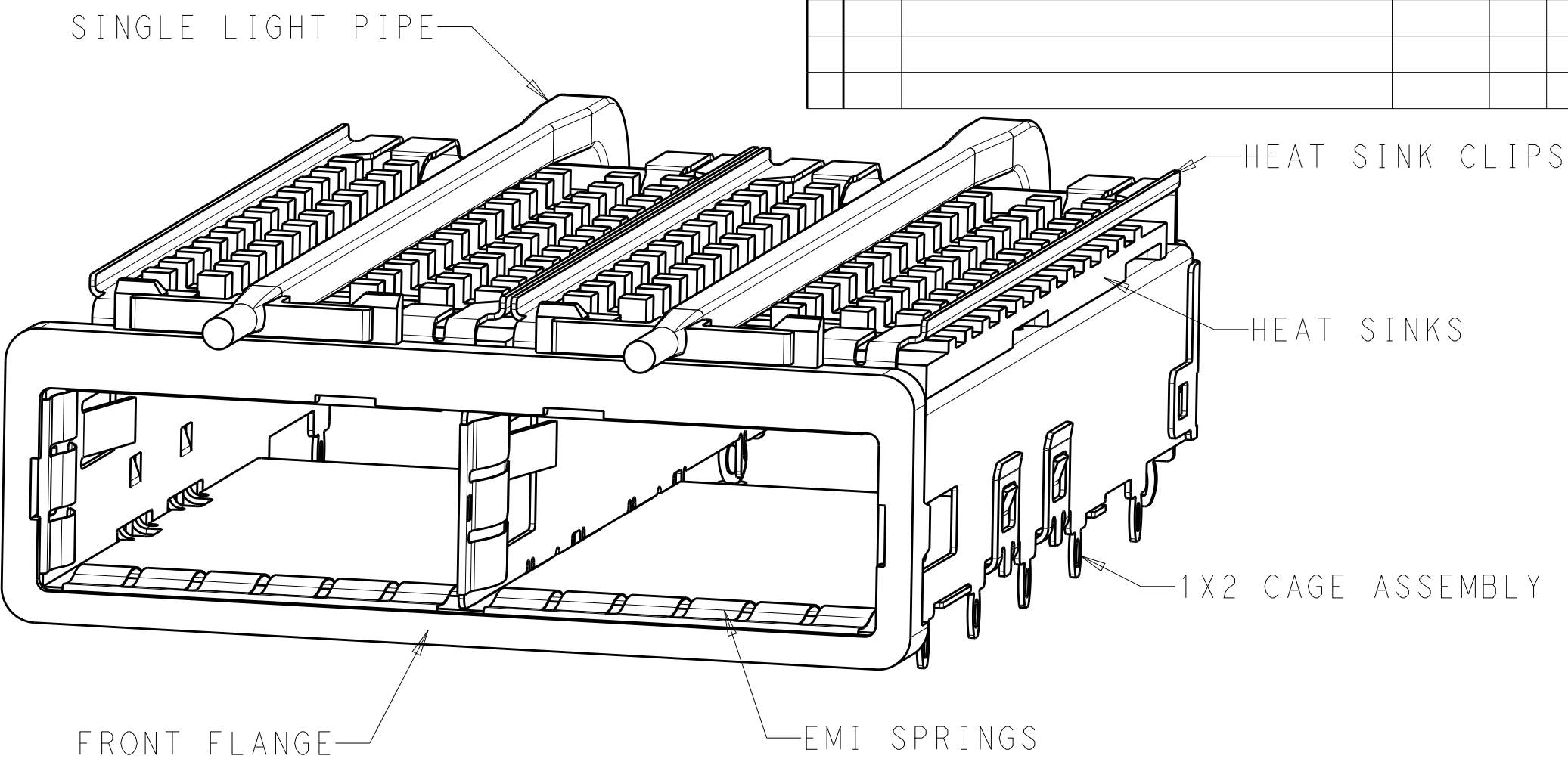
ALL DIMENSIONS THE SAME AS ON SHEET 1
EXCEPT AS SHOWN

PROPOSAL DESIGN: 2227103-4/5/6,
HAVE NOT RELEASED, ANY QUESTIONS,
PLEASE CONTACT RESPONSIBLE ENGINEER.

13	23	NETWORKING	DOUBLE LIGHT PIPES	2227103-6
13	16	SAN	DOUBLE LIGHT PIPES	2227103-5
14	13.7	PCI	DOUBLE LIGHT PIPES	2227103-4
	A	HEAT SINK PROFILE	DESCRIPTION	PART NUMBER

THIS DRAWING IS A CONTROLLED DOCUMENT.		DWN M.E. COWHER 10AUG2012	TE Connectivity	
DIMENSIONS: mm		CHK R.R. HENRY 16AUG2012		
TOLERANCES UNLESS OTHERWISE SPECIFIED:		APVD R.R. HENRY 16AUG2012	NAME RECEPTACLE ASSEMBLY WITH HEAT SINKS, BEHIND BEZEL, 1X2, QSFP28	
0 PLC ±0.2 1 PLC ±0.15 2 PLC ±0.1 3 PLC ±0.05 4 PLC ±0.025 ANGLES ±1		PRODUCT SPEC 108-19428		
MATERIAL SEE NOTES material_2		APPLICATION SPEC 114-32023	SIZE A200779	
FINISH SEE NOTES finish_spec_2		WEIGHT -	DRAWING NO C-2227103	
		Customer Drawing	SCALE 4:1	SHEET 1 OF 8
			REV B	

LOC	DIST	REVISIONS					
		P	LTR	DESCRIPTION	DATE	DWN	APVD
			-	SEE SHEET 1	-	-	-

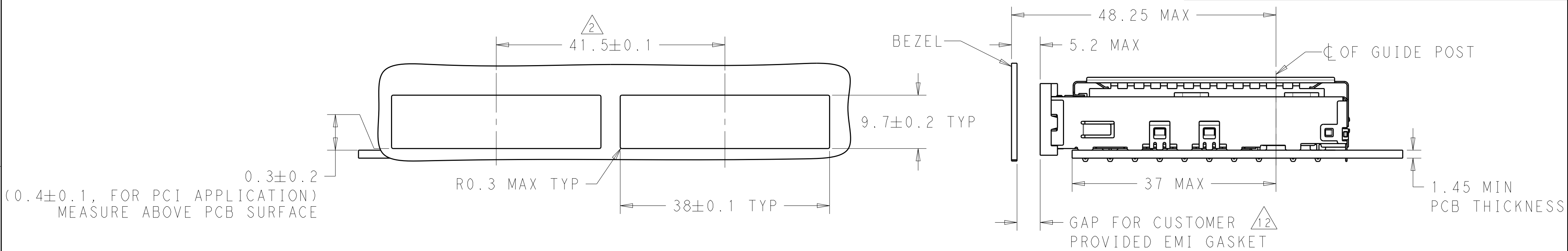


ALL DIMENSIONS THE SAME AS ON SHEET 1
EXCEPT AS SHOWN

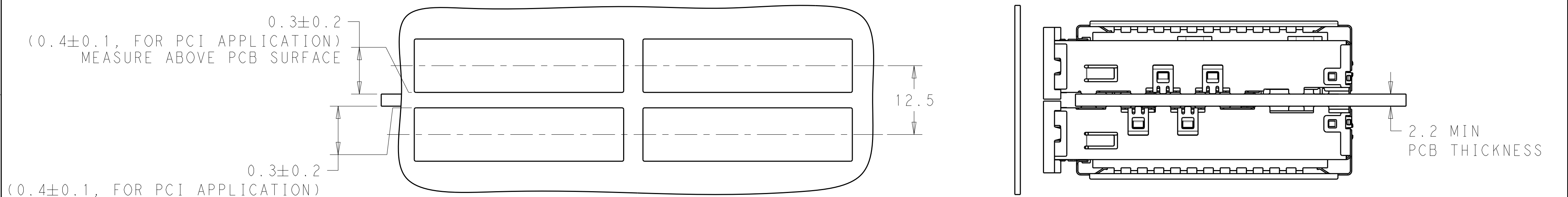
13	23	NETWORKING	SINGLE LIGHT PIPES	2227103-9
13	16	SAN	SINGLE LIGHT PIPES	2227103-8
14	13.7	PCI	SINGLE LIGHT PIPES	2227103-7
	A	HEAT SINK PROFILE	DESCRIPTION	PART NUMBER

PROPOSAL DESIGN: 2227103-7/8/9,
HAVE NOT RELEASED. ANY QUESTIONS,
PLEASE CONTACT RESPONSIBLE ENGINEER.

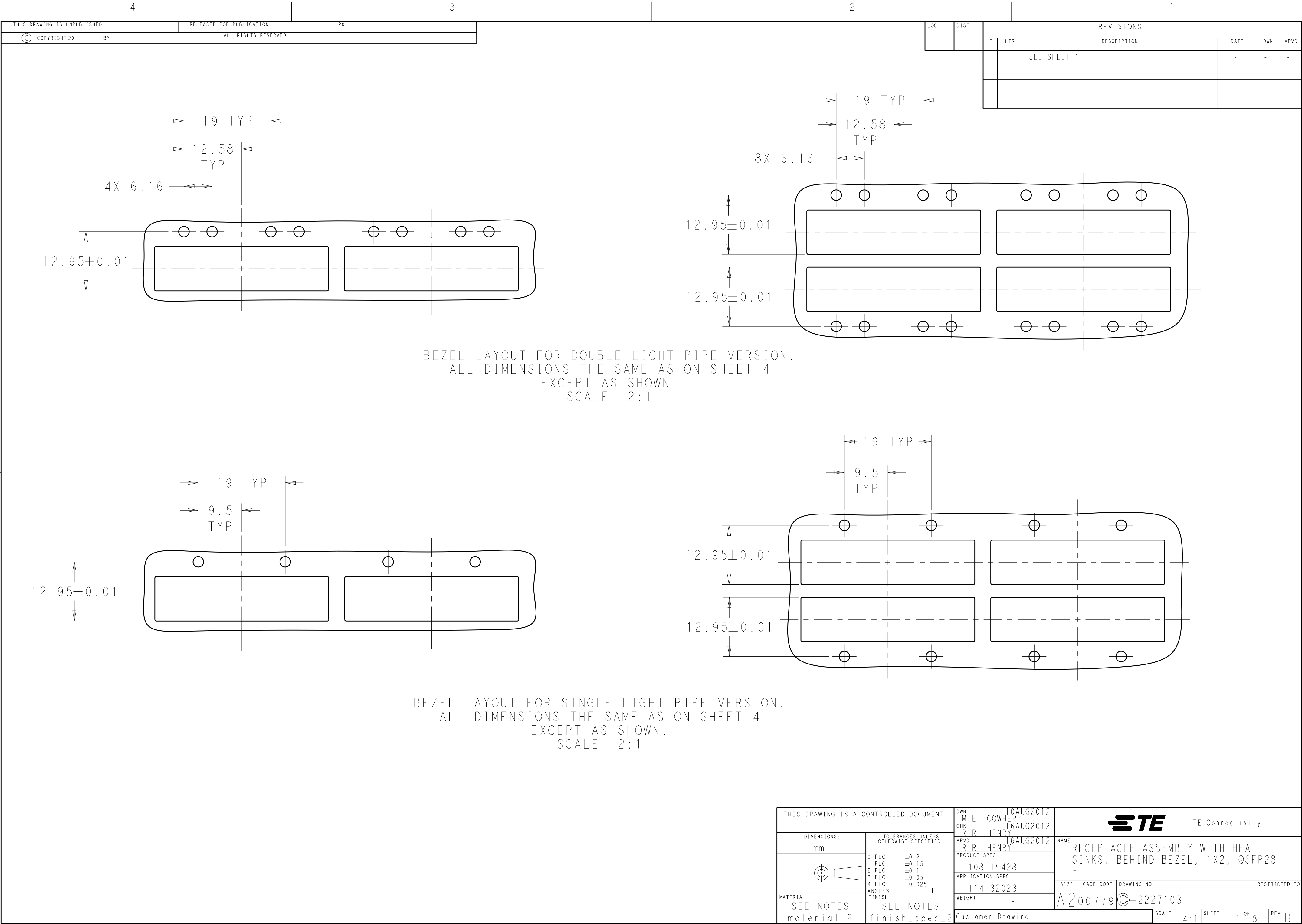
THIS DRAWING IS A CONTROLLED DOCUMENT.		DWN M.E. COWHER 10AUG2012	TE Connectivity	
DIMENSIONS:		CHK R.R. HENRY 16AUG2012		
mm	TOLERANCES UNLESS OTHERWISE SPECIFIED:	APVD R.R. HENRY 16AUG2012	NAME RECEPTACLE ASSEMBLY WITH HEAT SINKS, BEHIND BEZEL, 1X2, QSFP28	
	0 PLC ±0.2	PRODUCT SPEC	SIZE	
	1 PLC ±0.15	108-19428	CAGE CODE	
	2 PLC ±0.1	APPLICATION SPEC	DRAWING NO	
MATERIAL	3 PLC ±0.05	114-32023	RESTRICTED TO	
	4 PLC ±0.025	WEIGHT	A200779	
SEE NOTES material_2	SEE NOTES finish_spec_2	Customer Drawing	SCALE 4:1	SHEET 1 OF 8 REV B

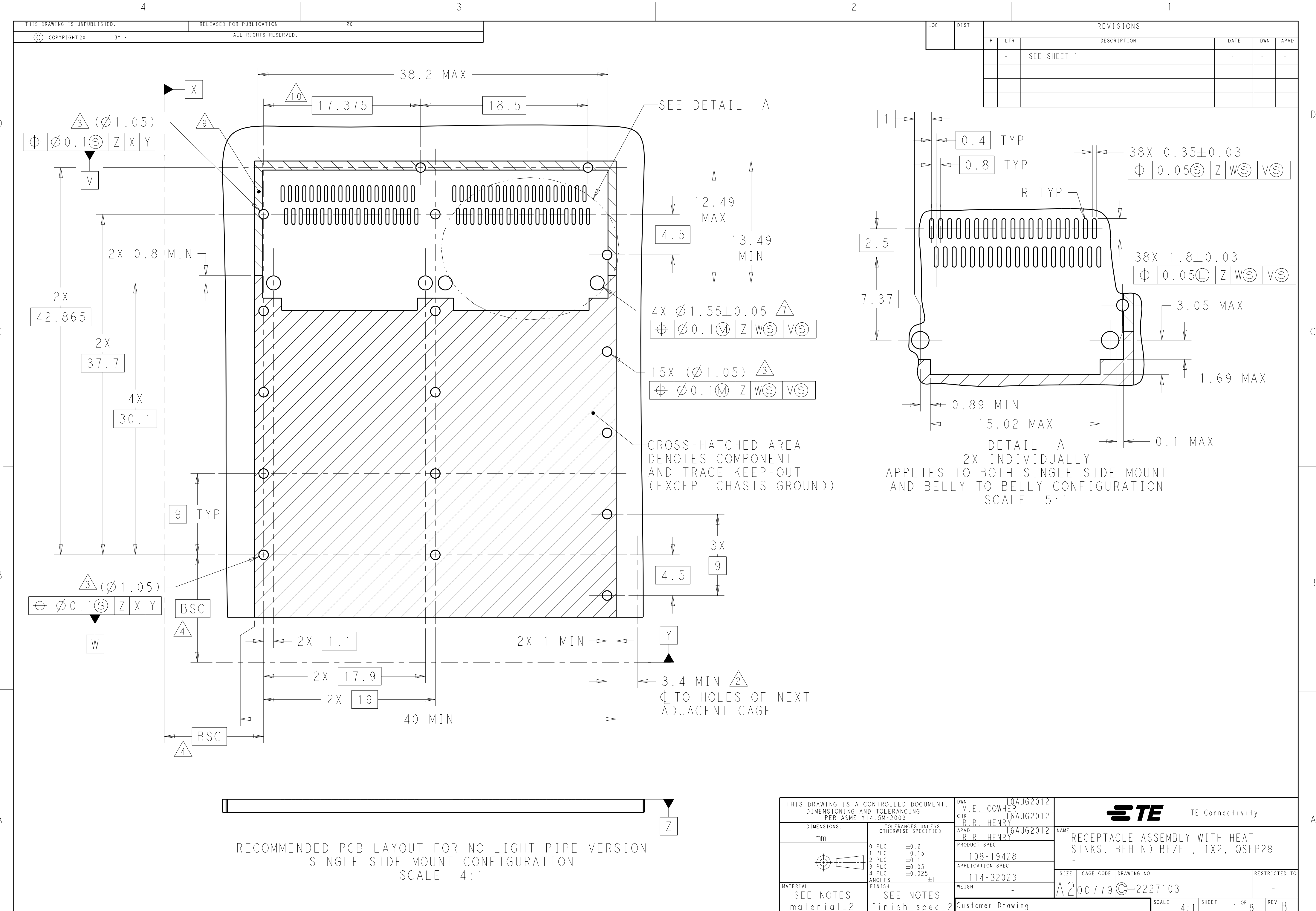


SINGLE SIDE CONFIGURATION
SCALE 2:1

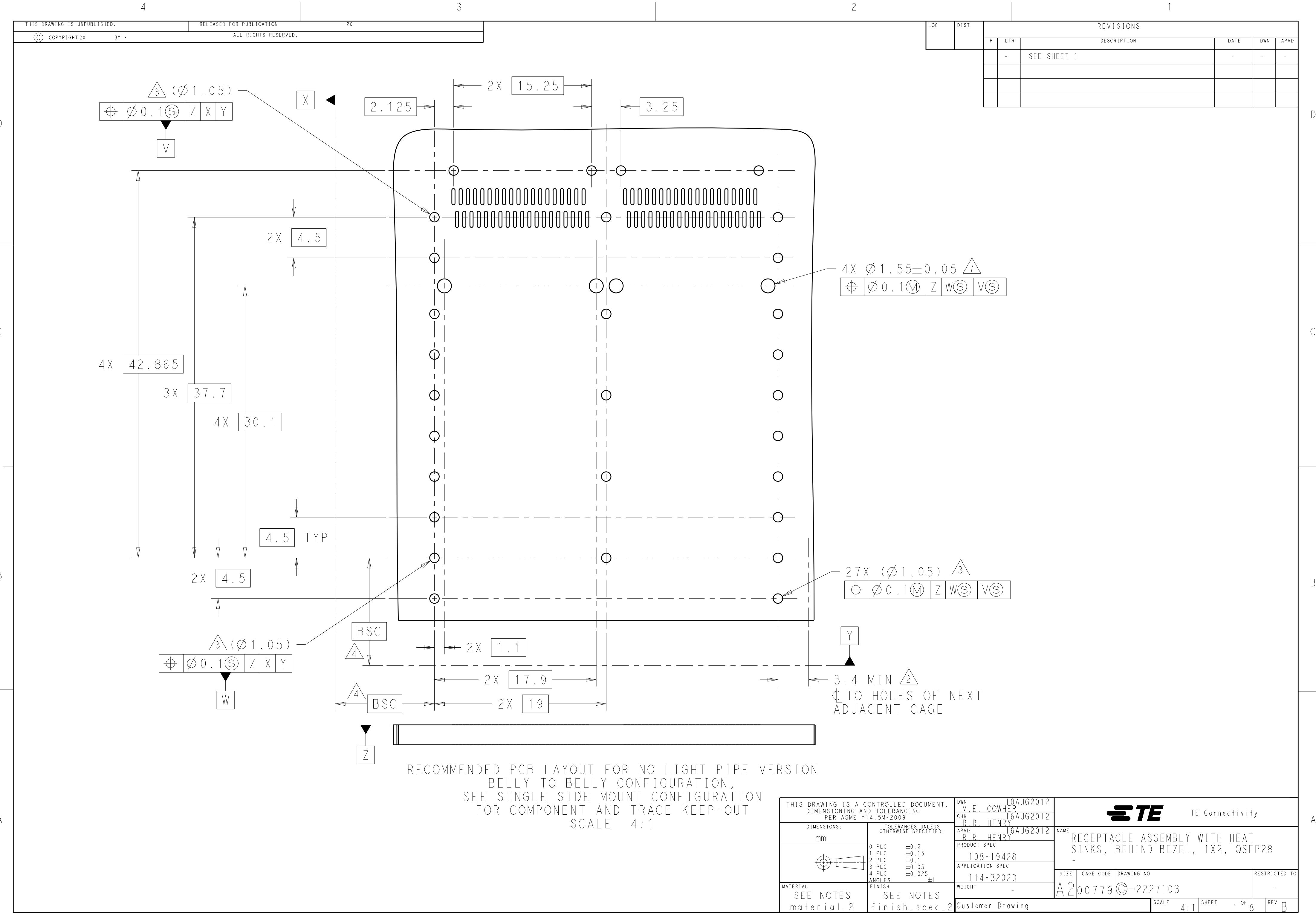


BELLY TO BELLY CONFIGURATION
SAME AS SINGLE SIDED CONFIGURATION EXCEPT AS SHOWN
SCALE 2:1





THIS DRAWING IS UNPUBLISHED.				RELEASED FOR PUBLICATION				20				LOC		DIST		REVISIONS						
© COPYRIGHT 20				BY -				ALL RIGHTS RESERVED.								P	LTR	DESCRIPTION		DATE	DWN	APVD
																		SEE SHEET 1				

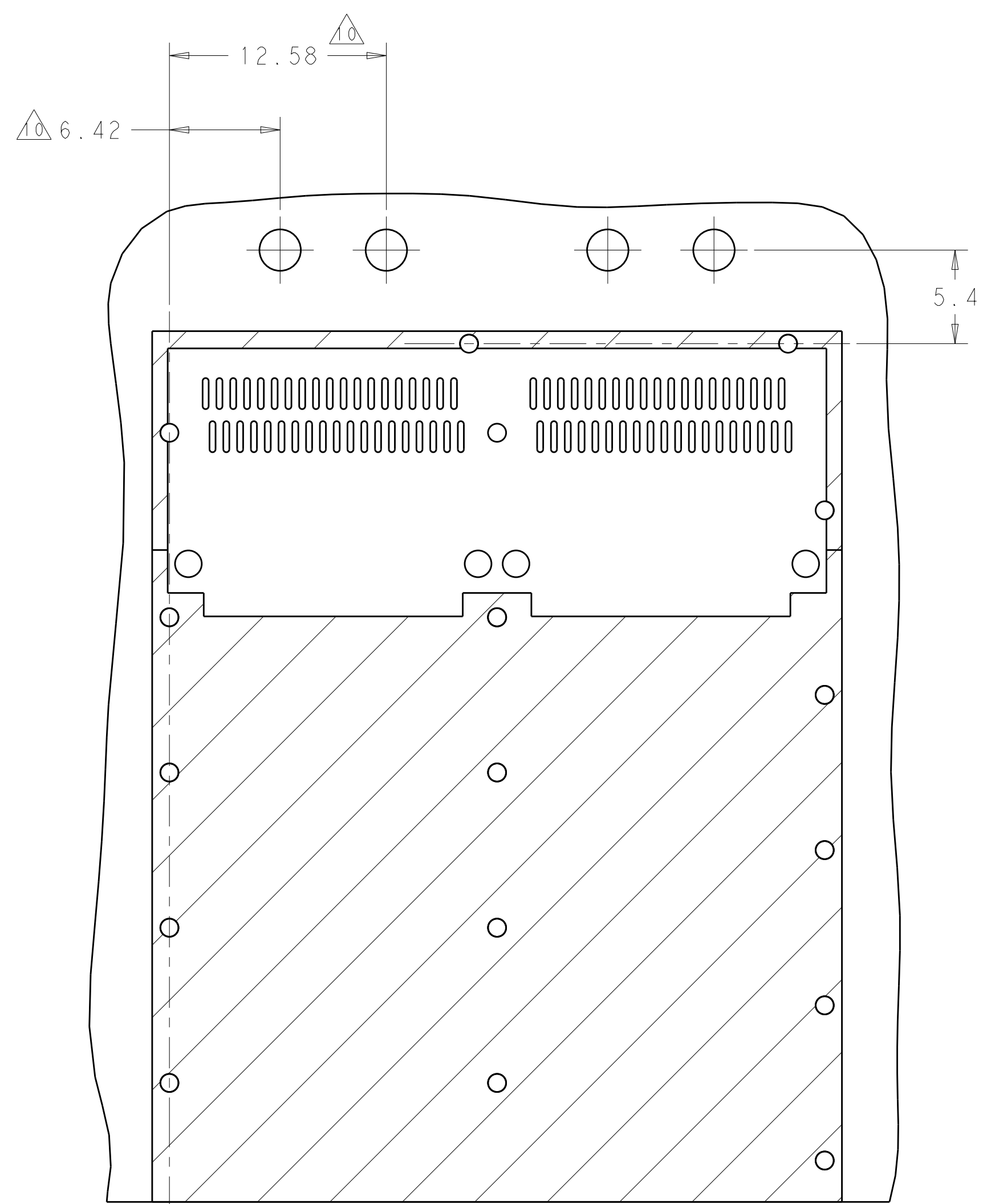


THIS DRAWING IS UNPUBLISHED.

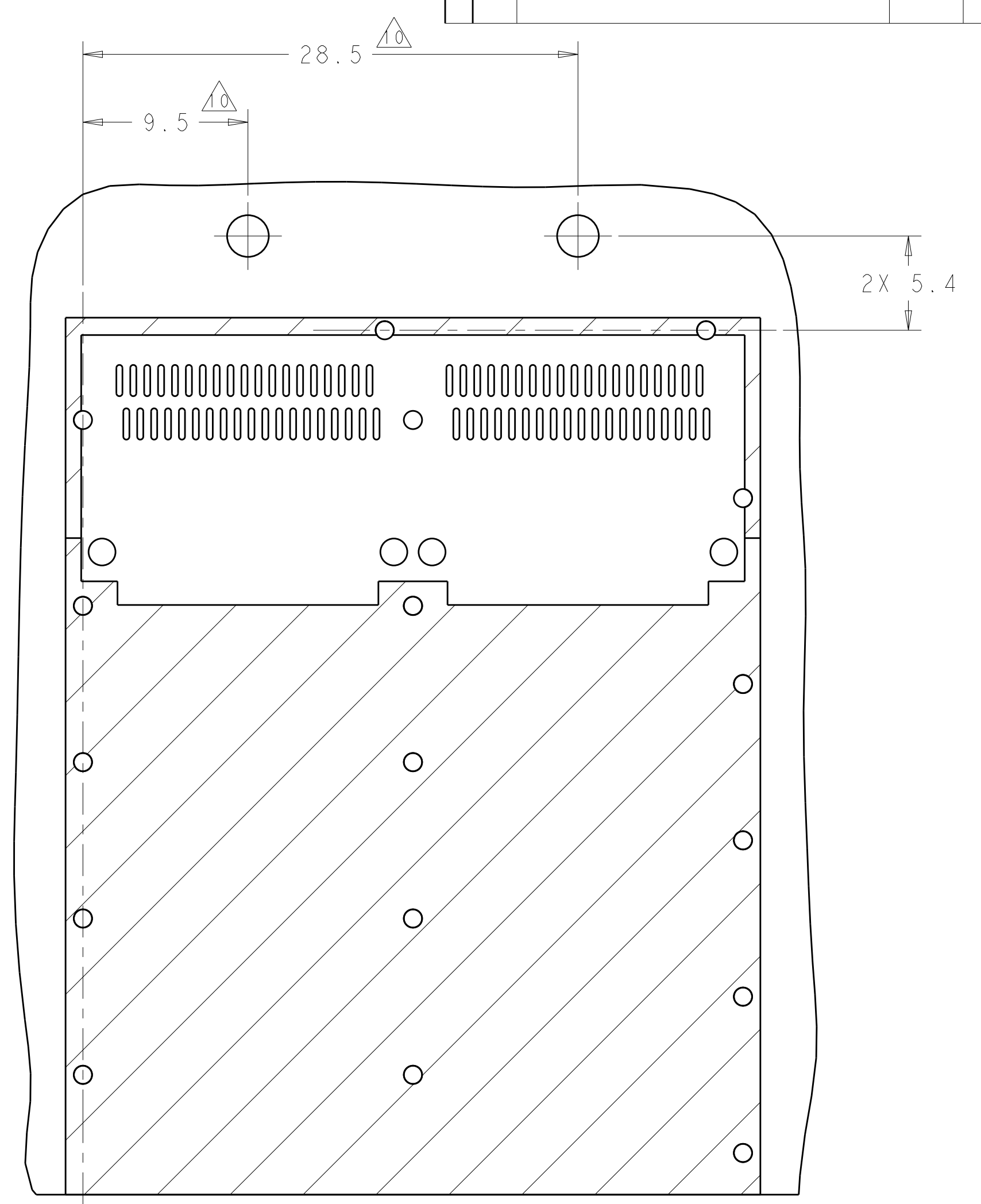
RELEASED FOR PUBLICATION20

© COPYRIGHT 20BY -ALL RIGHTS RESERVED.

LOC	DIST	REVISIONS				
P	LTR	DESCRIPTION	DATE	DWN	APVD	
-	-	SEE SHEET 1	-	-	-	



RECOMMENDED PCB LAYOUT FOR DOUBLE LIGHT PIPE VERSION.
VIEW DEPICTS LOCATION OF LEDS FOR DOUBLE LIGHT PIPES ONLY.
APPLIES TO BOTH SINGLE SIDED AND BELLY TO BELLY APPLICATIONS.
SCALE 4:1



RECOMMENDED PCB LAYOUT FOR SINGLE LIGHT PIPE VERSION.
VIEW DEPICTS LOCATION OF LEDS FOR SINGLE LIGHT PIPES ONLY.
APPLIES TO BOTH SINGLE SIDED AND BELLY TO BELLY APPLICATIONS.
SCALE 4:1

THIS DRAWING IS A CONTROLLED DOCUMENT.		DWN M.E. COWHER 10AUG2012	TE Connectivity	
		CHK R.R. HENRY 16AUG2012		
DIMENSIONS: mm		APVD R.R. HENRY 16AUG2012	NAME RECEPTACLE ASSEMBLY WITH HEAT SINKS, BEHIND BEZEL, 1X2, QSFP28	
		PRODUCT SPEC 108-19428	SIZE A200779	
		APPLICATION SPEC 114-32023	CAGE CODE C-2227103	
MATERIAL SEE NOTES material_2	FINISH SEE NOTES finish_spec_2	WEIGHT -	DRAWING NO Customer Drawing	
			RESTRICTED TO -	SCALE 4:1 SHEET 1 OF 8 REV B

Mouser Electronics

Authorized Distributor

Click to View Pricing, Inventory, Delivery & Lifecycle Information:

[TE Connectivity:](#)

[2227103-3](#)