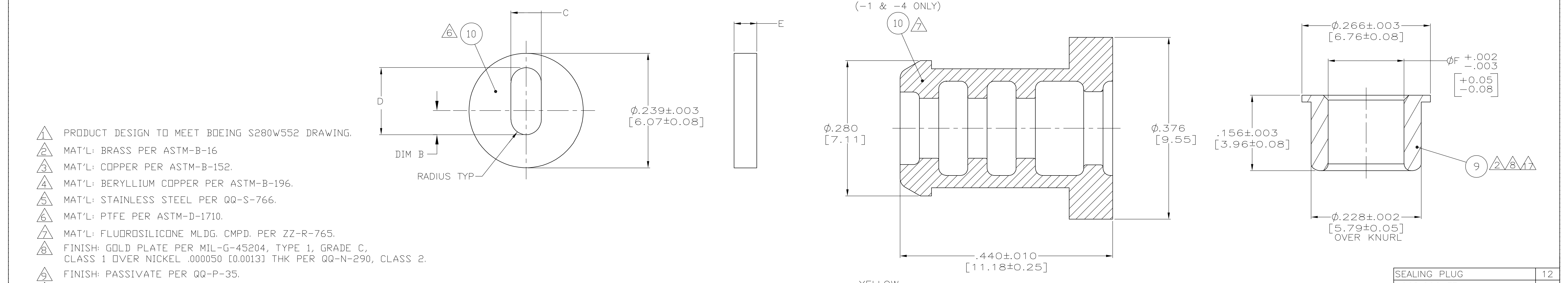
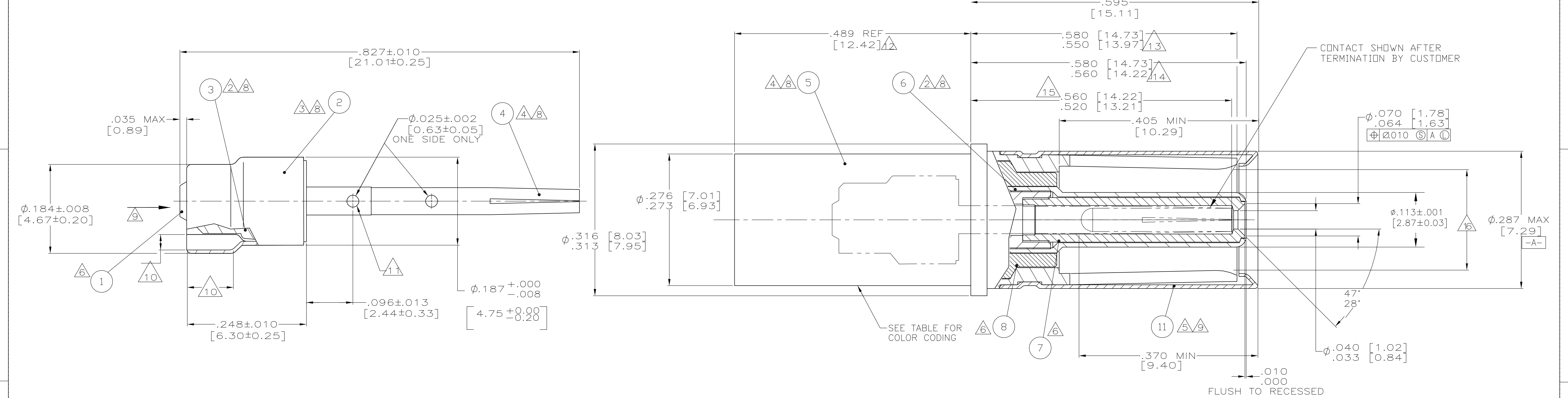


8		7		6		5		4		3		2		1	
THIS DRAWING IS UNPUBLISHED.				RELEASED FOR PUBLICATION											
(C) COPYRIGHT BY TYCO ELECTRONICS CORPORATION. ALL RIGHTS RESERVED.															
PART NO		CABLE		COLOR CODE	DIM F	DIM B	DIM C	DIM D	DIM E	REMARKS					
222191-1		M17-176-00002; NORTHROP 05A078-1		VIEW S	.143 [3.63]	.032 [0.81]	.054 [1.37]	.112 [2.84]	.047 [1.19]						
222191-2		M17-176-00002; NORTHROP 05A078-1		VIEW S	.143 [3.63]	.032 [0.81]	.054 [1.37]	.112 [2.84]	.047 [1.19]						
222191-3		TENSOLITE 24463/9P025X-2(LD) OR TENSOLITE 24463/9B017X-2(LD) (OBSOLETE)		VIEW U	.157 [3.99]	.050 [1.27]	.063 [1.60]	.140 [3.56]	.052 [1.32]			OBSOLETE			
222191-4		M17-176-00002; NORTHROP 05A078-1		VIEW S	.143 [3.63]	.032 [0.81]	.054 [1.37]	.112 [2.84]	.047 [1.19]						
222191-5		TENSOLITE 24463/9P025X-2(LD) OR TENSOLITE 24463/9B017X-2(LD) (OBSOLETE)		VIEW U	.157 [3.99]	.050 [1.27]	.063 [1.60]	.140 [3.56]	.052 [1.32]						
222191-6		PRELIMINARY NOT RELEASED FOR PRODUCTION													
222191-7		PRELIMINARY NOT RELEASED FOR PRODUCTION													
222191-8		RAYCHEM 10614		VIEW S	.174 [4.42]	.032 [0.81]	.054 [1.37]	.112 [2.84]	.047 [1.19]						



1 PRODUCT DESIGN TO MEET BOEING S280W552 DRAWING.

2 MAT'L: BRASS PER ASTM-B-16

3 MAT'L: COPPER PER ASTM-B-152.

4 MAT'L: BERYLLIUM COPPER PER ASTM-B-196.

5 MAT'L: STAINLESS STEEL PER QQ-S-766.

6 MAT'L: PTFE PER ASTM-D-1710.

7 MAT'L: FLUDROSILICONE MLDG. CMPD. PER ZZ-R-765.

8 FINISH: GOLD PLATE PER MIL-G-45204, TYPE 1, GRADE C, CLASS 1 OVER NICKEL .000050 [0.0013] THK PER QQ-N-290, CLASS 2.

9 FINISH: PASSIVATE PER QQ-P-35.

10 A .0285 [0.72] GAGE PIN MUST ENTER FOR A LENGTH OF .085 [2.16] MIN.

11 .028 [0.71] GD - .031 [0.79] NO GD GAGE WILL ENTER TO A DEPTH OF FIRST SIGHT HOLE.

12 .533 [13.54] MAX AFTER TERMINATION TO CABLE. TO END OF OUTER SOCKET CONTACT.

13 TO END OF INTERMEDIATE PIN CONTACT AND CENTER SOCKET INSULATOR.

14 TO END OF CENTER SOCKET CONTACT.

15 MATES WITH .218 #001 [5.53 #0.03] DIA PIN.

16 160 DP. FULL DIAMOND KNURL OVER THIS LENGTH.

17 COLOR CODE PER MIL-C-39029. COLOR CODE BANDS CAN BE LOCATED ANYWHERE BETWEEN THE .200 [5.08] MIN AND .005 [0.13] MIN DIMS. BAG MARKED WITH CUST. P/N 05A076-1. (-1 & -2 ONLY.)

18 BAG MARKED WITH CUST. P/N S280W552-105, (FOR -3 ONLY.)

19 BAG MARKED WITH CUST. P/N S280W552-205, (FOR -5 ONLY.)

VIEW U

SCALE 5:1

VIEW S

SCALE 5:1

SEALING PLUG	12
HOOD, SOCKET	11
BUSHING	10
FERRULE	9
DIELECTRIC, OUTER, FRONT	8
DIELECTRIC	7
CONTACT, INTERMEDIATE, SIZE 8	6
SHELL, OUTER, SOCKET	5
CONTACT, SOCKET	4
SHELL, CRIMP END	3
FERRULE	2
DIELECTRIC	1

THIS DRAWING IS A CONTROLLED DOCUMENT.		DWN T. THOMPSON 10-26-94	Tyco Electronics Corporation Harriaburg, PA 17105-3608	
CHK C. SHELLEY 10-28-94				
APVD C. SHELLEY 10-28-94	NAME			
PRODUCT SPEC	APPLICATION SPEC			
SIZE	CAGE CODE	DRAWING NO	RESTRICTED TO	
A1	00779	222191	-	
CUSTOMER DRAWING		SCALE 10:1	SHEET 1 OF 1	REV L

Mouser Electronics

Authorized Distributor

Click to View Pricing, Inventory, Delivery & Lifecycle Information:

[TE Connectivity:](#)

[222191-4](#)