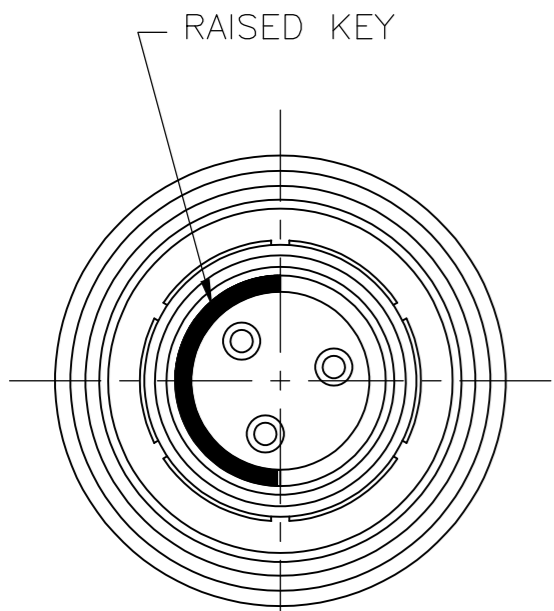
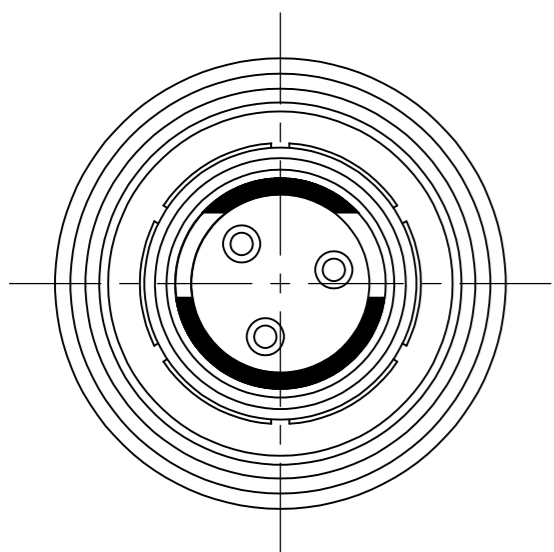


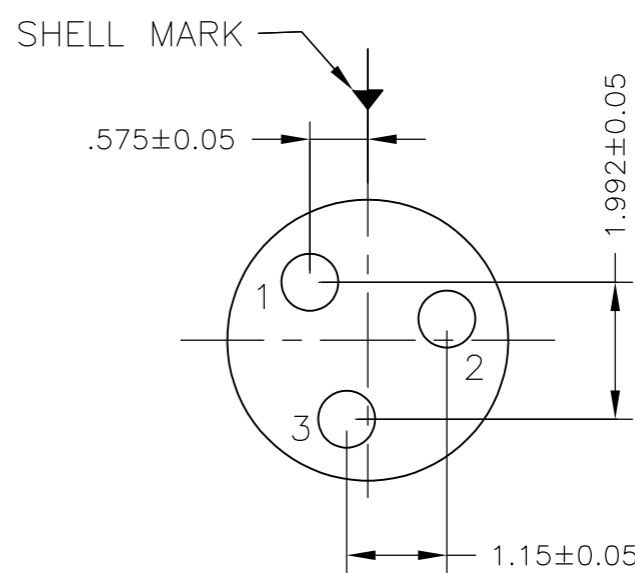
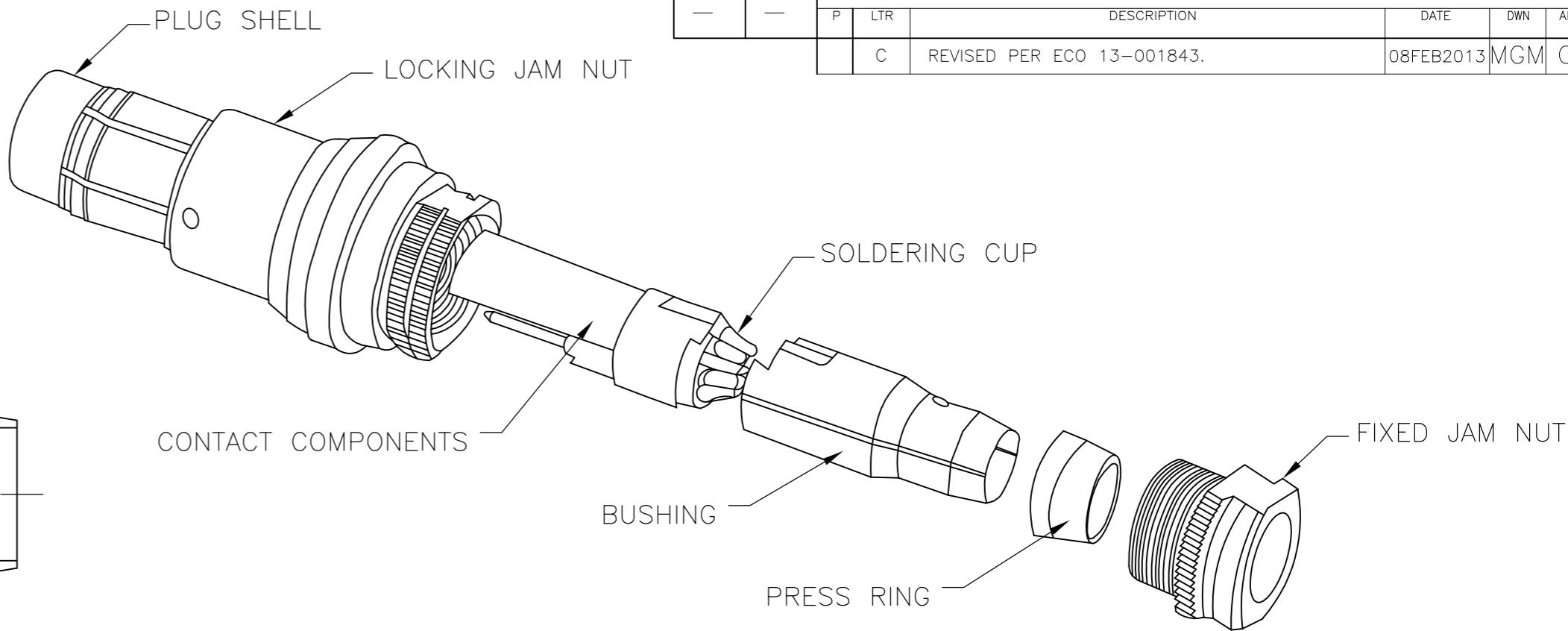
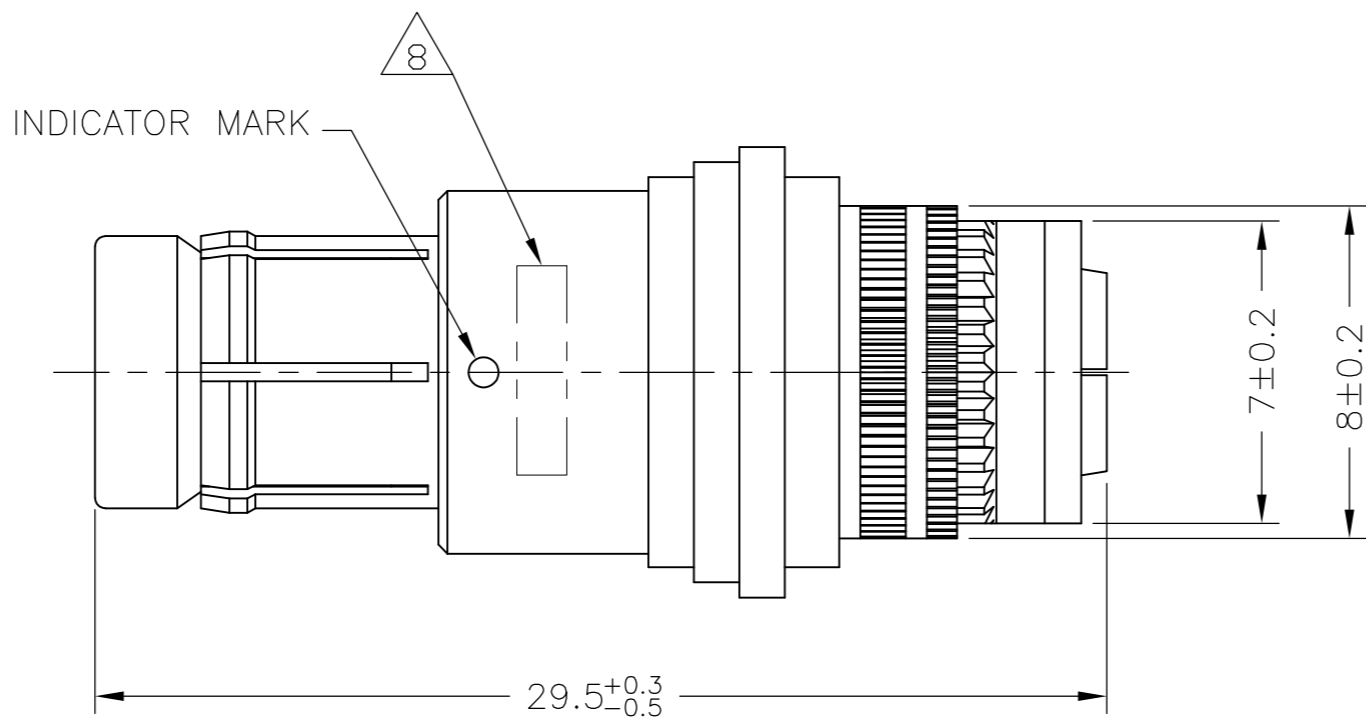
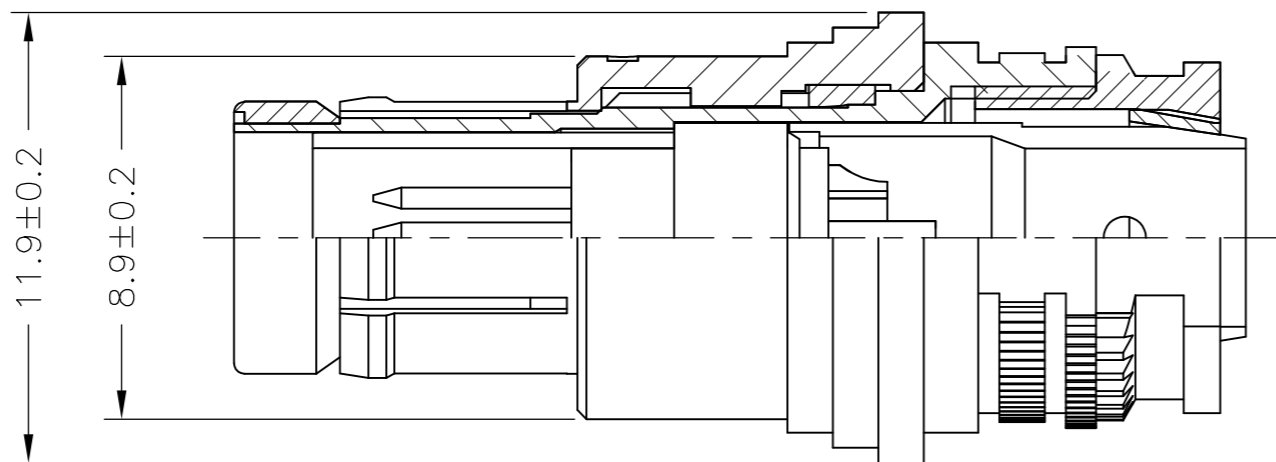
LOC	DIST	REVISIONS				
		P	LTR	DESCRIPTION	DATE	DWN
-	-	C		REVISED PER ECO 13-001843.	08FEB2013	MGM
						CT



SINGLE POLARIZATION



DOUBLE POLARIZATION



CAVITY IDENTIFICATION WHEN VIEWED FROM MATING FACE

1. UNLESS OTHERWISE SPECIFIED DIMENSIONS TOLERANCE ARE ± 0.20 .
2. DWV RATING: 875VAC @ SEA LEVEL
3. WORKING TEMPERATURE: $-55^{\circ}\text{C} \sim +125^{\circ}\text{C}$

4 MATERIAL:
CONTACT : COPPER ALLOY
SHELL : COPPER ALLOY
INSULATOR : PEEK



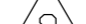



5 FINISH
CONTACT: GOLD OVER NICKEL
SHELL : BLACK CHROMIUM

6. WIRE SIZE: 22 AWG MAX.
7. MATING STYLE – PUSH TO MATE; PULL TO UNLOCK

8 PART IS MARKED WITH THE TE PART NUMBER, CHINA, DATE CODE, AND LOT ID.

9 ALL TOLERANCES TO BE ± 0.20 MM UNLESS NOTED.

CHROMIUM-BLACK	DOUBLE	SOLDERING	1	2157739-2
CHROMIUM-BLACK	SINGLE	SOLDERING	1	2157739-1
FINISH	POLARIZATION	TERMINATION	SHELL SIZE	TE PART NUMBER

THIS DRAWING IS A CONTROLLED DOCUMENT.		DWN C.C THOMAS 20AUG2011	 TE Connectivity						
DIMENSIONS: mm		CHK R. GROSS 20AUG2011							
	TOLERANCES UNLESS OTHERWISE SPECIFIED:		APVD R. GROSS 20AUG2011	NAME					
	0 PLC ± - 		PRODUCT SPEC	CIRCULAR HD PLUG WITH PIN, CONTACTS					
	1 PLC ± -		108-127005	3 POS.					
	2 PLC ± - 0.2		APPLICATION SPEC	-					
	3 PLC ± -		—	SIZE	CAGE CODE	DRAWING NO	RESTRICTED TO		
	4 PLC ± -		—	A2	00779	C-2157739	—		
MATERIAL		FINISH	WEIGHT						
			—						
			CUSTOMER DRAWING	SCALE	NTS	SHEET	1 of 1	REV	C

Mouser Electronics

Authorized Distributor

Click to View Pricing, Inventory, Delivery & Lifecycle Information:

[TE Connectivity:](#)

[2157739-1](#)