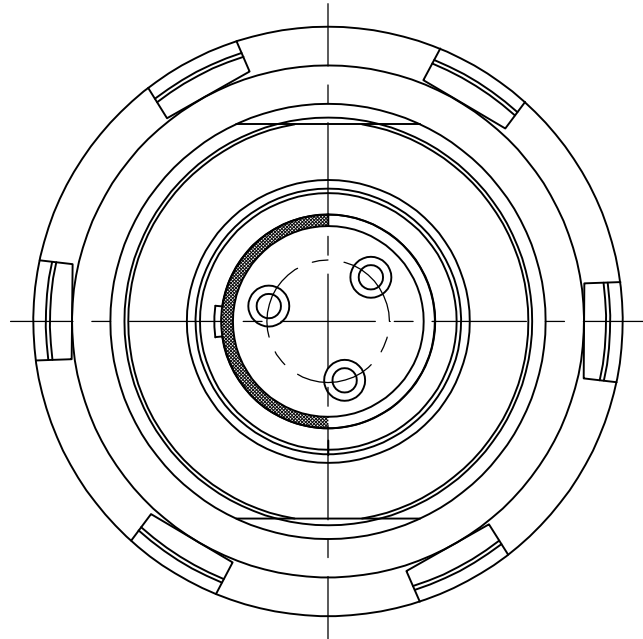
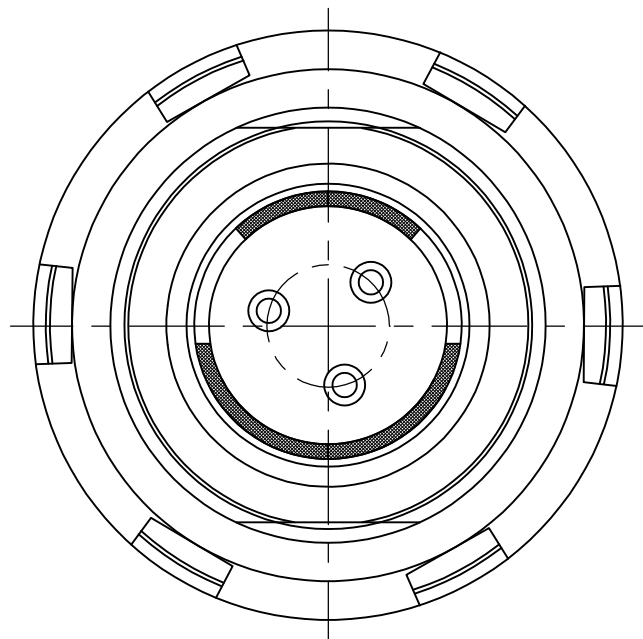


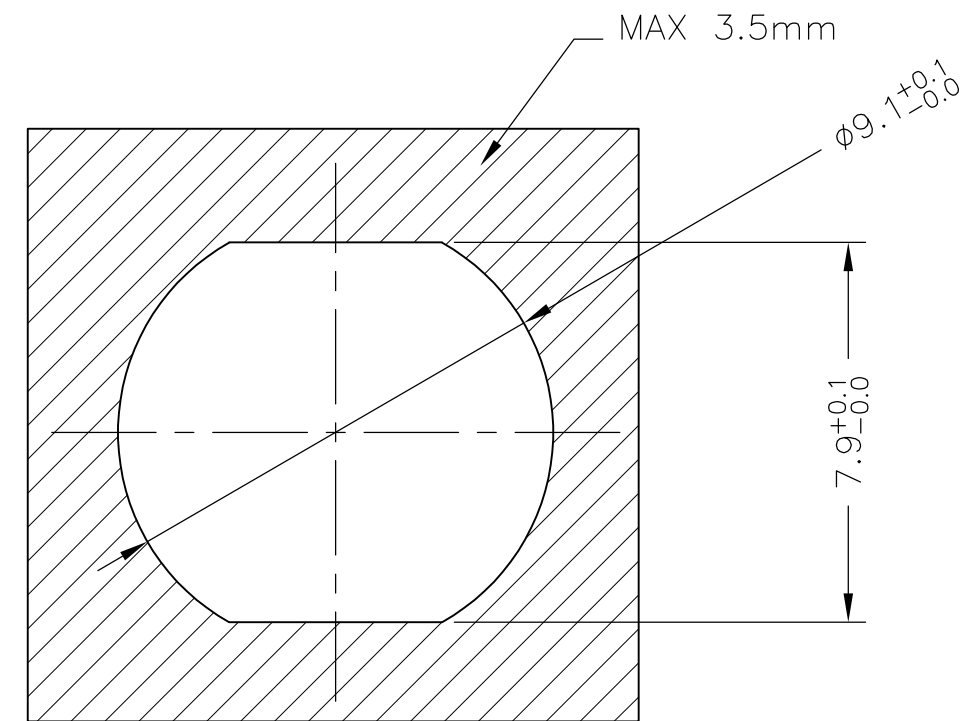
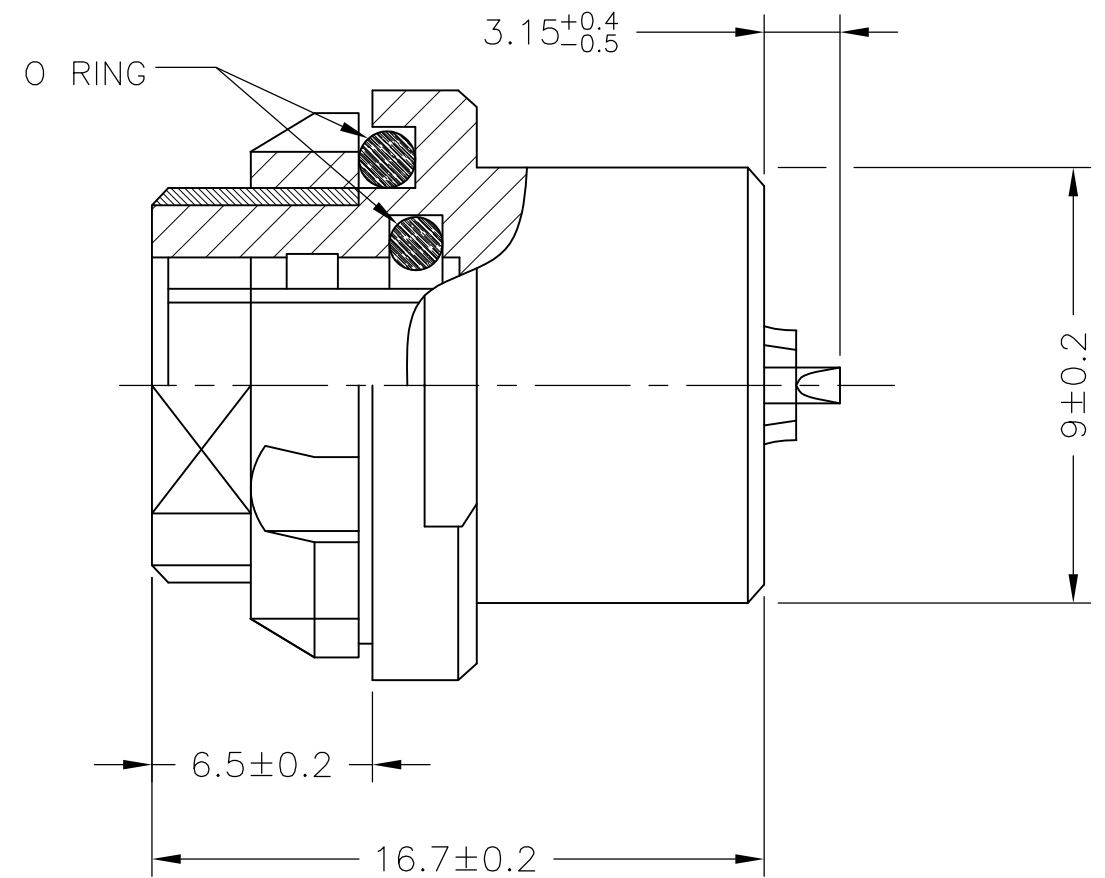
LOC	DIST	REVISIONS					
		P	LTR	DESCRIPTION	DATE	DWN	APVD
—	—		C	REVISED PER ECO 13-001843.	08FEB2013	MGM	CT



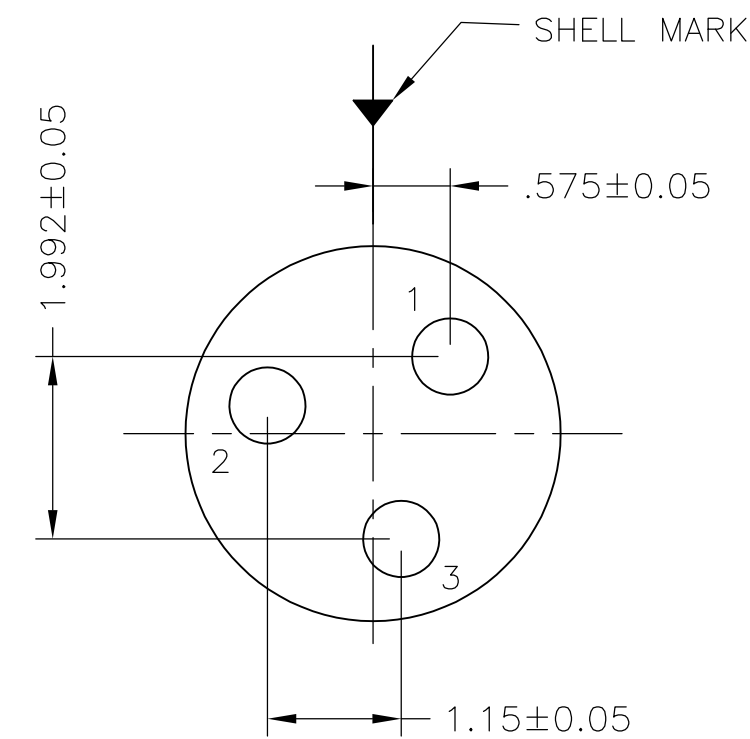
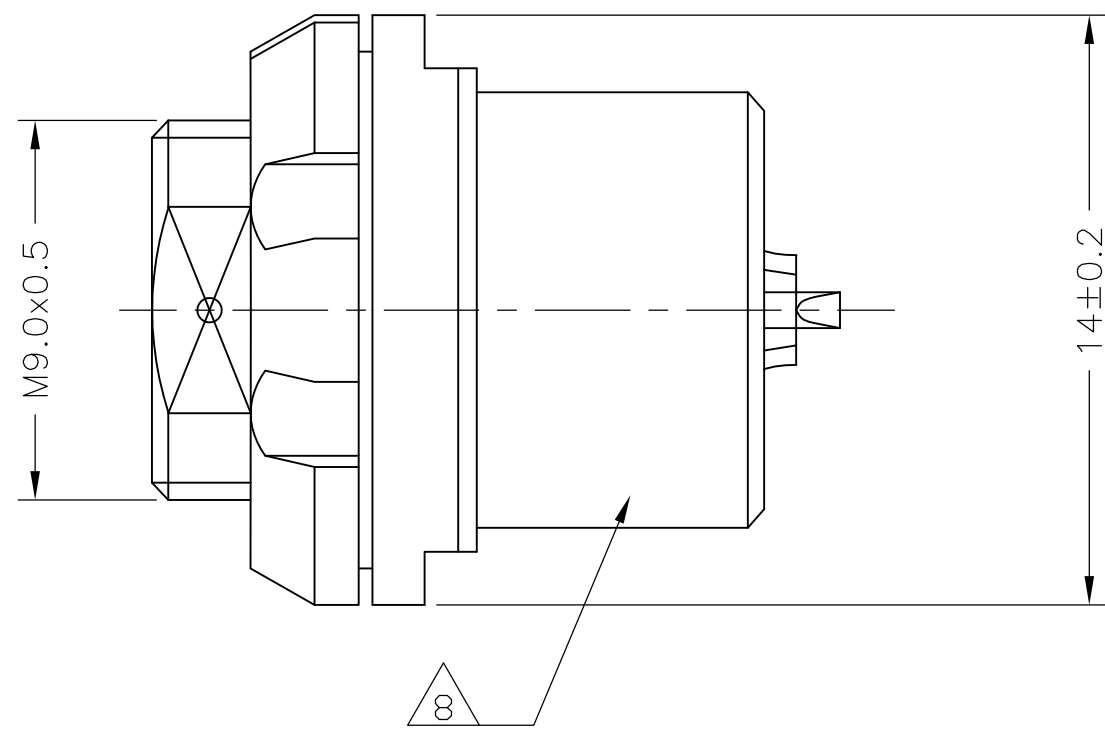
SINGLE POLARIZATION



DOUBLE POLARIZATION



PANEL CUTOUT



CAVITY IDENTIFICATION WHEN VIEWED FROM MATING FACE OF CONNECTOR

1. UNLESS OTHERWISE SPECIFIED DIMENSIONS TOLERANCE ARE ±0.2
2. DWV RATING: 875VAC @ SEA LEVEL
3. WORKING TEMPERATURE: -55°C ~+125°C

4 MATERIAL:

CONTACT : COPPER ALLOY

SHELL : COPPER ALLOY

INSULATOR : PEEK

O RING : SILICONE RUBBER

5 FINISH

CONTACT: GOLD OVER NICKEL




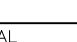
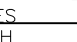
SHELL : BLACK CHROMIUM

6. WATER PROOF: 1M IMMERSION
7. WIRE SIZE: 22 AWG MAX.

8 THE PART IS MARKED WITH THE TE PART NUMBER, CHINA, DATE CODE AND LOT I.D.

9 ALL TOLERANCES TO BE ±0.20 MM UNLESS NOTED.

1	CHROMIUM-BLACK	DOUBLE	SOLDERING	2157738-2
1	CHROMIUM-BLACK	SINGLE	SOLDERING	2157738-1
SHELL SIZE	FINISH	POLARIZATION	TERMINATION	TE CONNECTIVITY PART NUMBER

THIS DRAWING IS A CONTROLLED DOCUMENT.		DWN C.C THOMAS 20AUG2011	 TE Connectivity				
DIMENSIONS: mm		CHK R. GROSS 20AUG2011					
	TOLERANCES UNLESS OTHERWISE SPECIFIED:		APVD R. GROSS 20AUG2011	NAME CIRCULAR HD RECEPTACLE WITH SOLDER CUP SOCKETS CONTACTS - 3 POS -			
	0 PLC ± - 		PRODUCT SPEC 108-127005				
	1 PLC ± - 2 PLC ± 0.20 3 PLC ± - 4 PLC ± - ANGLES ± 3°		APPLICATION SPEC -	SIZE A2	CAGE CODE 00779	DRAWING NO C-2157738	RESTRICTED TO -
	MATERIAL  -	FINISH  -	WEIGHT -				
CUSTOMER DRAWING			SCALE NTS	SHEET 1 of 1	REV C		

Mouser Electronics

Authorized Distributor

Click to View Pricing, Inventory, Delivery & Lifecycle Information:

[TE Connectivity:](#)

[2157738-1](#)