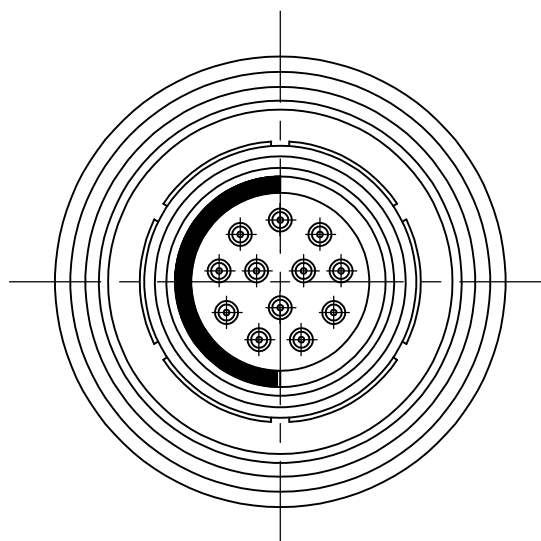
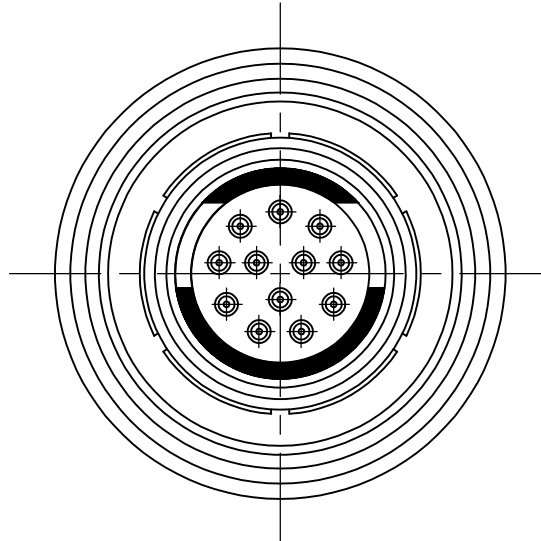


D



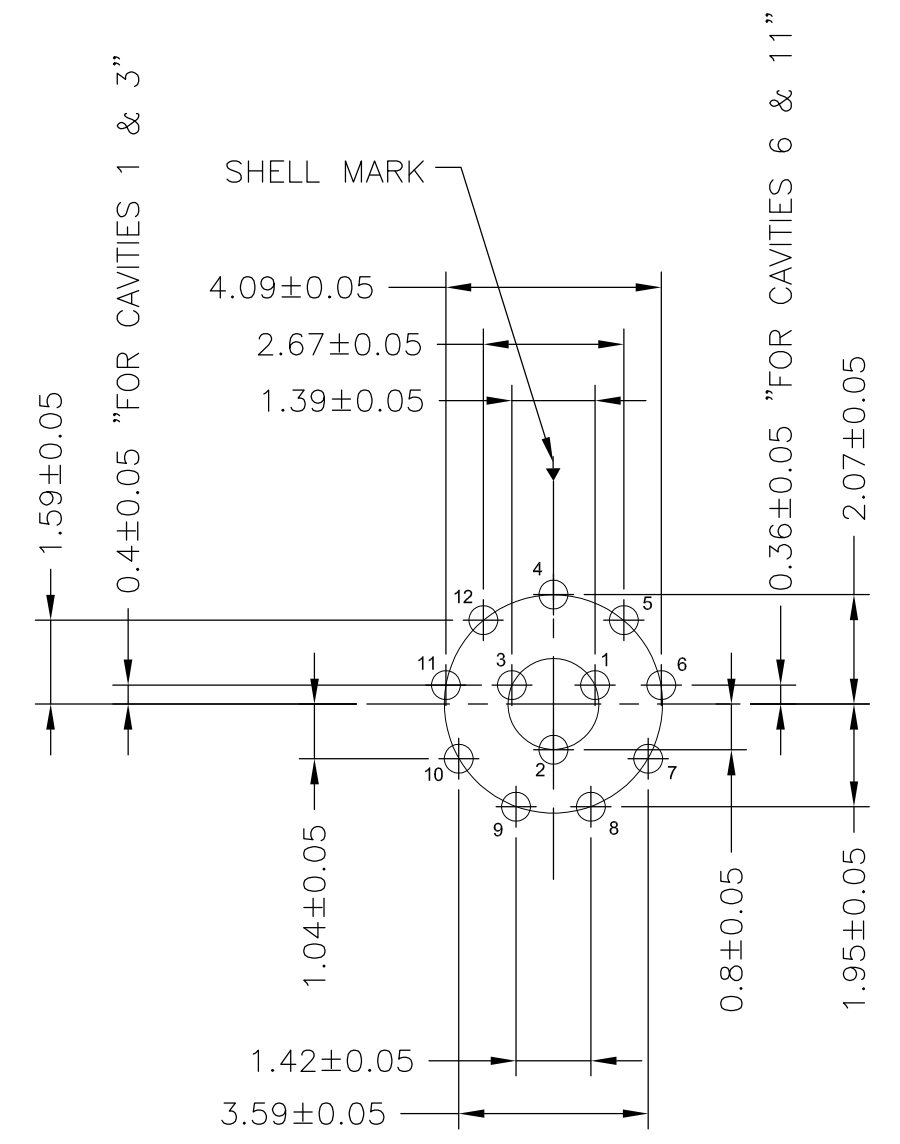
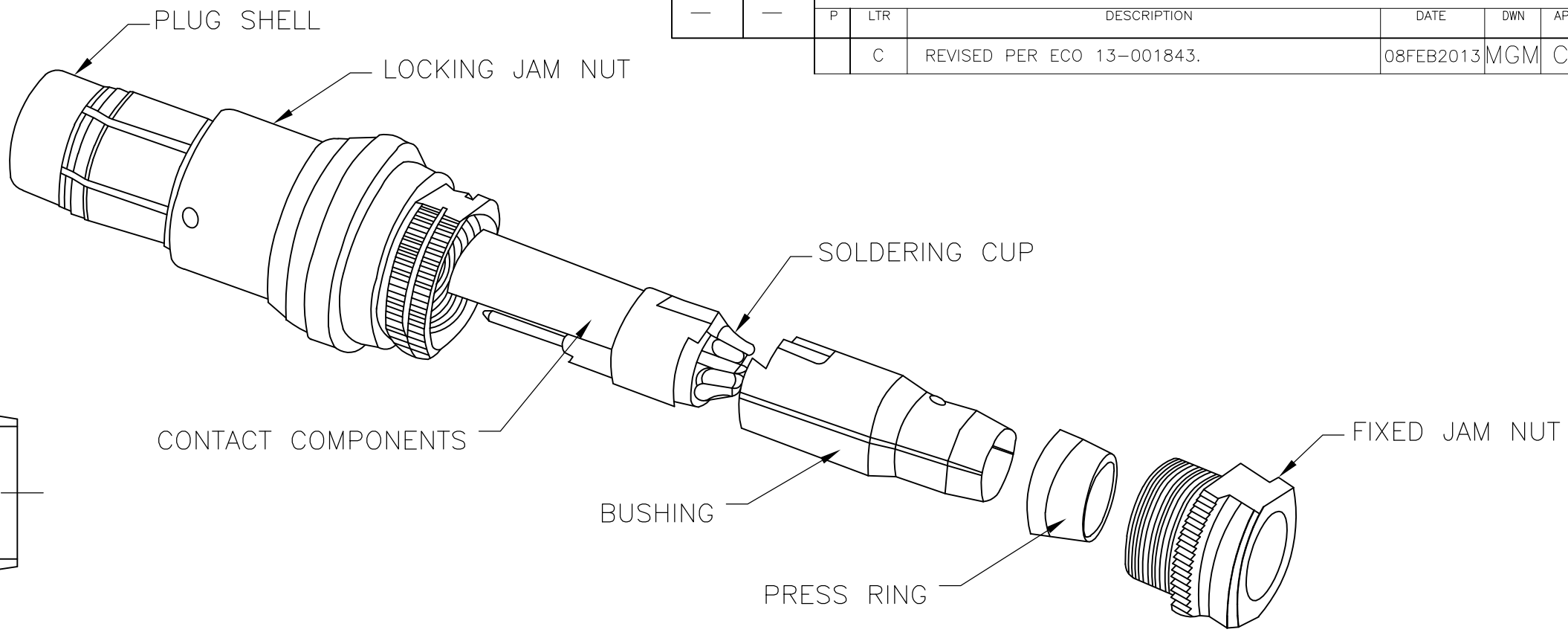
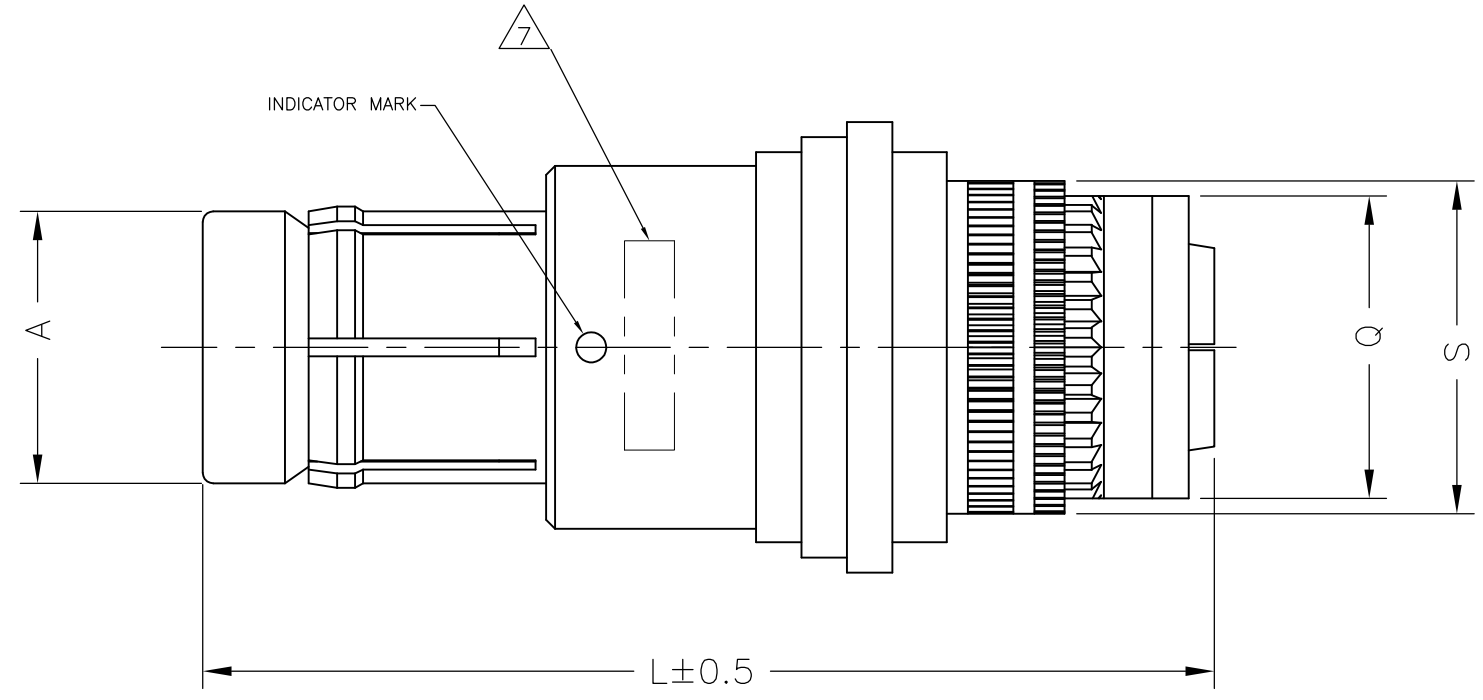
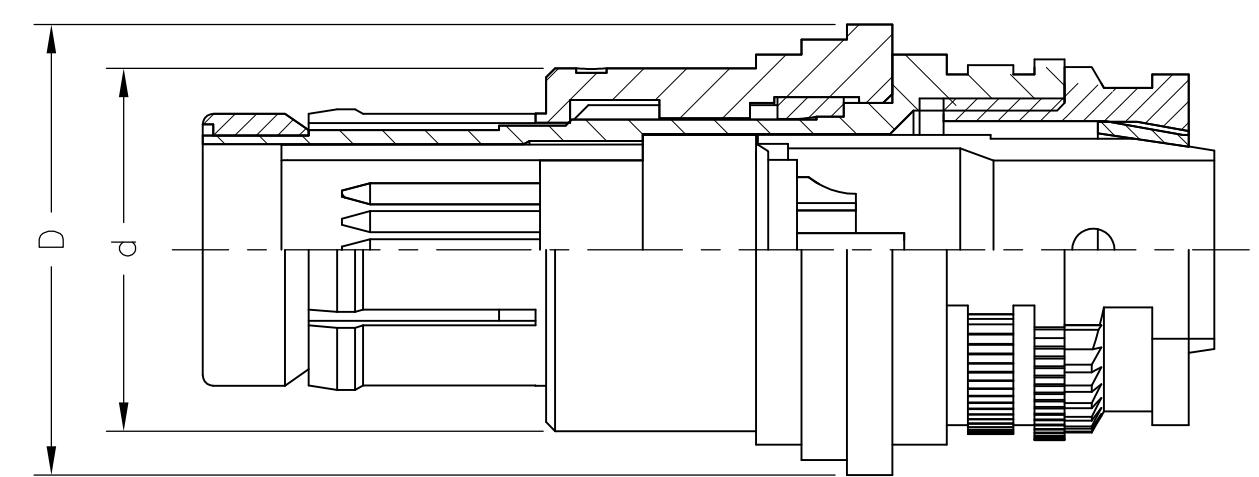
SINGLE POLARIZATION



DOUBLE POLARIZATION

C

B



CAVITY IDENTIFICATION WHEN VIEWED FROM MATING FACE OF CONNECTOR

- 1. UNLESS OTHERWISE SPECIFIED DIMENSIONS TOLERANCE ARE  $\pm 0.15$ .
- 2. DWV RATING: 725VAC @ SEA LEVEL
- 3. WIRE SIZE: 28 AWG MAX
- 4. WORKING TEMPERATURE:  $-55^{\circ}\text{C} \sim +125^{\circ}\text{C}$

- 5 MATERIAL:
  - CONTACT : COPPER ALLOY
  - SHELL : COPPER ALLOY
  - INSULATOR : PEEK
- 6 FINISH
  - CONTACT: GOLD OVER NICKEL
  - SHELL : BLACK CHROMIUM

- 7 THE PART IS MARKED WITH THE TE PART NUMBER, CHINA, DATE CODE AND LOT ID.
- 8 ALL TOLERANCES TO BE  $\pm 0.20$  MM UNLESS NOTED.

CHROMIUM-BLACK	DOUBLE	SOLDERING	ø9	10	11	33.45	ø12	ø14.9	2	2157539-2
CHROMIUM-BLACK	SINGLE	SOLDERING	ø9	10	11	33.45	ø12	ø14.9	2	2157539-1
FINISH	POLARIZATION	TERMINATION	A	Q	S	L	d	D	SHELL SIZE	TE PART NUMBER

THIS DRAWING IS A CONTROLLED DOCUMENT.

DIMENSIONS:  
mm

MATERIAL

TOLERANCES UNLESS OTHERWISE SPECIFIED:

0 PLC	±	-
1 PLC	±	-
2 PLC	±	0.20
3 PLC	±	-
4 PLC	±	-
ANGLES	±	3°
FINISH		

5

6

DWN  
C.C THOMAS  
05MAY2011

CHK  
R. GROSS  
05MAY2011

APVD  
R. GROSS  
05MAY2011

PRODUCT SPEC  
108-127005

APPLICATION SPEC

WEIGHT  
-

CUSTOMER DRAWING

TE Connectivity

NAME  
CIRCULAR HD PLUG WITH PINS,  
12 POS.  
-

SIZE  
A2

CAGE CODE  
00779

DRAWING NO  
C=2157539

RESTRICTED TO  
-

SCALE  
NTS

SHEET  
1 of 1

REV  
C

A

A

# Mouser Electronics

Authorized Distributor

Click to View Pricing, Inventory, Delivery & Lifecycle Information:

[TE Connectivity:](#)

[2157539-1](#)