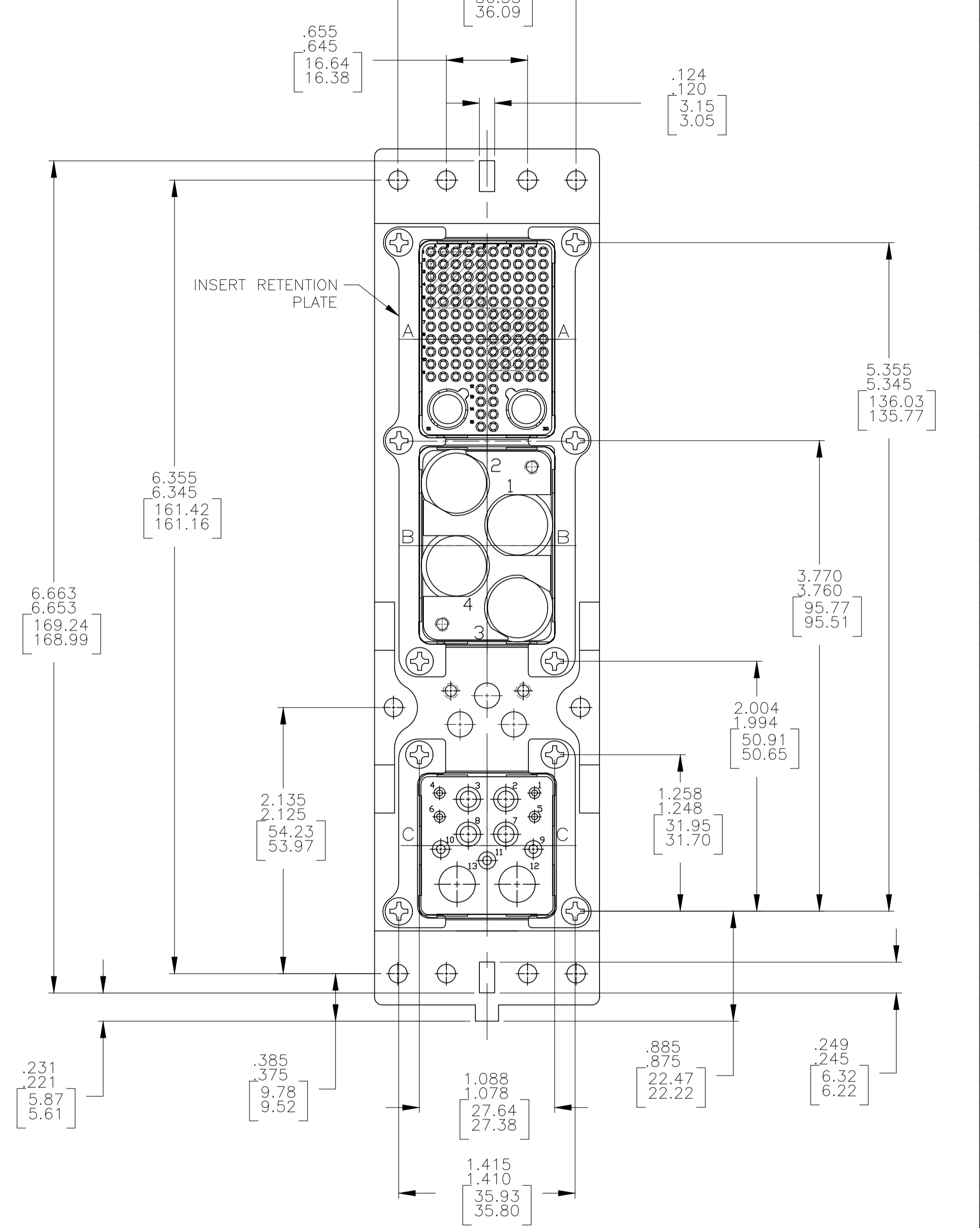
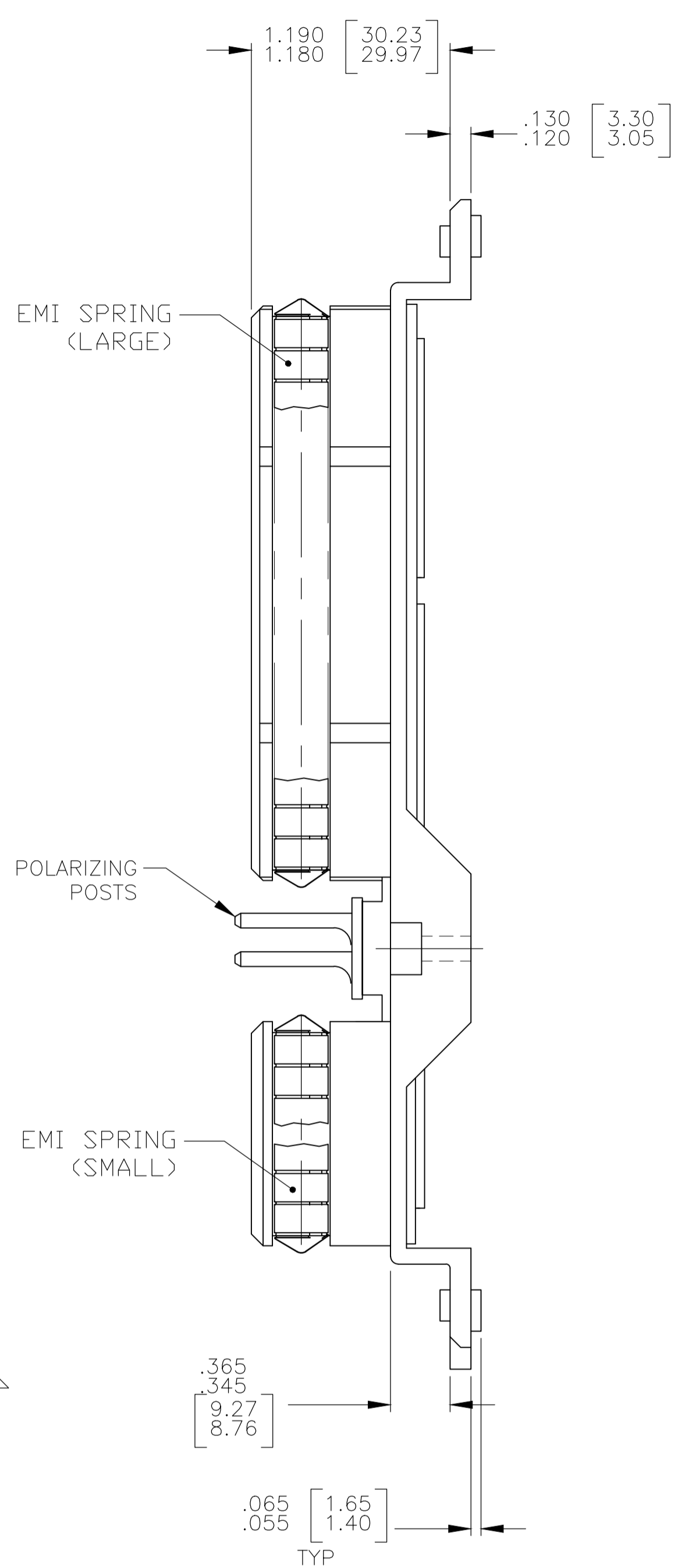
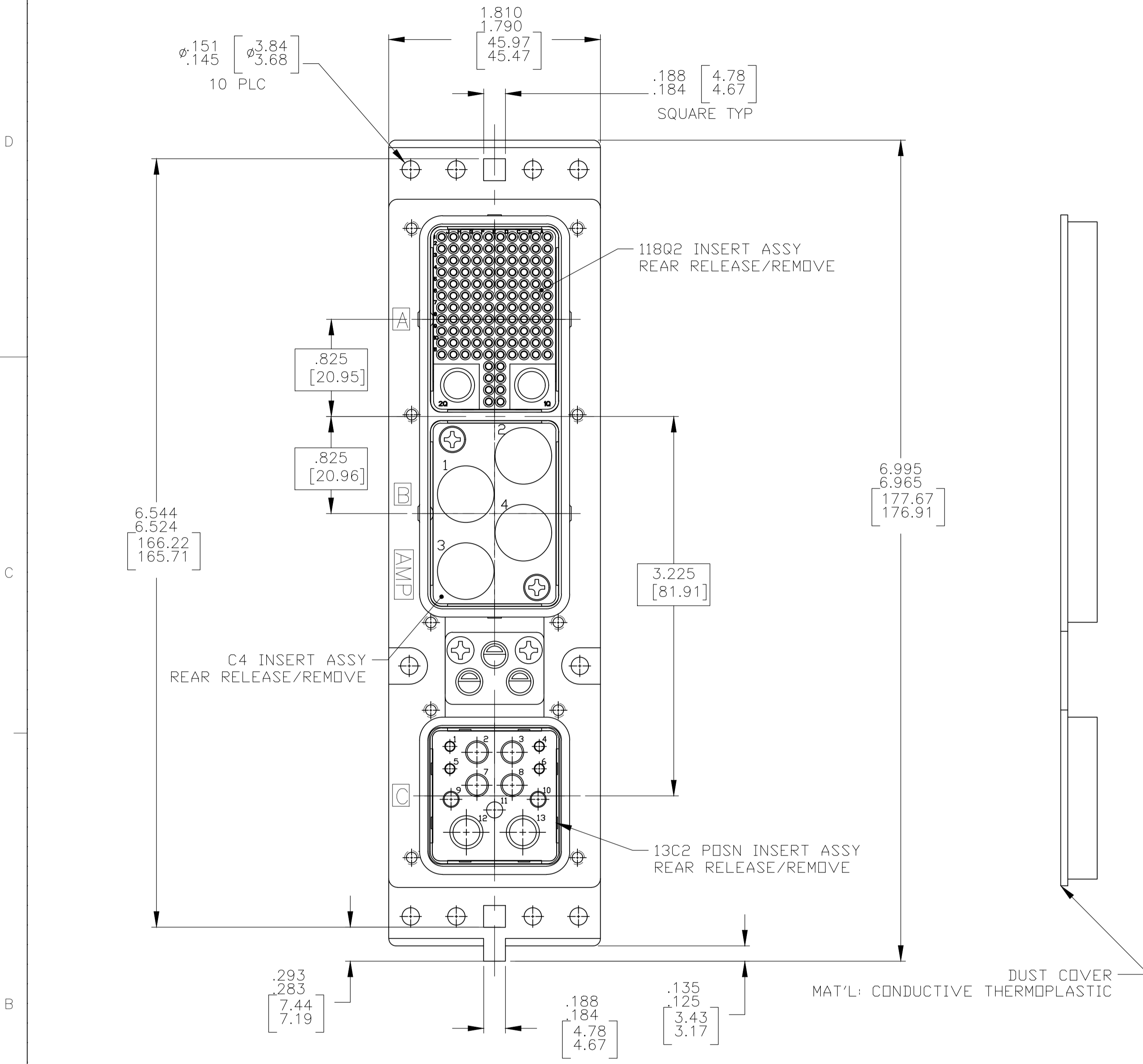


REVISIONS					
P	LYR	DESCRIPTION	DATE	DMN	APVD
C	REVISED PER ECO-17-015513		19DEC2017	PHM	CT



- CONNECTOR DIMENSIONS ARE PER ARINC 600 SPECIFICATION UNLESS OTHERWISE SPECIFIED.
- DUST COVER INSTALLED FOR SHIPPING.
- KEYING SHOWN IN POSITION *01* FOR ILLUSTRATION ONLY. CONNECTORS SHIPPED WITH KEYING INSTALLED IN POSITION PER TABLE.
- CONTACTS AND FILLER PLUGS SHIPPED IN A SEPARATE CONTAINER WITH CONNECTOR.

COMPONENT	MATERIAL	FINISH
SHELL	DIE CAST ALUMINUM PER ASTM-B-85	ELECTROLESS NICKEL PER MIL-C-26074
INSERT RETENTION PLATES	ALUMINUM ALLOY PER ASTM-B-209	ELECTROLESS NICKEL PER MIL-C-26074
SCREWS	STEEL OR STAINLESS STEEL	PASSIVATED
POLARIZING POSTS	ALUMINUM ALLOY PER ASTM-B-209	BLUE ANODIZED PER MIL-A-8625
POLARIZING POST RETAINING PLATE	ALUMINUM ALLOY PER ASTM-B-209	BLUE ANODIZED PER MIL-A-8625
118Q2 & 13C2 INSERT	THERMOSET OR THERMOPLASTIC PPS PER MIL-M-24519	-
C4 INSERT	ALUMINUM ALLOY PER ASTM-B-209	CHEMICAL CONVERSION PER MIL-C-5541, CLASS 1A

01	MODULE A: TE PART NO. 208262-3 (SZ 22 PIN CONTACT QTY = 118) TE PART NO. 1445693-1 (SZ 8 QUADRAX; QTY = 2)	2157220-1
	MODULE B: NONE MODULE C: TE PART NO. 208273-2 (SZ 12 SOCKET CONTACT QTY = 4) TE PART NO. 1663767-7 (SZ 16 FILLER PLUG QTY = 3) TE PART NO. 1663767-6 (SZ 20 FILLER PLUG QTY = 4) TE PART NO. 1484225-1 (SZ 5 FILLER PLUG QTY = 2)	
KEYING POSITION	CONTACTS & FILLER PLUGS INCLUDED NOT INSTALLED	PART NUMBER

THIS DRAWING IS A CONTROLLED DOCUMENT. DIN C.C.THOMAS 12-16-10
 DIMENSIONS: INCHES. TOLERANCES UNLESS OTHERWISE SPECIFIED:
 0. PLC ± .005
 1. PLC ± .005
 2. PLC ± .005
 3. PLC ± .005
 4. PLC ± .005
 ANGLES ± .5°

APVD: K.THACKSTON 12-16-10
 NAME: K.THACKSTON
 PRODUCT SPEC: PLUG ASSY, SIZE 2, REAR RELEASE, ARINC 600 (118Q2/C4/13C2)
 APPLICATION SPEC: PLUG ASSY, SIZE 2, REAR RELEASE, ARINC 600 (118Q2/C4/13C2)
 SIZE: A1
 CASE CODE: 00779
 DRAWING NO: 2157220
 WEIGHT: 0.00779
 CUSTOMER DRAWING: YES
 SCALE: 3:2
 SHEET: 1 OF 1
 REV: C

STE TE Connectivity

Mouser Electronics

Authorized Distributor

Click to View Pricing, Inventory, Delivery & Lifecycle Information:

[TE Connectivity:](#)

[2157220-1](#)