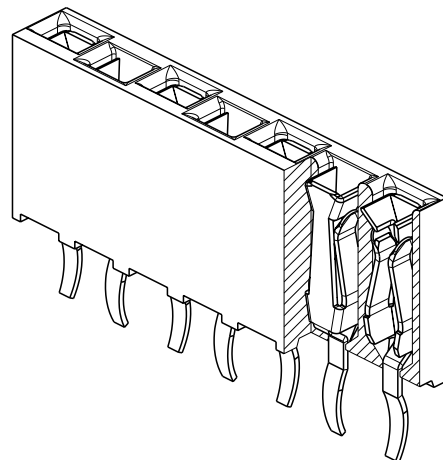
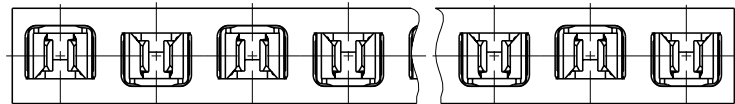
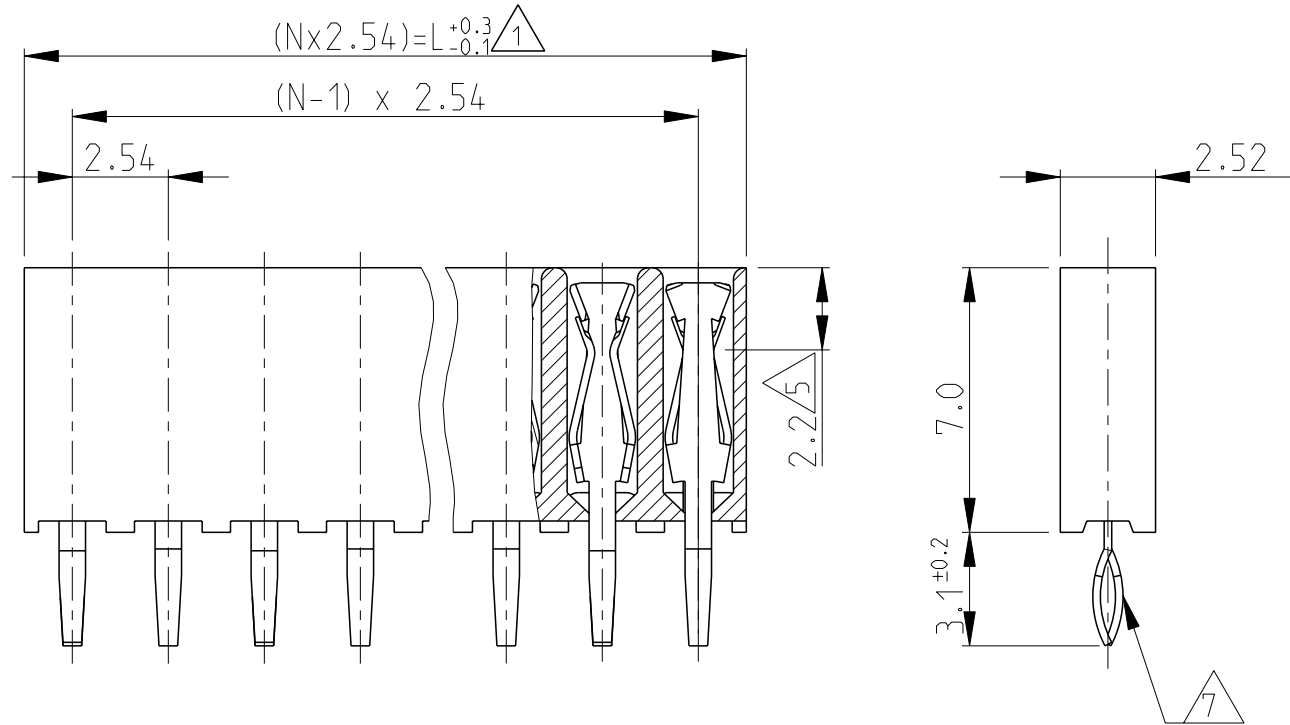


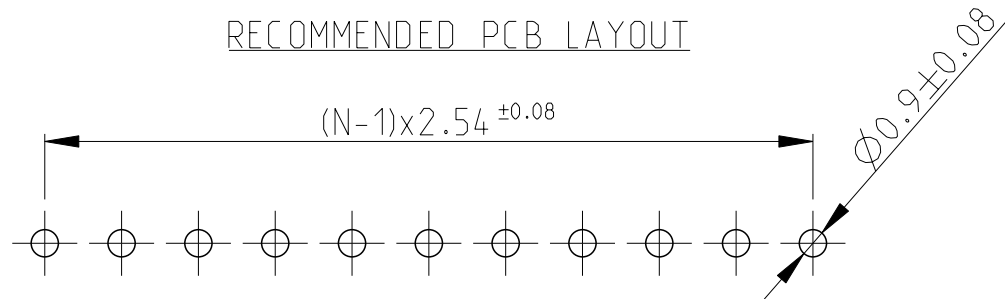
© 2019 TE Connectivity. All Rights Reserved.

POS.	L	PART-NO.		
2	5.08	215298-2		
3	7.62	-3	OBSOLETE	
4	10.16	-4		
5	12.70	-5		
6	15.24	-6		
7	17.78	-7		
8	20.32	-8		
9	22.86	-9	OBSOLETE	
10	25.40	1-	-0	OBSOLETE
11	27.94	1-	-1	
12	30.48	1-	-2	OBSOLETE
13	33.02	1-	-3	
14	35.56	1-	-4	
15	38.10	1-	-5	
16	40.64	1-	-6	
17	43.18	1-	-7	OBSOLETE
18	45.72	1-	-8	OBSOLETE
19	48.26	1-	-9	
20	50.80	2-	-0	
21	53.34	2-	-1	OBSOLETE
22	55.88	2-	-2	
23	58.42	2-	-3	
24	60.96	2-	-4	
25	63.50	2-	-5	OBSOLETE
26	66.04	2-	-6	OBSOLETE
27	68.58	2-	-7	
28	71.12	2-	-8	
29	73.66	2-	-9	
30	76.2	3-	-0	OBSOLETE
31	78.74	3-	-1	
32	81.28	3-	-2	
33	83.82	3-	-3	
34	86.36	3-	-4	
35	88.90	3-	-5	
36	91.44	3-215298-6		



4:1


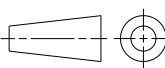


RECOMMENDED PCB LAYOUT



REVISIONS					
P	LTR	DESCRIPTION	DATE	DWN	APVD
	F	PLASTIC MATERIAL SUPPLIER CHANGE	18MAR2019	SS	PS

NOTES:

1. TO DETERMINE DIMENSIONS TAKE N = NO. OF POS.
FOR EXAMPLE: 10 POS.: N x 2,54 = 25,4 mm
FOR ORDER NO. USE BASIC NO. + NO. OF POS.
FOR EXAMPLE: 2 POS.= 215298-2 (SHORTEST VERSION)
36 POS.= 3-215298-6 (LONGEST VERSION)
2. HOUSING MATERIAL: PBT GREEN GLASSFILLED, UL 94V-0.
CONTACT MATERIAL: PHOSPHOR BRONZE.
3. PLATING: 2,5 µm-4,0 µm TIN OVER MIN 0,5 µm NICKEL
4. MATES WITH 0,63 SQUARE/ROUND MODU POSTS.
5. CONTACT-POINT.
6. RECOMMENDED P.C.BOARD-THICKNESS: 1,6mm.
7. PC-BOARD RETENTION FEATURE.
8. HV100 CONNECTOR PACKED IN ANTISTATIC BLISTER TRAY
9. RETENTION FORCE MUST BE MINIMUM 5N PER CONTACT

THIS DRAWING IS A CONTROLLED DOCUMENT.		DWN A.HQ 24FEB1989		<div>TE Connectivity</div>		
		CHK M.SCHAARSCHMIDT 24FEB1989				
DIMENSIONS: mm		TOLERANCES UNLESS OTHERWISE SPECIFIED: ±0.15		NAME HV 100 CONNECTOR ; VERTICAL ; 7.0mm TOP ENTRY; SINGLE ROW ; TIN		
		APVD G.FELDMER -				
		PRODUCT SPEC 108-19056		SIZE A 3		
		APPLICATION SPEC -				
MATERIAL 		FINISH 		CAGE CODE 00779		DRAWING NO C-215298
				RESTRICTED TO		
CUSTOMER DRAWING				SCALE 5:1		SHEET 1 OF 1
				REV F		

Mouser Electronics

Authorized Distributor

Click to View Pricing, Inventory, Delivery & Lifecycle Information:

[TE Connectivity:](#)

[215298-8](#)