

D

C

B

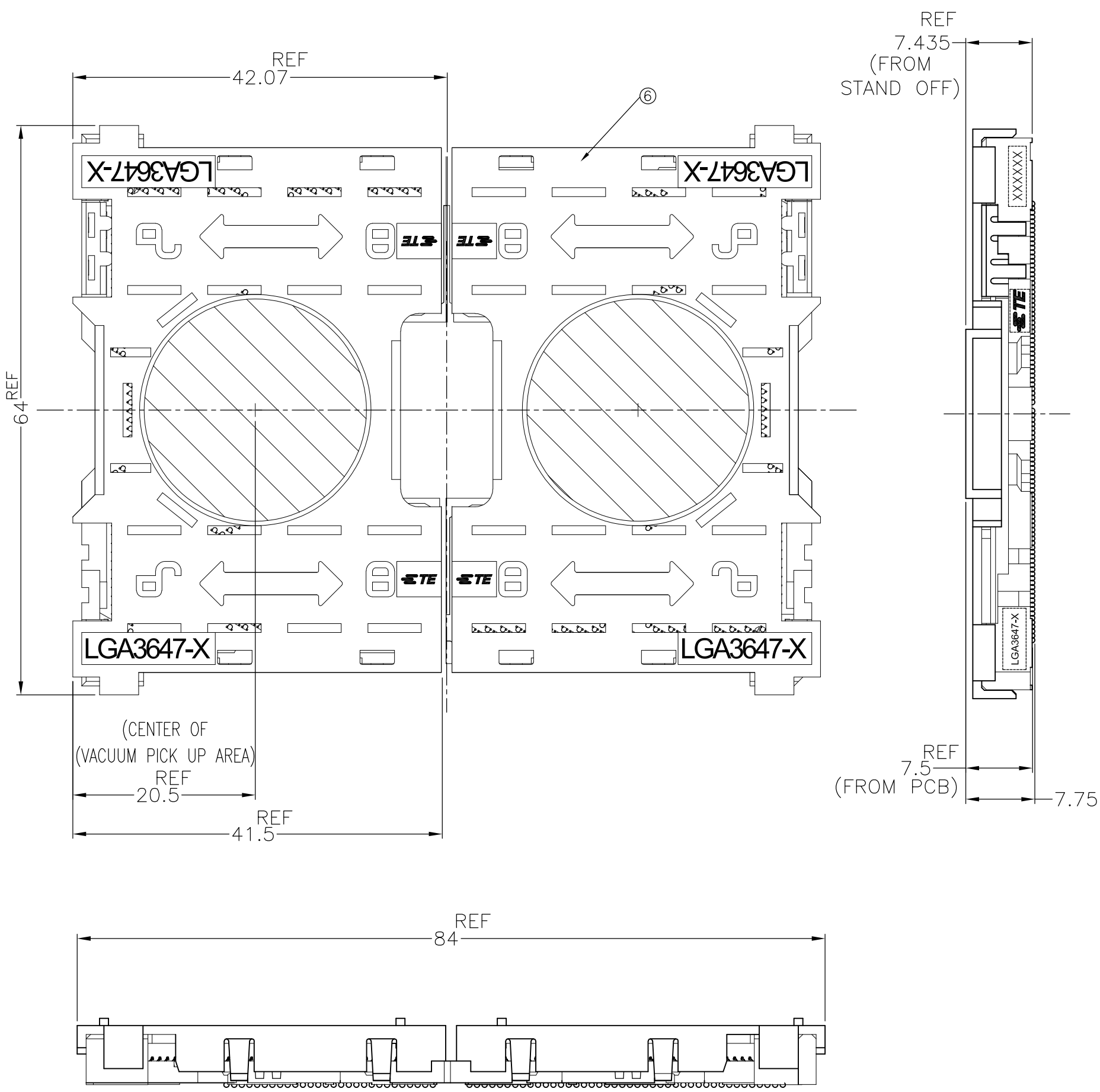
A

D

C

B

A



AFTER SMT CONDITION (WITH CAP)
DEMONSTRATION BY SOCKET P1,LGA3647-1

1. MATERIAL

- ① HOUSING : HIGH TEMP, THERMO-PLASTIC, UL94V-0, BLACK
 - ② CONTACT : COPPER ALLOY
FINISH : Au PL. SHOW AS AT CONTACT AREA
ON OVERALL OVER Ni UNDER PL. 0.00127 MIN.
 - ③ SOLDER BALL : Sn/Ag/Cu
 - ④ KEY HSG LEFT : HIGH TEMP. THERMO-PLASTIC, UL94V-0, BLACK
 - ⑤ KEY HSG RIGHT: HIGH TEMP. THERMO-PLASTIC, UL94V-0, P0 YELLOW, P1 NATURAL
 - ⑥ CAP : HIGH TEMP. THERMO-PLASTIC, UL94V-0, NATURAL
- INDICATED DATE CODE , TYCO LOGO, PRODUCT NAME ON THE HSG
- FOR NORMAL ORDER, LEFT AND RIGHT SEGMENT SHOULD ORDER AT SAME TIME

LGA3647-1 SOCKET P1				LGA3647-0 SOCKET P0				PRODUCT NAME	ASSY PART NUMBER
30u Au PLATING	15u Au PLATING	30u Au PLATING	15u Au PLATING	30u Au PLATING	15u Au PLATING	30u Au PLATING	15u Au PLATING		
LGA3647-1 RIGHT SEGMENT	LGA3647-1 LEFT SEGMENT	LGA3647-1 RIGHT SEGMENT	LGA3647-1 LEFT SEGMENT	LGA3647-0 RIGHT SEGMENT	LGA3647-0 LEFT SEGMENT	LGA3647-0 RIGHT SEGMENT	LGA3647-0 LEFT SEGMENT		
2822980-4	1-2822980-4	2822980-2	1-2822980-2	2822980-3	1-2822980-3	2822980-1	1-2822980-1		

14.5	21	17	1	1						2-2129710-8	
								1		2-2129710-7	
		16						1		2-2129710-6	
	21	17			1					2-2129710-5	
										2-2129710-4	
		17			1					2-2129710-3	
									1	2-2129710-2	
		16								2-2129710-1	
PRODUCT WEIGHT (g/SOCKET)		DIMENSION D2	DIMENSION D1				QTY.		PACKAGE PART NO.		
THIS DRAWING IS A CONTROLLED DOCUMENT.				DWN T.KUO 04MAR2015		<div>TE</div> <div>TE Connectivity</div>					
DIMENSIONS: mm		TOLERANCES UNLESS OTHERWISE SPECIFIED:		CHK M.CHAO 04MAR2015							
		0. PLC ± 0.3 1. PLC ± 0.3 2. PLC ± 0.3 3. PLC ± 0.3 4. PLC ± 0.3 ANGLES ± -		APVD M.CHAO 04MAR2015		NAME SOCKET ASSY LGA3647-X					
				PRODUCT SPEC 108-115115							
				APPLICATION SPEC 114-115011		SIZE A2		CAGE CODE 00779		DRAWING NO C-2129710	
MATERIAL -		FINISH -		WEIGHT -		CUSTOMER DRAWING					
				SCALE NTS		SHEET 1 of 7		REV C			

2129710

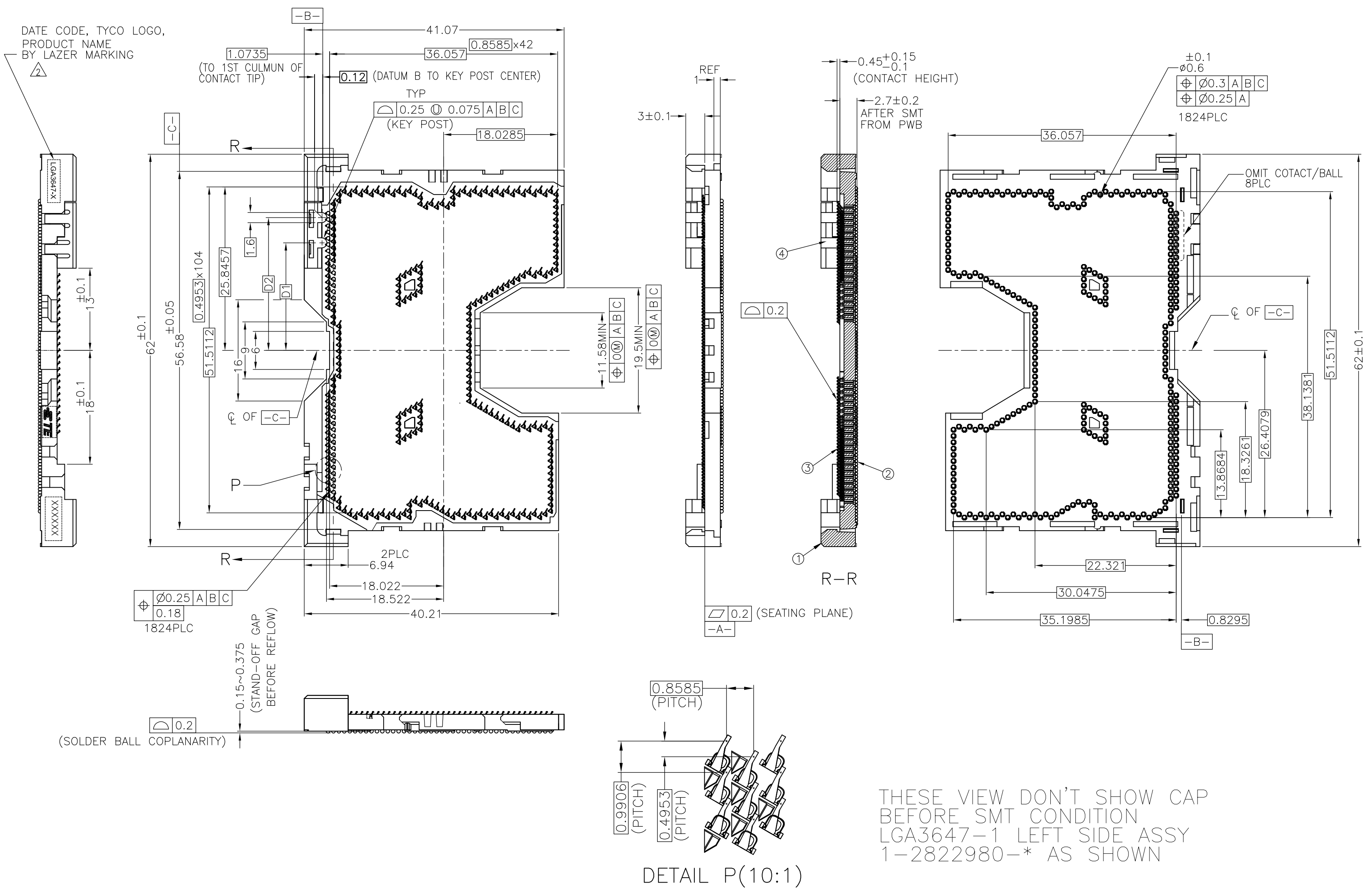
LOC	DIST	REVISIONS				
		P	LTR	DESCRIPTION	DATE	DWN
ES	-	-	-	SEE SHEET 1	-	-

D

C

B

A



D

C

B

A

THIS DRAWING IS A CONTROLLED DOCUMENT.

DIMENSIONS:
mm

MATERIAL
-

TOLERANCES UNLESS OTHERWISE SPECIFIED:

0-PLC	±	0.3
1-PLC	±	0.3
2-PLC	±	0.3
3-PLC	±	0.3
4-PLC	±	0.3
ANGLES	±	-
FINISH	-	-

DWN
-
CHK
-
APVD
-

PRODUCT SPEC
-
APPLICATION SPEC
-
WEIGHT
-

CUSTOMER DRAWING

TE Connectivity

NAME
SOCKET ASSY
LGA3647-X

SIZE
A2

CAGE CODE
00779

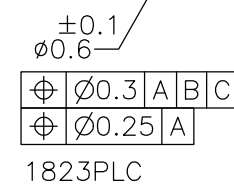
DRAWING NO
C=2129710

RESTRICTED TO
-

SCALE
NTS

SHEET
2 OF 7

REV
C



DETAIL S(10:1)

THIS DRAWING IS A CONTROLLED DOCUMENT.		<div> <div>DWN</div> <div>CHK</div> <div>APVD</div> </div>		<div> <div>TE</div> <div>TE Connectivity</div> </div>	
<div> <div>DIMENSIONS:</div> <div>mm</div> </div>		<div> <div>TOLERANCES UNLESS OTHERWISE SPECIFIED:</div> <div> <div>0. PLC</div> <div>1. PLC</div> <div>2. PLC</div> <div>3. PLC</div> <div>4. PLC</div> <div>ANGLES</div> </div> <div> <div>±</div> <div>±</div> <div>±</div> <div>±</div> <div>±</div> <div>±</div> </div> <div> <div>±0.3</div> <div>±3</div> </div> </div>		<div>NAME</div> <div>SOCKET ASSY</div> <div>LGA3647-X</div>	
<div> <div>MATERIAL</div> <div>-</div> </div>		<div> <div>PRODUCT SPEC</div> <div>-</div> </div>		<div> <div>APPLICATION SPEC</div> <div>-</div> </div>	
<div>FINISH</div> <div>-</div>		<div>WEIGHT</div> <div>-</div>		<div> <div>SIZE</div> <div>A2</div> </div>	
		<div> <div>CAGE CODE</div> <div>00779</div> </div>		<div> <div>DRAWING NO</div> <div>C-2129710</div> </div>	
		<div>CUSTOMER DRAWING</div>		<div> <div>RESTRICTED TO</div> <div>-</div> </div>	
		<div>SCALE</div> <div>NTS</div>		<div> <div>SHEET</div> <div>3 OF 7</div> </div>	
		<div>REV</div> <div>C</div>			

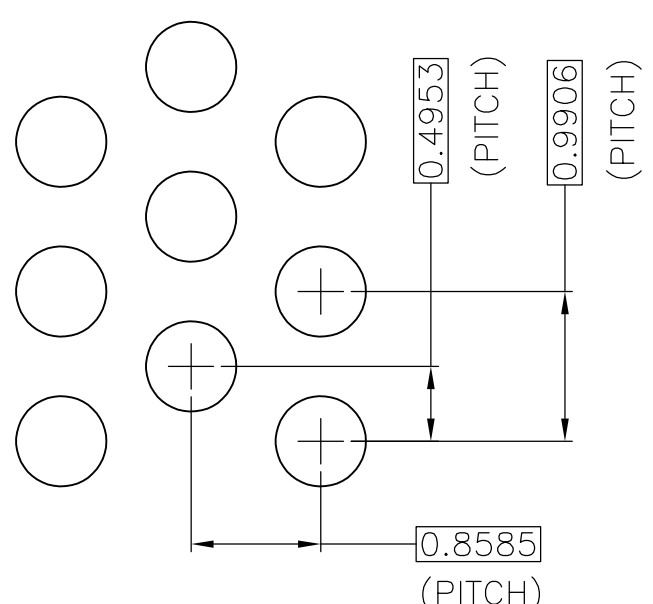
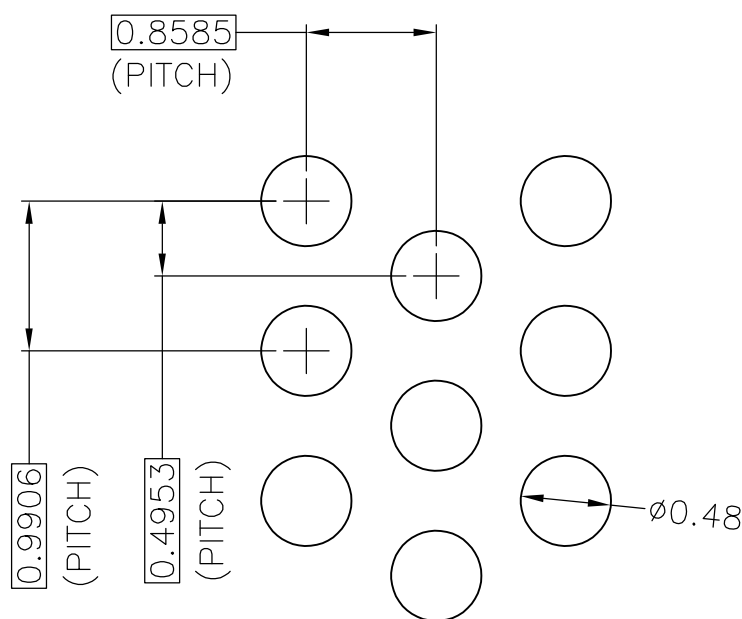
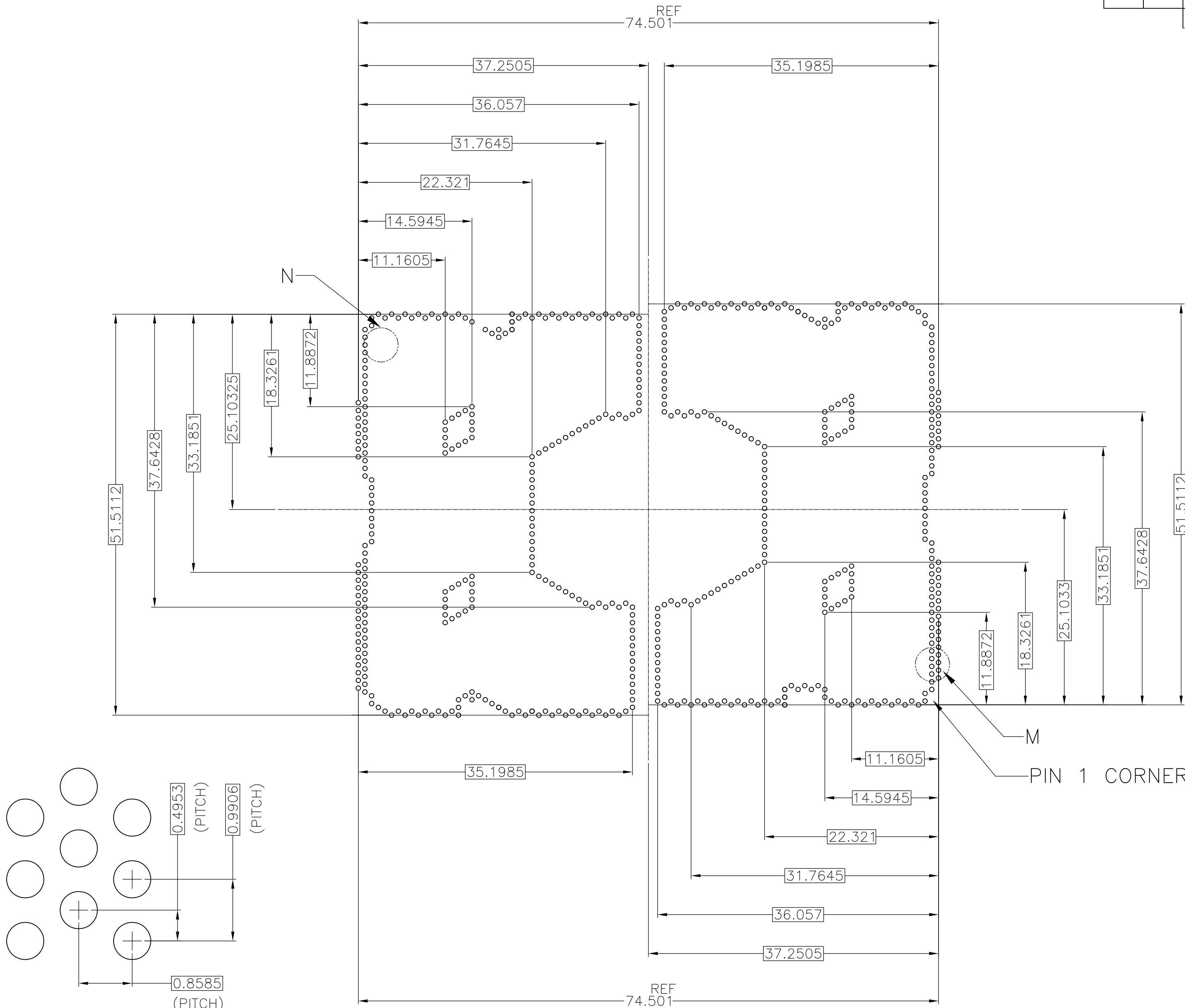
LOC	DIST	REVISIONS					
		P	LTR	DESCRIPTION	DATE	DWN	APVD
ES	—						
			—	SEE SHEET 1	—	—	—

D

C

B

A



D

C

B

A

THIS DRAWING IS A CONTROLLED DOCUMENT.

DIMENSIONS:
mm

MATERIAL
-

TOLERANCES UNLESS OTHERWISE SPECIFIED:

0-PLC ±

1-PLC ±

2-PLC ±

3-PLC ±

4-PLC ±

ANGLES ±

FINISH -

DWN
-

CHK
-

APVD
-

PRODUCT SPEC
-

APPLICATION SPEC
-

WEIGHT
-

CUSTOMER DRAWING

TE Connectivity

NAME
SOCKET ASSY
LGA3647-X

SIZE
A2

CAGE CODE
00779

DRAWING NO
C=2129710

RESTRICTED TO
-

SCALE
NTS

SHEET
5 of 7

REV
C

1471-9 (3/11)

LOC	DIST	REVISIONS					
		P	LTR	DESCRIPTION	DATE	DWN	APVD
ES	—						
			—	SEE SHEET 1	—	—	—

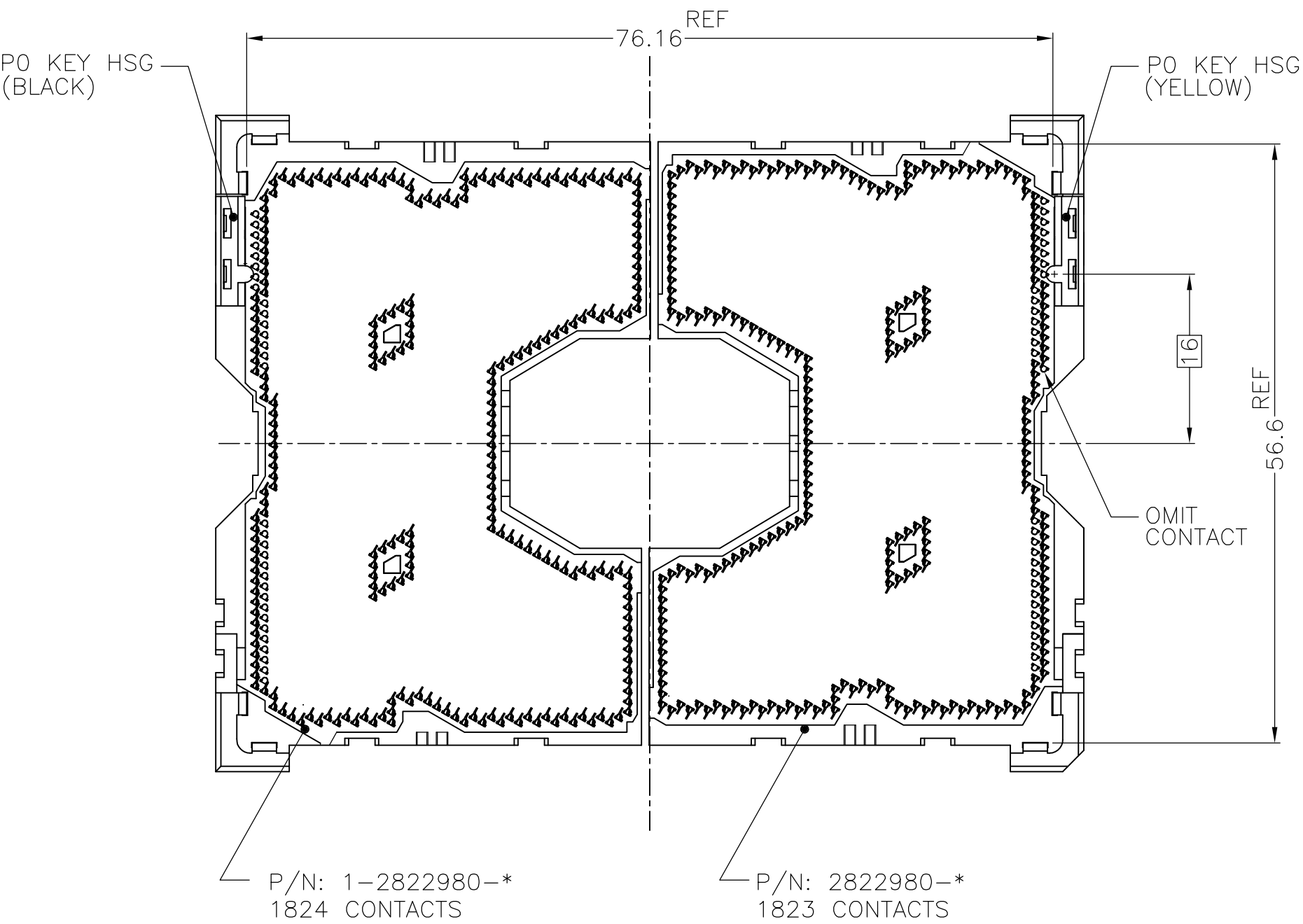
D

C

B

A

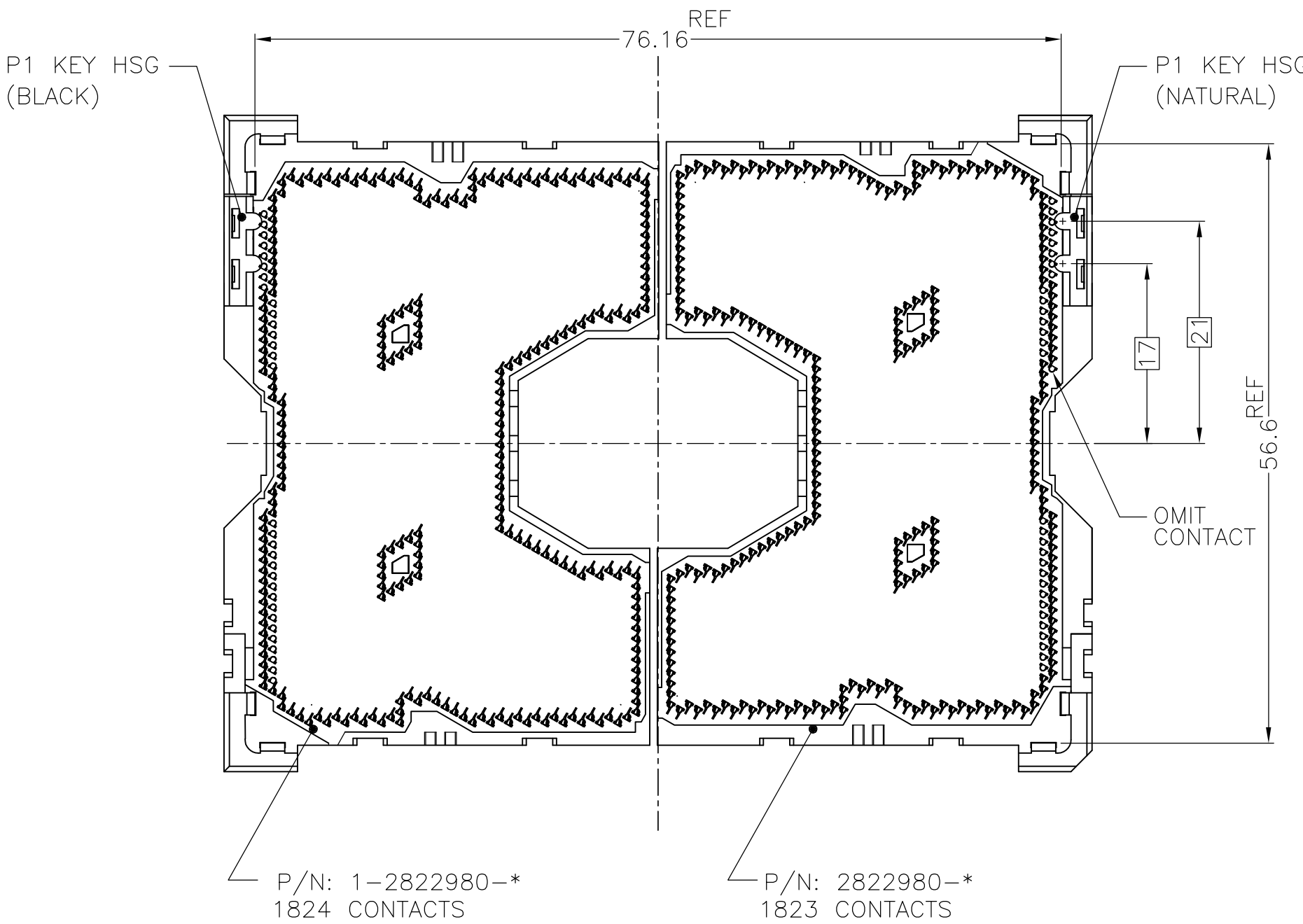
SOCKET P0,LGA3647-0 AS SHOWN



LGA3647-0 AS SHOWN
(KIT P/N: 2-2822979-*)

LGA3647-X POST SMT CONDITION
(PCB IS NOT SHOWN)

SOCKET P1,LGA3647-1 AS SHOWN



LGA3647-1 AS SHOWN
(KIT P/N: 2-2822979-*)

D

C

B

A

THIS DRAWING IS A CONTROLLED DOCUMENT.

DIMENSIONS:
mm

MATERIAL
-

TOLERANCES, UNLESS OTHERWISE SPECIFIED:

0. PLC	±	0.3
1. PLC	±	0.3
2. PLC	±	0.3
3. PLC	±	0.3
4. PLC	±	0.3
ANGLES	±	-
FINISH	-	-

DWN
-

CHK
-

APVD
-

PRODUCT SPEC
-

APPLICATION SPEC
-

WEIGHT
-

CUSTOMER DRAWING

TE Connectivity

NAME
SOCKET ASSY
LGA3647-X

SIZE A2	CAGE CODE 00779	DRAWING NO C=2129710	RESTRICTED TO -
SCALE NTS			SHEET 6 of 7
REV C			

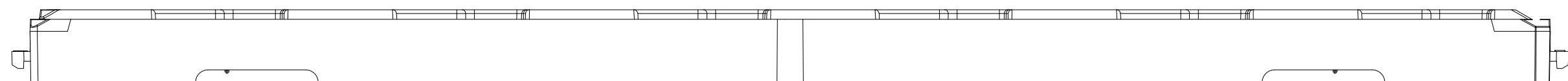
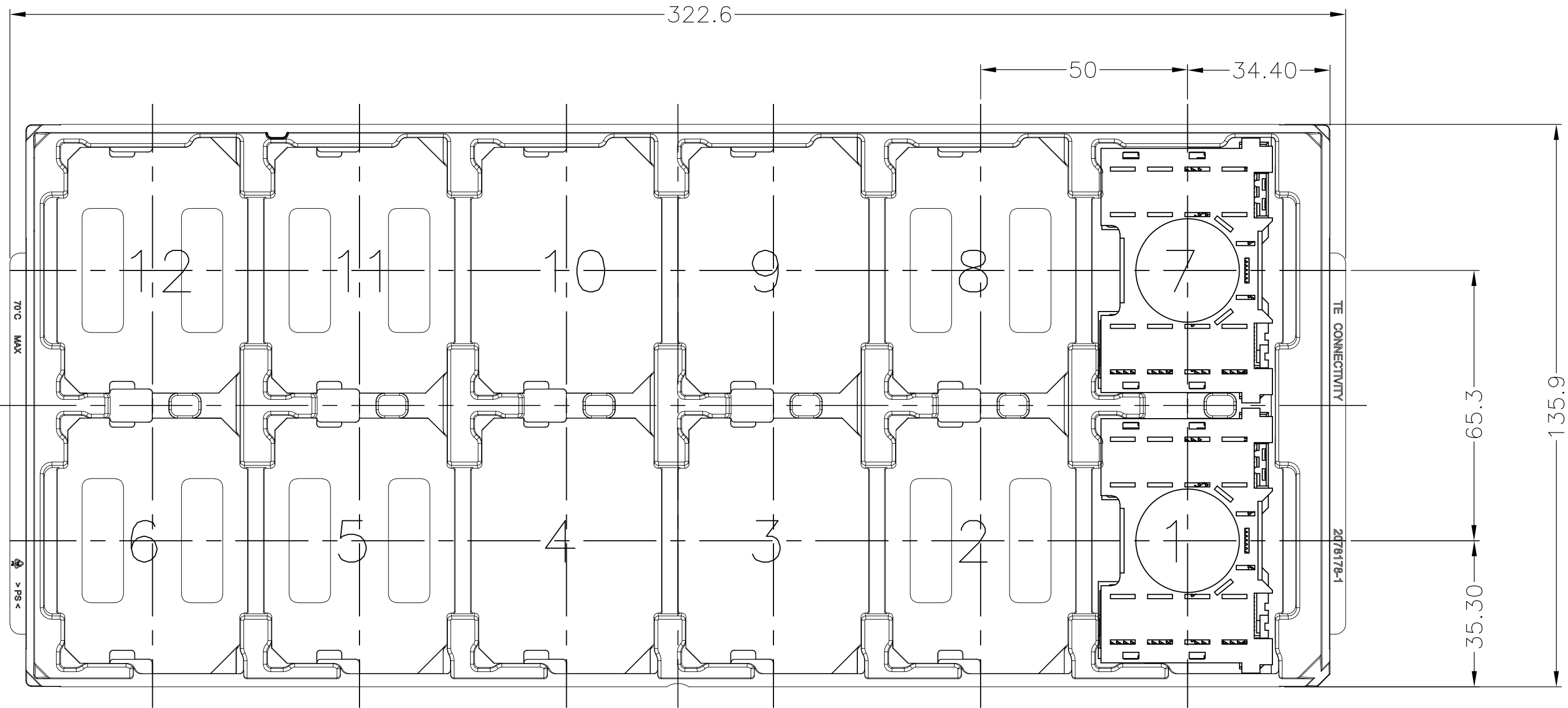
LOC	DIST	REVISIONS					
		P	LTR	DESCRIPTION	DATE	DWN	APVD
ES	—						
			—	SEE SHEET 1	—	—	—

D

C

B

A



FOR LEFT SEGMENT,USE BLACK TRAY TO PACKAGE.
FOR RIGHT SEGMENT,USE BLUE TRAY TO PACKAGE.

168	84	12	2822980-4	2-2129710-8	LGA3647-1 RIGHT SEGMENT	LGA3647-1 SOCKET P1
168	84	12	1-2822980-4	2-2129710-7	LGA3647-1 LFFT SEGMENT	LGA3647-0 SOCKET P0
168	84	12	2822980-3	2-2129710-6	LGA3647-0 RIGHT SEGMENT	LGA3647-1 SOCKET P1
168	84	12	1-2822980-3	2-2129710-5	LGA3647-0 LFFT SEGMENT	LGA3647-0 SOCKET P0
168	84	12	2822980-2	2-2129710-4	LGA3647-1 RIGHT SEGMENT	LGA3647-1 SOCKET P1
168	84	12	1-2822980-2	2-2129710-3	LGA3647-1 LFFT SEGMENT	LGA3647-0 SOCKET P0
168	84	12	2822980-1	2-2129710-2	LGA3647-0 RIGHT SEGMENT	LGA3647-1 SOCKET P1
168	84	12	1-2822980-1	2-2129710-1	LGA3647-0 LFFT SEGMENT	LGA3647-0 SOCKET P0

SOCKET QTY PER OUTER BOX	SOCKET QTY PER INNER BOX	SOCKET QTY PER TRAY	ASSY PART NUMBER	ORDER PART NUMBER	PRODUCT NAME

THIS DRAWING IS A CONTROLLED DOCUMENT.

DIMENSIONS: mm

TOLERANCES UNLESS OTHERWISE SPECIFIED:
0-PLC ±
1-PLC ±
2-PLC ±
3-PLC ±
4-PLC ±
ANGLES ±
FINISH

DWN
CHK
APVD

PRODUCT SPEC
APPLICATION SPEC
WEIGHT

CUSTOMER DRAWING

TE Connectivity

NAME

SIZE CAGE CODE DRAWING NO

RESTRICTED TO

A200779

SCALE NTS

SHEET 7 of 7

REV C

Mouser Electronics

Authorized Distributor

Click to View Pricing, Inventory, Delivery & Lifecycle Information:

[TE Connectivity:](#)

[2-2129710-7](#)