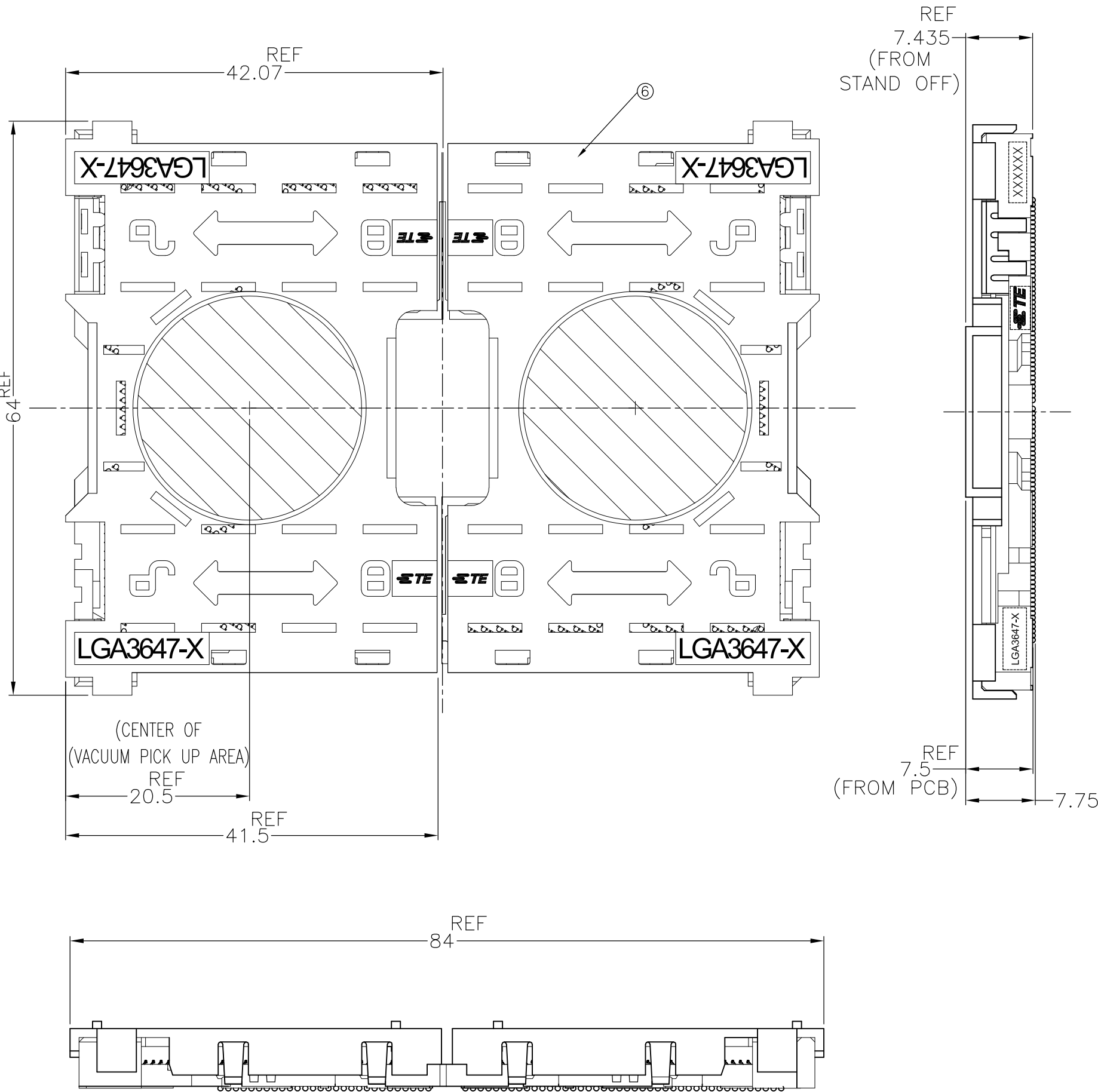


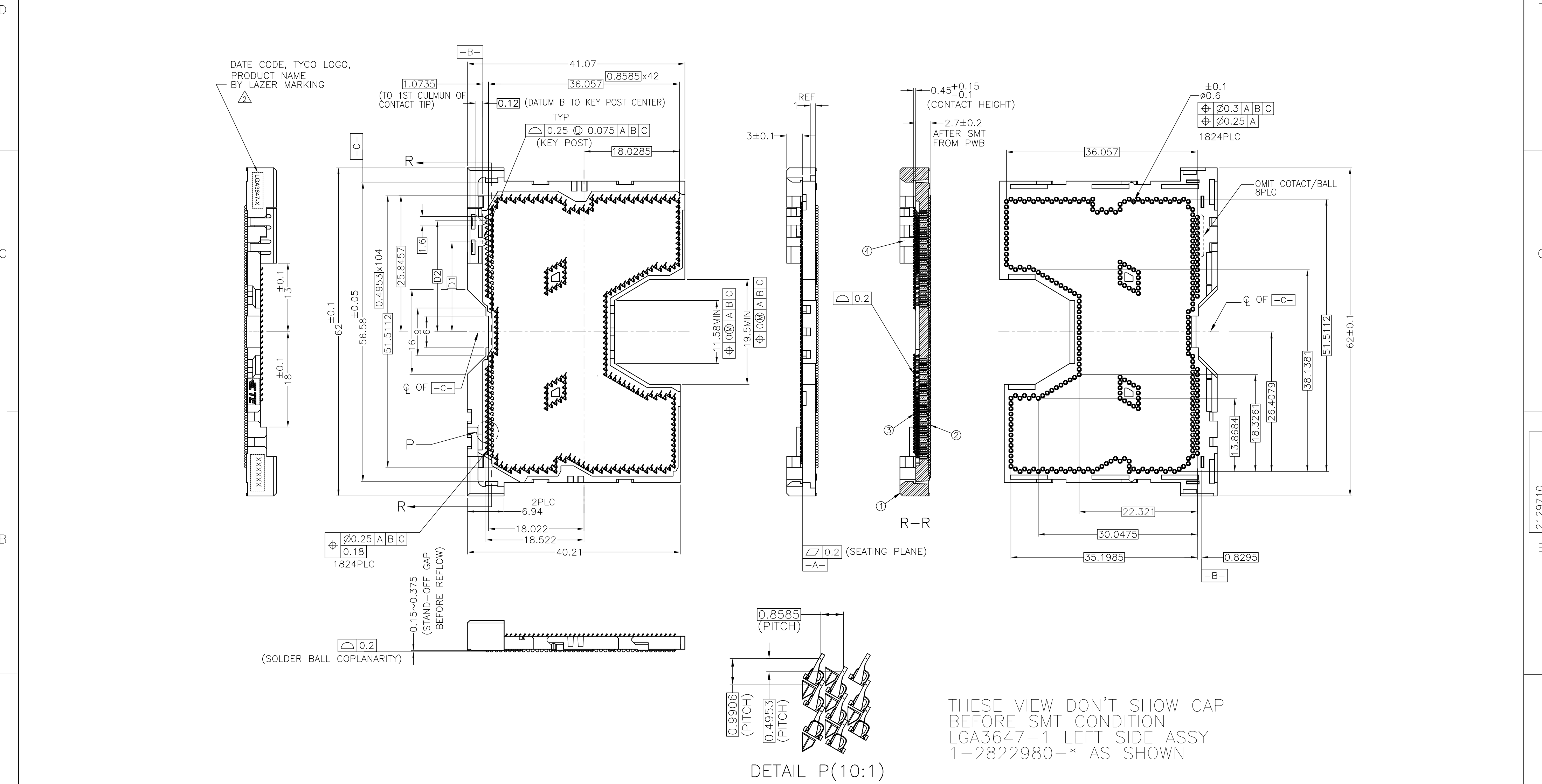
LOC	DIST	REVISIONS					
		P	LTR	DESCRIPTION		DATE	APVD
ES	—		C	ECR-17-006884		12MAY2017	B.L C.W



1. MATERIAL
- ① HOUSING : HIGH TEMP, THERMO-PLASTIC, UL94V-0, BLACK
 - ② CONTACT : COPPER ALLOY
FINISH : Au PL. SHOW AS AT CONTACT AREA
ON OVERALL OVER Ni UNDER PL. 0.00127 MIN.
 - ③ SOLDER BALL : Sn/Ag/Cu
 - ④ KEY HSG LEFT : HIGH TEMP. THERMO-PLASTIC, UL94V-0, BLACK
 - ⑤ KEY HSG RIGHT: HIGH TEMP. THERMO-PLASTIC, UL94V-0, P0 YELLOW, P1 NATURAL
 - ⑥ CAP : HIGH TEMP. THERMO-PLASTIC, UL94V-0, NATURAL
- INDICATED DATE CODE , TYCO LOGO, PRODUCT NAME ON THE HSG
 FOR NORMAL ORDER, LEFT AND RIGHT SEGMENT SHOULD ORDER AT SAME TIME

LGA3647-1 SOCKET P1				LGA3647-0 SOCKET P0				PRODUCT NAME	ASSY PART NUMBER
30u Au PLATING	15u Au PLATING	30u Au PLATING	15u Au PLATING	30u Au PLATING	15u Au PLATING	30u Au PLATING	15u Au PLATING		
LGA3647-1 RIGHT SEGMENT	LGA3647-1 LEFT SEGMENT	LGA3647-1 RIGHT SEGMENT	LGA3647-1 LEFT SEGMENT	LGA3647-0 RIGHT SEGMENT	LGA3647-0 LEFT SEGMENT	LGA3647-0 RIGHT SEGMENT	LGA3647-0 LEFT SEGMENT		
2822980-4	1-2822980-4	2822980-2	1-2822980-2	2822980-3	1-2822980-3	2822980-1	1-2822980-1		

14.5	21	17	1	1							2-2129710-8	
								1			2-2129710-7	
		16							1		2-2129710-6	
	21	17			1						2-2129710-5	
						1					2-2129710-4	
		16								1	2-2129710-3	
											2-2129710-2	
											2-2129710-1	
PRODUCT WEIGHT (g/SOCKET)	DIMENSION D2	DIMENSION D1						QTY.		PACKAGE PART NO.		
THIS DRAWING IS A CONTROLLED DOCUMENT.			DWN T.KUO	04MAR2015		<div>TE</div> TE Connectivity						
			CHK M.CHAO	04MAR2015								
			APVD M.CHAO	04MAR2015								
			PRODUCT SPEC		NAME SOCKET ASSY LGA3647-X							
			108-115115									
			APPLICATION SPEC									
			114-115011		SIZE		CAGE CODE		DRAWING NO		RESTRICTED TO	
			WEIGHT —		A2		00779		C-2129710		—	
			CUSTOMER DRAWING					SCALE		SHEET		REV
								NTS		1 of 7		C



THIS DRAWING IS A CONTROLLED DOCUMENT.

DIMENSIONS:
mm

MATERIAL
-

TOLERANCES UNLESS OTHERWISE SPECIFIED:

0-PLC	±	±0.3
1-PLC	±	±0.3
2-PLC	±	±0.3
3-PLC	±	±0.3
4-PLC	±	±0.3
ANGLES	±	±
FINISH	-	-

DWN
-

CHK
-

APVD
-

PRODUCT SPEC
-

APPLICATION SPEC
-

WEIGHT
-

CUSTOMER DRAWING

TE Connectivity

NAME
SOCKET ASSY
LGA3647-X

SIZE
A2

CAGE CODE
00779

DRAWING NO
C=2129710

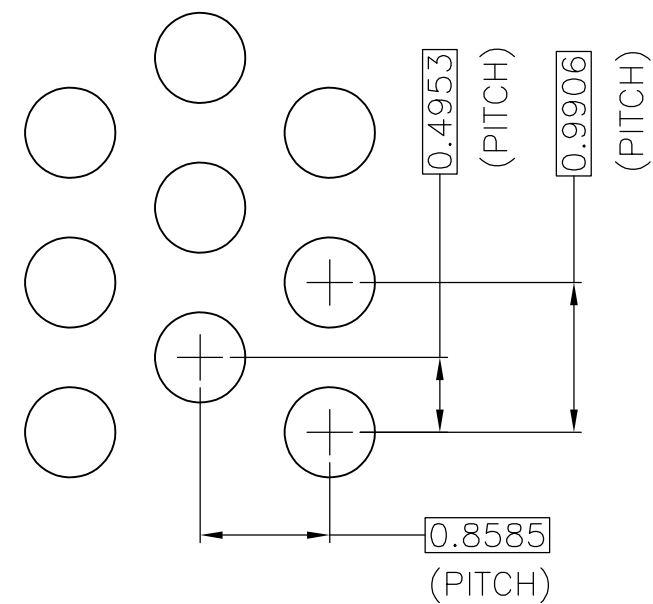
RESTRICTED TO
-

SCALE
NTS



SHEET
2 OF 7

REV
C

1471-9 (3/11)



DETAIL M(20:1)

THIS DRAWING IS A CONTROLLED DOCUMENT.			<div>DWN</div> <div>CHK</div> <div>APVD</div>		<div></div> <div>TE Connectivity</div>						
DIMENSIONS: mm		TOLERANCES, UNLESS OTHERWISE SPECIFIED:		NAME							
		0. PLC ± ± 1. PLC ± ± 2. PLC ± ±0.3 3. PLC ± ±3 4. PLC ± ± ANGLES ± ±		PRODUCT SPEC —							
MATERIAL		FINISH		APPLICATION SPEC —							
—		—		SIZE A2		CAGE CODE 00779		DRAWING NO C-2129710		RESTRICTED TO —	
CUSTOMER DRAWING						SCALE NTS		SHEET 5 of 7		REV C	

LOC	DIST	REVISIONS				
		P	LTR	DESCRIPTION	DATE	DWN
ES	-	-	-	SEE SHEET 1	-	-

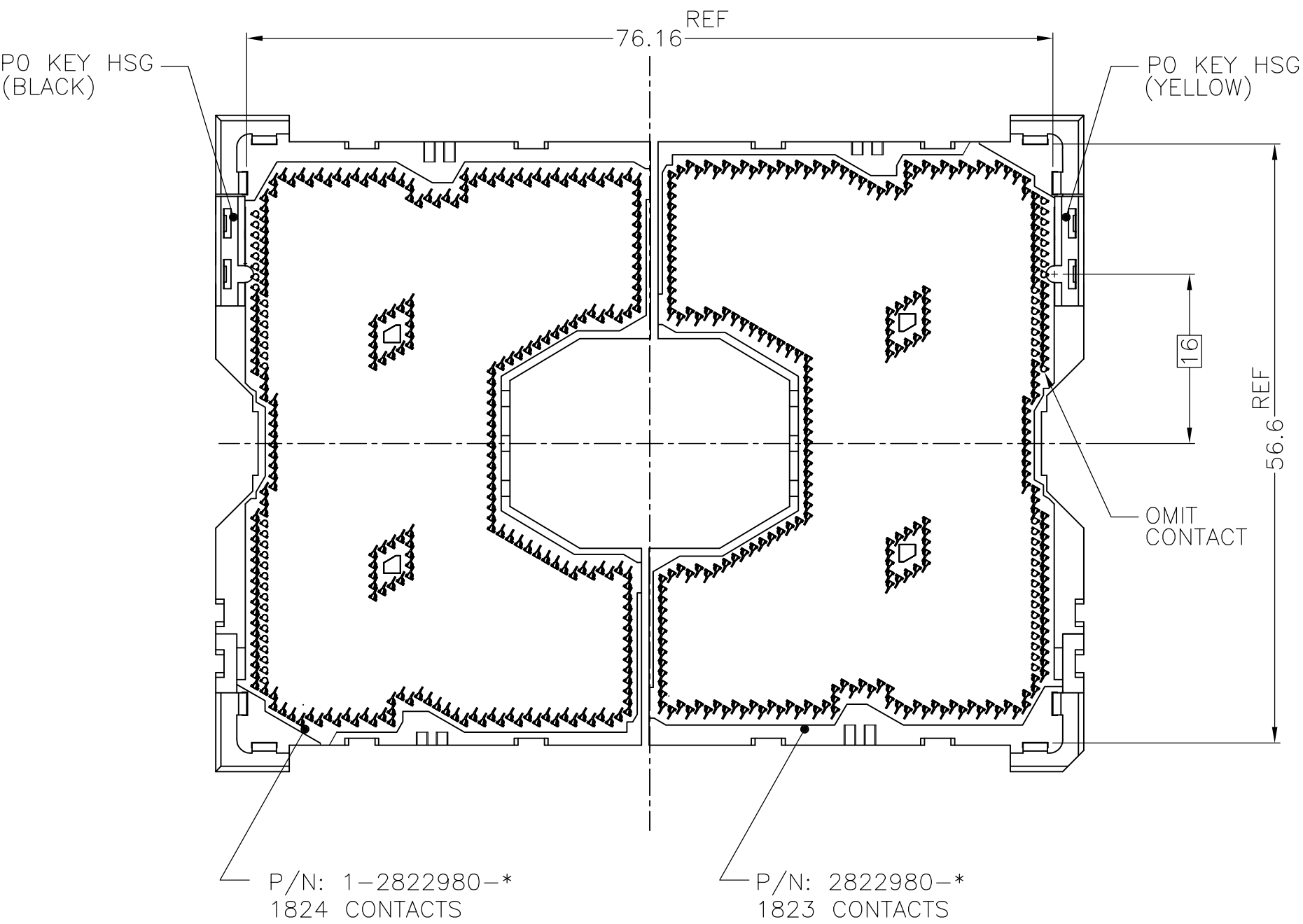
D

C

B

A

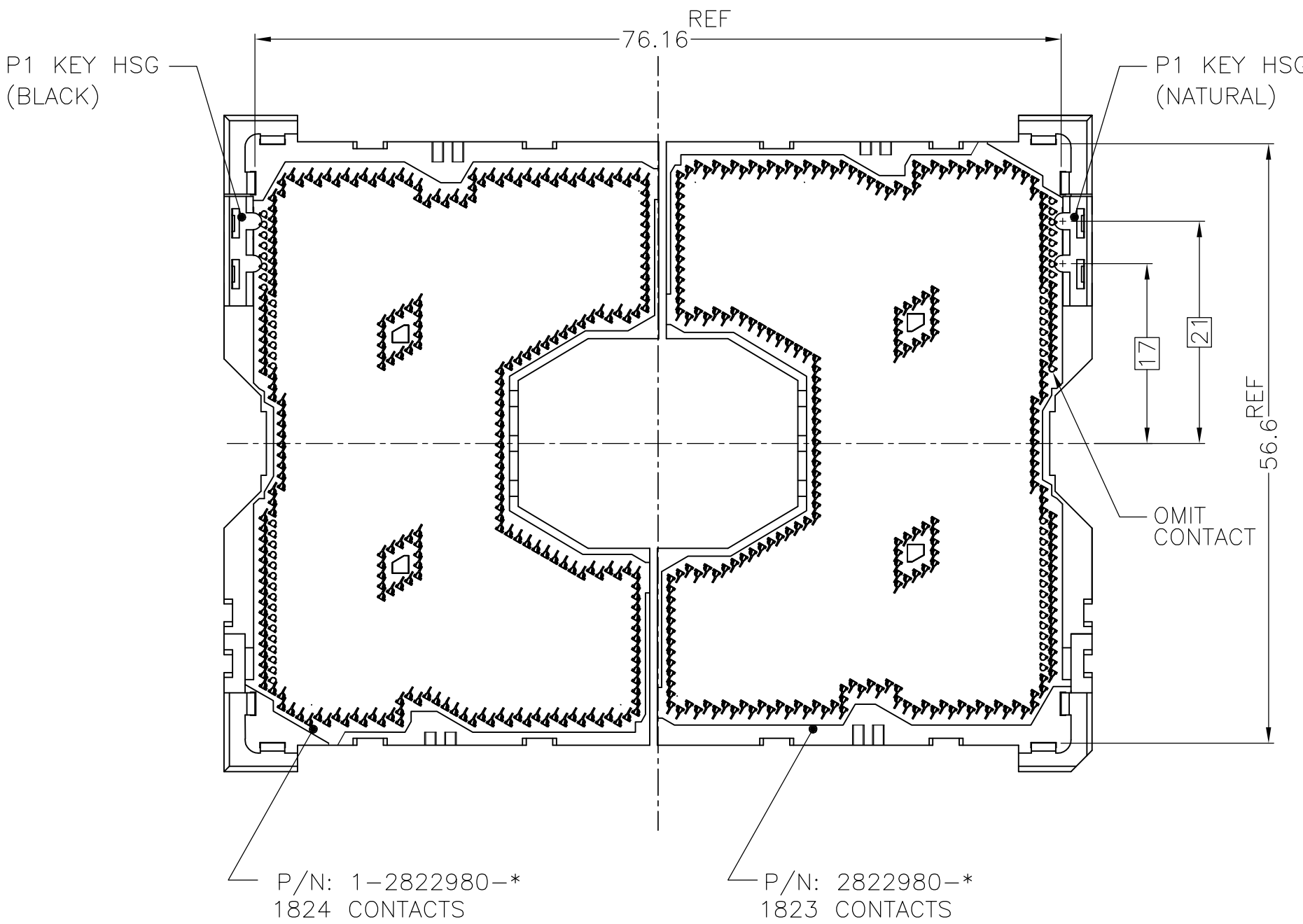
SOCKET P0,LGA3647-0 AS SHOWN



LGA3647-0 AS SHOWN
(KIT P/N: 2-2822979-*)

LGA3647-X POST SMT CONDITION
(PCB IS NOT SHOWN)

SOCKET P1,LGA3647-1 AS SHOWN



LGA3647-1 AS SHOWN
(KIT P/N: 2-2822979-*)

D

C

B

A

THIS DRAWING IS A CONTROLLED DOCUMENT.

DIMENSIONS:
mm

MATERIAL
-

TOLERANCES, UNLESS OTHERWISE SPECIFIED:

0. PLC	±	0.3
1. PLC	±	0.3
2. PLC	±	0.3
3. PLC	±	0.3
4. PLC	±	0.3
ANGLES	±	-
FINISH	-	-

DWN
-

CHK
-

APVD
-

PRODUCT SPEC
-

APPLICATION SPEC
-

WEIGHT
-

CUSTOMER DRAWING

TE Connectivity

NAME
SOCKET ASSY
LGA3647-X

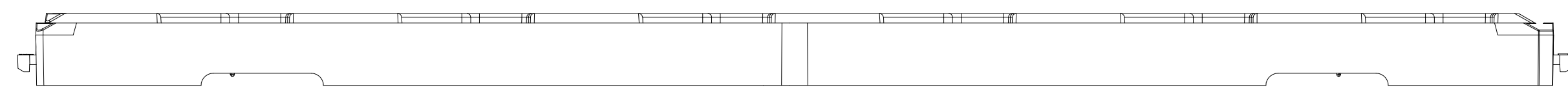
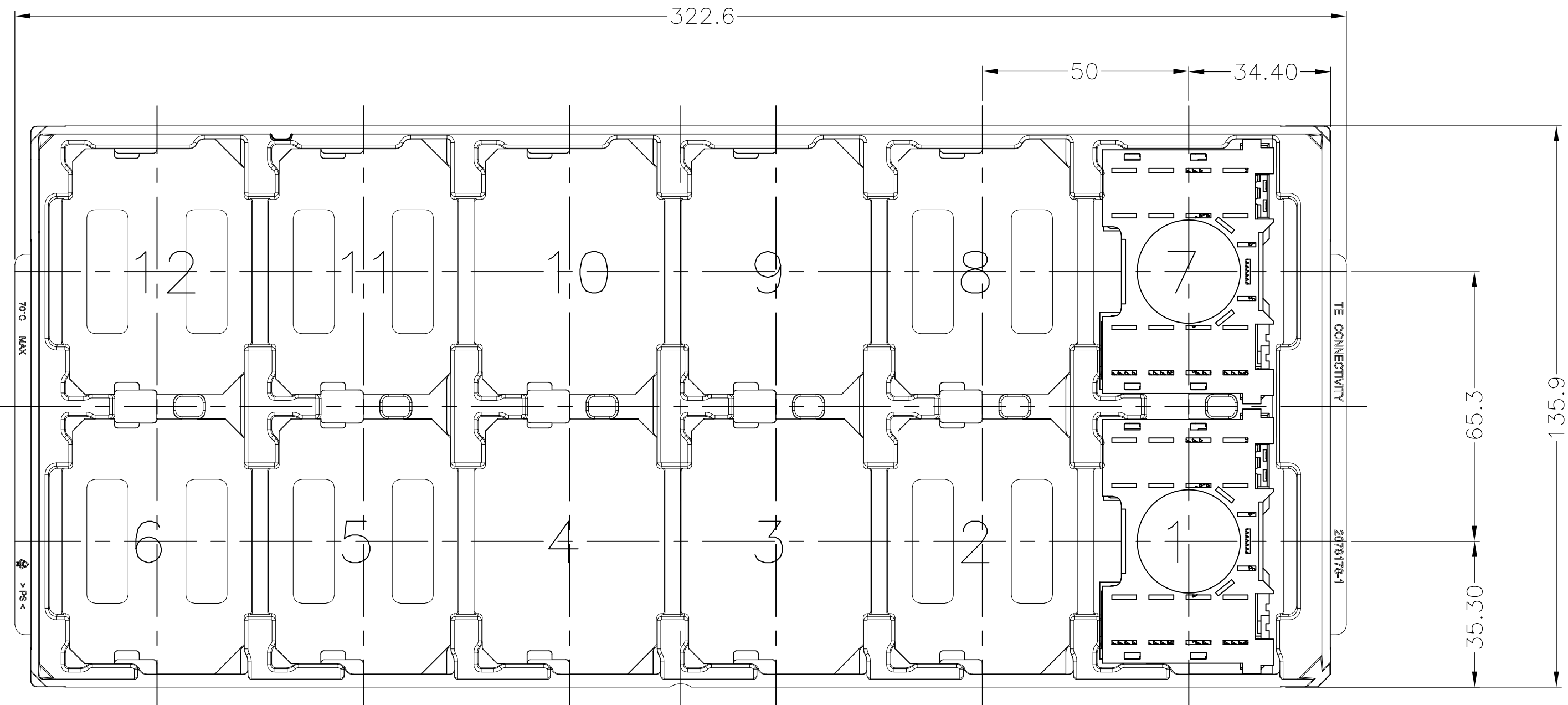
SIZE A2	CAGE CODE 00779	DRAWING NO C-2129710	RESTRICTED TO -
SCALE NTS			SHEET 6 of 7
REV C			

D

C

B

A



FOR LEFT SEGMENT,USE BLACK TRAY TO PACKAGE.
FOR RIGHT SEGMENT,USE BLUE TRAY TO PACKAGE.

168	84	12	2822980-4	2-2129710-8	LGA3647-1 RIGHT SEGMENT	LGA3647-1 SOCKET P1
168	84	12	1-2822980-4	2-2129710-7	LGA3647-1 LFFT SEGMENT	LGA3647-0 SOCKET P0
168	84	12	2822980-3	2-2129710-6	LGA3647-0 RIGHT SEGMENT	LGA3647-1 SOCKET P1
168	84	12	1-2822980-3	2-2129710-5	LGA3647-0 LFFT SEGMENT	LGA3647-0 SOCKET P0
168	84	12	2822980-2	2-2129710-4	LGA3647-1 RIGHT SEGMENT	LGA3647-1 SOCKET P1
168	84	12	1-2822980-2	2-2129710-3	LGA3647-1 LFFT SEGMENT	LGA3647-0 SOCKET P0
168	84	12	2822980-1	2-2129710-2	LGA3647-0 RIGHT SEGMENT	LGA3647-1 SOCKET P1
168	84	12	1-2822980-1	2-2129710-1	LGA3647-0 LFFT SEGMENT	LGA3647-0 SOCKET P0

SOCKET QTY PER OUTER BOX	SOCKET QTY PER INNER BOX	SOCKET QTY PER TRAY	ASSY PART NUMBER	ORDER PART NUMBER	PRODUCT NAME
84	12	12	2822980-4	2-2129710-8	LGA3647-1 RIGHT SEGMENT
84	12	12	1-2822980-4	2-2129710-7	LGA3647-1 LFFT SEGMENT
84	12	12	2822980-3	2-2129710-6	LGA3647-0 RIGHT SEGMENT
84	12	12	1-2822980-3	2-2129710-5	LGA3647-0 LFFT SEGMENT
84	12	12	2822980-2	2-2129710-4	LGA3647-1 RIGHT SEGMENT
84	12	12	1-2822980-2	2-2129710-3	LGA3647-1 LFFT SEGMENT
84	12	12	2822980-1	2-2129710-2	LGA3647-0 RIGHT SEGMENT
84	12	12	1-2822980-1	2-2129710-1	LGA3647-0 LFFT SEGMENT

THIS DRAWING IS A CONTROLLED DOCUMENT.

DIMENSIONS: mm

TOLERANCES UNLESS OTHERWISE SPECIFIED:
0-PLC ±
1-PLC ±
2-PLC ±
3-PLC ±
4-PLC ±
ANGLES ±
FINISH

DWN
—
CHK
—
APVD
—

PRODUCT SPEC
—
APPLICATION SPEC
—
WEIGHT
—

CUSTOMER DRAWING

TE Connectivity

NAME
SOCKET ASSY
LGA3647-X

SIZE
A2

CAGE CODE
00779

DRAWING NO
C-2129710

RESTRICTED TO
—

SCALE
NTS

SHEET
7 of 7

REV
C

Mouser Electronics

Authorized Distributor

Click to View Pricing, Inventory, Delivery & Lifecycle Information:

[TE Connectivity:](#)

[2-2129710-6](#)