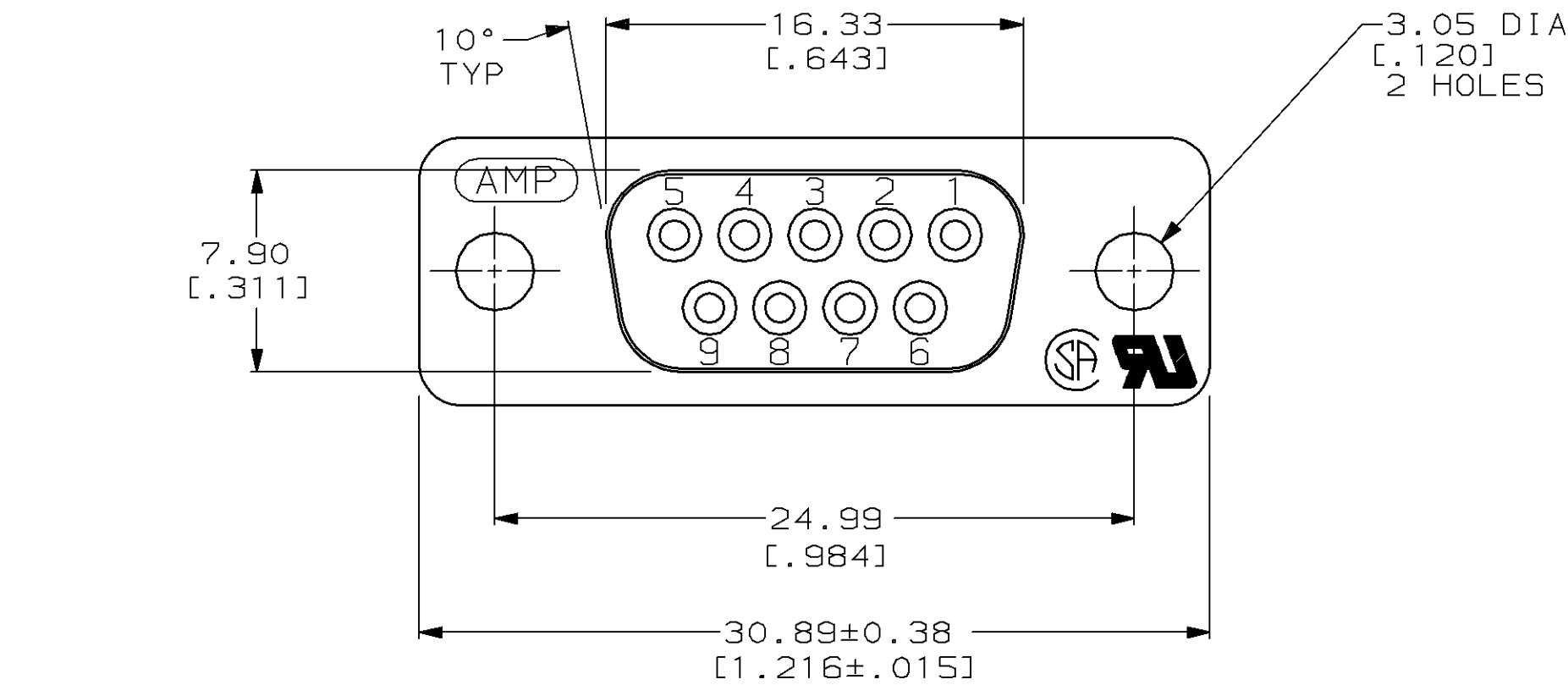
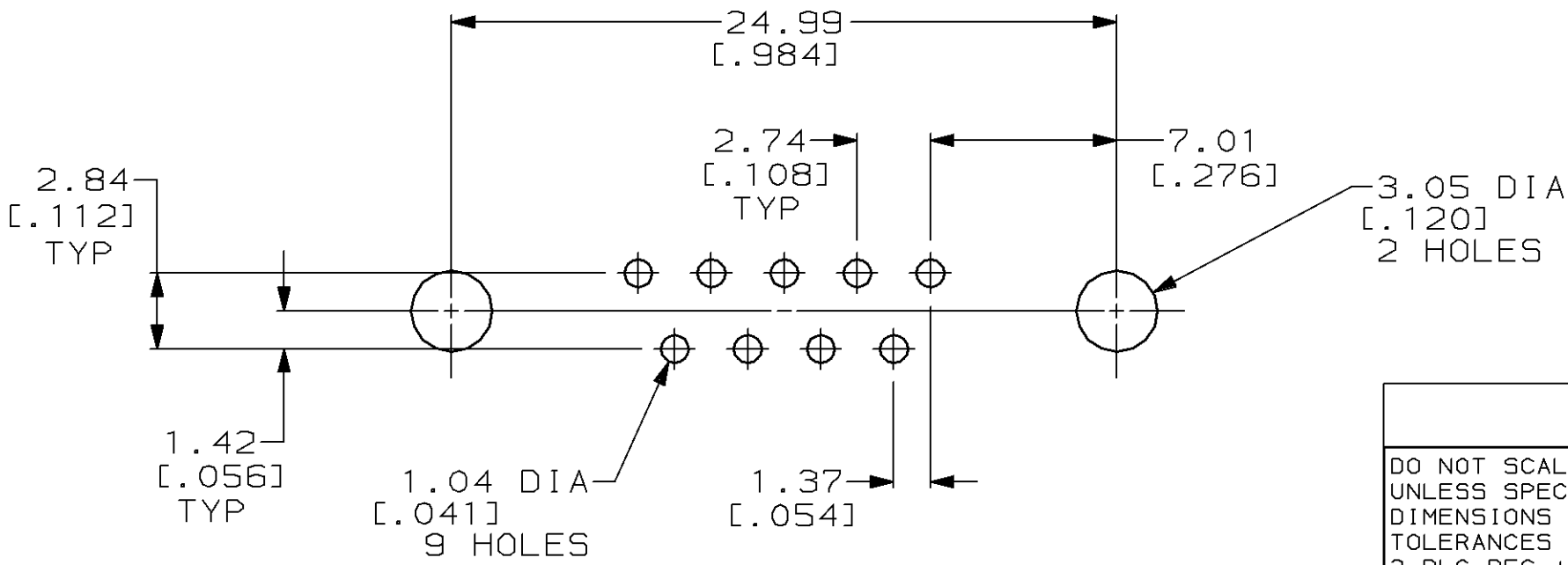
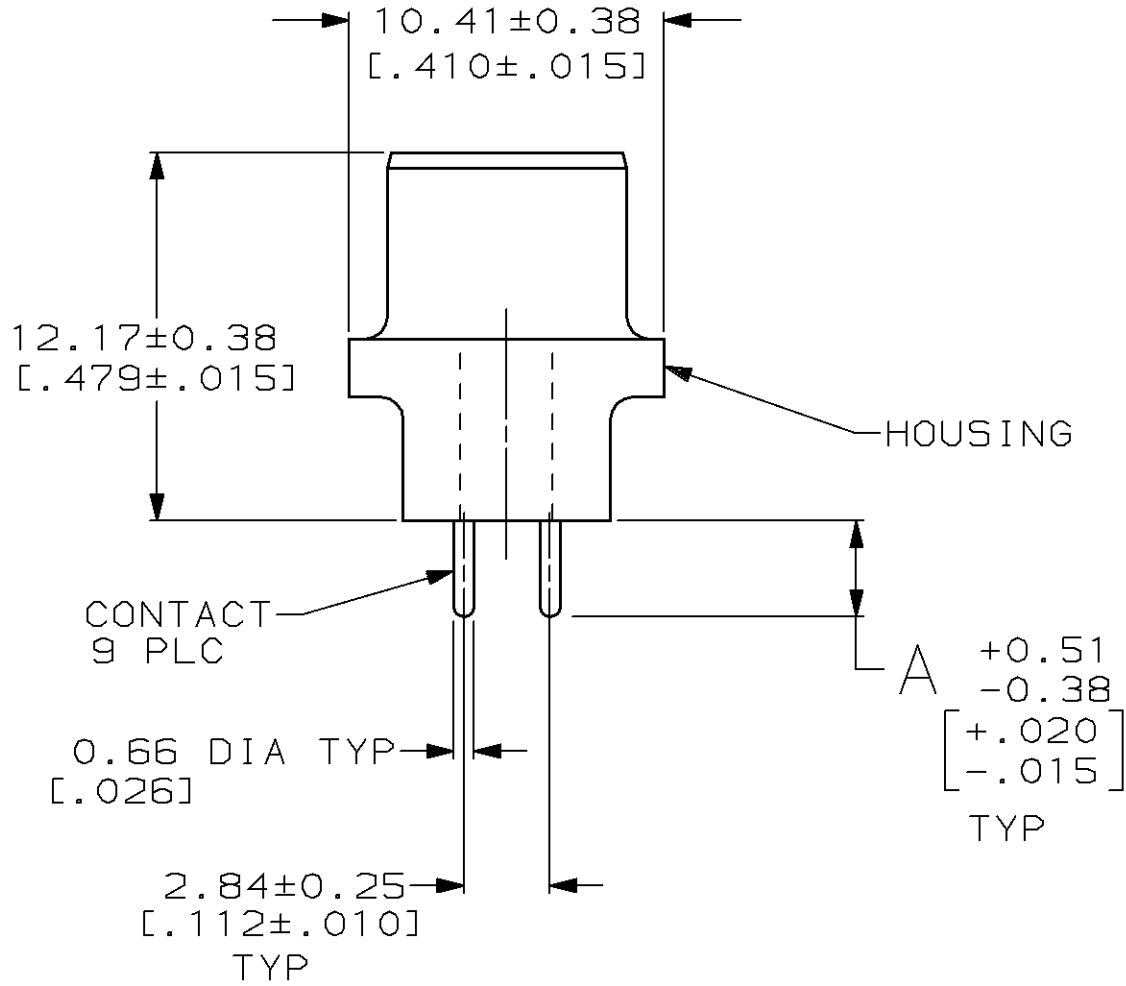
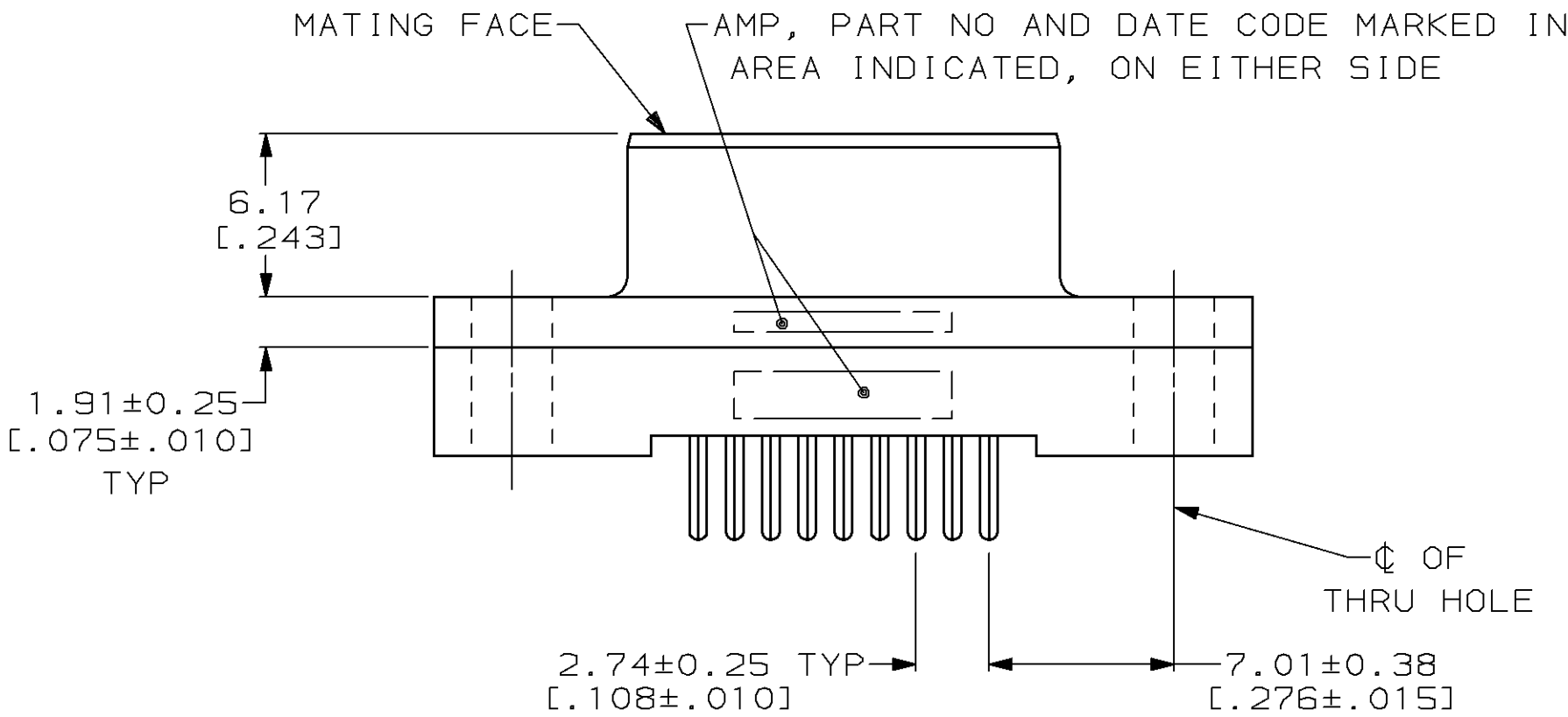


LOC	DIST	P	F	REVISIONS			
				ZONE	LTR	DESCRIPTION	DATE
BD	77				D	REDRAWN & REVISED, ECN BD3361	11-89
					E	OBS 207826-7, -8 BD6038	06/10/92
					F	OBS -5, -6 PER EC 0020-964-93	04/05/94



- 1 HOUSING: BLACK POLYESTER, UL 94V-0 RATED; CONTACTS: PHOSPHOR BRONZE PER QQ-B-750.
- 2 GOLD PLATING PER MIL-G-45204, TIN PLATING PER MIL-T-10727, NICKEL PLATING PER QQ-N-290.
- 3 GOLD FLASH FOR A LENGTH OF 2.54[.100] MIN FROM MATING END, 2.54μm[.000100] MIN TIN OR TIN-LEAD FOR A LENGTH OF DIMENSION A FROM OPPOSITE END, ALL OVER 1.27μm[.000050] MIN NICKEL.
- 4 0.76μm[.000030] MIN GOLD FOR A LENGTH OF 2.54[.100] MIN FROM MATING END, 2.54μm[.000100] MIN TIN OR TIN-LEAD FOR A LENGTH OF DIMENSION A FROM OPPOSITE END, ALL OVER 1.27μm[.000050] MIN NICKEL.



RECOMMENDED PC BOARD MOUNTING DIMENSIONS

OBSOLETE	6.35 [.250]	4	207826-8
OBSOLETE	6.35 [.250]	3	207826-7
OBSOLETE	4.32 [.170]	4	207826-6
OBSOLETE	4.32 [.170]	3	207826-5
	3.18 [.125]	4	207826-4
	3.18 [.125]	3	207826-3

DO NOT SCALE PRINT. UNLESS SPECIFIED DIMENSIONS IN mm [INCHES] TOLERANCES ON : 2 PLC DEC ± 0.13 [.005] 3 PLC DEC ± - ANGLES ± 2°		DR 11-16-89 J McCLINTON	AMP INCORPORATED Harrisburg, Pa. 17105	
MATERIAL 1		CHK 2-1-90 R.STONE		
FINISH 2		APPD 2-2-90 S.SCHIEFFERLY	NAME RECEPTACLE ASSEMBLY, SIZE 1, 9 POSN, VERTICAL, AMPLIMITE® HD-20	
CONTACT: SEE TABLE		APPD 2-2-90 C.ROHDE	SIZE C CAGE CODE 00779 DRAWING NO 207826	
		PRODUCT SPEC 108-40025	SCALE 4:1 SHEET 1 OF 1	
		APPLICATION SPEC -		
		WEIGHT -		

Mouser Electronics

Authorized Distributor

Click to View Pricing, Inventory, Delivery & Lifecycle Information:

[TE Connectivity:](#)

[207826-3](#)