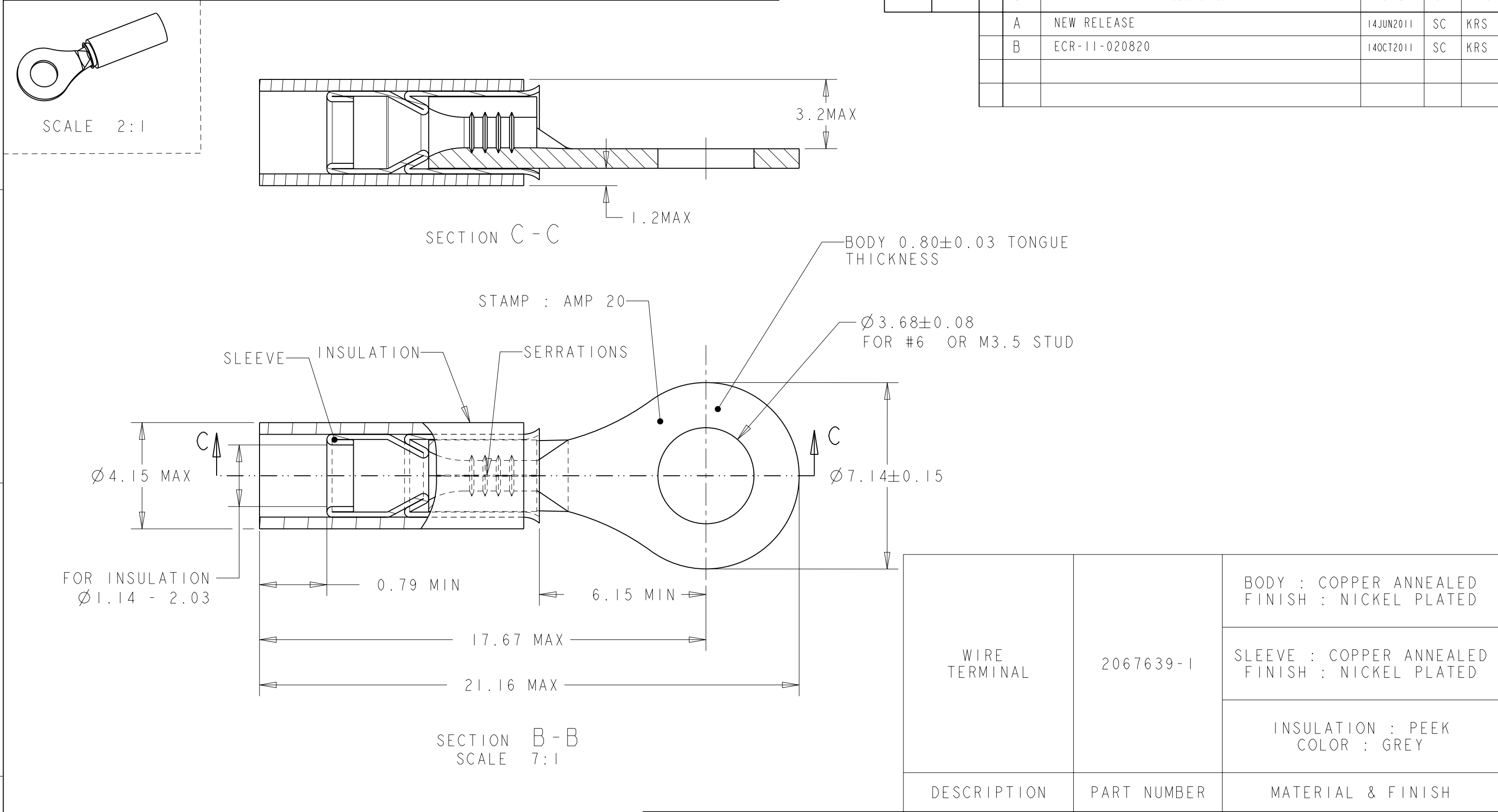



LOC	DIST	REVISIONS					
		P	LTR	DESCRIPTION	DATE	DWN	APVD
-	-		A	NEW RELEASE	14JUN2011	SC	KRS
			B	ECR-11-020820	14OCT2011	SC	KRS



WIRE TERMINAL	2067639-1	BODY : COPPER ANNEALED FINISH : NICKEL PLATED
		SLEEVE : COPPER ANNEALED FINISH : NICKEL PLATED
		INSULATION : PEEK COLOR : GREY
DESCRIPTION	PART NUMBER	MATERIAL & FINISH

THIS DRAWING IS A CONTROLLED DOCUMENT.		DWN 14JUN2011 SRIVANI C	 TE Connectivity		
DIMENSIONS: mm		CHK 15JUN2011 SHIVA PRAKASH KR			
TOLERANCES UNLESS OTHERWISE SPECIFIED:		APVD 15JUN2011 SHIVAPRAKASH KR	NAME TERMINAL, PEEK PIDG STRATO, 20 AWG		
0 PLC ± 1 PLC ±0.3 2 PLC ± 3 PLC ± 4 PLC ± ANGLES ±5°		PRODUCT SPEC 108-15356	SIZE A3		
MATERIAL SEE TABLE		APPLICATION SPEC 114-15102	CAGE CODE 00779		
FINISH SEE TABLE		WEIGHT 0.67 gr	DRAWING NO C-2067639		
		CUSTOMER DRAWING	RESTRICTED TO -		
			SCALE 3:1		
			SHEET 1 OF 1		
			REV B		

Mouser Electronics

Authorized Distributor

Click to View Pricing, Inventory, Delivery & Lifecycle Information:

[TE Connectivity:](#)

[2067639-1](#)