

NOTES

1. ALL DIMENSIONS ARE IN $\frac{\text{INCHES}}{\text{[MILLIMETERS]}}$
2. DIMENSIONS APPEARING IN TABLE ARE AS FOLLOWS:
 - a - AS SUPPLIED
 - b - AFTER UNRESTRICTED RECOVERY

3. COATING (ADHESIVE): IS OPTIONAL AS SUPPLIED DIMENSIONS APPEARING IN TABLE ARE FOR UNCOATED PARTS. WHEN COATING IS ADDED, ENTRY DIAMETER WILL BE REDUCED BY .06 [1.5] MAX.

4. ORDERING INFORMATION

BASE PART NUMBER 205A1XX -XX -XX /XXX /0

MATERIAL DASH NUMBER

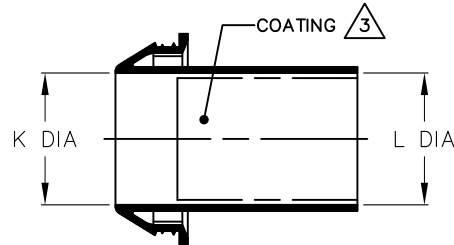
- 3 POLYOLEFIN, SEMI RIGID (RT-301)
- 4 POLYOLEFIN, FLEXIBLE (RT-1304)
- 25 ELASTOMER, FLUID RESISTANT (RW-2070)
- 100 POLYOLEFIN, SEMI-FLEXIBLE ZEROHAL (RW-2082)

MODIFICATION NUMBER

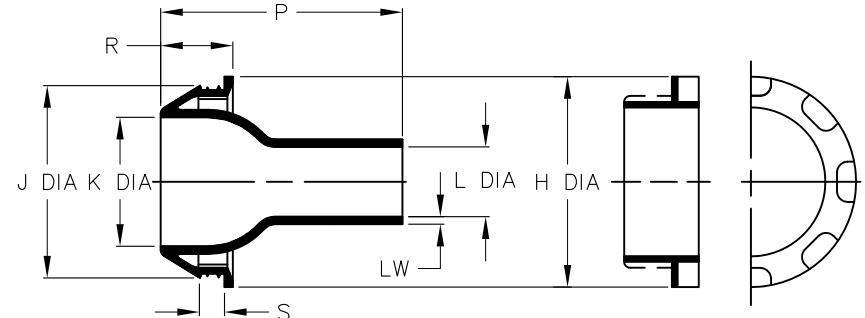
ADHESIVE SLASH NUMBER

SEE COMPATIBILITY CHART BELOW

COLOR DESIGNATOR



AS SUPPLIED



AFTER UNRESTRICTED RECOVERY

TABLE OF DIMENSIONS												HOLE DIAMETER			
PART DESCRIPTION	H	J	K		L		P	R	S	LW	CABLE O.D. RANGE		.063±.02	.125±.02	.250±.02
	MAX	MAX	MIN	±8%	MIN	MAX	±10%	±10%	±10%	±20%	MIN	MAX	[1.6±0.5]	[3.2±0.5]	[6.4±0.5]
	b	b	a	b	a	b	b	b	b	b			PANEL THICKNESS	PANEL THICKNESS	PANEL THICKNESS
205A112	<u>1.16</u> [29,5]	<u>1.01</u> [25,7]	<u>.44</u> [11,2]	<u>.50</u> [12,7]	<u>.44</u> [11,2]	<u>.17</u> [4,3]	<u>1.75</u> [44,5]	<u>.65</u> [16,5]	<u>.26</u> [6,6]	<u>.06</u> [1,5]	<u>.17</u> [4,3]	<u>.40</u> [10,2]	<u>.98</u> [24,9]	<u>.99</u> [25,2]	<u>1.00</u> [25,4]
205A123	<u>1.50</u> [38,1]	<u>1.34</u> [34,0]	<u>.71</u> [18,0]	<u>.78</u> [19,8]	<u>.71</u> [18,0]	<u>.38</u> [9,7]	<u>2.20</u> [55,9]	<u>.65</u> [16,5]	<u>.26</u> [6,6]	<u>.07</u> [1,8]	<u>.38</u> [9,7]	<u>.70</u> [17,8]	<u>1.27</u> [32,3]	<u>1.28</u> [32,5]	<u>1.31</u> [33,3]
205A134	<u>2.00</u> [50,8]	<u>1.83</u> [46,5]	<u>1.09</u> [27,7]	<u>1.20</u> [30,5]	<u>1.09</u> [27,7]	<u>.65</u> [16,5]	<u>2.25</u> [57,2]	<u>.70</u> [17,8]	<u>.26</u> [6,6]	<u>.10</u> [2,5]	<u>.65</u> [16,5]	<u>1.05</u> [26,7]	<u>1.74</u> [44,2]	<u>1.75</u> [44,5]	<u>1.78</u> [45,2]
205A145	<u>2.30</u> [58,4]	<u>2.15</u> [54,6]	<u>1.39</u> [35,3]	<u>1.50</u> [38,1]	<u>1.39</u> [35,3]	<u>.99</u> [25,2]	<u>3.00</u> [76,2]	<u>.69</u> [17,5]	<u>.26</u> [6,6]	<u>.09</u> [2,3]	<u>1.00</u> [25,4]	<u>1.35</u> [34,3]	<u>2.04</u> [51,8]	<u>2.06</u> [52,3]	<u>2.09</u> [53,1]
205A155	<u>3.06</u> [77,7]	<u>2.97</u> [75,4]	<u>1.82</u> [46,2]	<u>1.98</u> [50,3]	<u>1.82</u> [46,2]	<u>1.28</u> [32,5]	<u>3.60</u> [91,4]	<u>.78</u> [19,8]	<u>.27</u> [6,9]	<u>.10</u> [2,5]	<u>1.28</u> [32,5]	<u>1.80</u> [45,7]	<u>2.95</u> [74,9]	<u>2.97</u> [75,4]	<u>3.00</u> [76,2]
205A165	<u>3.92</u> [99,6]	<u>3.82</u> [97,0]	<u>2.51</u> [63,8]	<u>2.76</u> [70,1]	<u>2.51</u> [63,8]	<u>1.77</u> [45,0]	<u>4.50</u> [114,3]	<u>.83</u> [21,1]	<u>.27</u> [6,9]	<u>.12</u> [3,1]	<u>1.77</u> [45,0]	<u>2.50</u> [63,5]	<u>3.78</u> [96,0]	<u>3.80</u> [96,5]	<u>3.83</u> [97,3]

If this document is printed it becomes uncontrolled. Check for the latest revision

COMPATIBILITY CHART

MATERIAL DASH NO.	ADHESIVE (COATING) SLASH NUMBER	ADHESIVE (COATING) S NUMBER
-3	/42; /86;	S-1017; S-1048;
-4	/42; /86;	S-1017; S-1048;
-25	/42; /86; /225	S-1017; S-1048; S-1206
-100	/86;	S-1048;

UNLESS OTHERWISE SPECIFIED
DIMENSIONS ARE INCHES. METRIC
DIMENSIONS ARE IN BRACKETS.

DECIMAL TOLERANCES

.XXX ± 0.005 [0.13 mm]
.XX ± 0.01 [0.25 mm]
.X ± 0.1 [0.50 mm]

ANGLE TOLERANCE

.X ± 1 DEG.

TYCO ELECTRONICS CORPORATION RESERVES
THE RIGHT TO AMEND THIS DRAWING AT ANY
TIME. USERS SHOULD EVALUATE THE
SUITABILITY OF THE PRODUCT FOR THEIR
APPLICATION.

REVISED

UNGUYEN

APPROVED

DHURRELL

THIRD ANGLE

PROJECTION

Raychem Molded Parts
CUSTOMER DRAWING



TE Connectivity

TITLE

FEEDTHROUGH, SEAL

SIZE

B

CODE IDENT. NO.

06090

DWG. NO.

205A112thru165

© 2001- 2011 Tyco Electronics Corporation. All rights reserved.

SCALE: NTS

DO NOT SCALE THIS DRAWING

SHEET 1 OF 1

Mouser Electronics

Authorized Distributor

Click to View Pricing, Inventory, Delivery & Lifecycle Information:

[TE Connectivity:](#)

[811345-000](#) [853094-000](#) [853272-000](#) [CR0984-000](#)